

Connected Culture and Natural Heritage in the Northern Environment

Virtual Tours



Northern Periphery and
Arctic Programme

2014-2020



EUROPEAN UNION

Investing in your future
European Regional Development Fund

Narrative

Scene Selection and Capture

Software Process

Archive and Metadata

Curating and Exhibitions

Workflow

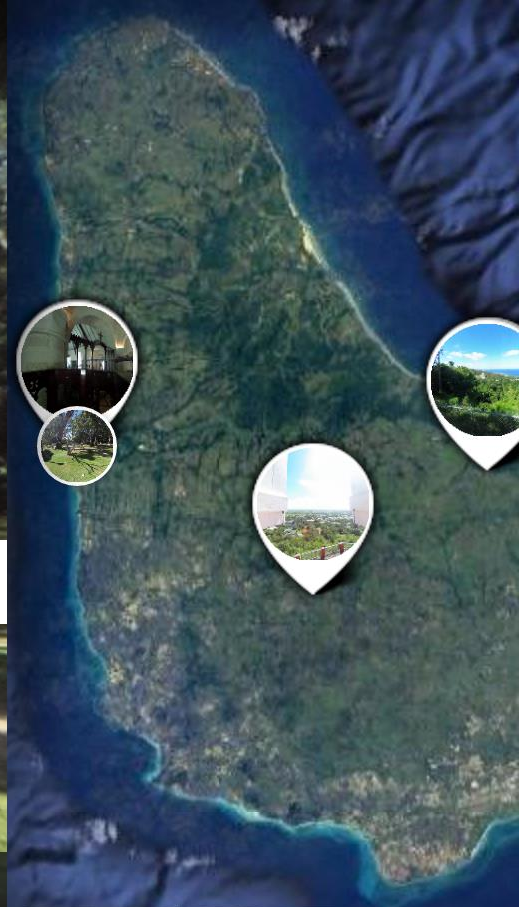
- Subject and narrative
- Choose platform
- Choose locations
- Select hotspots
 - Image, audio, video
- Shoot photographs
- Create Equirectangular projection
- Assemble tour



Barbados Islan...
St. James Parish C...



Space by eulac3D

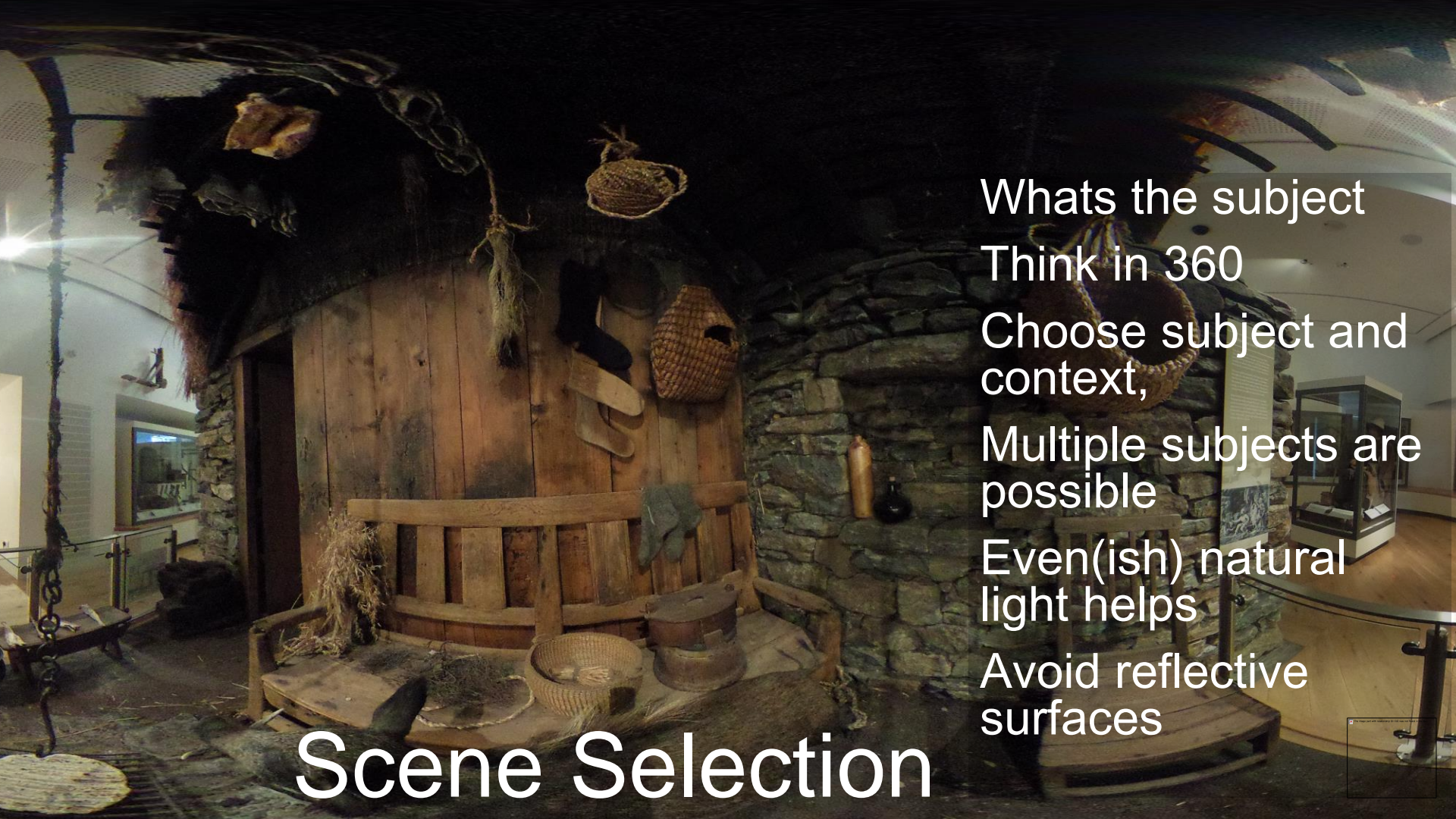


Map
Google

Earth

Imagery ©2017 TerraMetrics

Terms of Use



Whats the subject

Think in 360

Choose subject and context,

Multiple subjects are possible

Even(ish) natural light helps

Avoid reflective surfaces

Scene Selection

Narrative

Scene Selection and Capture

Software Process

Archive and Metadata

Curating and Exhibitions

Mode of Capture

360 Camera

Mobile or Tablet

SLR

Camara 360: Theta S

- Download the mobile app
- Automatic and manual controls
- Configure ISO to 100
- Resolution around 6000*3000
- Optional HDR





TOOLS OF THE TRADE

Choose the camera and accessories that best suit your needs — or apply to borrow a Street View camera.



RICOH THETA S & SC

- Exceptional quality
- A new 360 photo every 8 seconds
- 1.25 hours of continuous use
- Theta S: \$350
- Theta SC: \$300

[See example image](#)

[Learn more and order: Theta S, Theta SC](#)



SAMSUNG GEAR 360

- Swappable batteries and memory
- A new 360 photo every 8 seconds
- 2 hours of use per battery
- \$350

[See example image](#)

[Learn more](#)



GOOGLE TREKKER

- The same camera Google uses
- Captures constantly
- Lasts all day
- Available for loan

[See example image](#)

[Borrow a Trekker](#)



Welcome

Explore the world in 360° with imagery from Google and other contributors

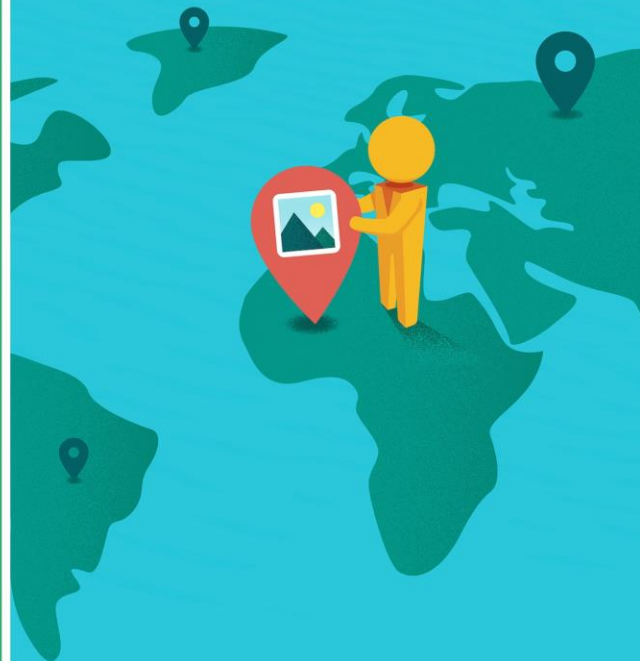
SKIP



Capture in 360°

Capture in one tap with linked, spherical cameras, or just use your phone

SKIP



Publish to Google Maps

Add photo spheres to Google Maps to help people discover new places



DONE

Mobile phone

Use Google Street View App

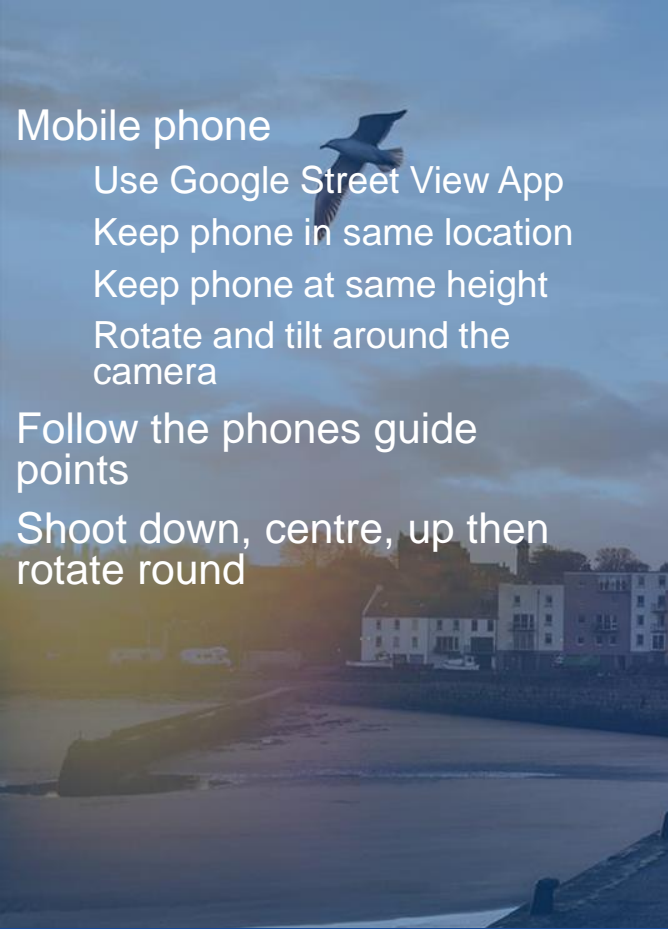
Keep phone in same location

Keep phone at same height

Rotate and tilt around the camera

Follow the phones guide points

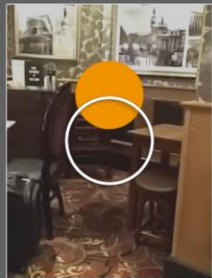
Shoot down, centre, up then rotate round



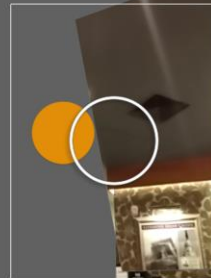
Set up and shoot photospheres



Mobile and Tablet



Point the camera at the dot



Panoramic Tripod Head

- Configure camera using manual settings
 - Apertura angosta, número ISO bajo
- Use a tripod and panoramic head
- Make sure the set up is level
- Configure so the camera rotates horizontally where the light converges in the lens
- Configure so the camera rotates vertically around the point where the light ocnverges
- Check that there is no parralax
- Ensure each photo overlaps
- Use HDR if there is wide variation in light



Narrative

Scene Selection and Capture

Software Process

Archive and Metadata

Curating and Exhibitions

Overlapping photographs



High Dynamic Range





Hugin - Panorama photo stitcher

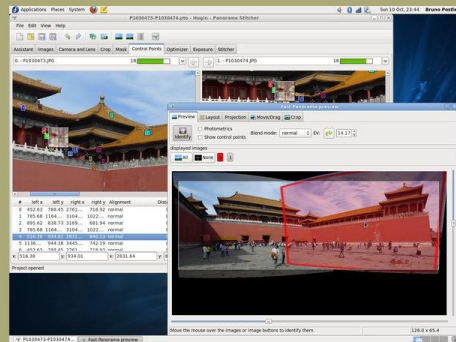


Hugin 2018.0.0 released! 2018-02-03

[Release notes...](#)

Goal: an easy to use cross-platform panoramic imaging toolchain based on [Panorama Tools](#).

With Hugin you can assemble a mosaic of photographs into a complete immersive panorama, stitch any series of overlapping pictures and much more.



Status

Hugin has now reached a *stable* state: the software is recommended for general use.

Download locations for stable binaries releases are listed by platform [here](#).

Hugin is in constant development. From time to time somebody is kind enough to publish binaries of development versions.

Hugin has been [localised](#) with Brazilian Portuguese, Bulgarian, Catalan, Chinese Simplified, Chinese Traditional, Czech, Dutch, Danish, English, French, German, Hungarian, Italian, Japanese, Korean, Polish, Russian, Slovakian, Slovenian, Spanish, Swedish and Ukranian translations.

News

Hugin-2018.0.0 released 2018-02-03

Hugin is more than just a panorama stitcher

Hugin-2017.0.0 released 2017-07-31

Hugin is more than just a panorama stitcher

Hugin-2016.2.0 released 2016-09-18

Hugin Overview

- Collect your images
 - Check Camera properties
 - Tie your control points
 - Run the optimiser
 - Equirectangular projection
 - Run the stitcher
- <http://hugin.sourceforge.net/tutorials/index.shtml>



Narrative

Scene Selection and Capture

Software Process

Archive and Metadata

Curating and Exhibitions

Creating an Archive

- **Use the best quality possible**
- **Include the original photographs**
 - This enables re-use and guards against obsalesence.
- **Create meta data:**
 - Location, format, date
- **Upload to Social Archive Site**
 - For example roundme.com



ze:

size

size

size

cm



Language:

Language

Location:

Map

Satellite



Current:

Latitude

Longitude

Origin:

Latitude

Longitude

Find:

Latitude

Longitude

- Dashboard
- Items**
- Collections
- Item Types
- Tags
- Exhibits
- Simple Pages
- Dropbox
- BagIt
- Bulk Editor
- Comments
- CSV Import
- Embedded Items
- Fedora Connector
- Map
- OAI-PMH Harvester

Add an Item

Press **F11** to exit full screen



Dublin Core

Item Type Metadata

Scripto

Files

Zoom

Tags

Fedora

Map

ImageMap

Dublin Core

The Dublin Core metadata element set is common to all Omeka records, including items, files, and collections. For more information see, <http://dublincore.org/documents/dces/>.

Title

A name given to the resource

Add Input

Use HTML

Subject

The topic of the resource

Add Input

Use HTML

Description

An account of the resource

Add Input

Add Item

Public: Featured:

Collection

Select Below

Virtual Tours Made Simple

World's most hassle-free 360° VR publishing and panoramic tours authoring platform.

[CREATE TOUR](#)



Drag & Drop

your panoramas anywhere, or [browse](#)

Roundme supports only full spherical panoramas in equirectangular projection, 8 bit JPEG or TIFF.

Maximum panorama size: 10,000 x 5,000 px.

Maximum [stereoscopic](#) panorama size: 10,000 x 10,000 px.

Narrative

Scene Selection and Capture

Software Process

Archive and Metadata

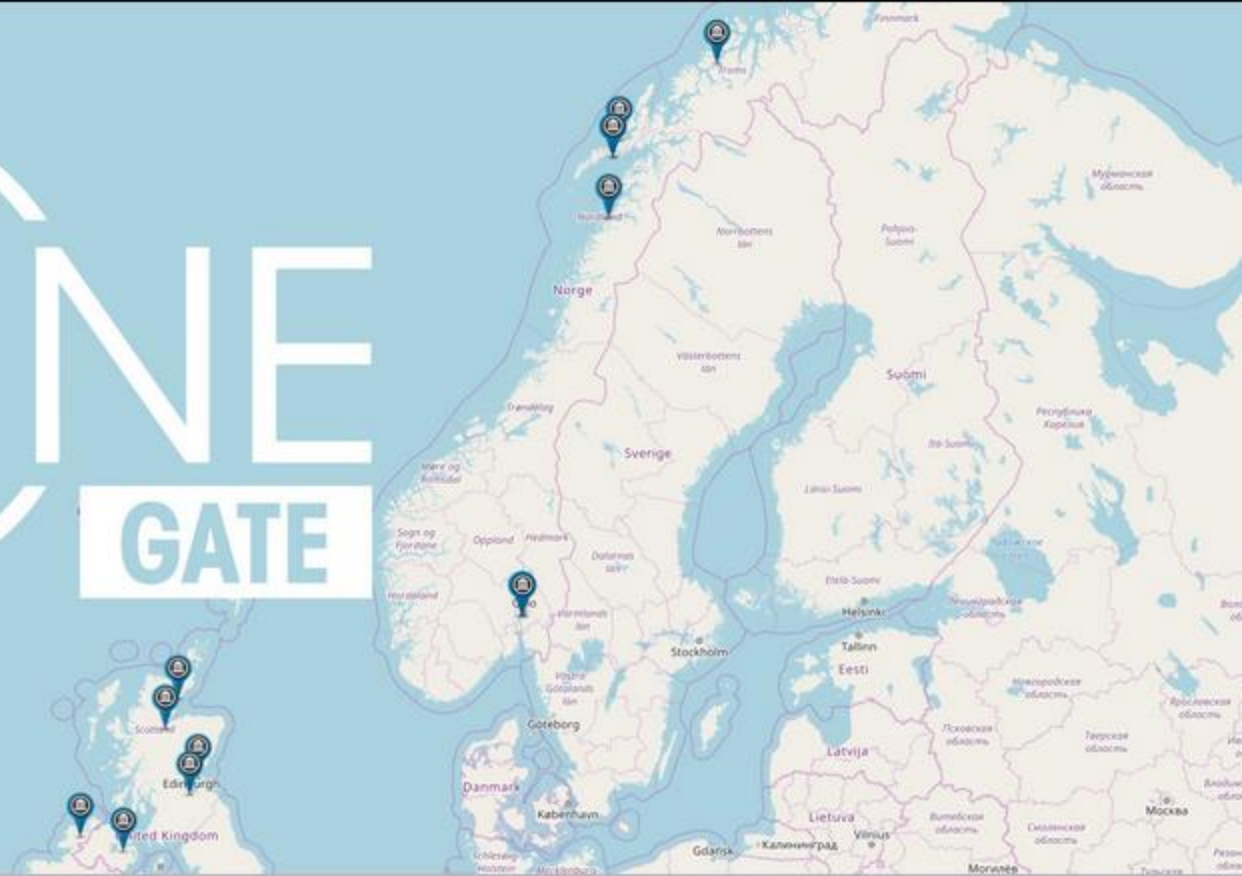
Curating and Exhibitions

Platforms

- Interactive Map
- Social Archive
- Virtual Reality Installation
- Virtual Reality App



LINE GATE



Galleries: featured case studies





**TIMESPAN
MUSEUM AND ART
GALLERY**

[VIEW MORE](#)



**THE ULTIMATE
PHOTOSPHERE
CHALLENGE**



**SKREI
EXPERIENCE
CENTRE**



**VIRTUAL
SKRIDUKLAUSTUR
- ICELAND**



**SKRIDUKLAUSTUR
- ICELAND**



**HELMSDALE FISH
CURING YARD**

Caen



Site of Caen Highland Township, vacated as part of the 19th Century highland clearances



Helmsdale Fish Curing Yard - Hillview

Shore St, Helmsdale KW8 6JA, UK



1





Helmsdale Fish Curing Yard - Hillview

Shore St, Helmsdale KW8 6JA, UK



1



← Back

Share



Embed

Embed Size: 640x360 ▾









```
<iframe width='640'  
height='360'  
src='https://roundme.com/e  
mbed/69092/169348'  
frameborder='0'  
webkitallowfullscreen  
mozallowfullscreen  
allowfullscreen></iframe>
```



Helmsdale Fish Curing Yard - Hillview

Shore St, Helmsdale KW8 6JA, UK



-  WebVR mode
-  Fullscreen
-  Share & Embed
-  Projections
-  QTVR Navigation
-  Autorotation Off
-  Autofollow On
-  Slideshow
-  Help
-  Feedback



MAPS

- Earth
- Labels on
- 3D on
- Traffic
- Transit
- Bicycling
- Terrain

- Notifications
- Your places
- Your contributions
- Your timeline
- Share or embed map
- Print

- Take a tour
- Language
- Tips and tricks
- Get help
- Add a missing place
- Send feedback

- Search settings
- History



Navigation controls including a compass, a 3D view toggle, zoom in (+) and zoom out (-) buttons, a street view pegman icon, and a scale bar.

Digital outputs in
virtual reality

Packaged
outputs in mobile
application



Virtual Reality

