

Working with spherical media



Northern Periphery and
Arctic Programme
2014-2020



EUROPEAN UNION

Investing in your future
European Regional Development Fund

Introduction and overview

- **Motivation and history**
- What is a photosphere
- Workflow and overview
- How to shoot a photosphere
- How to make a tour
- How to share a tour
- What about video?
- Sources and resources

The screenshot shows the Roundme website interface. At the top, there's a navigation bar with links for EXPLORE, STOCK, WORLD MAP, COMMUNITY, PRICING, and BLOG, along with a 'CREATE TOUR' button. The main header features the 'Open Virtual Worlds' profile, including a globe logo, location (Scotland, UK), follower count (14396), and a 'PRO' badge. Below this is a grid of virtual tour cards, each with a thumbnail, title, location, description, and engagement metrics (likes, views, shares).

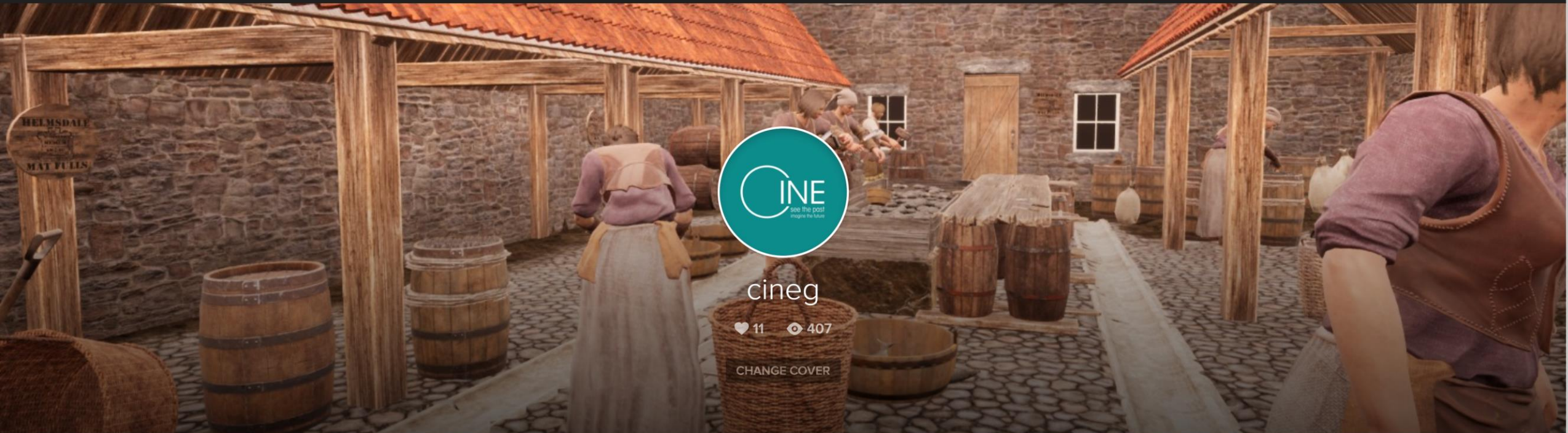
Virtual Tour Title	Location	Engagement (Views, Likes, Shares)
Virtual St Kilda 1890	Na h-Eileanan an Iar, UK	26 Views, 0 Likes, 488 Shares
The Wardlaw Museum - Prenovation	7 The Scores, St Andrews KY16 9AR, UK	10 Views, 0 Likes, 6 Shares
Perth 1440 - Interpretation Project	South Street, Perth PH2, UK	15 Views, 0 Likes, 127 Shares
St Andrews Preservation Trust	23 North St, St Andrews KY16 9PW, UK	11 Views, 0 Likes, 61 Shares
MacAskill Monument Berneray	No Location	4 Views, 0 Likes, 36 Shares
Tomintoul History	New Technology Centre, North Haugh, St A...	8 Views, 0 Likes, 6 Shares
Paisley Abbey	Paisley, UK	3 Views, 0 Likes, 10 Shares
SPACE	No Location	3 Views, 0 Likes, 115 Shares
Glenshee Archaeology Project Reconstruction	Lair, Blairgowrie PH10 7LP, UK	0 Views, 0 Likes, 0 Shares
Speyside Trooop	The Square, Tomintoul, Ballindalloch AB37 ...	0 Views, 0 Likes, 0 Shares
Lords of the Isles - 15th Century Finlaggan	Argyll and Bute, UK	0 Views, 0 Likes, 0 Shares
Perth Museum and Art Gallery	Perth, UK	0 Views, 0 Likes, 0 Shares



Long View of London from Bankside, a [panorama of London](#) by [Wenceslaus Hollar](#), 1647, notable for being rendered all from one viewpoint.



History



cineg

11 407

CHANGE COVER

PUBLISHED 0 DRAFTS 0 GALLERIES 1 STOCK 0 FOLLOWERS 2 FOLLOWS 0 ABOUT



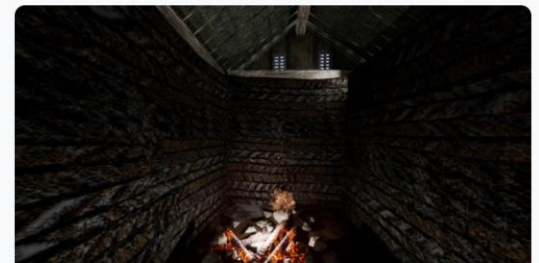
Helmsdale Curing Yard
Helmsdale, UK



Longhouse Farming Settlement
Highland Council, UK



Iron Age Roundhouse
Highland Council, UK



Skriðuklaustur Medieval Augustinian Settlement
Eastern Region, Iceland





North Uist 360

20x 360° panoramas from 6x archaeological sites around the island of North Uist, produced by a collaboration between Taigh Chearsabhagh Museum & Art Gallery and the University of St Andrews.

Learn more about the project [here](#).

Barpa nam Feannag

Ahmor is home to the Barpa Nam Feannag chambered cairn. Situated in the north of the island on a rocky hillock 400 yards from Gaireann Mill Loch, it appears as an irregular mound of loose stones 160 ft in length, 45 ft in width at its east end, tapering to 15 ft at the west.



Barpa Langais

Langass is home to the Barpa Langass burial cairn, which sits atop Beinn Langais with its entrance facing south east, and the Pobull Fhinn stone circle, situated on a plateau on the southern slope of the hill.

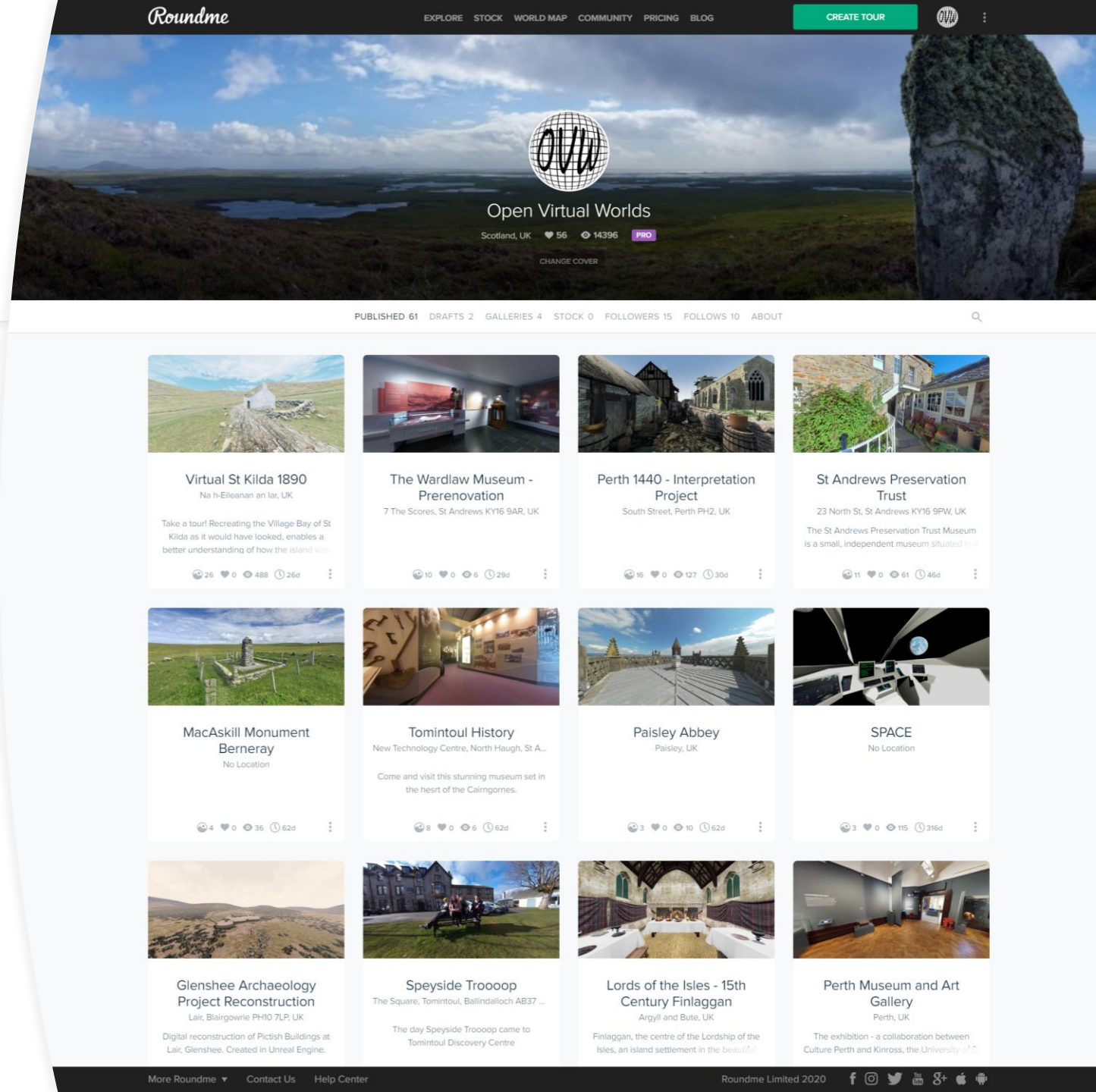
Udal

In the Udal, the archaeologist Iain Crawford and his team excavated a site that was visible in the landscape and identified in historical documents and oral tradition. The site lies among four large sand dunes, some 40ft high.



Introduction and overview

- Motivation and history
- **What is a photosphere**
- Workflow and overview
- How to shoot a photosphere
- How to make a tour
- How to share a tour
- What about video?
- Sources and resources



What makes a photosphere

- Spherical media
- Partial view
- Aspect ratio
- Equirectangular projection

Shoot all the way round

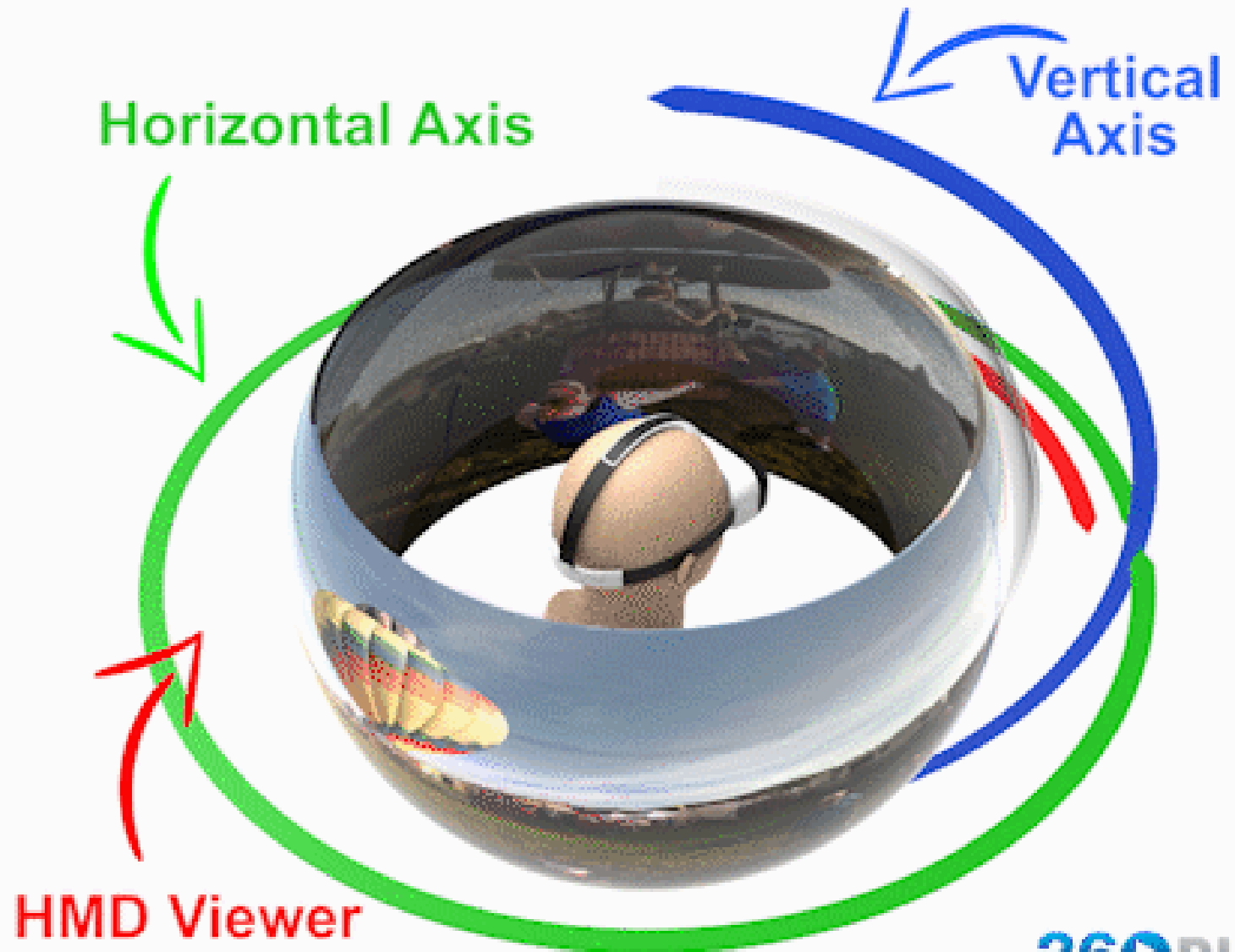
A white VR headset is shown on a white turntable. The turntable is rotating, and the headset is positioned to capture a full 360-degree view. The background is a plain, light-colored surface.

- Spherical media - 3 dimensions
- Immersive experience
 - Static - images
 - Moving - video

Why 360 Video Output Resolution Matters

Horizontal Axis	Vertical Axis	HMD Viewer
2,000	1,000	500
4,000	2,000	1,000
6,000	3,000	1,500
8,000	4,000	2,000
10,000	5,000	2,500
12,000	6,000	3,000
14,000	7,000	3,500
16,000	8,000	4,000

360Rize 360 Video Gear starts at 2,000 pixels and goes as high as 16,000 x 8,000 pixels which can provide true 4K HMD viewing



360RIZE
Life Without Edges® © 360Rize.com

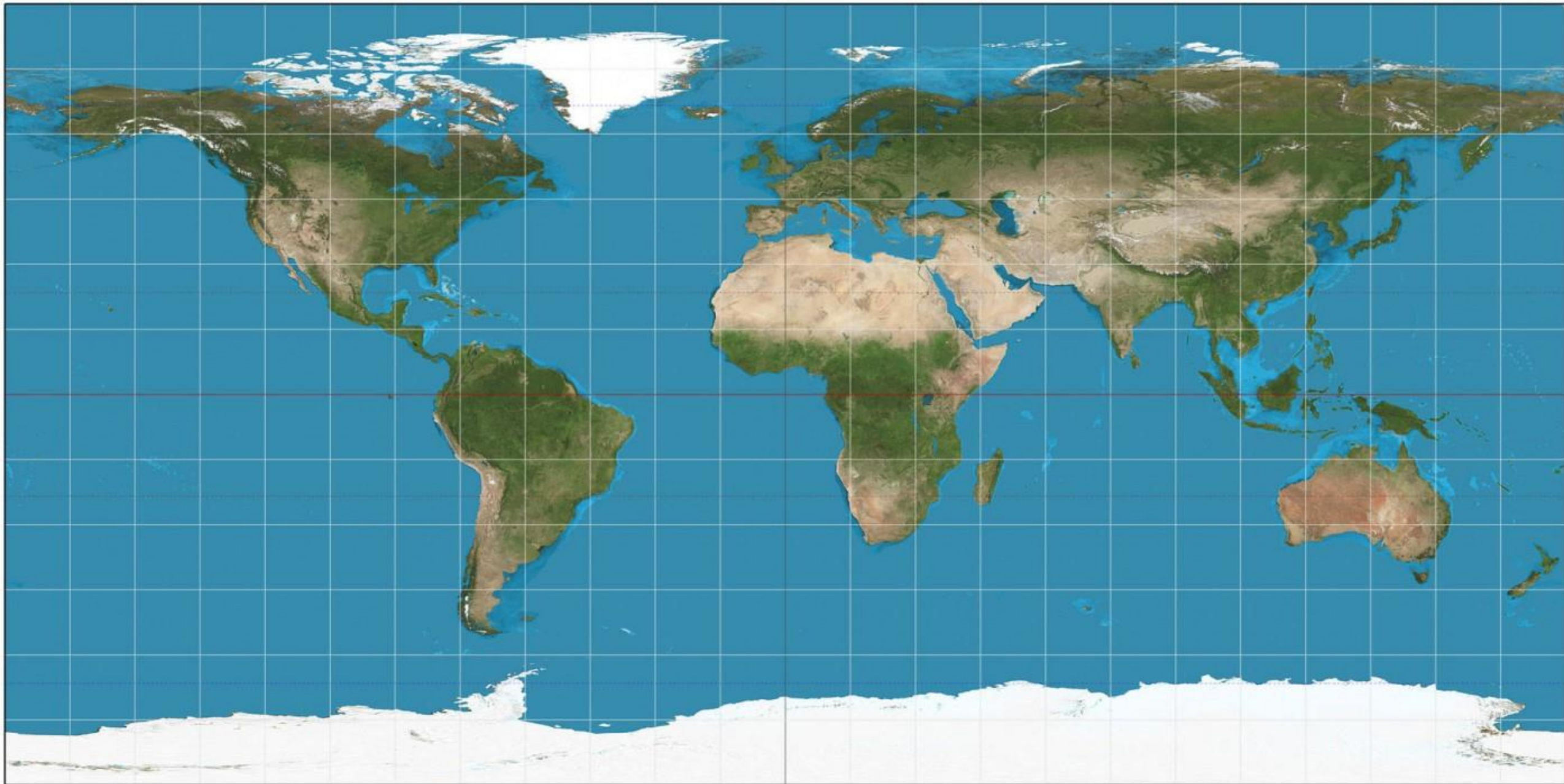
— Aspect ratio

An “old-school” screen is typically a 4:3 ratio.

An HD screen is a 16:9 ratio.

Modern movie theaters display in a 21:9 ratio.

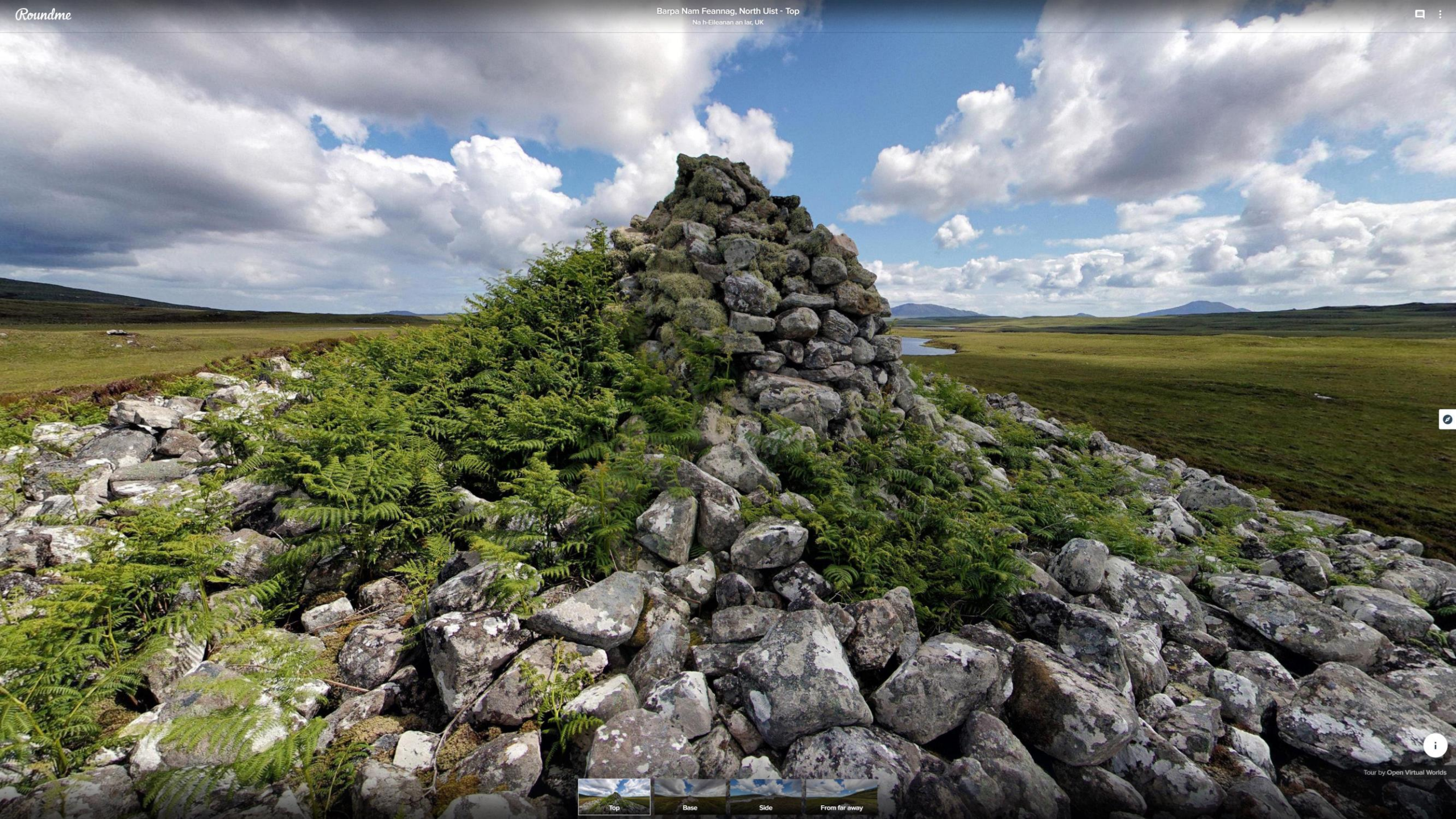
~~360 video, is “Equirectangular ratio of 2:1”~~



What is a photosphere?

- Imagine yourself in the middle of an inside out globe
- Projection: equirectangular, https://en.wikipedia.org/wiki/Equirectangular_projection
- Resolution
- Metadata





Spherical video

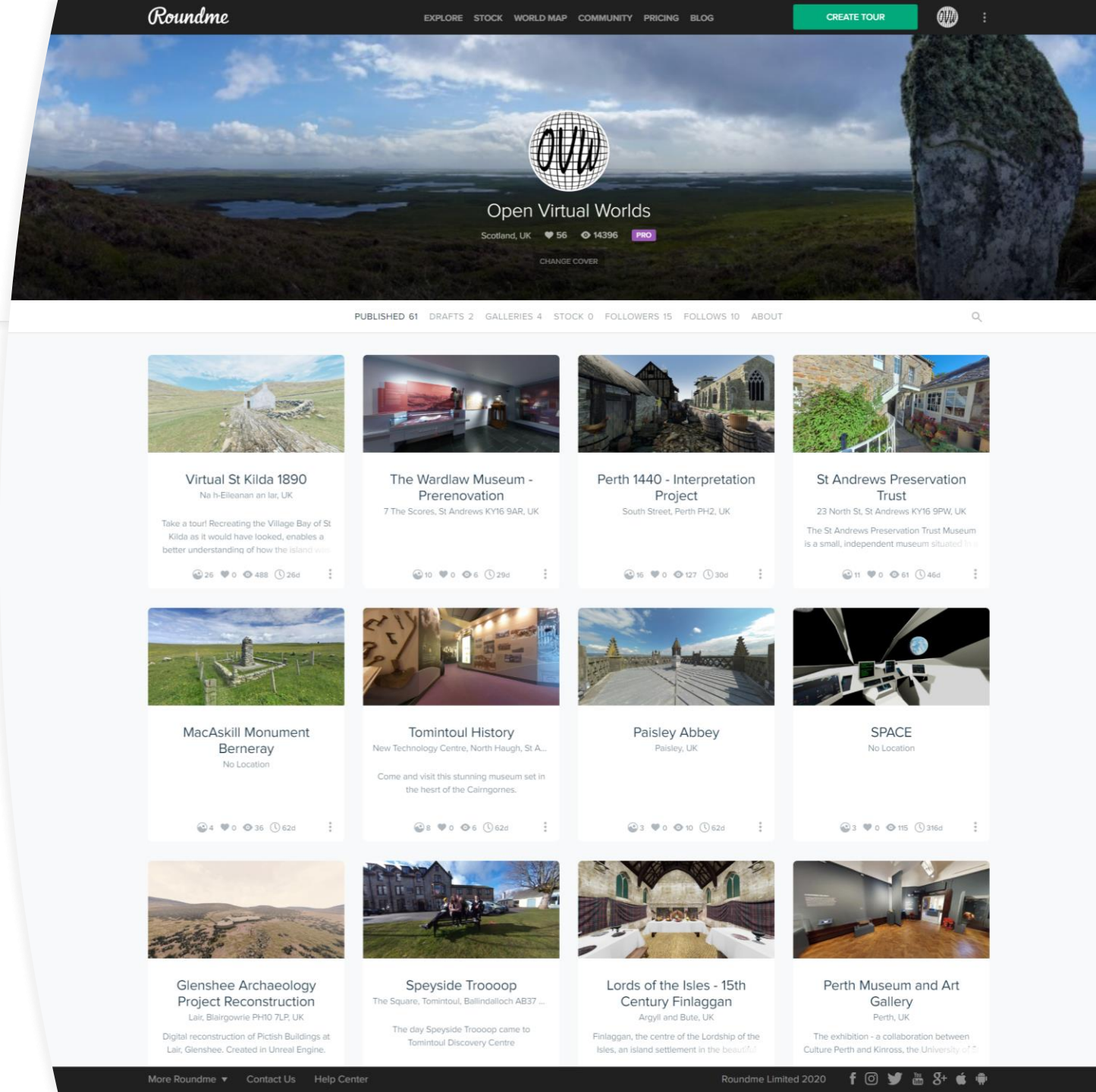


3D spherical media



Introduction and overview

- Motivation and history
- What is a photosphere
- **Workflow and overview**
- How to shoot a photosphere
- How to make a tour
- How to share a tour
- What about video?
- Sources and resources





What are the goals?

- Who is the virtual tour aimed at?
- What do you want to communicate?
- How long should the tour take to complete?
- Is there a call to action?



Workflow

- Subject and narrative
- Choose platform
- Choose locations
- Select hotspots
 - Image, audio, video
- Shoot photographs
- Create Equirectangular projections
- Assemble tour



How to make a tour

- Scene selections
- Plan hotspots and interactives
- What equipment and software
- Shoot and process photographs
- Assemble Tour



Scene selection

- Main choice is where to put the camera
 - Think in three dimensions
 - What is the subject?
 - What is the context?
- Lighting: even natural light is best
- Avoid reflective surfaces where possible



Whats the subject
Think in 360
Choose subject and
context,
Multiple subjects
are possible
Even(ish) natural
light helps
Avoid reflective
surfaces

Scene Selection



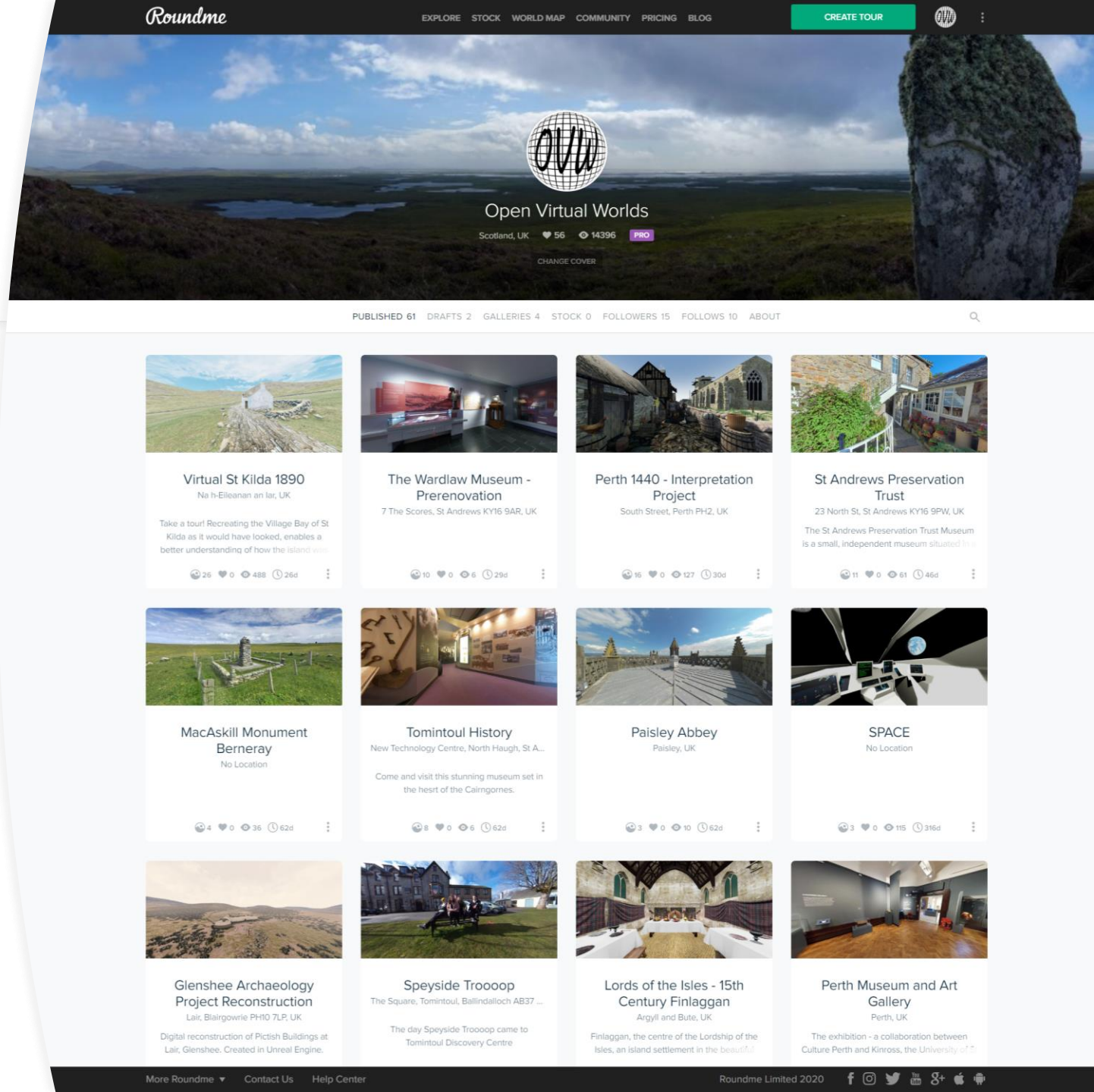


Narrative, hotspots, and interactions

- Depending on the platform
- Title and name for the photosphere
 - Description and meta data associated
- Audio commentary
- Visual hot spots
- Audio hotspots

Introduction and overview

- Motivation and history
- What is a photosphere
- Workflow and overview
- **How to shoot a photosphere**
- How to make a tour
- How to share a tour
- What about video?
- Sources and resources



Equipment and software

- Mobile phone, piece of string or stick
- 360 camera, tripod or monopod
- Camera, clicker, tripod, panoramic head
- Google street view
- Hugin
- Roundme
- CUPIDO

Shooting a photosphere

- With a mobile phone
- With a 360 camera and monopod
- With a camera and panoramic head

Cameras



Cameras: familiar with Ricoh Theta, Insta 360 x

- **Download the mobile app**
- **Automatic and manual controls**
- **Configure ISO to 100**
- **Resolution around 6000*3000**
- **Optional HDR**
- **About £400**



- My apps
- Shop
- Games
- Family
- Editors' Choice

- Account
- Payment methods
- My subscriptions
- Redeem
- Buy gift card
- My wishlist
- My Play activity
- Parent guide



Google Street View

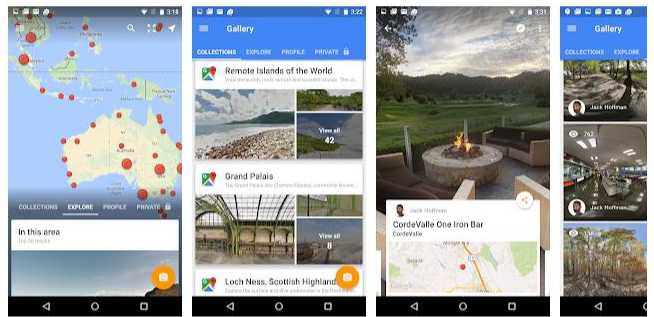
Google LLC Travel & Local

★★★★★ 2,252,997

PEGI 3

Add to wishlist

Install



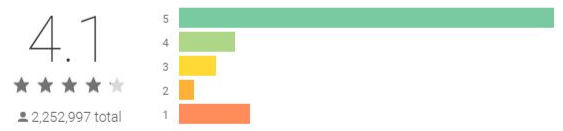
Try the new 'Video Mode' where you can connect a Ricoh Theta V or Theta Z1 camera and create Street View as you walk, cycle or drive. This new mode records video from your camera and converts it into connected Street View images when you publish to Google Maps. Now you can add new streets and trails where Street View cars have never driven before!

Explore world landmarks, discover natural wonders and step inside locations such as museums, arenas, restaurants and small businesses with Google Street View.

READ MORE

REVIEWS

Review Policy



Stef van Vuuren ★★★★★ 16 August 2020

16

You would think with all the brains at Google they can create a working app for using with a 360 camera! The app keeps stopping, sometimes you can't take photos, other times you can't upload photos, most of the times it can't connect to the camera! Please fix your app! On the Apple tablet it doesn't

Full Review



Mbiata Inyang ★★★★★ 22 July 2020

100

Similar

See more



Live Earth Map 2020

8th Generation Apps - Global
Let's explore the world using your phone while sitting at home by using

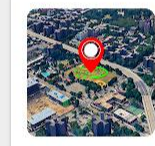
★★★★★



GPS Offline Map

JVSTUDIOS
Live traffic updates, GPS navigation, explore location weather & transit

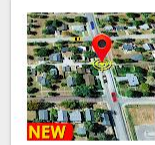
★★★★★



Live Street View

Global Apps Inc - Live Sat
Live street view-earth map satellite, GPS map to view earth 360 street view live

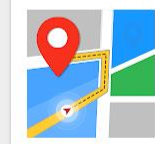
★★★★★



Street View - Ear

Street View Live, GPS Na
Explore the world with 3D live Street Viewer Panorama & Live GPS

★★★★★



GPS, Maps, Voice

AppStar Studios
Find Driving Directions using GPS, Maps, Voice Navigation & Directions

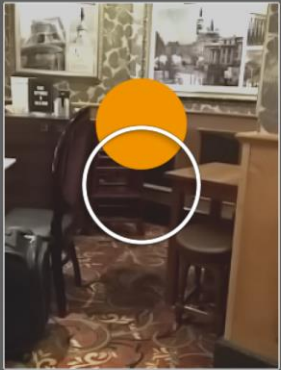
★★★★★

- Use Google Street View App
- Keep phone in same location
- Keep phone at same height
- Rotate and tilt around the lens
- Follow the phones guide points
- Shoot down, centre, up then rotate round
- Unst Boat Haven
 - [On roundme](#)
 - [On google maps](#)

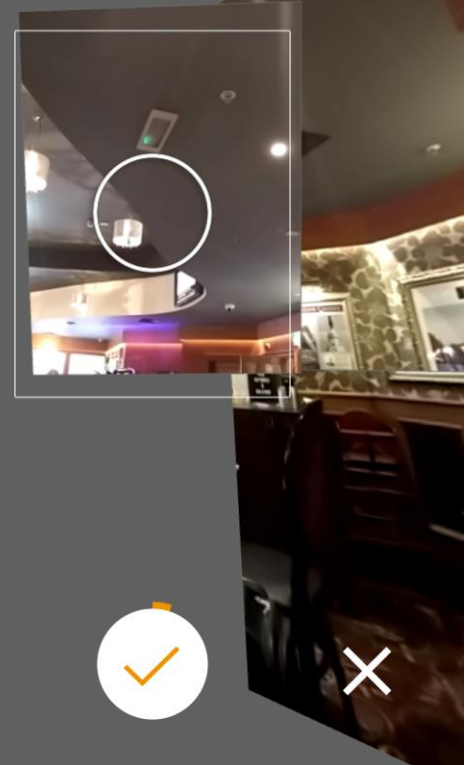
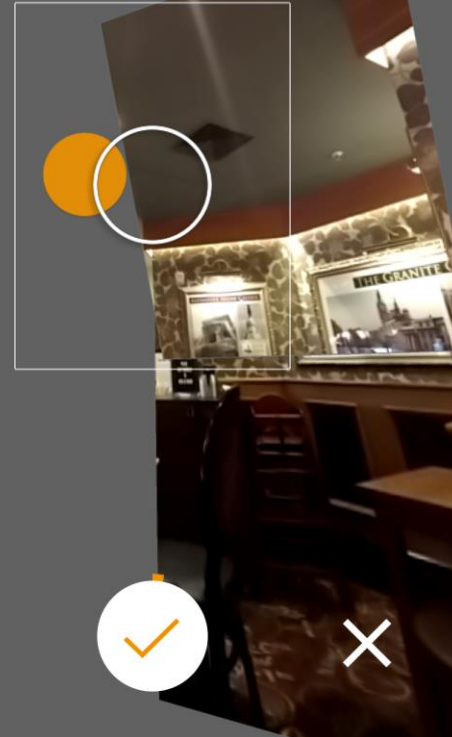


Mobile Phone or Tablet

Mobile and Tablet



Point the camera at the dot



Panoramic Tripod Head

- Configure camera using manual settings
- Use a tripod and panoramic head
- Make sure the set up is level
- Configure so the camera rotates horizontally where the light converges in the lens
- Configure so the camera rotates vertically around the point where the light converges
- Check that there is no parralax
- Ensure each photo overlaps
- Use HDR if there is wide variation in light



Hugin Overview

- Collect your images
 - Check Camera properties
 - Tie your control points
 - Run the optimiser
 - Equirectangular projection
 - Run the stitcher
-
- <http://hugin.sourceforge.net/tutorials/index.shtml>





Hugin - Panorama photo stitcher

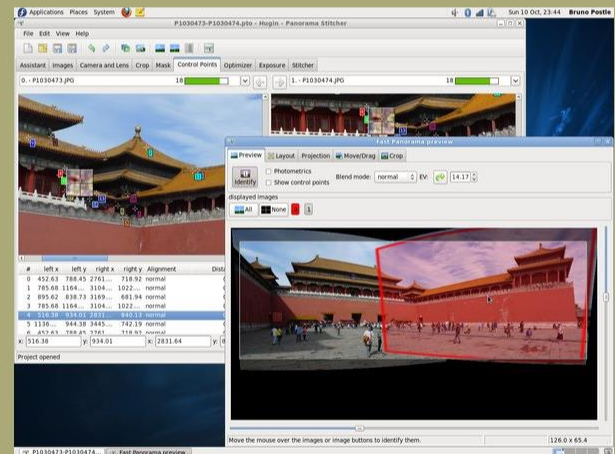


Hugin 2019.2.0 released! 2019-12-30

[Release notes...](#)

Goal: an easy to use cross-platform panoramic imaging toolchain based on [Panorama Tools](#).

With Hugin you can assemble a mosaic of photographs into a complete immersive panorama, stitch any series of overlapping pictures and much more.



<http://hugin.sourceforge.net/>

Status

Hugin has now reached a *stable* state: the software is recommended for general use.

Download locations for stable binaries releases are listed by platform [here](#).

Hugin is in constant development. From time to time somebody is kind enough to publish binaries of development versions.

Hugin has been [localised](#) with Brazilian Portuguese, Bulgarian, Catalan, Chinese Simplified, Chinese Traditional, Czech, Dutch, Danish, English, French, German, Hungarian, Italian, Japanese, Korean, Polish, Russian, Slovakian, Slovenian, Spanish, Swedish and Ukranian translations.

News

Hugin-2019.2.0 released 2019-12-30
Hugin is more than just a panorama stitcher

Hugin-2019.0.0 released 2019-04-06
Hugin is more than just a panorama stitcher

Hugin-2018.0.0 released 2018-02-03



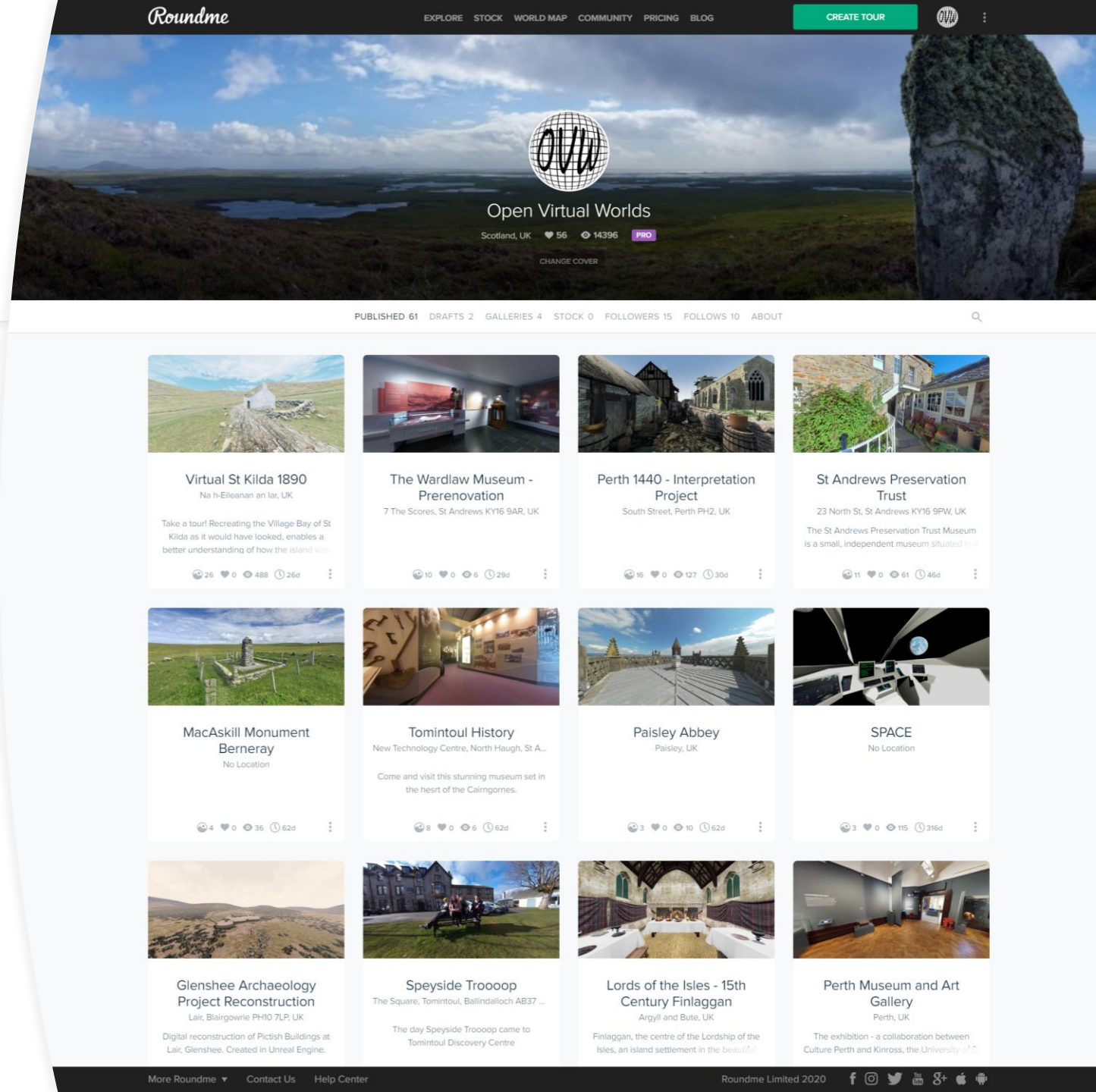


Compare the three methods

- Mobile App: High quality and resolution possible.
- 360 Camera: Quick to take a photo, action shots and video possible.
- Camera: highest quality and resolution possible. More complex process and time consuming process.

Introduction and overview

- Motivation and history
- What is a photosphere
- Workflow and overview
- How to shoot a photosphere
- **How to make a tour**
- How to share a tour
- What about video?
- Sources and resources





Creating the tour

- Roundme
- International Image Interoperability Framework
- Web page embed




Sign Up

Join With Email

ahr1@st-andrews.ac.uk

ahr1@st-andrews.ac.uk


I have carefully reviewed and understood updated [Terms and Conditions](#) and [Privacy Policy](#)

I'm not a robot 
reCAPTCHA
Privacy - Terms

SIGN UP

Join With Social Networks

 Continue with Facebook

 Continue with Twitter

 Continue with Google



Virtual Tours Made Simple

World's most hassle-free 360° VR publishing and panoramic tours authoring platform.

CREATE TOUR





Drag & Drop

your panoramas anywhere, or [browse](#)

Roundme supports only full spherical panoramas in equirectangular projection, 8 bit JPEG or TIFF.

Maximum panorama size: 10,000 x 5,000 px.

Maximum [stereoscopic](#) panorama size: 10,000 x 10,000 px.

You have 15 uploads remaining until Sep 15, 2020

Want more? [Become a](#) **PRO**

Tour Cover ?



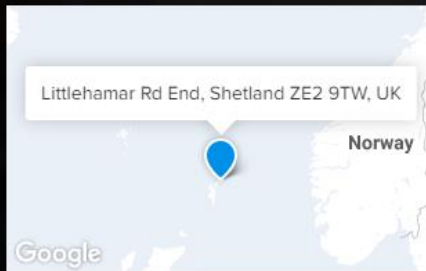
Tour Title

Bobby's Bus Stop: Shetland

Tour description

"The Unst Bus Shelter, also known as Bobby's Bus Shelter, is a bus shelter and bus stop near the village of Baltasound, on the isle of Unst, Shetland, Scotland.
https://en.wikipedia.org/wiki/Unst_Bus_Shelter

Tour Location ?



Tour Categories

Add few keywords to improve the discoverability of your panorama

Sightseeing

Nature

Vehicles



Settings

- Show previews ?
- Allow comments ?
- Share Camera info ?
- Unlisted ?

Camera Info ?

Panorama ID 1968909

RICOH RICOH THETA S
1.31mm / 1/6400s / f2.0 / ISO 100

Panorama ID 1968910

RICOH RICOH THETA S
1.31mm / 1/3200s / f2.0 / ISO 100

Panorama ID 1968911

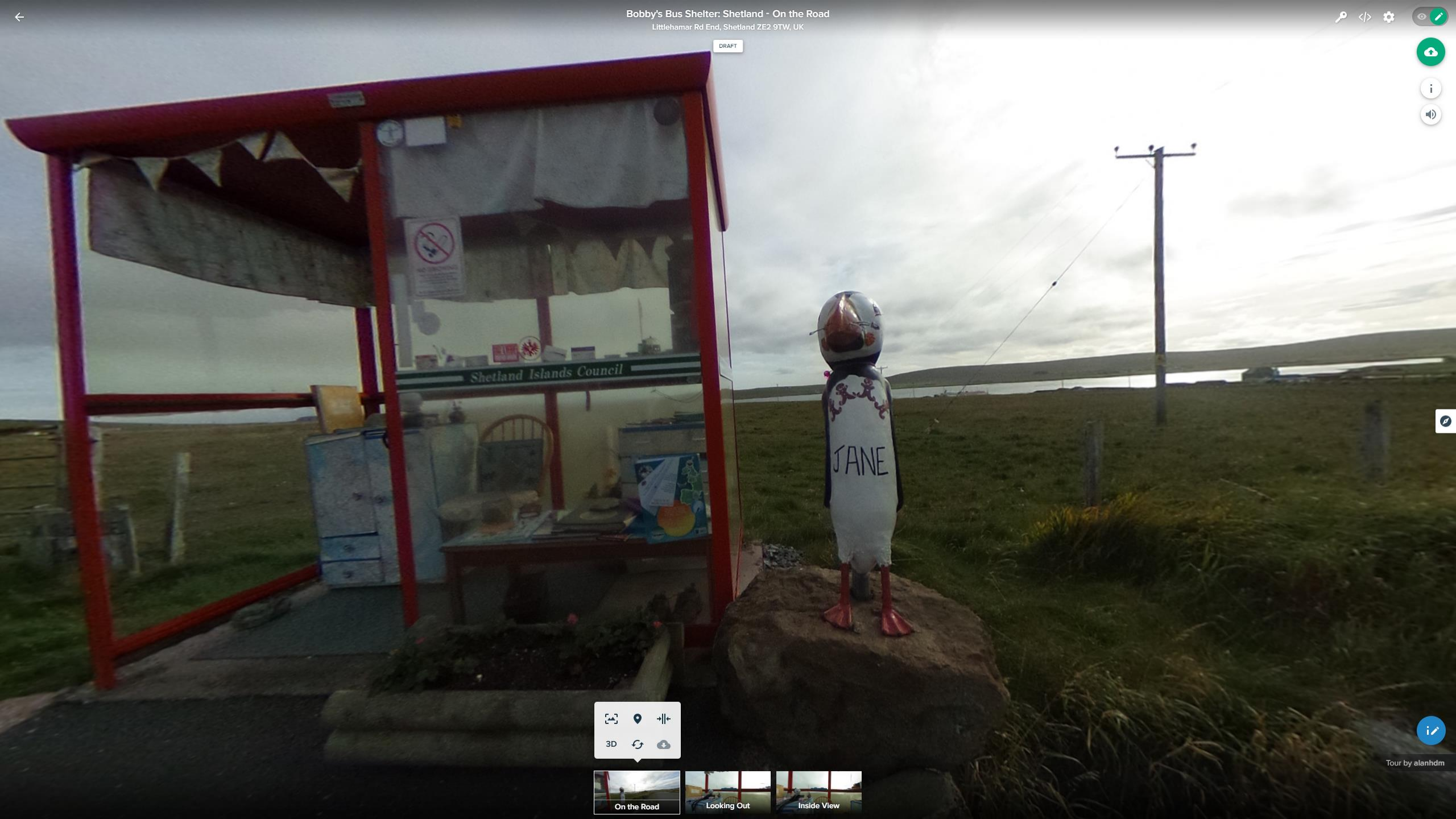
RICOH RICOH THETA S
1.31mm / 1/4000s / f2.0 / ISO 100

OFF Published

CLOSE

SAVE

DRAFT



📐 📍 📏
3D 🔄 ☁️




- On the Road
- Looking Out
- Inside View

On the Road

Custom view direction

SAVE PORTAL

CANCEL



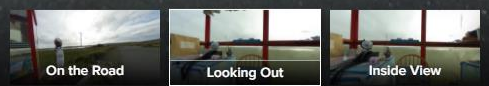
NO SMOKING
There are no smoking premises
it is an offence to smoke
or knowingly to permit smoking
in these premises.
S.I.C. Environmental Services



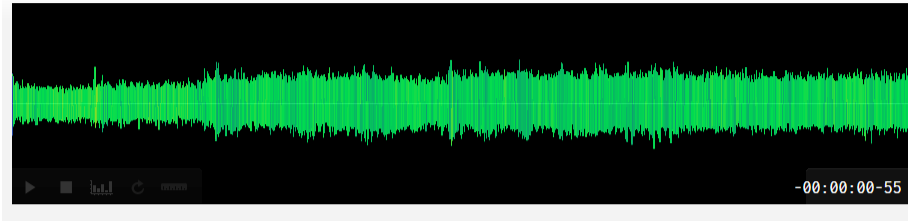
Vertical green sign with text and checkmarks



3D



Bus sound design > 01 bus ORIGINAL .wav



firb
December 9th, 2015

★★★★★ (10)

Downloaded
1870 times

Download

Recording from inside of a bus standing still and driving. Vibrations, motor. Recorded by night with a Zoom H1 V2 in a Journey from Embrun to L'Argentière-la-Bessée in France.

ambient motor vibrations inside bus field-recording

creative commons This work is licensed under the Attribution License.

Comments

- DvOr** 1 month, 2 weeks ago
aaa just what I needed, thank you! You'll hear it in one of the future eps of my podcast, Dos: After You!
[Report spam/offensive](#)
- sly34** 3 months, 1 week ago
MERCI trop cool
[Report spam/offensive](#)
- elastcida** 11 months, 1 week ago
thx
[Report spam/offensive](#)
- varseop** 1 year, 7 months ago
thank you
[Report spam/offensive](#)
- ValentinaDA** 1 year, 8 months ago
Aaaah thank you!!!!!!!
[Report spam/offensive](#)

previous next 1 2 3 | 11 commentss

Leave a comment:

Comment:

Post comment

Type	Wave (.wav)
Duration	01:46:144
Filesize	53.6 MB
Samplerate	88200.0 Hz
Bitdepth	24 bit
Channels	Stereo

- Pack: Bus sound design
- Geotag
- Similar sounds
- Bookmark this sound
- Follow this user

Sound illegal or offensive? [Flag it!](#)

Share url:

Like 0 Tweet tumblr Embed

330680_firb_01-bus-original

File Edit Select View Transport Tracks Generate Effect Analyze Tools Help

MME Microphone (VF0610 Live! Cam So) 1 (Mono) Recording Chann... Speakers (Focusrite Usb Audio)

0 5 10 15 20 25 30 35 40 45 50 55 1:00 1:05 1:10 1:15 1:20 1:25 1:30 1:35 1:40 1:45

X 330680__fir
Mute Solo
L R
Stereo, 88200Hz
32-bit float

Project Rate (Hz) Snap-To Start and End of Selection

88200 Off 00 h 00 m 00.000 s 00 h 00 m 00.000 s 00 h 00 m 00 s

Stopped.




330680__firb__01-bus-original.mp3




Reach: 30°




Repeat: Loop

Delay: 0 s

CANCEL  SAVE







Bobby's Bus Shelter: Shetland - On the Road
Littlehamar Rd End, Shetland ZE2 9TW, UK

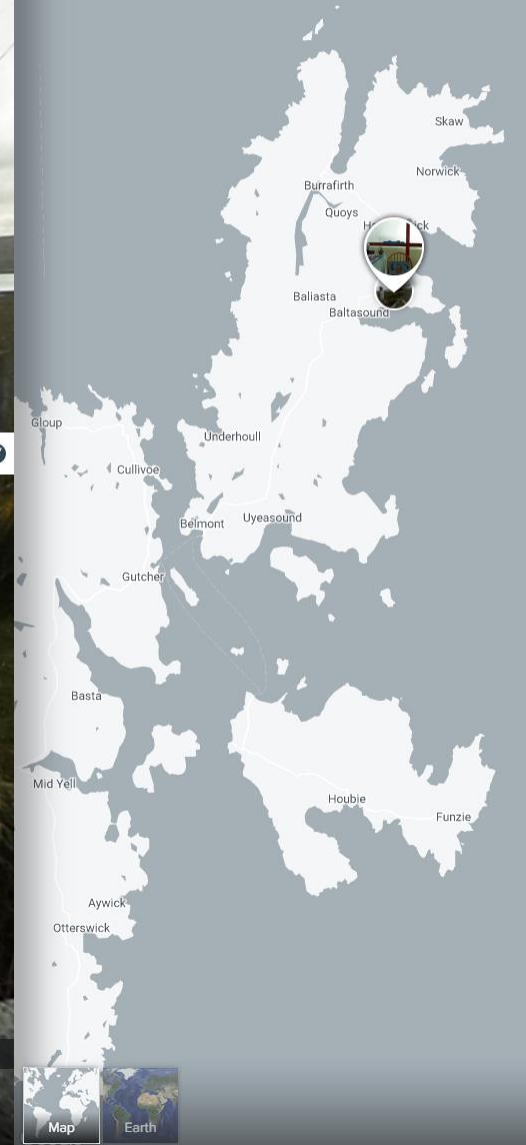


Press F11 to exit full screen

DRAFT



3D navigation controls including icons for 3D view, location, and volume.



Tour by alanhdm

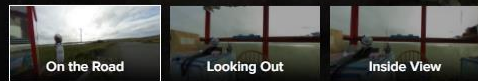
DRAFT



- WebVR mode
- Fullscreen
- Share & Embed
- Projections
- QTVR Navigation
- Autorotation On
- Autofollow On
- Slideshow
- Help
- Feedback



Tour by alanhdm



Press **F11** to exit full screen

← Back

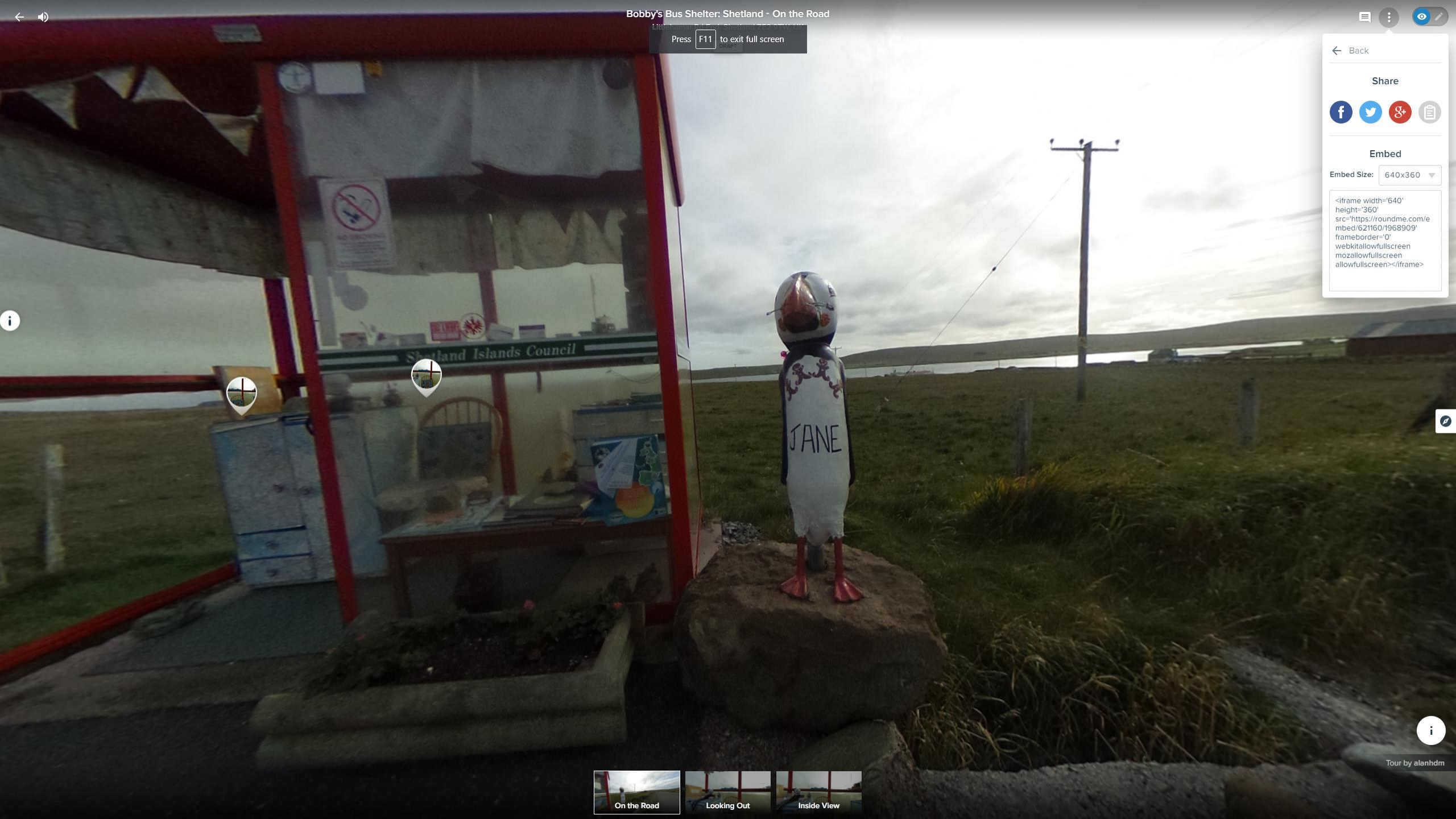
Share

[f](#) [t](#) [g+](#)

Embed

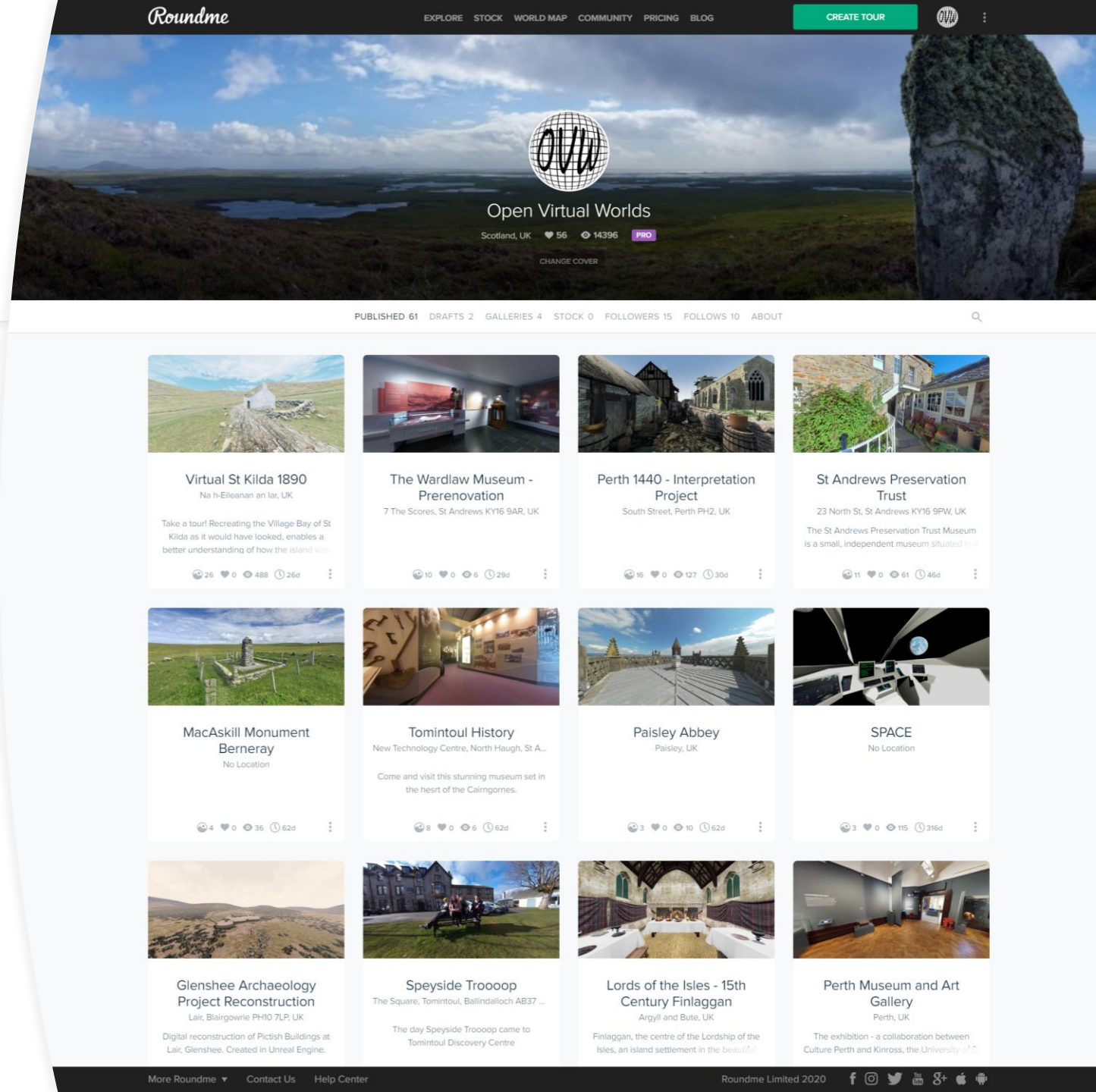
Embed Size:

```
<iframe width='640' height='360' src='https://roundme.com/embed/621160/1968909' frameborder='0' webkitallowfullscreen mozallowfullscreen allowfullscreen></iframe>
```



Introduction and overview

- Motivation and history
- What is a photosphere
- Anatomy of a tour
- How to make a tour
- **How to share a tour**
- What about video?
- Sources and resources



How to share a tour

- Interactive Map: Openstreet maps, Google Streetview
- Social Archive: roundme
- Embed in a web page
- Virtual Reality Installation
- Virtual Reality App
- Social Media: Facebook, Youtube, Instagram



St Andrews Preservation Trust



Welcome to the tour of St Andrews Preservation Trust museum. Here you will be able to explore the museum, enjoy reconstructions of past life in St Andrews and relax in its gardens!

START



Create Hotspot

CANCEL

Title...

Description...



3D



Reception



Rear Entrance



D'Arcy Thompson



Sensory Garden



West Wall



Museum Lawn



Wash House



Blacksmithing Exhibit...



First Floor





St Andrews Preservation Trust - D'Arcy Thompson

23 North St, St Andrews KY16 9PW, UK



Tour by Open Virtual Worlds



Reception



Rear Entrance



D'Arcy Thompson



Sensory Garden



West Wall



Museum Lawn



Wash House



Blacksmithing Exhibit...



First Floor



Armoural

Set into the eastern wall are two armourial stones that likely originate from the Cathedral.



Original

The original outside toilet for the house is located in the North-East corner of the D'Arcy Thompson garden. It is known as a 'double-seater' as it accommodates two people. This was the only form of sanitation for all four original dwellings in the house.



Herb Garden

This area of the garden also contains a herb border set against a high hedge. Within the border are Rosemary, Sage, Lavender and a variety of mints, along with Marjoram, Fennel and Lemon balm.



Reception



Rear Entrance



D'Arcy Thompson



Sensory Garden



West Wall



Museum Lawn



Wash House



Blacksmithing Exhibit...



First Floor



St Andrews Preservation Trust - D'Arcy Thompson

23 North St, St Andrews KY16 9PW, UK



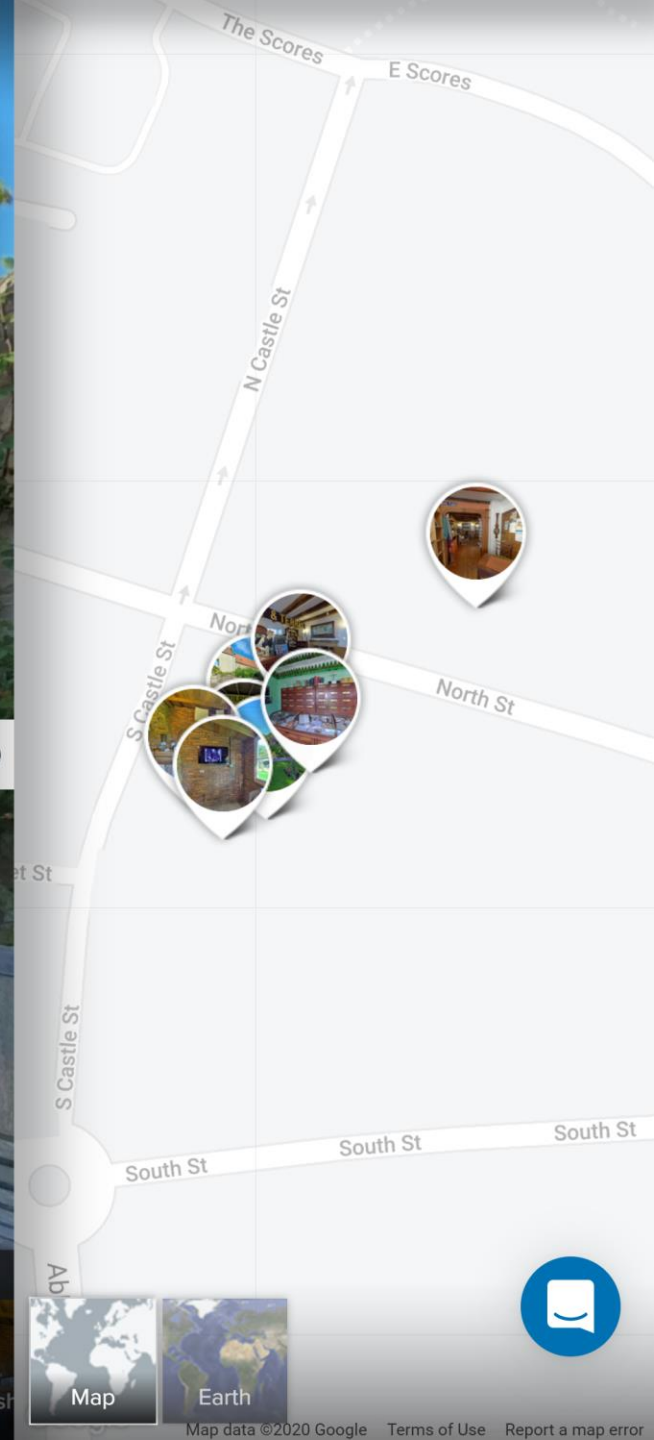
← Back

Share

Embed

Embed Size: 640x360

```
<iframe width='640' height='360' src='https://roundme.com/embed/558136/1835841' frameborder='0' webkitallowfullscreen mozallowfullscreen allowfullscreen></iframe>
```



- Tour by Open Virtual Worlds
- Reception
 - Rear Entrance
 - D'Arcy Thompson
 - Sensory Garden
 - West Wall
 - Museum Lawn



Share to News Feed or story

Alan Miller
Take a virtual tour of tour of St Andrews Preservation Trust 😊 feeling happy



ROUNDME.COM
St Andrews Preservation Trust from 23 North St, St Andrews KY16 9PW, UK

Alan Miller is 😊 feeling happy with Catherine Anne Cassidy and 4 others at St Andrews Preservation Trust Museum & Garden.
2 m · St Andrews · 🌐



ROUNDME.COM
St Andrews Preservation Trust from 23 North St, St Andrews KY16 9PW, UK
The St Andrews Preservation Trust Museum is a small, independent museum situated in a 17th...

Sue Johnston
Like Comment Share
Write a comment...

Barbados Museum & Historical Society
8 m · 🌐

Yesterday, we asked if you could identify the shell located to the top front on the left of the display case.

If you said "King Helmet" you were correct!

Classified as Cassis tuberosa, this giant sea snail features a heavy shell, which has whorls which look similar to a crown, which lends to its name.



Catherine Anne Cassidy, Iain Oliver, Sarah Kennedy, CJ Davies, Bess Ri

Tag friends, Check in, Feeling/Activity

News Feed, Your Story

Cancel

Sponsored

How to focus during global chaos
blog.dropbox.com

Your Fundraiser - An At Home Service Project
lionsclubs.org

Your Pages

Open Virtual Worlds
20+ Notifications
Create Promotion

Birthdays

DrishyaHolidays Delhi India and 4 others have birthdays today

Contacts

- Sara Allkins
- Catherine Anne Cassidy
- Kate Miller
- Rosa Rice
- Caroline Wickham-Jones
- Jacek Dziamecki
- Andy Walker
- John Foley
- Skotta Valgardsdottir
- Hugh Miller
- Marie Clarke
- Cathy Cruickshank
- Ian Allinson
- Andy Wilson



The St Andrews Preservation Trust Museum

4.5 ★★★★★ (36)
Museum
Temporarily closed

- Directions
- Save
- Nearby
- Send to your phone
- Share

Cozy museum in a 17th-century home featuring art & objects relating to the region & its inhabitants.

- 12 North St, St Andrews KY16 9PW
- 86R5+5V St Andrews
- standrewspreservationtrust.com
- 01334 477629
- Temporarily closed
- Add a label

Suggest an edit

Add missing information

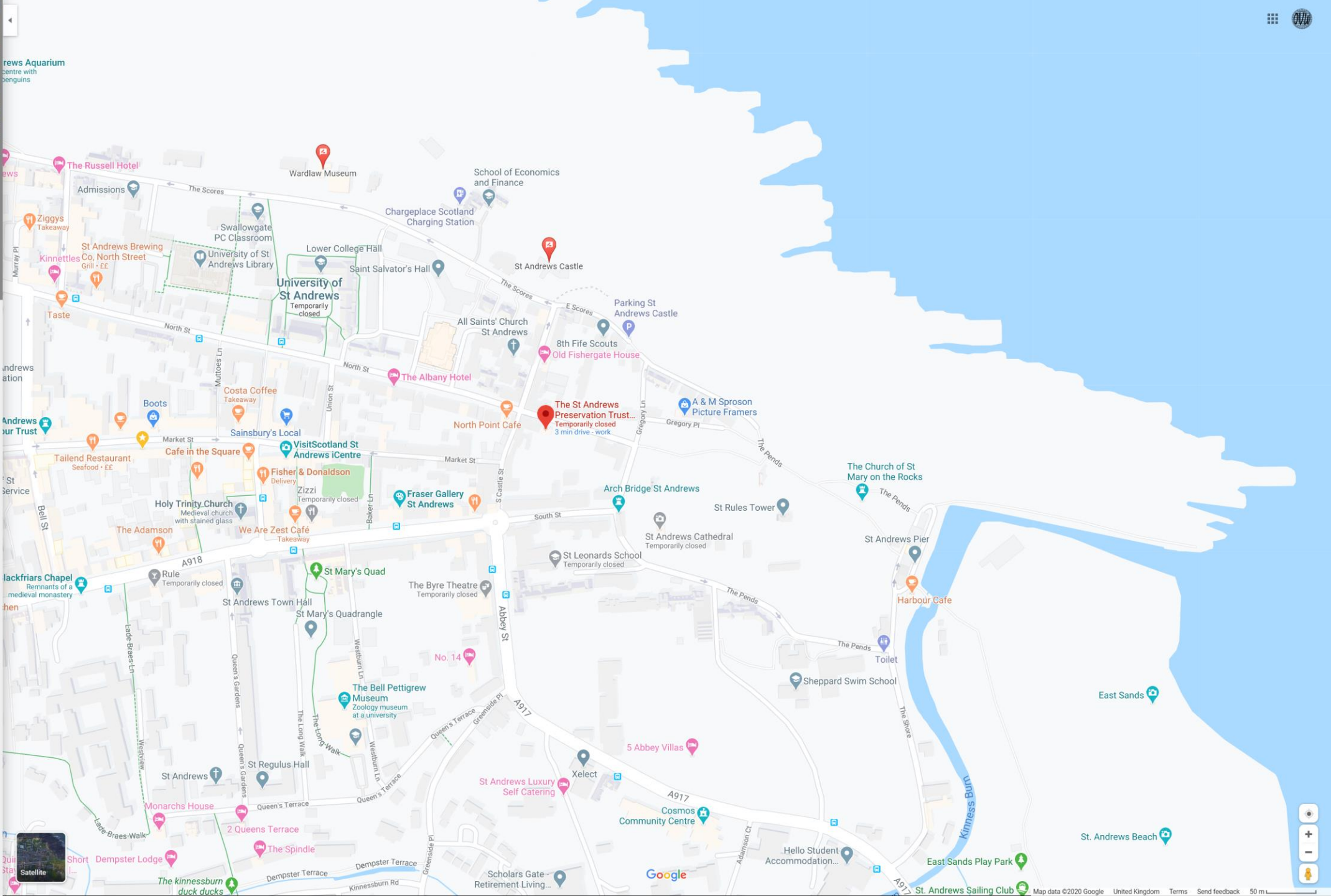
- Add hours

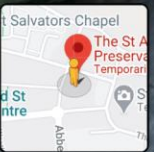
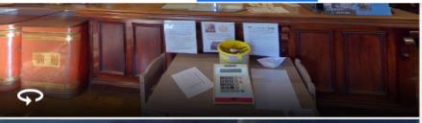
Photos



Add a photo

Review summary







The St Andrews Preservation Trust Museum

4.5 ★★★★★ (36)

Museum

Temporarily closed

Directions
 Save
 Nearby
 Send to your phone
 Share

Cozy museum in a 17th-century home featuring art & objects relating to the region & its inhabitants.

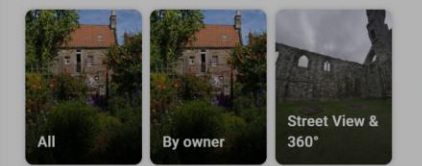
- 12 North St, St Andrews KY16 9PW
- 86R5+5V St Andrews
- standrewspreservationtrust.com
- 01334 477629
- Temporarily closed
- Add a label

Suggest an edit

Add missing information

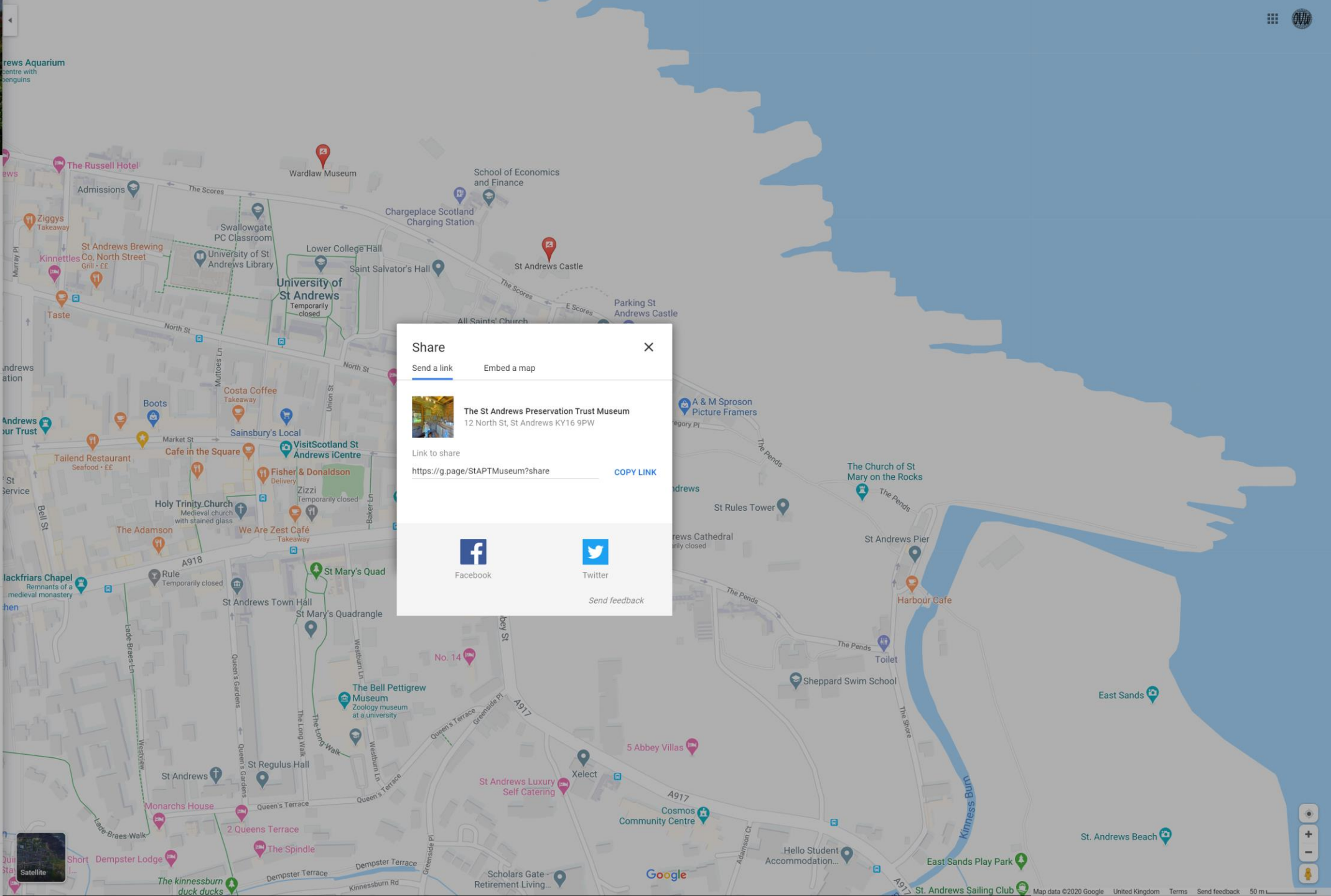
Add hours

Photos



Add a photo

Review summary



Share [X]

Send a link Embed a map

The St Andrews Preservation Trust Museum
12 North St, St Andrews KY16 9PW

Link to share

<https://g.page/STAPTMuseum?share> COPY LINK

Facebook Twitter

Send feedback



Virtual Reality



MAPS



Earth

Labels on

3D on



Traffic



Transit



Bicycling



Terrain



Notifications



Your places



Your contributions



Your timeline



Share or embed map



Print

Take a tour

Language

Tips and tricks

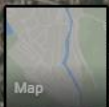
Get help

Add a missing place

Send feedback

Search settings

History



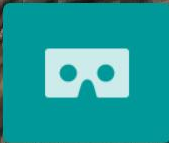
N
S

Google



3D





Music icon | Progress bar | Volume icon | VR icon





News

You are here: University » News » News archive » 2017

- News archive
- 2018
- 2017**
- 2016
- 2015
- 2014
- 2013
- 2012
- 2011
- 2010
- 2009
- 2008
- 2007
- 2006
- 2005
- 2004
- 2003
- 2002
- 2001
- 2000

Press Office

[« Back to news items](#)

New technology reveals old Edinburgh

Friday 17 March 2017



RSS feeds

[University of St Andrews News](#)

[University Research](#)

[What is RSS?](#)

The lost townscape of sixteenth-century Edinburgh has been brought back to life by researchers at the University of St Andrews.

The new digital reconstruction is the first to be created of the period, and is based on a drawing from 1544, thought to be the earliest accurate depiction of the capital.

The virtual time travel technology – which will be released as an app in May – provides a unique window into the capital around the time of the birth of Mary Queen of Scots.

The technology is the result of a collaboration between St Andrews historians, art historians, computer scientists and University spinout company Smart History. The result is an interactive tour of the capital as it appeared in 1544, just before the city was sacked and burned by an English army led by Edward Seymour, Earl of Hertford.

Dr Bess Rhodes, an expert on sixteenth-century Scottish history who collaborated on the reconstruction, said: "For the first time visitors and residents can compare the city they know with the capital of James V and Mary Queen of Scots. It has been amazing seeing the recreation of a lost townscape. I hope this project makes the public more aware of the layers in the capital's history, and furthers understanding of the complex way in which Edinburgh evolved."



The reconstruction is inspired by a sixteenth-century drawing of Edinburgh made by Richard Lee, an English military engineer who later designed the massive artillery



Archive





Creating an Archive

- Use the best quality possible
- Include the original photographs
 - This enables re-use and guards against obsalesence.
- Create meta data:
 - Location, format, date
- Upload to Social Archive Site
 - For example roundme.com



Immovable Heritage Upload Form

Form Type:

Name:

Media: **Primary Media:**

Start Date of Existence: **End Date of Existence:**

Drag & drop files here ...

Select files...

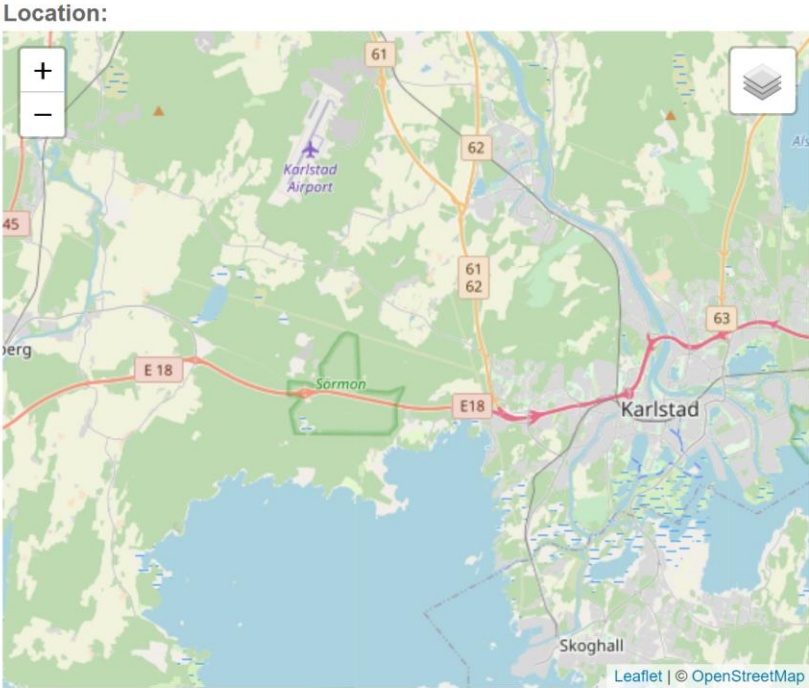
Language:

Contact:

Cleared for Release:

CUPIDO only:

Description:



Coords:

File:

Drag & drop files here ...

Select files...

 Browse ...

URL:

Sketchfab or Roundme embed URL for objects

Reporting Period:

Reporting 1

Name:

Title

Type:

Audio

Format:

Select of Format

Layers:

Nothing selected

Media Creator:

Media Creator

License to End User:

In Copyright (InC)

Media Creator URL:

URL

License Chooser

Source:

Cancel

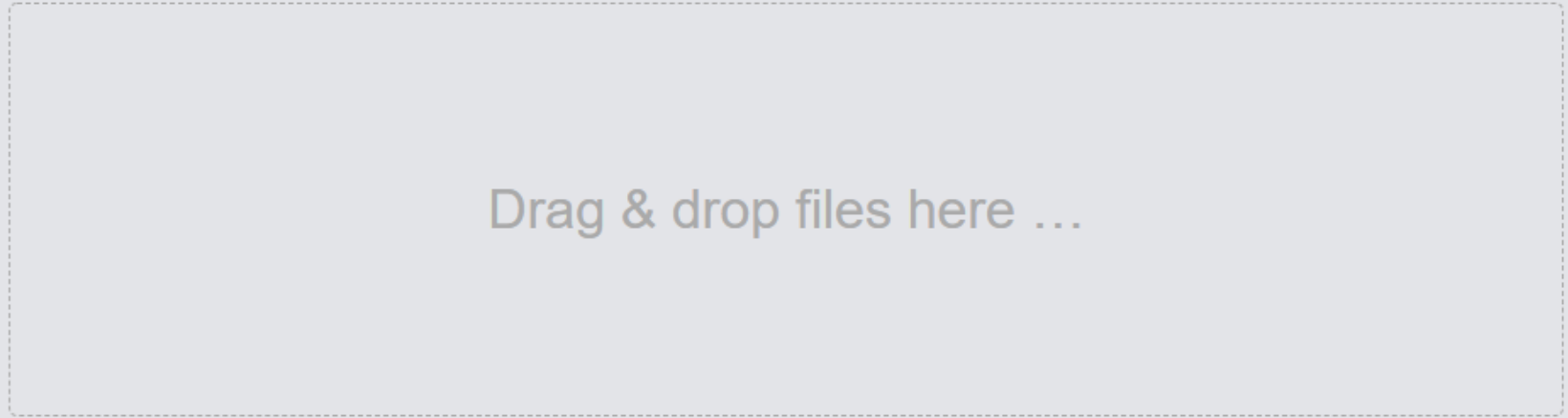
Description:

Description

Add Media



File:



Select files...

 Browse ...

URL:

Sketchfab or Roundme embed URL for objects

Name:

Title

Type:

Audio

Format:

Select of Format

Layers:

Nothing selected

Media Creator:

Media Creator

License to End User:

In Copyright (InC)

Media Creator

License Checker

Name:

Type:

Format:

Layers:

Media Creator:

License to End User:

Media Creator URL:

License Chooser

Date Created:

Source:

Organization:

Item:

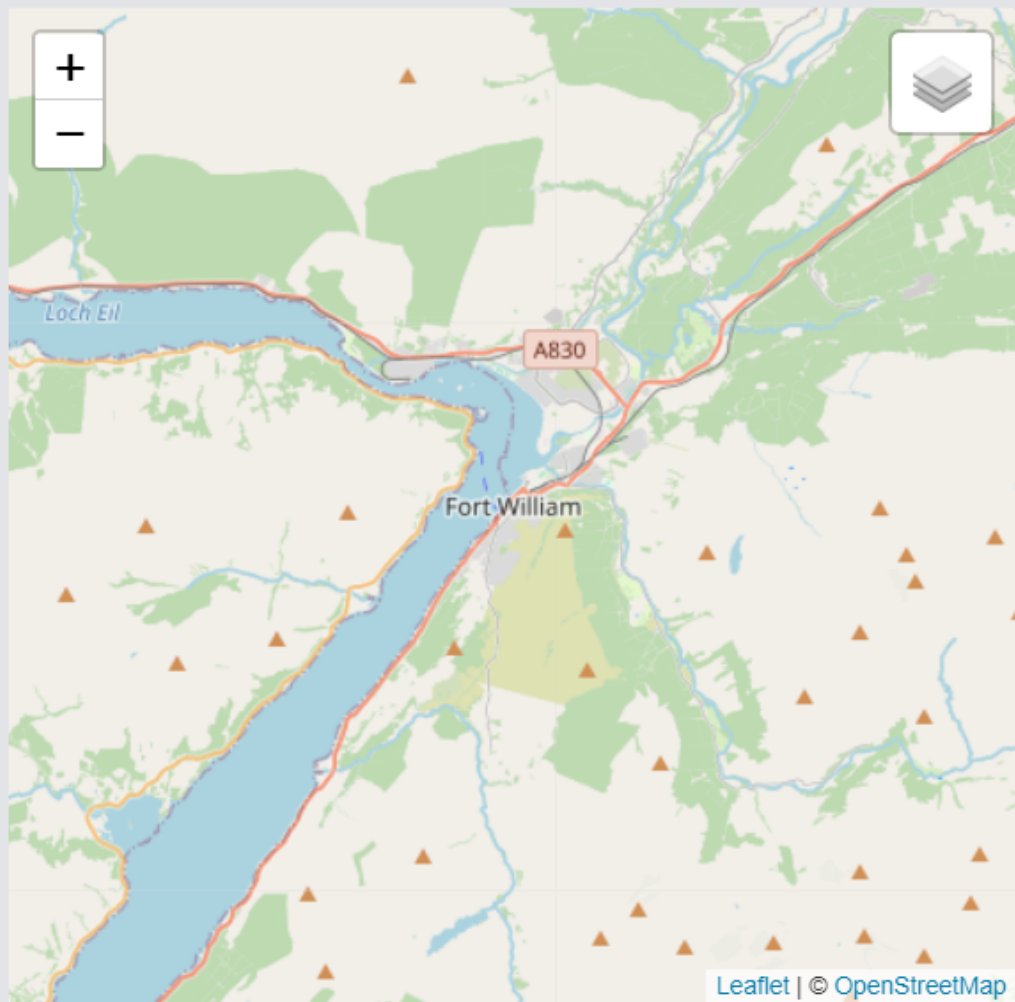
Description:

Page URL:

Subject:

Tags:

Location:



Current:



Latitude

Longitude

Origin:



Latitude

Longitude

Cleared for Release:



Archive:




Social Archive:



only:



Cancel

- 
- https://en.wikipedia.org/wiki/Unst_Bus_Shelter
 - <http://www.unstbusshelter.shetland.co.uk/p/home.html>
 - http://news.bbc.co.uk/1/hi/scotland/north_east/8239248.stm



Sharing

Facebook Galleries

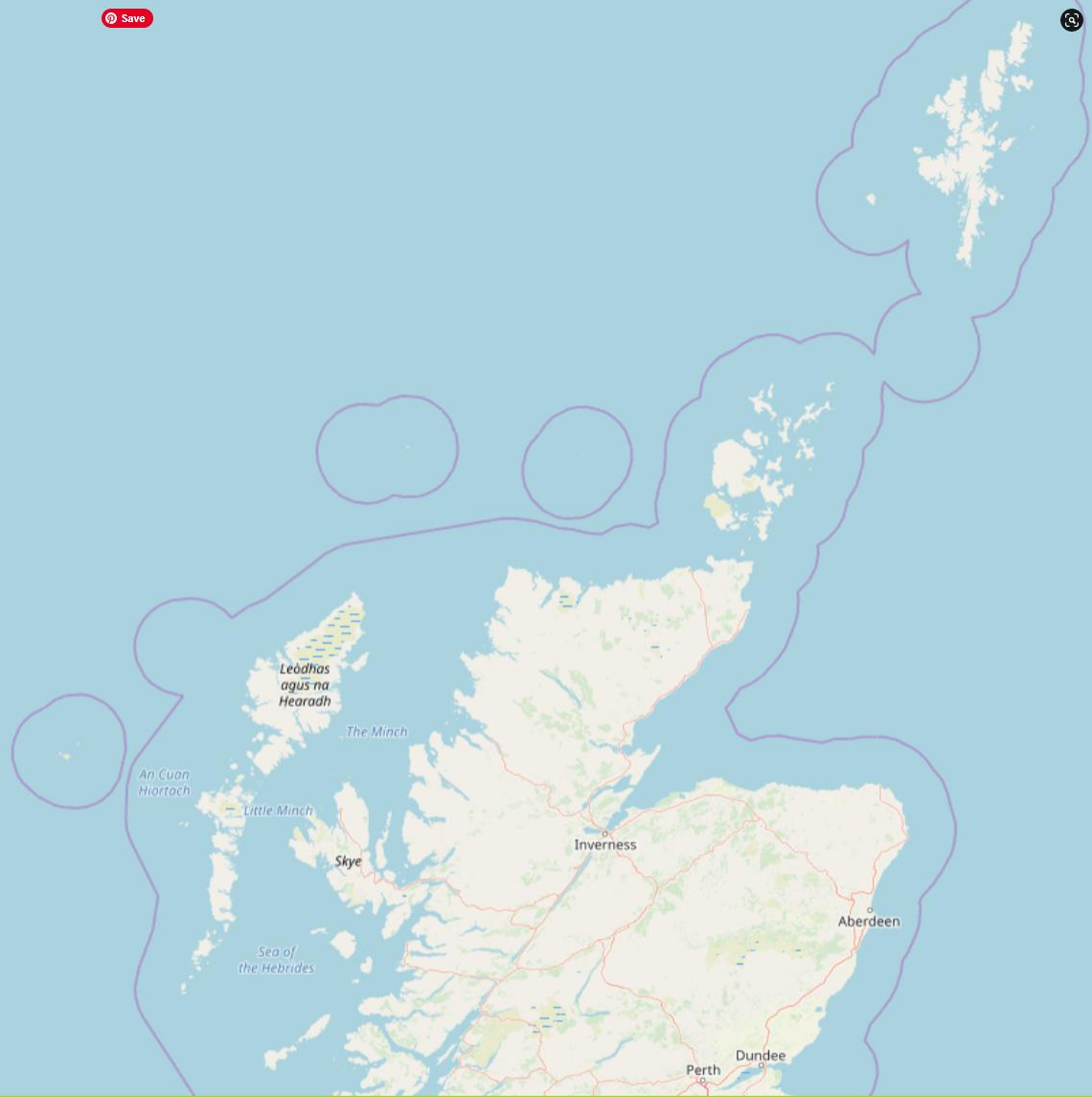
- Native upload
- Gets more hits
- Organised into Galleries

Google Maps

- Upload photospheres
- Organise them into tours, using Google Street View App



Save



LOG OUT UPLOAD MAP

Exhibits



Archives



Add a Place

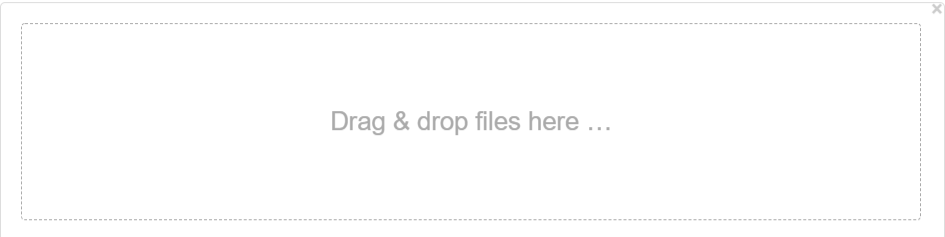
Form Type	Place						
Name:	Title						
Media:	Nothing selected	Primary Media:	Nothing selected				
	<input type="button" value="Add Media"/>		<input type="button" value="Refresh List"/>				
Building Date:							
New This Year:	<input type="checkbox"/>	Included This Year:	<input type="checkbox"/>				
Language:	Language						
Opening Date 1:							
Opening Date 2:							
DDO only:	<input checked="" type="checkbox"/>						
	<div style="border: 1px dashed gray; padding: 10px; text-align: center;">Drag & drop files here ...</div>						
	<input type="button" value="Select files..."/>	<input type="button" value="Browse ..."/>					
Description:	Description						
Activities:	Activities						
Architect Name:	Name (s)						
Type:	Museum	Community:	Simple identification of the associated community				
Opening Time:	Timetable. Opening hour, closing hour		Opening Time:	Timetable. Opening hour, closing hour			
Address Line 1:							
Address Line 2:							
Place:	Town, City ...	WC:	<input type="checkbox"/>	Disabled WC:	<input type="checkbox"/>		
Postcode:				Disabled Access:	<input type="checkbox"/>	Refreshment:	<input type="checkbox"/>
Country:	United Kingdom	Events For Children:	<input type="checkbox"/>	Parking:	<input type="checkbox"/>		
Area:	Aberdeen City	Hearing Loop:	<input type="checkbox"/>	Limited Access:	<input type="checkbox"/>		
Social Media:		Not Accessible:	<input type="checkbox"/>	Home Page:			



Coords:

Latitude	Longitude
----------	-----------

File:



Select files... Browse ...

URL:

https://...

Name:

Title

Type:

Image

Format:

Select a Format

Layers:

Nothing selected

Media Creator:

Media Creator

License to End User:

Pick One

Media Creator URL:

URL

License Chooser

Source:

Place:

Nothing selected

Description:

Description

Subject:

Nothing selected

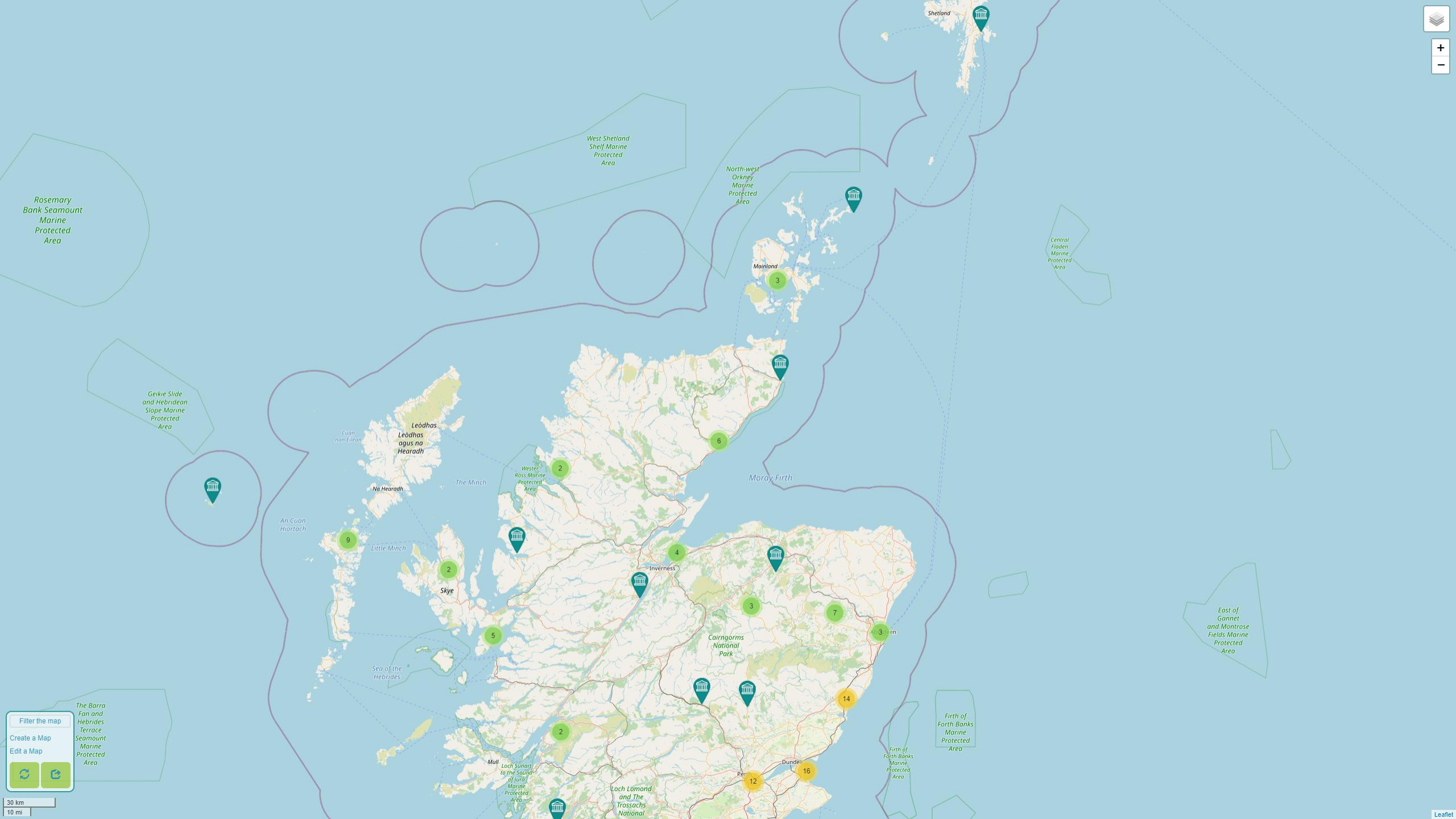
Tags:

Location:



Coords:


Cancel



Filter the map
Create a Map
Edit a Map

30 km
10 mi

Tomintoul Museum



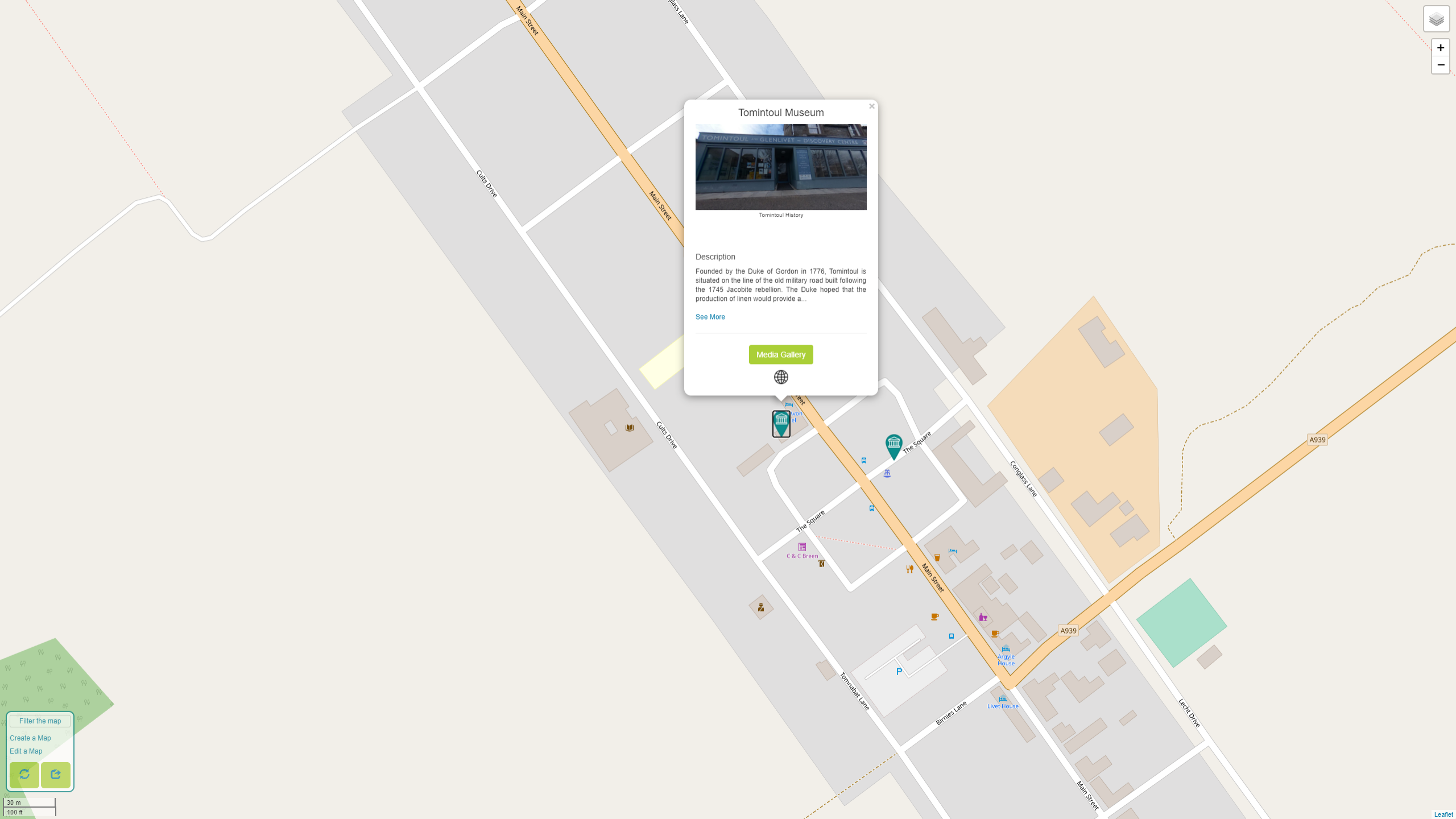
Tomintoul History

Description

Founded by the Duke of Gordon in 1776, Tomintoul is situated on the line of the old military road built following the 1745 Jacobite rebellion. The Duke hoped that the production of linen would provide a...

[See More](#)

[Media Gallery](#)



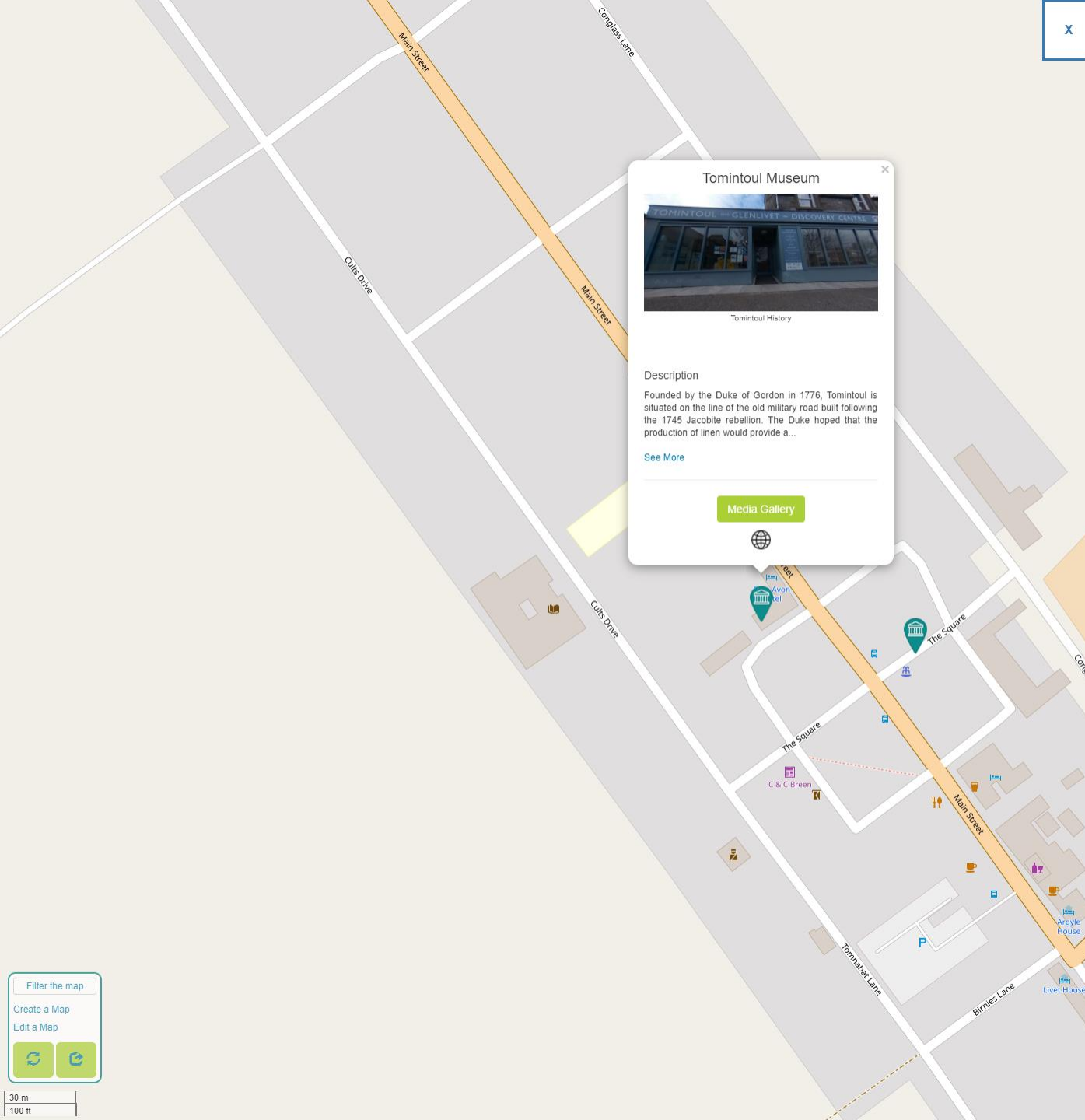
Filter the map

Create a Map


Edit a Map



30 m
100 ft



Tomintoul Museum x



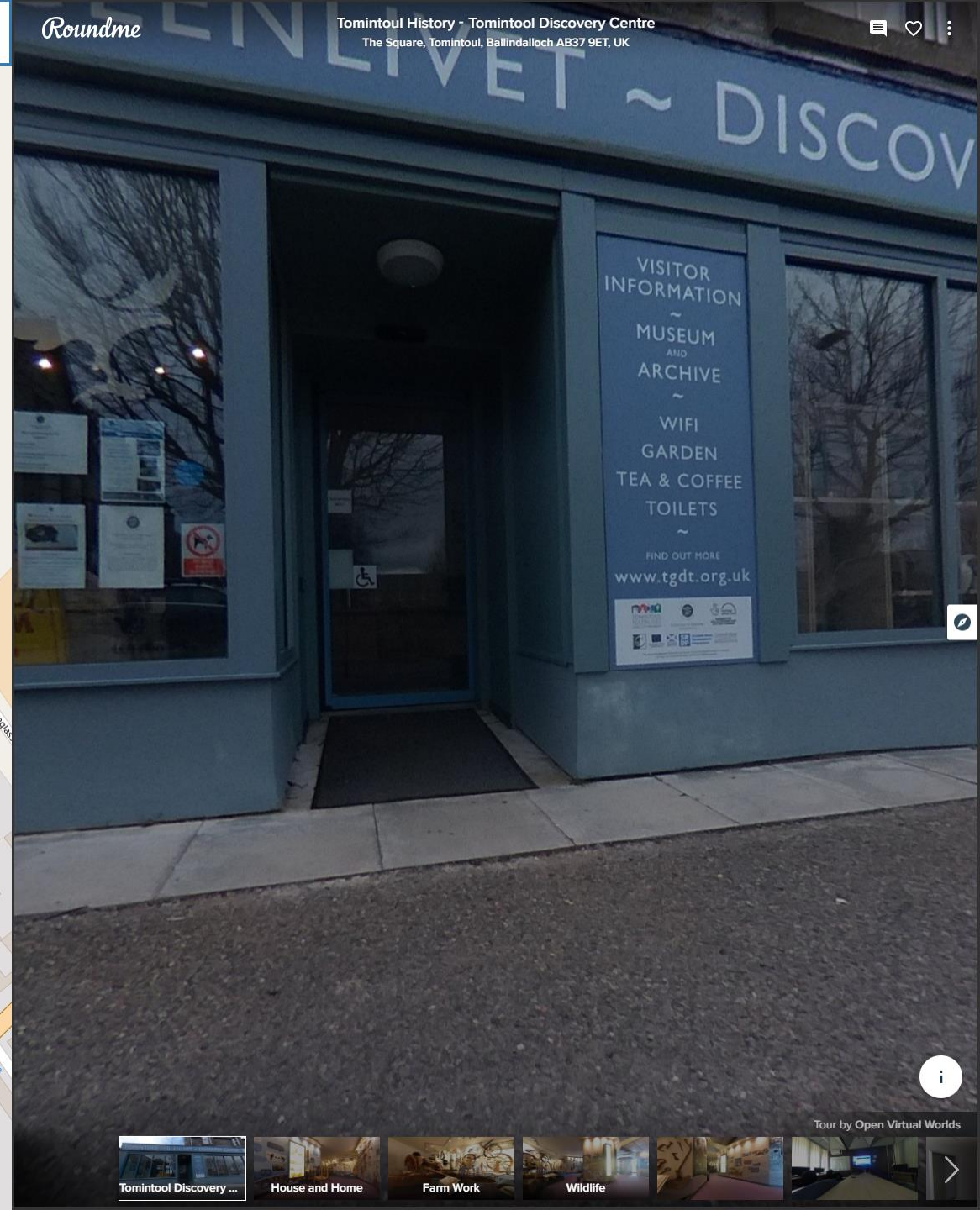

Tomintoul History

Description

Founded by the Duke of Gordon in 1776, Tomintoul is situated on the line of the old military road built following the 1745 Jacobite rebellion. The Duke hoped that the production of linen would provide a...

[See More](#)

Media Gallery



x

Roundme


Tomintoul History - Tomintool Discovery Centre
The Square, Tomintoul, Ballindalloch AB37 9ET, UK



Filter the map

Create a Map

Edit a Map

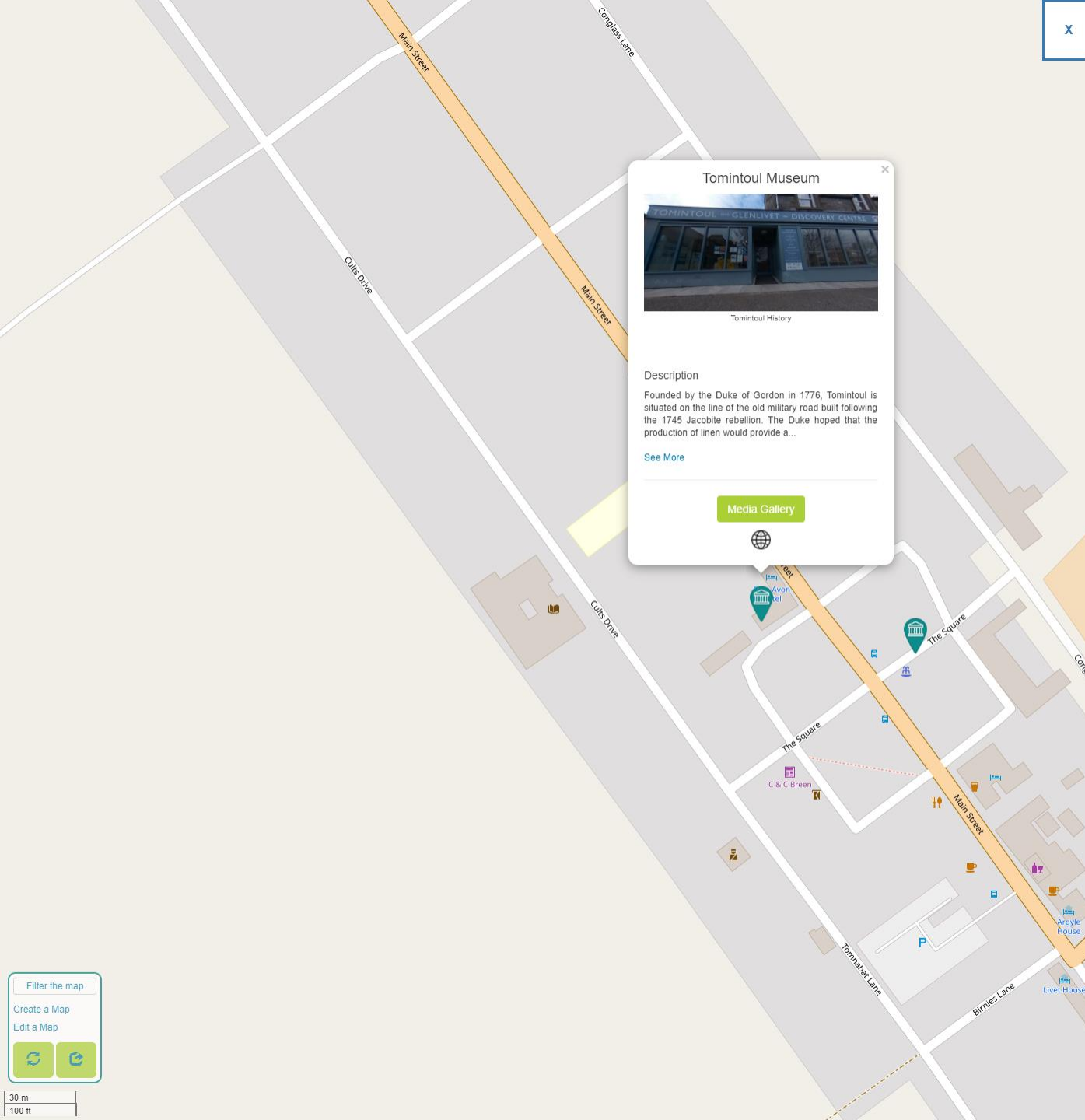


30 m
100 ft




Tour by Open Virtual Worlds





Tomintoul Museum



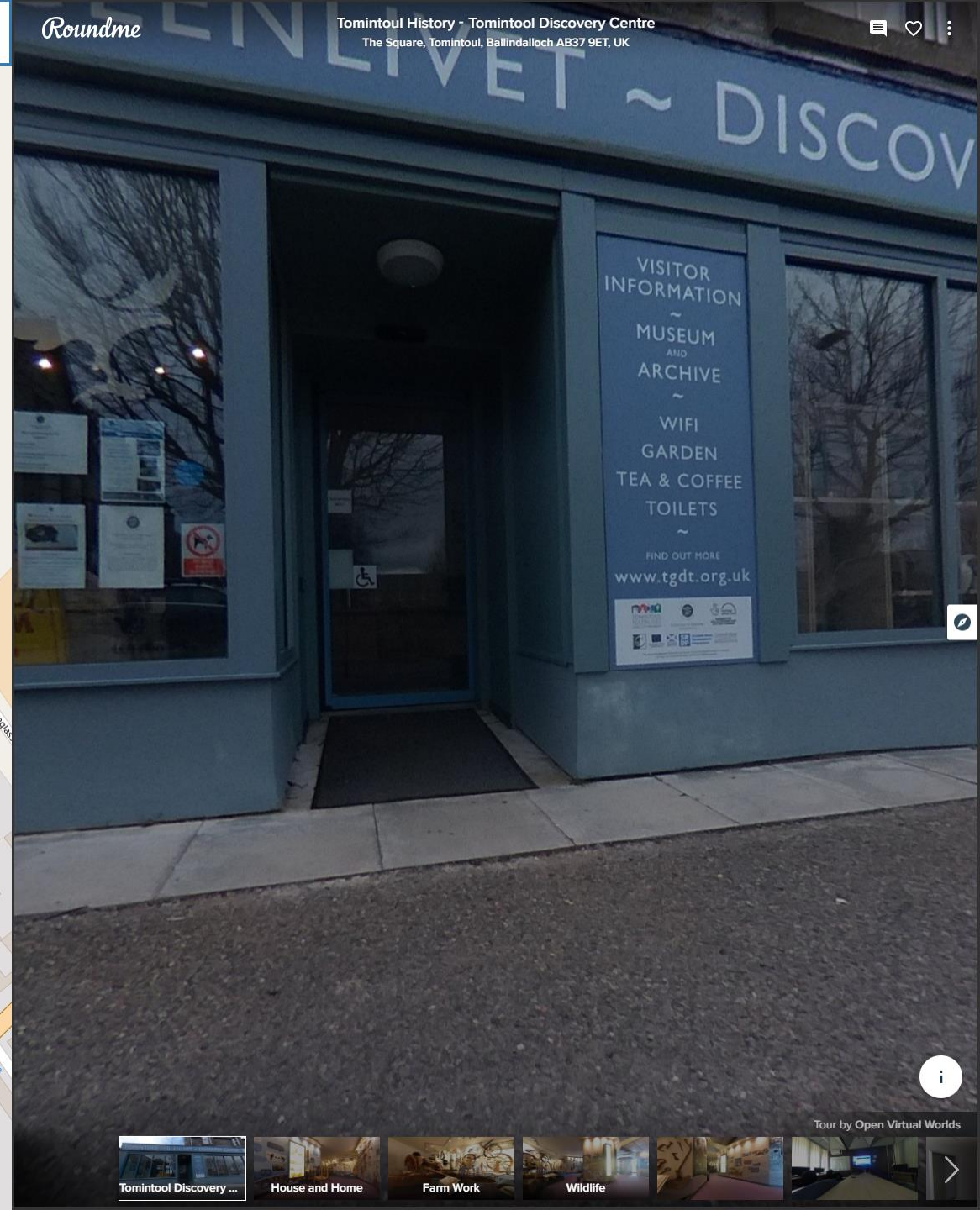
Tomintoul History

Description

Founded by the Duke of Gordon in 1776, Tomintoul is situated on the line of the old military road built following the 1745 Jacobite rebellion. The Duke hoped that the production of linen would provide a...

[See More](#)

[Media Gallery](#)



X

Roundme

Tomintoul History - Tomintool Discovery Centre
The Square, Tomintoul, Ballindalloch AB37 9ET, UK



Filter the map

Create a Map

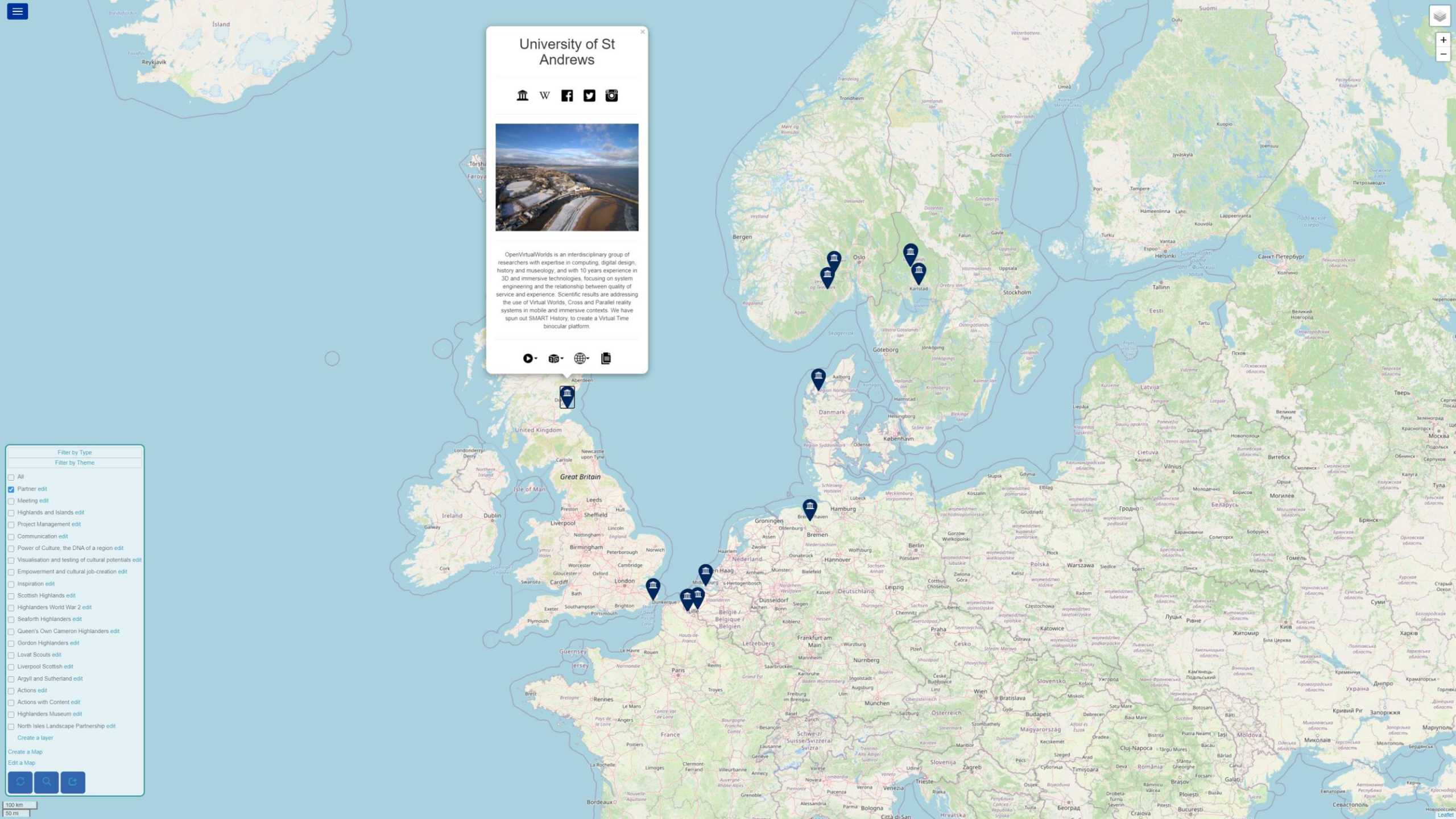
Edit a Map

Map control icons for refresh and share.

30 m
100 ft

Tour by Open Virtual Worlds

A navigation bar for a virtual tour with thumbnails for 'Tomintool Discovery ...', 'House and Home', 'Farm Work', 'Wildlife', and a right arrow.



University of St Andrews

OpenVirtualWorlds is an interdisciplinary group of researchers with expertise in computing, digital design, history and museology, and with 10 years experience in 3D and immersive technologies, focusing on system engineering and the relationship between quality of service and experience. Scientific results are addressing the use of Virtual Worlds, Cross and Parallel reality systems in mobile and immersive contexts. We have spun out SMART History to create a Virtual Time binocular platform.

Filter by Type

Filter by Theme

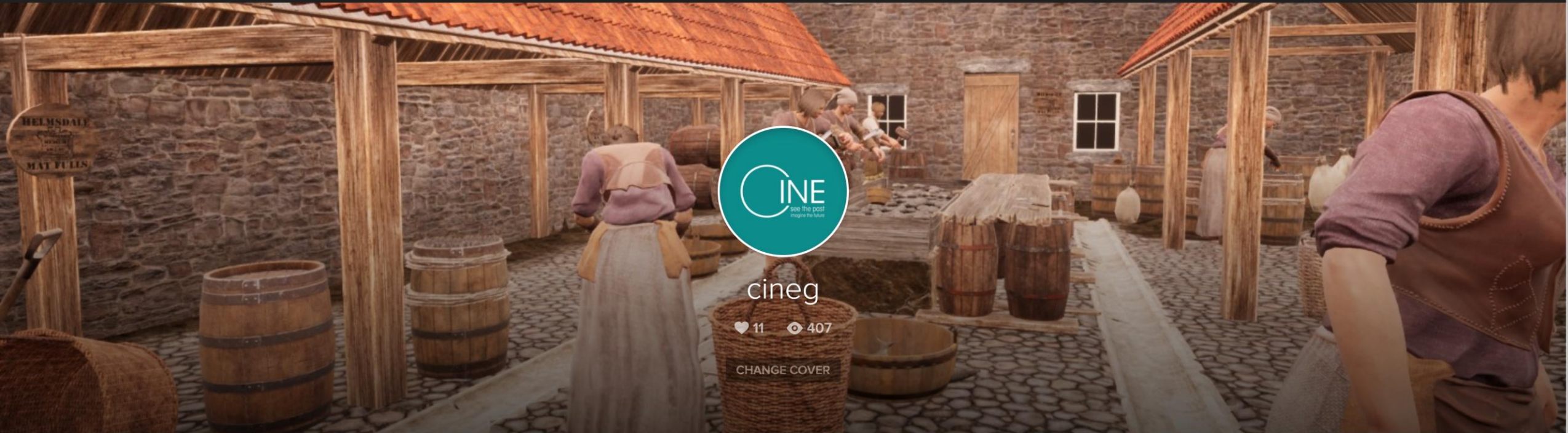
- All
- Partner edit
- Meeting edit
- Highlands and Islands edit
- Project Management edit
- Communication edit
- Power of Culture: the DNA of a region edit
- Visualisation and testing of cultural potentials edit
- Empowerment and cultural job-creation edit
- Inspiration edit
- Scottish Highlands edit
- Highlanders World War 2 edit
- Seaford Highlanders edit
- Queen's Own Cameron Highlanders edit
- Gordon Highlanders edit
- Lovat Scouts edit
- Liverpool Scottish edit
- Argyll and Sutherland edit
- Actions edit
- Actions with Content edit
- Highlanders Museum edit
- North Isles Landscape Partnership edit

Create a layer

Create a Map

Edit a Map

100 km
50 mi



cineg

11 407

CHANGE COVER

PUBLISHED 0 DRAFTS 0 GALLERIES 1 STOCK 0 FOLLOWERS 2 FOLLOWS 0 ABOUT



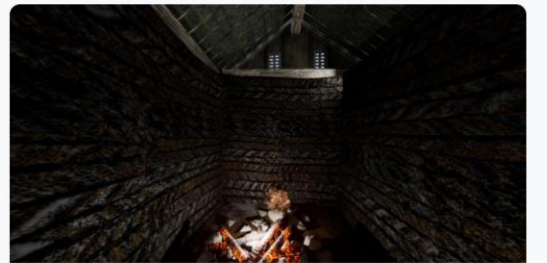
Helmsdale Curing Yard
Helmsdale, UK



Longhouse Farming Settlement
Highland Council, UK




Iron Age Roundhouse
Highland Council, UK



Skriðuklaustur Medieval Augustinian Settlement
Eastern Region, Iceland



- 
- https://en.wikipedia.org/wiki/Unst_Bus_Shelter
 - <http://www.unstbusshelter.shetland.co.uk/p/home.html>
 - http://news.bbc.co.uk/1/hi/scotland/north_east/8239248.stm

Introduction and overview

- Motivation and history
- What is a photosphere
- Anatomy of a tour
- How to make a tour
- **How to share a tour**
- What about video?
- Sources and resources

The screenshot displays the Roundme website interface. At the top, the navigation bar includes 'EXPLORE', 'STOCK', 'WORLD MAP', 'COMMUNITY', 'PRICING', and 'BLOG', along with a 'CREATE TOUR' button. The main header features the 'Open Virtual Worlds' logo and profile information for 'Scotland, UK' with 56 likes and 14396 views. Below the header, a grid of 12 virtual tour cards is visible, each with a thumbnail image, title, location, and engagement metrics. The cards include:

- Virtual St Kilda 1890 (Na h-Eileanan an Iar, UK)
- The Wardlaw Museum - Prenovation (7 The Scores, St Andrews KY16 9AR, UK)
- Perth 1440 - Interpretation Project (South Street, Perth PH2, UK)
- St Andrews Preservation Trust (23 North St, St Andrews KY16 9PW, UK)
- MacAskill Monument Berneray (No Location)
- Tomintoul History (New Technology Centre, North Haugh, St A...)
- Paisley Abbey (Paisley, UK)
- SPACE (No Location)
- Glenshee Archaeology Project Reconstruction (Lair, Blairgowrie PH10 7LP, UK)
- Speyside Trooop (The Square, Tomintoul, Ballindalloch AB37 ...)
- Lords of the Isles - 15th Century Finlaggan (Argyll and Bute, UK)
- Perth Museum and Art Gallery (Perth, UK)

The footer contains 'More Roundme', 'Contact Us', 'Help Center', and 'Roundme Limited 2020' along with social media icons.



Resources

- [Guidance for participation in digital doors open days](#)
- [Virtual Tour Map resource](#)

Equipment and software

- Mobile phone, piece of string or stick
- 360 camera, tripod or monopod
- Camera, clicker, tripod, panoramic head
- Google street view
- Hugin
- Roundme
- CUPIDO



Hugin - Panorama photo stitcher

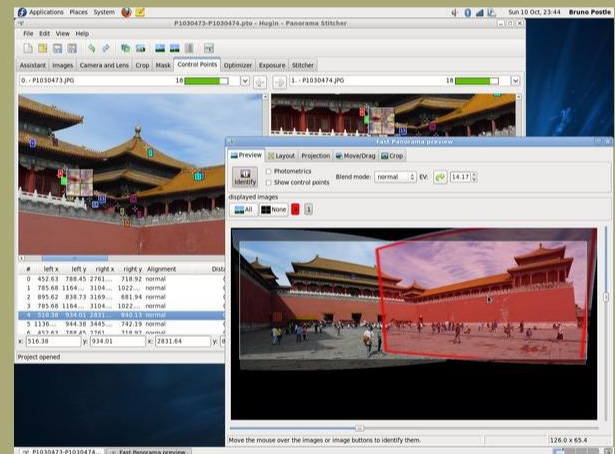


Hugin 2019.2.0 released! 2019-12-30

[Release notes...](#)

Goal: an easy to use cross-platform panoramic imaging toolchain based on [Panorama Tools](#).

With Hugin you can assemble a mosaic of photographs into a complete immersive panorama, stitch any series of overlapping pictures and much more.



<http://hugin.sourceforge.net/>

Status

Hugin has now reached a *stable* state: the software is recommended for general use.

Download locations for stable binaries releases are listed by platform [here](#).

Hugin is in constant development. From time to time somebody is kind enough to publish binaries of development versions.

Hugin has been [localised](#) with Brazilian Portuguese, Bulgarian, Catalan, Chinese Simplified, Chinese Traditional, Czech, Dutch, Danish, English, French, German, Hungarian, Italian, Japanese, Korean, Polish, Russian, Slovakian, Slovenian, Spanish, Swedish and Ukranian translations.

News

Hugin-2019.2.0 released 2019-12-30
Hugin is more than just a panorama stitcher

Hugin-2019.0.0 released 2019-04-06
Hugin is more than just a panorama stitcher

Hugin-2018.0.0 released 2018-02-03