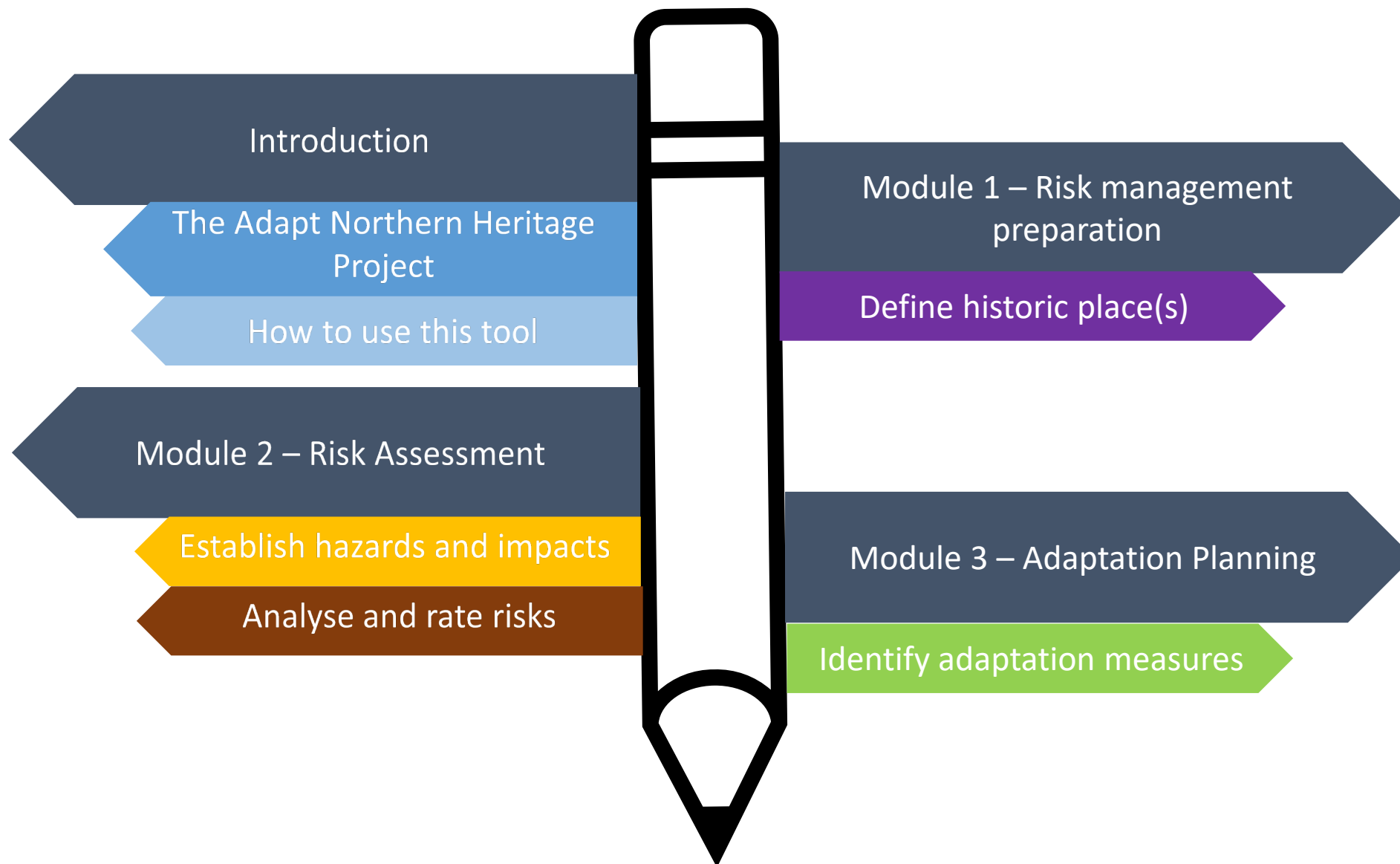




Assessing risks and planning adaptation

*Guidance on managing the impacts of climate change on northern
historic places – Training material*





ADAPT
NORTHERN HERITAGE
TOOLKIT



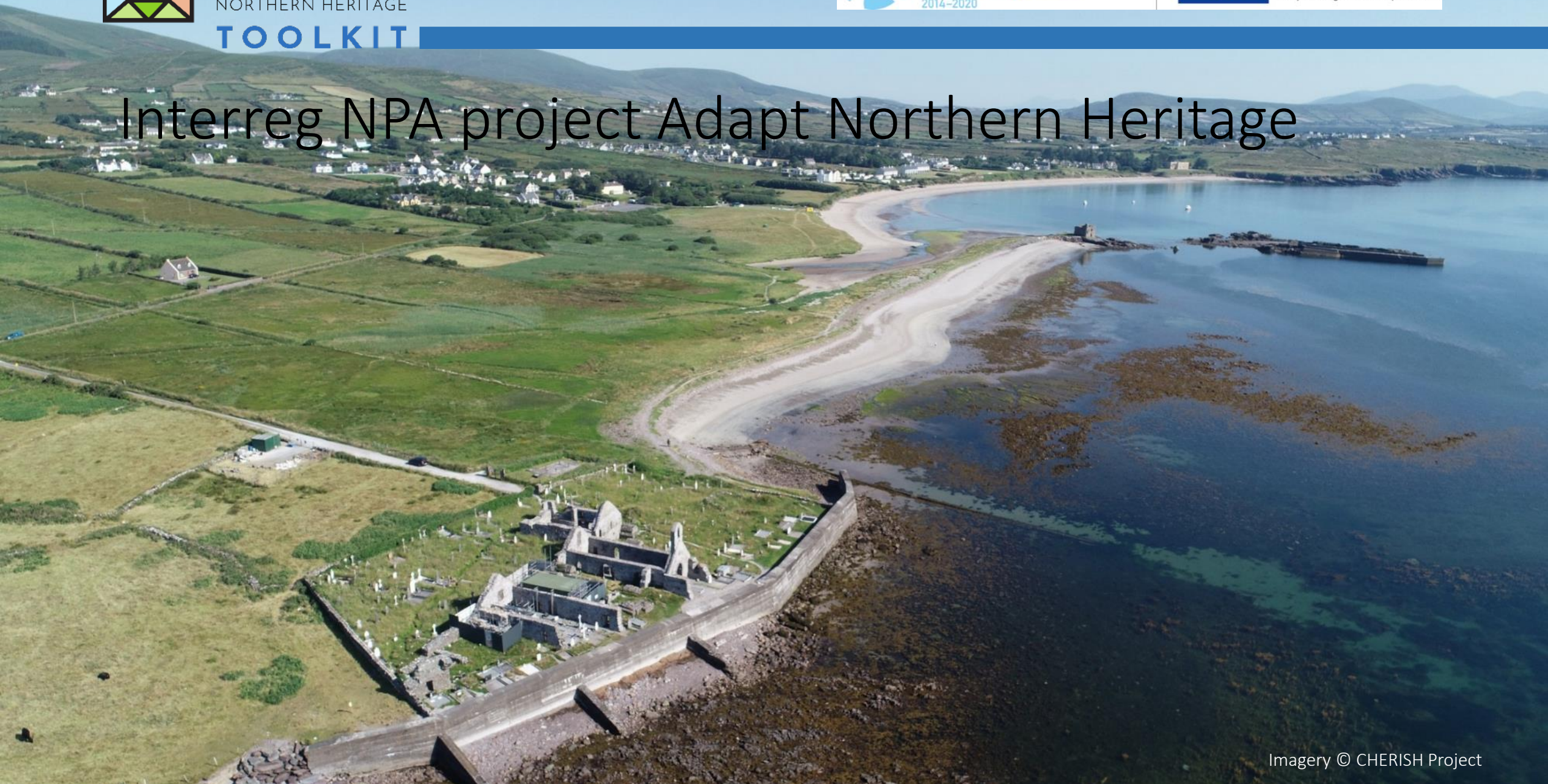
Northern Periphery and
Arctic Programme
2014-2020



EUROPEAN UNION

Investing in your future
European Regional Development Fund

Interreg NPA project Adapt Northern Heritage





Interreg NPA project Adapt Northern Heritage

- Time period: 01 June 2017 to 31 May 2020
- Duration: 36 months
- Budget: 1m €
- funded by the European Union, Iceland and Norway, through the Interreg Programme for the Northern Periphery and Arctic (European Regional Development Fund)
- Priority 4: Protecting, developing and promoting natural and cultural heritage





Adapting Northern cultural heritage to the environmental impacts of climate change and associated natural hazards through community engagement and informed conservation planning



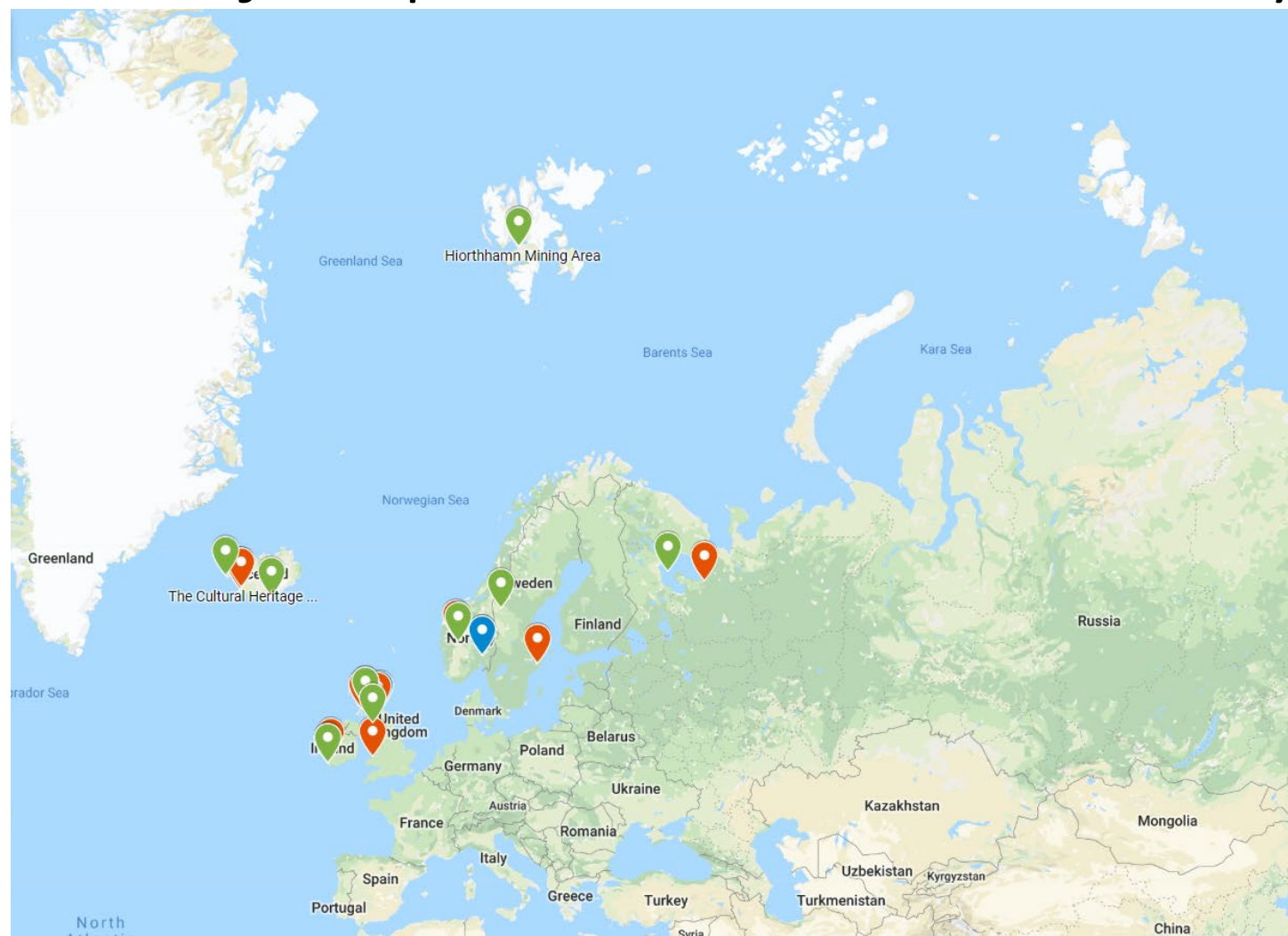


Project outputs

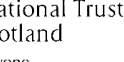
1. **Online assessment and guidance tool** which unites and advances existing assessment methods and combines them with strategic adaptation guidance
2. **Adaptation action plans for the demonstration case studies** to support local stakeholder in developing knowledge that will enable them to take informed decisions about adaptation measures
3. **An international community network with online and real-world activities**, including networking events, training course, round-table discussion, digital database and online forum



Project partners and case study locations



4 project partners and
11 associated partners
from 6 countries





ADAPT

NORTHERN HERITAGE
TOOLKIT



Northern Periphery and
Arctic Programme
2014-2020



EUROPEAN UNION

Investing in your future
European Regional Development Fund

Threave Estate, Castle Douglas, Scotland



Historic Inveraray Town, Scotland



Hiorthhamn, Svalbard, Norway





Solovetsky Monastery WHS, Arkhangelsk, Russia



Bartjan Summer Camp, Jämtland, Sweden



Historic places of Aurland commune, Norway



ADAPT

NORTHERN HERITAGE
TOOLKIT



Northern Periphery and
Arctic Programme
2014–2020



EUROPEAN UNION

Investing in your future
European Regional Development Fund



Ballinskelligs Abbey and Castle, Republic of Ireland



Skaftártunga Landscape, Southern Region,
Iceland



Snæfellsjökull National Park, Western
Region, Iceland

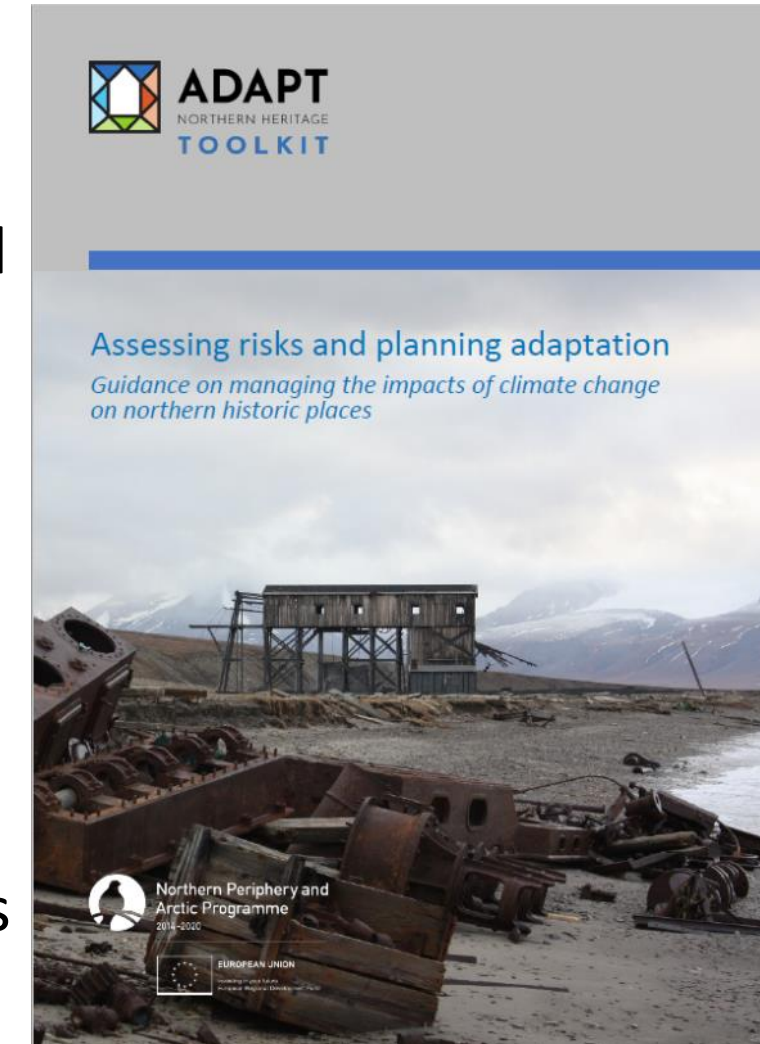
How to use this tool

This tool outlines the risk management process described in the Adapt Northern Heritage project's *Assessing risks and planning adaptation* guide, designed for use with historic places.

The guide's eight steps are grouped into four overarching areas:

Risk management preparation, risk assessment, adaptation planning and adaptation action (excluded from guide)

A training module has been designed for the three areas covered by the guide.

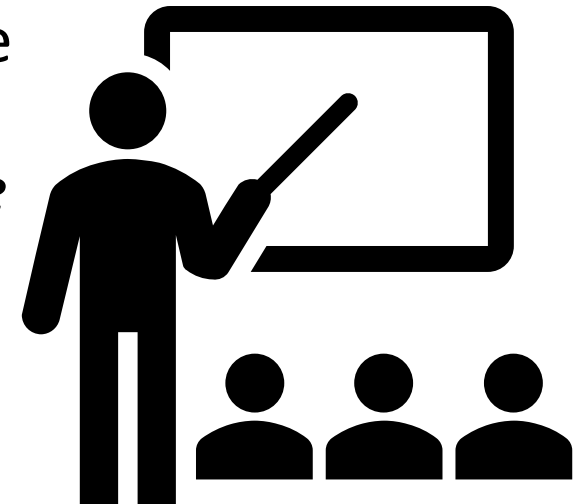


How to use this tool

Each module will introduce a respective guide chapter.

Slides are designed so they can be used, should you decide to run a stakeholder workshop, and include group work suggestions, accompanied by the *Adapt Northern Heritage stakeholder workshop workbook*.

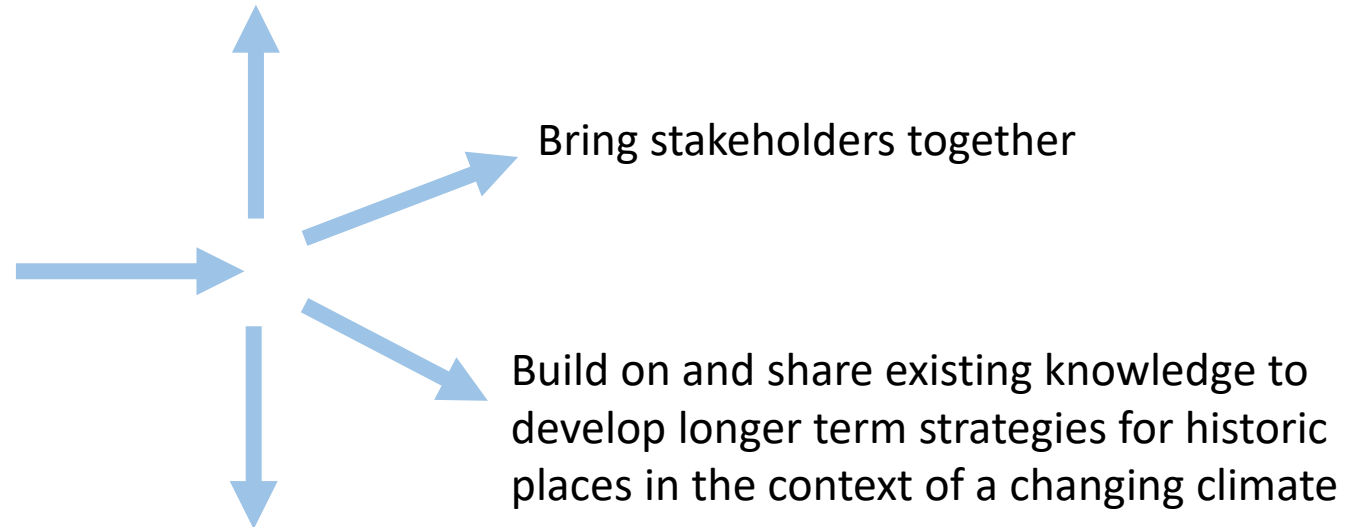
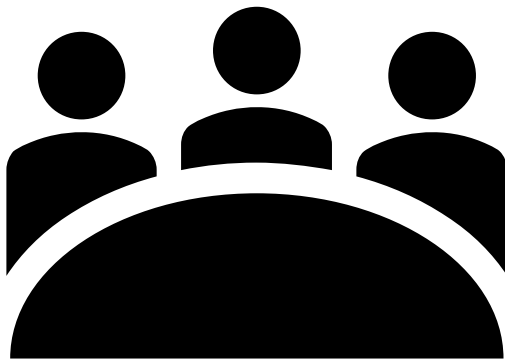
The following slides could serve as introduction for such a stakeholder workshop.





Workshop objectives

Start discussion on climate change with
conservation and planning experts



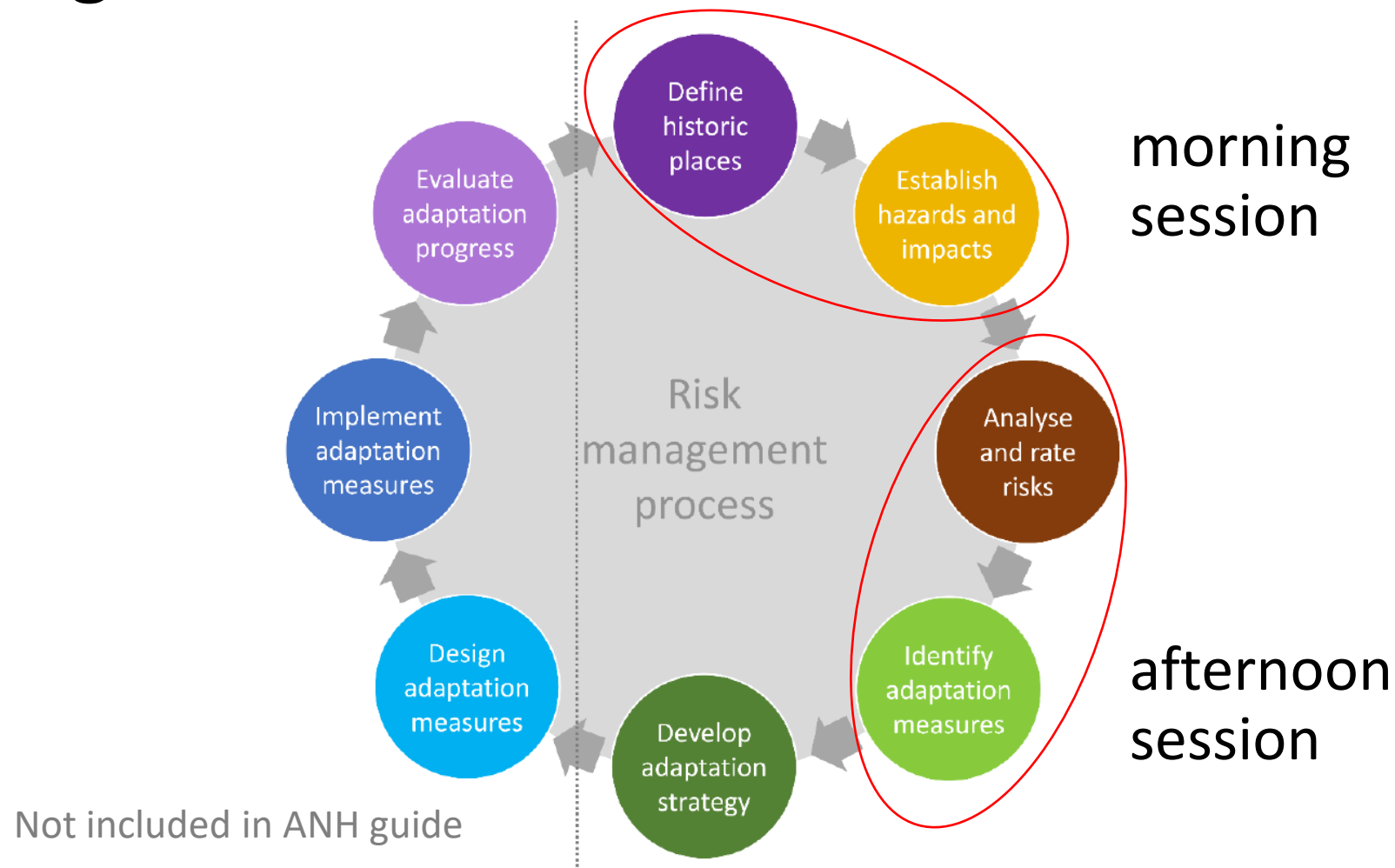
Bring stakeholders together

Build on and share existing knowledge to
develop longer term strategies for historic
places in the context of a changing climate

Discuss climate change, its environmental
impacts on historic places and how
adaptation can help make them more
resilient to these impacts



Risk management process





Risk assessment

Inherent risk rating matrix						
Severity rating	4	0	4	8	12	16
	3	0	3	6	9	12
	2	0	2	4	6	8
	1	0	1	2	3	4
	0	0	0	0	0	0
		0	1	2	3	4
Likelihood rating						

Adaptation planning





ADAPT

NORTHERN HERITAGE



www.adaptnorthernheritage.org



mail@adaptnorthernheritage.eu



AdaptNHeritage



AdaptNHeritage

With support from



**Northern Periphery and
Arctic Programme**

2014–2020



EUROPEAN UNION

Investing in your future
European Regional Development Fund