

(c) AUTHOR

# Pilot Area # 1: Bavarian Forest-Mühlviertel-Šumava DE/AT/CZ

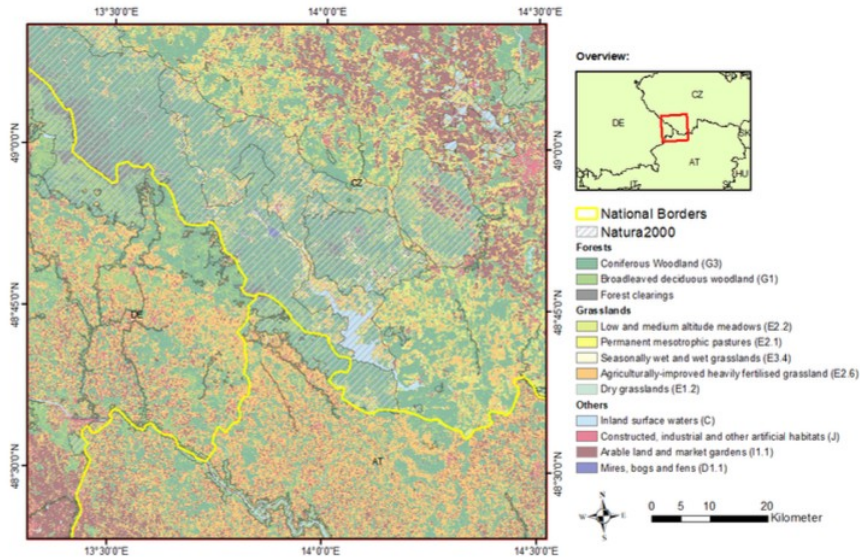


Eva Volfová

Public final conference, We., 10. November 2021



# CHARACTERISTIC & UNIQUENESS OF PILOT AREA



Grassland-dominated areas in Upper Austria (Austria), Bavaria (Germany) and south-western parts of Czech Republic.

The National parks - Šumava and Bavarian Forest / one of the most valuable natural areas in Central Europe, with dominating forest habitats and peat bogs (green roof of Europe)

The Novohradské hory Mountains

Natura 2000: 24 (CZ) + 11 (AT) + 6 (DE) sites

# CHARACTERISTIC & UNIQUENESS OF PILOT AREA



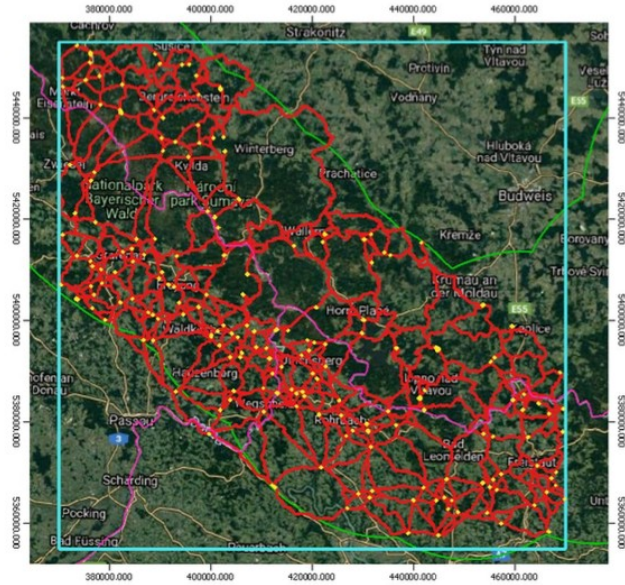
Meadows = main topic for pilot region 1.

Habitat types: 6230 Submontane and montane Nardus grasslands, 6510 Mesic Arrhenatherum meadows, 6520 Montane Trisetum meadows.

Endangered species: birds (eg. *Crex crex* corncrake, *Tetrao tetrix* blackgrouse) and butterflies (*Phengaris teleius*, *Phengaris nausithous*, *Phengaris arion*, *Scolitantides baton*, *Psophus stridulus*, *Colias myrmidone* and others).

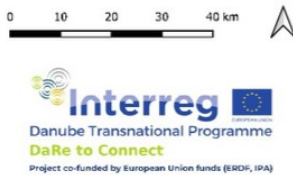


# ACTIVITIES CARRIED OUT & MEASURES IMPLEMENTED



## Legend

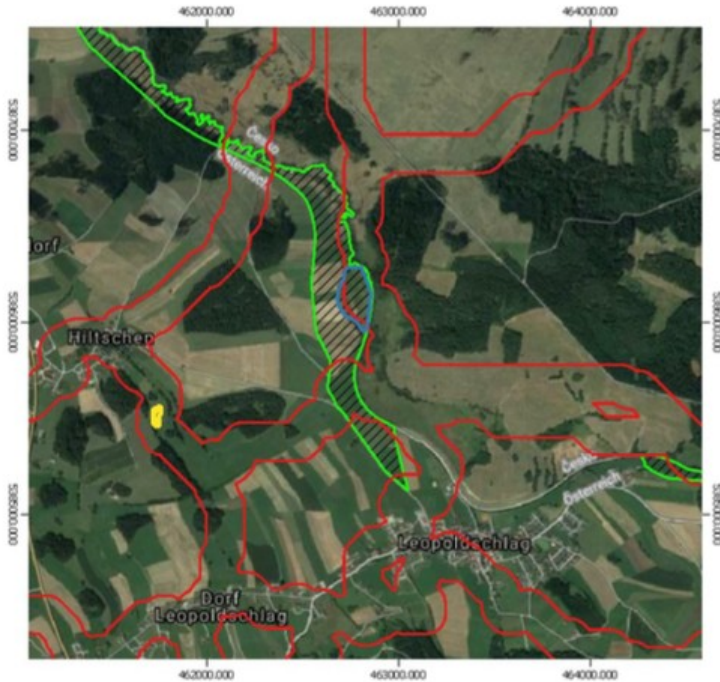
- potential corridors
  - core areas (isolated)
  - national border
  - PR1
  - Green Belt
- Background: Google Hybrid



- Connectivity analysis: Potential migration corridors – based on “Linkage Pathways Tool” (McRae 2006, McRae & Kavanagh 2011, Shah, V.B. 2007) / Selected priority areas
- „Šumava meadows“ working group – analysis and proposals: 1) data collection, 2) limits for land intake, 3) management, 4) strategic approach → Concept of Šumava meadows
- Restoration of meadows – stimulating compilation of Regional strategy of adaptation measure (Pilsen Region)
- Stakeholder meetings – exchange of experience with management



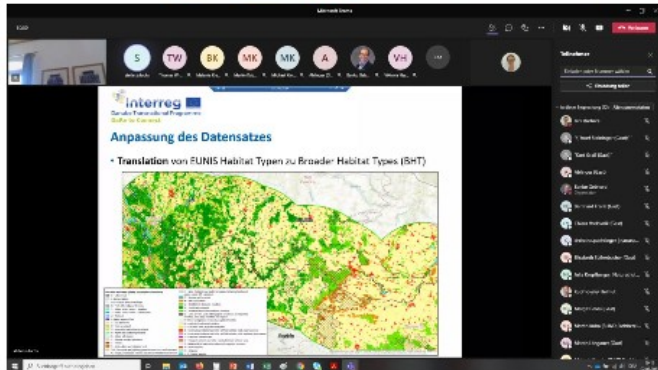
# ACTIVITIES CARRIED OUT & MEASURES IMPLEMENTED



## PRIORITY AREA – EXAMPLE

- The Maltsch – border river between Uper Austria and Czech Republic - Natura 2000.
- This site covers river meander accompanied by wet meadows, fallows and riparian wood. Site of freshwater pearl mussel (*Margaritifera margaritifera*).
- In 2014, local authorities started to manage a small grassland patch in the municipality Leopoldschlag on the Austrian side with water buffaloes (*Bubalus bubalis*) to protect and sustain the ecosystem and its services.
- Suitable corridor to link extensive grassland habitats.

# STAKEHOLDERS INVOLVED



Together aprox. 300 stakeholders in Austrian, Czech and German part of the pilot region 1.

Ministries, National parks, State governments, Regional governments (Niederösterreich, Landkreis Regen, Passau, Plzeň Region, České Budějovice Region), Universities, State agencies, Regional development agencies, Local action groups, Municipalities, Non-governmental organisations (BUND, Naturschutzbund, BirdLife, WWF), Museums, Agricultural company.





# STAKEHOLDERS INVOLVED



# IMPACT OF PROJECT

- Innovative application of data from remote sensing
- European Green Belt as ecological backbone of Europe
- Spatial quantification of connectivity and landscape services
- Ecosystem services - highlighting the numerous benefits for human well-being
- Valid on **different scales**: local/regional/national/transnational
- Connectivity of protected areas and habitats
- Helpful to identify **existing valuable habitats** and less natural **habitats with high potential** as (connecting) habitats

Translation of project results into policy recommendations

Areas of Action: **SAFEGUARD** and **RESTORE**

Policy tools: common agricultural policy and biodiversity strategy

## GIS tool

### Šumava meadows

- Focus on meadows, strategic approach,
- Proposals for management – 48 localities, scout patronage groups (16 localities),
- Limits for land intake





# NEXT STEPS + FOLLOW UP ACTIVITIES

- Cooperation in fulfilling European strategies in national/regional level,
- Strengthening of the connectivity of Green belt,
- Further cross-border cooperation of partners and stakeholders,
- Follow-up Interreg projects – eg. Restore to Connect (management measures),
- Bilateral cooperation on meadows – NP Šumava + NP Bavarian Forest (exchange of experience with management, setting strategy, pilot areas of measures, large herbivores, monitoring)
- Strategy of meadows for SAC Šumava
- The river Maltsch

# CONTACT & INFORMATION

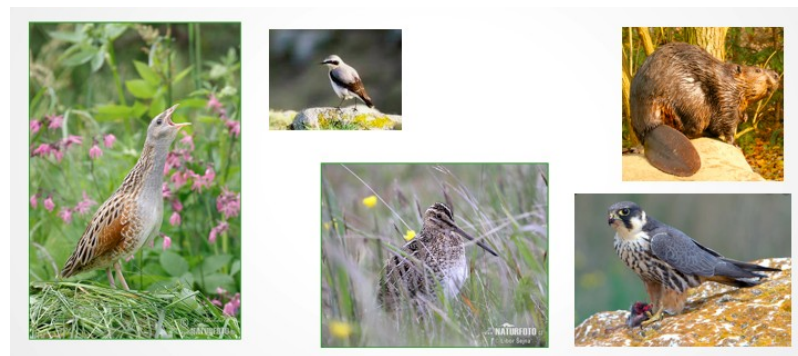
EVA VOLFOVÁ

[volfova@ametyst21.cz](mailto:volfova@ametyst21.cz)

+42-0-605 702 744

AMETYST

[www.ametyst21.cz](http://www.ametyst21.cz)



Dare to Connect: Public Conference  
Online ● 10. November 2021

