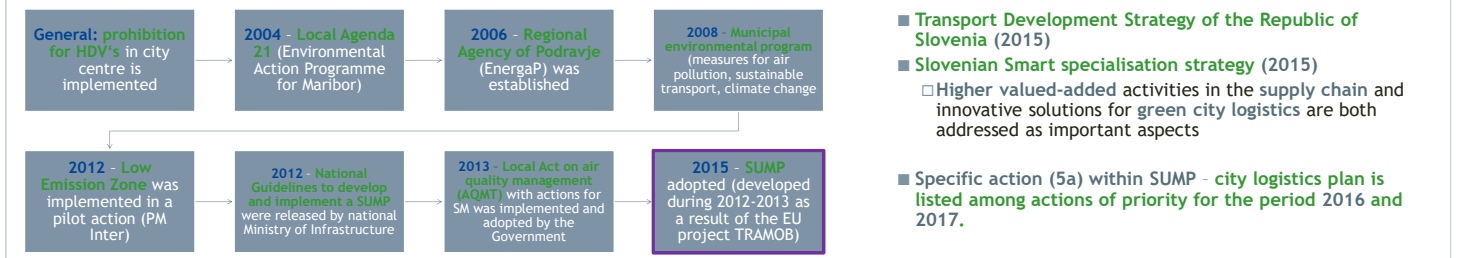
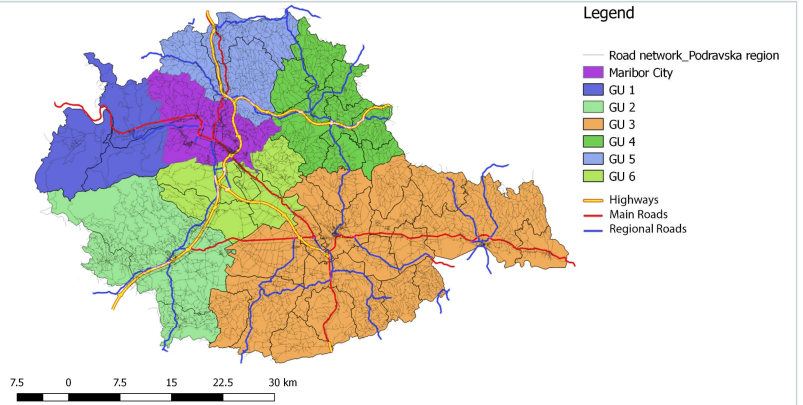


FUA MARIBOR Objectives



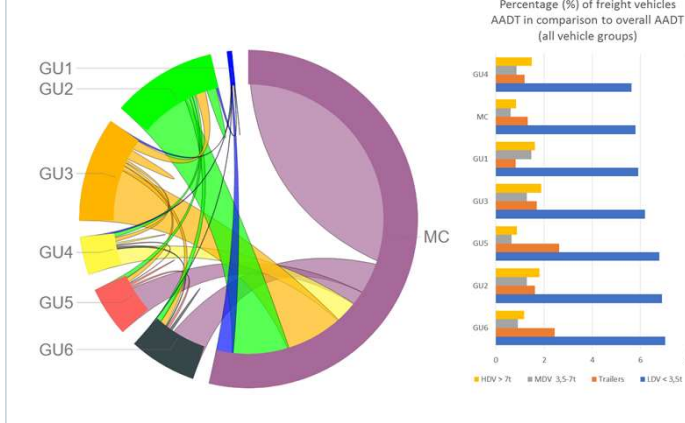
The territorial context FUA Maribor

- 41 municipalities, 679 settlements
- 2.107 km² (10,7% of the Slovenian national territory)
- 323.461 inhabitants (16,1% of the national population)
- 4.100 working units (G and I sector)
- 1.128 employers (foodstuffs and home accessories)
- 7 zones (geographical units), Maribor City is the central zone of the FUA
- Zones defend based on road network and based on major cities located within the region
- Only Maribor and Ptuj with reasonable city centres (all the rest are small villages)



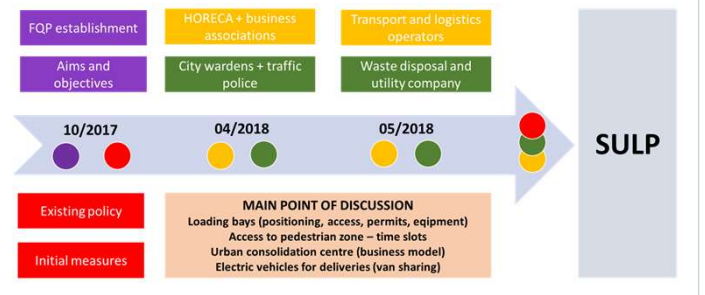
Results generated by the tool application

- Survey including transport operators of 5 of the most important retail chains in the region
- 120 interviews
- 113 traffic counts



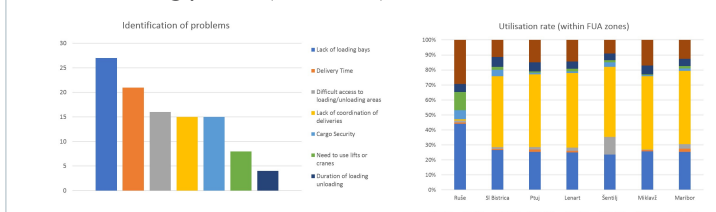
Freight Quality Partnership

- Identification of regional specific problems and needs
- Joint elaboration of measures
- Understanding effects
- Sulp creation, adoption and implementation
- Continued and lasting cooperation



Data interpretation

- Majority of distribution flows with origin and destination within FUA (Maribor zone more than half of all transport trips)
- Low utilisation rate of vehicles (25% empty, only 15% fully loaded vehicles)
- Fragmentation of deliveries, concentration of deliveries in the morning period (6-10 a.m.)



LSI

- **Environment:**
 - Diesel engine vehicles
 - High traffic volumes
- **Policy:**
 - Lack of stakeholders' involvement
 - Information flow problems
 - Data sharing restrictions

