

## Sustainable Gateways

Small ports – sustainable gateways to coastal national parks CB630



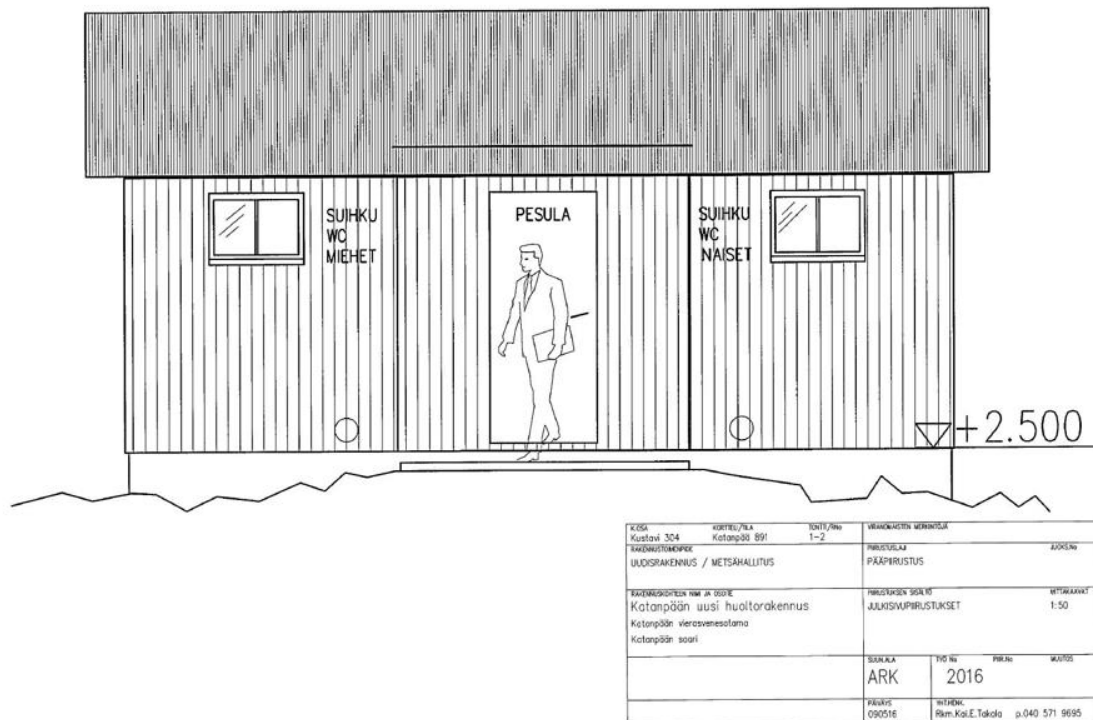
# FINAL REPORT ON INVESTMENT ACTIVITIES ON KATANPÄÄ

## SUSTAINABLE GATEWAYS

# FINAL REPORT ON INVESTMENT ACTIVITIES ON KATANPÄÄ CB630 SUSTAINABLE GATEWAYS PROJECT

## 1. NEW SERVICE BUILDING ON KATANPÄÄ

As an initial step, the planning of electricity, water, and sewage works for the new service building was procured by Metsähallitus, Parks & Wildlife Finland. As a second step, the plans were completed alongside the technical drawings for the building.



Construction drawing of Katanpää service building. Drawing: Metsähallitus / Kai Takala.

The procurement for the construction of the new service building was carried out between March 2019 and August 2019. The construction of the service building started in September 2019 and was completed and ready for use in June 2020.

The building has showers and toilets, a utility space and a dish washing facility for visitors.

An AED defibrillator unit is installed on the wall of the service building.



The location of the new service building on Katanpää at the onset of construction work. Photo: Captain's Table.





The new service building on Katanpää. Photo: Metsähallitus / Sanna-Kaisa Juvonen.



The new service building on Katanpää. Photo: Metsähallitus / Sanna-Kaisa Juvonen.



Toilets and shower in the new service building. Photo: Metsähallitus / Sanna-Kaisa Juvonen.



Shower in the new service building. Photo: Metsähallitus / Sanna-Kaisa Juvonen.



Interior of the new service building. Photo: Metsähallitus / Sanna-Kaisa Juvonen.





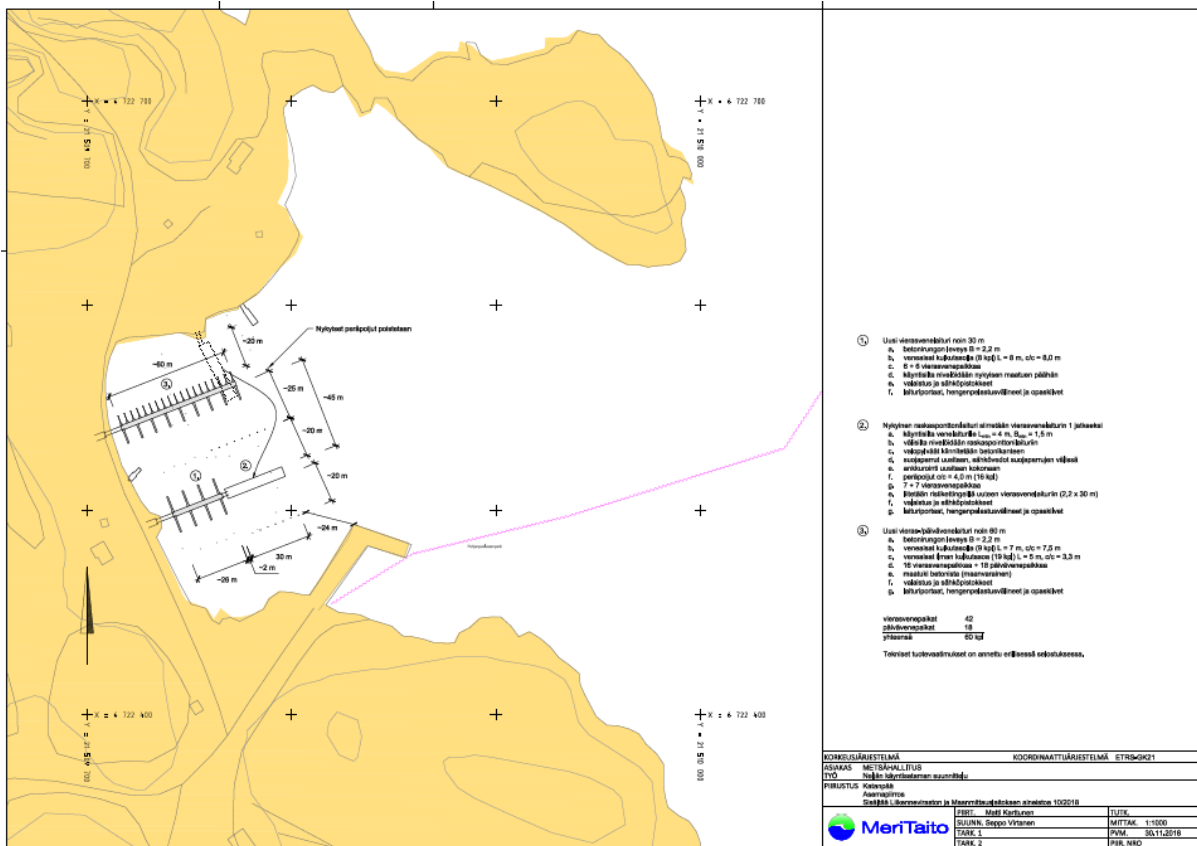
An AED defibrillator unit and a dish washing facility are installed on the outside wall of the service building. Photo: Metsähallitus / Sanna-Kaisa Juvonen.



An AED defibrillator unit is installed on the outside wall of the service building. Photo: Metsähallitus / Sanna-Kaisa Juvonen.

## 2. HARBOUR EXPANSION ON KATANPÄÄ

As an initial step, the procurement was carried out for the planning of the expansion of the harbour by Metsähallitus, Parks & Wildlife Finland. As a follow-up step, the expansion plans were completed for the harbour.



Katanpää harbour site plan. Drawing: Meritaito Oy.

The procurement for the implementation of the harbour expansion plan took place between March 2019 and August 2019. The harbour expansion was implemented in October 2019. The harbour expansion was completed and in use for the summer season of 2020.

One jetty of 48 metres was installed which means that there are now 96 metres of new jetty available. 30 new mooring places for boats were created. The jetty has electricity, lights, and safety equipment.

The increase in new mooring spaces for boats was achieved by the installation of a new jetty and no relocation of existing jetties was necessary.



In addition, repairs to the platform of an older jetty were made, as well as safety checks and repairs to weights and anchoring for both older jetties.



The new jetty on Katanpää. Photo: Metsähallitus / Sanna-Kaisa Juvonen.



The new jetty on Katanpää. Photo: Metsähallitus / Sanna-Kaisa Juvonen.



The new jetty on Katanpää. Photo: Metsähallitus / Sanna-Kaisa Juvonen.



The new jetty on Katanpää. Photo: Metsähallitus / Sanna-Kaisa Juvonen.



### 3. ELECTRICITY WORKS CARRIED OUT ON KATANPÄÄ

Urgent repairs were carried out on Katanpää harbour's electric power supply and that of related buildings to make it fit for the harbour development plans for the new service building and harbour expansion. The repair works to the power supply were carried out by a service provider procured by Metsähallitus, Parks & Wildlife Finland and were based on the official electricity inspection report and the bidding documentation.

The following repairs were conducted on the guest jetty on the northern side of the harbour:

- The cables that feed electricity to the jetty were changed. The cables are subject to mechanical strain from the movement of the waves as well as the build-up of ice during the winter. The cables were repaired so that they are better protected against the mechanical strain caused by wave action and ice.
- The electricity substations were repaired so that they are better able to withstand the wave action that had previously caused problems.

The following repairs were conducted on the kitchen building in the vicinity of the harbour:

- The electricity cables and connectors were in poor condition. Their condition had the potential to become a fire hazard. Also, the cables were not able to handle the electrical load that had to pass through them. The cables and connectors were changed and repaired in order to withstand the current load.
- The building's power supply was in poor condition due to unprofessional and sub-standard installation and was not able to withstand the current load. The installations in the centre were repaired in accordance with the appropriate standards, as were the fuses.

It was also critical to repair the kitchen building as the whole electricity system is connected on the island. The repairs were necessary to prevent any future problems when the new jetty is installed, and the new service building is in function.

## 4. IMPROVEMENTS TO WASTE MANAGEMENT ON KATANPÄÄ

To improve waste management, materials and reserve containers for one dry toilet unit for the use of disabled visitors had been transported to Katanpää for assembly on site. However, the planned site for the dry toilet unit was not suitable for disabled access. For this reason, the unit was not assembled before the end of the season on Katanpää.

A dry toilet unit for the disabled will be assembled on another site in the harbour in 2021. The dry toilet unit will serve the disabled and thus broaden the service base in the harbour and improve the overall service portfolio.

## 5. UPDATED INFORMATION BOARDS ON KATANPÄÄ

The content on the information boards was updated. New information boards were procured, and the updated information boards were installed on Katanpää.

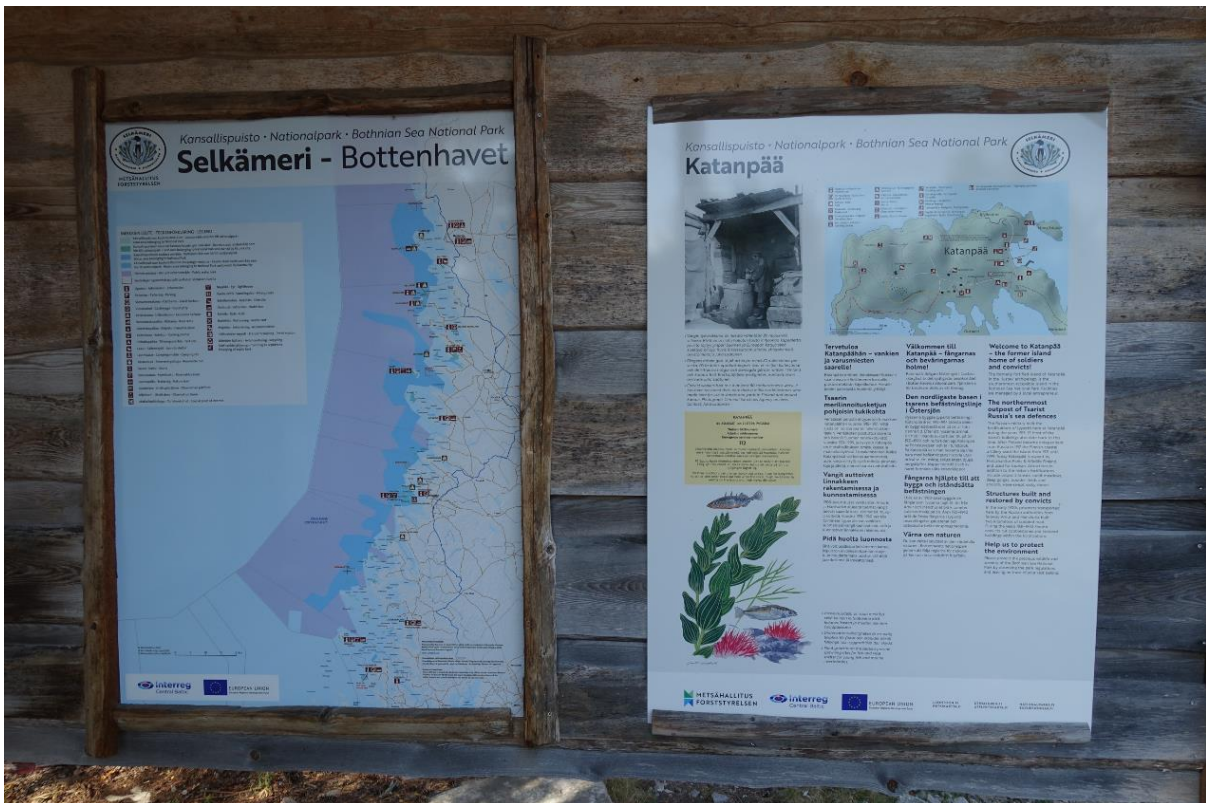


The updated information boards on Katanpää. Photo: Metsähallitus / Sanna-Kaisa Juvonen.



The updated information boards on Katanpää. Photo: Metsähallitus / Sanna-Kaisa Juvonen.





The updated information boards on Katanpää. Photo: Metsähallitus / Sanna-Kaisa Juvonen.



The updated information boards on Katanpää. Photo: Metsähallitus / Sanna-Kaisa Juvonen.