

## Sustainable Gateways

Small ports – sustainable gateways to coastal national parks CB630



Photo: Metsähallitus / Carina Wennström.

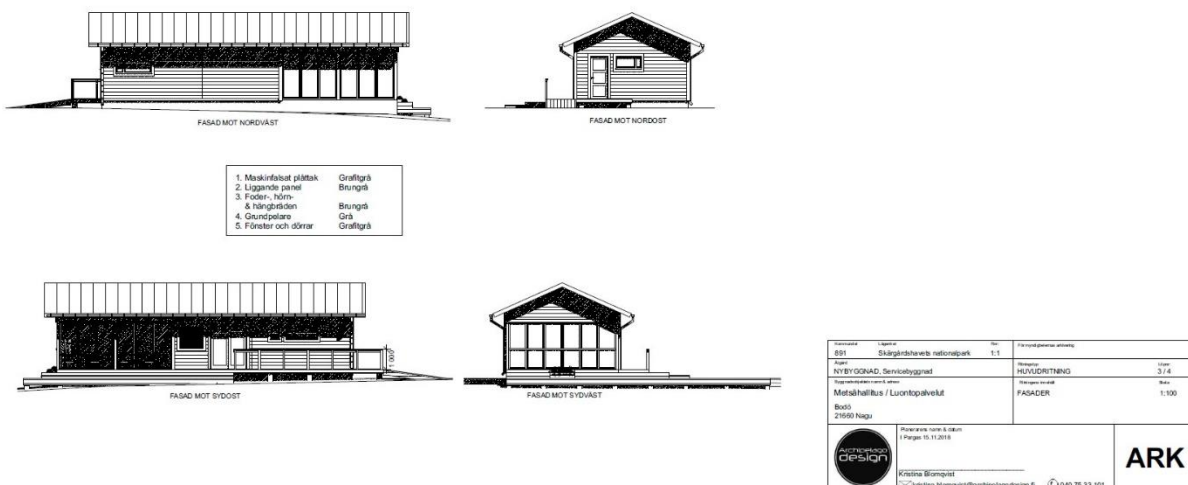
# FINAL REPORT ON INVESTMENT ACTIVITIES ON BODÖ

## SUSTAINABLE GATEWAYS

# FINAL REPORT ON INVESTMENT ACTIVITIES ON BODÖ CB630 SUSTAINABLE GATEWAYS PROJECT

## 1. NEW SERVICE BUILDING ON BODÖ

The first step was the procurement of architectural, technical, and structural plans for the new service building which was carried out by Metsähallitus, Parks & Wildlife Finland. The main contractor applied for the building permit and procured planners for electricity, water, and sewage works for the new service building. The contractor was the same company that had designed the first architectural plans some years back. These plans were never executed but it was decided that the same plans could be used. The company was asked to update the architectural plans along with creating technical and structural plans for the building. It was cost-effective to use the pre-existing plans.



Construction drawing of Bodö service building. Drawing: Archipelago Design Oy/Ab.

The procurement for the construction of the new service building was done in July-August 2019.

The construction of the service building began in October 2019 and it was finished in time for the service building to be available for use in June 2020.

The building has harbour reception facilities, a harbour shop, and a sauna.





The location of the new service building on Bodö at the onset of the construction work. Photo: Metsähallitus / Sanna-Kaisa Juvonen.



The new service building on Bodö. Photo: Metsähallitus / Sanna-Kaisa Juvonen.





The new service building on Bodö. Photo: Metsähallitus / Sanna-Kaisa Juvonen.



The new service building on Bodö. Photo: Metsähallitus / Sanna-Kaisa Juvonen.





Terrace of the new service building. Photo: Metsähallitus / Sanna-Kaisa Juvonen.



Service hatch and entrance from the terrace to the new service building. Photo: Metsähallitus / Sanna-Kaisa Juvonen.



Harbour shop in the service building. Photo: Metsähallitus / Sanna-Kaisa Juvonen.



View from the inside of the service building to the terrace. Photo: Metsähallitus / Sanna-Kaisa Juvonen.





Service facilities in the service building. Photo: Metsähallitus / Sanna-Kaisa Juvonen.



Sauna corridor in the service building. Photo: Metsähallitus / Sanna-Kaisa Juvonen.



Sauna in the service building. Photo: Metsähallitus / Sanna-Kaisa Juvonen.

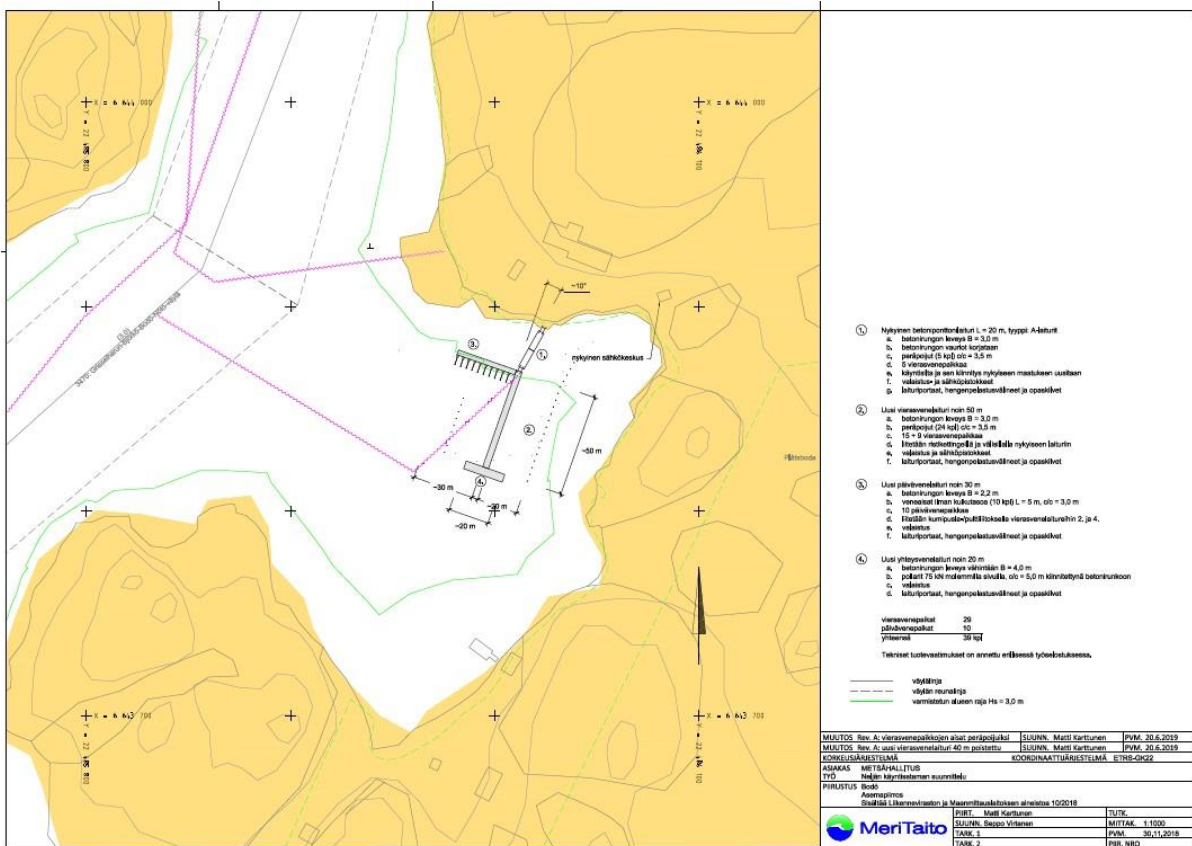


Sauna stove in the sauna of the service building. Photo: Metsähallitus / Sanna-Kaisa Juvonen.



## 2. HARBOUR EXPANSION ON BODÖ

As a first step, the procurement was undertaken for the planning of the expansion of the harbour by Metsähallitus, Parks & Wildlife Finland. As a follow-up step, the expansion plans for the harbour were completed.



Bodö harbour site plan. Drawing: Meritaito Oy.

The procurement for the implementation of the harbour expansion plan took place from March 2019 to September 2019. The harbour expansion was implemented in October 2019. The harbour expansion was completed and was in use during the summer season of 2020.

One jetty of 48 metres was installed which means that there are now 96 metres of new jetty available. This accommodates 30 boats which means that 30 new mooring places for boats were created. The jetty has electricity, lights, and safety equipment.

In addition, seven new buoys with anchors and chains were installed.

Updating of anchors and chains for 15 existing buoys was also carried out.



The new jetty on Bodö. Photo: Metsähallitus / Sanna-Kaisa Juvonen.



The new jetty on Bodö. Photo: Metsähallitus / Sanna-Kaisa Juvonen.





The new jetty on Bodö. Photo: Metsähallitus / Sanna-Kaisa Juvonen.



The new jetty on Bodö. Photo: Metsähallitus / Sanna-Kaisa Juvonen.

### 3. IMPROVEMENTS TO FRESHWATER SUPPLY, WASTEWATER MANAGEMENT, AND SANITATION

An improved supply of fresh water due to a 500-litre buffer expansion was financed by Metsähallitus, Parks & Wildlife Finland.

Waste management improvements focused on ensuring that wastewater from the new service building is treated. The necessary works were conducted to connect the new service building to the existing wastewater treatment system on the island. The existing wastewater system was worked on to treat the wastewater from the new service building. This was financed by Metsähallitus, Parks & Wildlife Finland. No project resources were used for this.

A dry toilet unit was installed on Bodö with reserve containers for the improvement of sanitation.



The new dry toilet unit on Bodö. In the photo, the unit is already closed for winter at the end of the season. The lights installed in the harbour area can be seen in the photo. Photo: Metsähallitus / Sanna-Kaisa Juvonen.





The reserve containers for the new dry toilet unit on Bodö. The lights installed in the harbour area can be seen in the photo. Photo: Metsähallitus / Sanna-Kaisa Juvonen.

## 4. IMPROVEMENTS TO SAFETY MEASURES ON BODÖ

Lights were installed in the harbour area as a safety measure. This was financed by Metsähallitus, Parks & Wildlife Finland.

An AED defibrillator unit was procured and placed in the harbour area.



The AED defibrillator unit on Bodö. Photo: Ninanto Oy.



The AED defibrillator unit on Bodö. Photo: Ninanto Oy.



## 5. NEW INFORMATION BOARDS ON BODÖ

New content for the information boards was created. The new information boards were procured and installed on Bodö.



The new information boards on Bodö. Photo: Metsähallitus / Sanna-Kaisa Juvonen.



The new information boards on Bodö. Photo: Metsähallitus / Carina Wennström.