

Sustainable Gateways

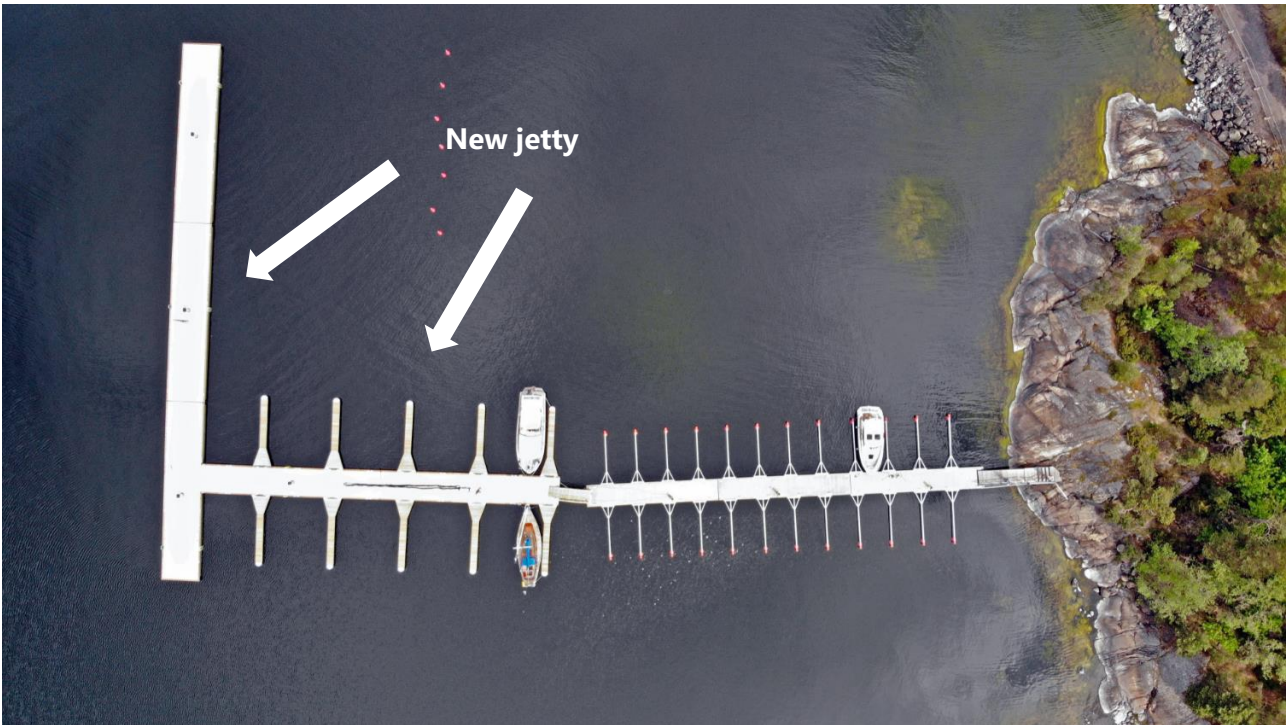
Small ports – sustainable gateways to coastal national parks CB630



Photo: Metsähallitus / Hans-Erik Nyman.

FINAL REPORT ON INVESTMENT ACTIVITIES ON JUSSARÖ

SUSTAINABLE GATEWAYS



The new jetty on Jussarö. Photo: Metsähallitus / Hans-Erik Nyman.



The new jetty on Jussarö. Photo: Metsähallitus / Hans-Erik Nyman.



The new jetty on Jussarö. Photo: Metsähallitus / Sanna-Kaisa Juvonen.



The new jetty on Jussarö. Photo: Metsähallitus / Sanna-Kaisa Juvonen.

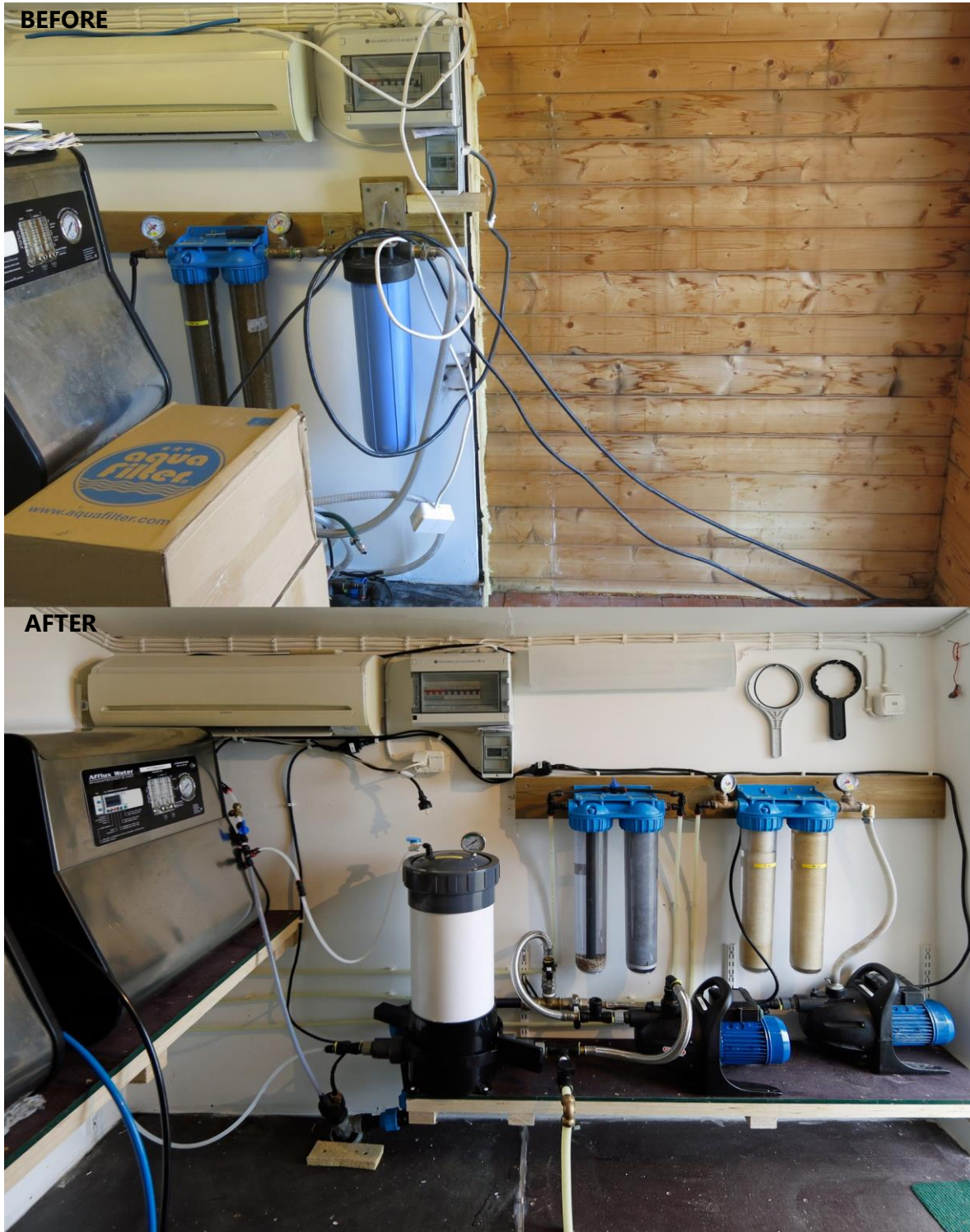
2. IMPROVEMENT TO THE FRESHWATER SUPPLY: NEW REVERSE OSMOSIS MACHINE

The freshwater supply to the harbour on Jussarö relied on an old reverse osmosis machine. The reverse osmosis (RO) machine makes drinking water out of sea water. The machine was outdated and inadequate for present user needs. Therefore, it was decided that it needed to be replaced by a newer version. A sufficient supply of freshwater raises the service level of the harbour and promotes better use of the harbour sauna.

The procurement of the new reverse osmosis machine took place between March 2019 and April 2019. The installation of the new reverse osmosis machine was completed in time for the 2019 season. The building housing the old RO machine was adapted so that both the new and the old RO machines could be housed in the same building. The old RO machine was serviced in order to work as a back-up system.



The reverse osmosis machines on Jussarö. Photo: Metsähallitus / Hans-Erik Nyman.



Top photo: The old reverse osmosis machine on Jussarö. Bottom photo: The reverse osmosis machines after the installation of the new machine. Photos: Metsähallitus / Hans-Erik Nyman.

3. HARBOUR AREA SAFETY FEATURES: AED DEFIBRILLATOR AND SWIMMING JETTY

An AED defibrillator was installed for safety in the harbour area. A swimming jetty for sauna visitors was also installed as a safety feature in the harbour.



An AED defibrillator was installed in the harbour area on Jussarö. Photo: Metsähallitus / Sanna-Kaisa Juvonen.



A swimming jetty was installed for sauna visitors on Jussarö. Photo: Metsähallitus / Hans-Erik Nyman.

4. IMPROVEMENT OF SANITATION

To improve sanitation, two new dry toilet units were installed in Jussarö harbour.



The new dry toilets on Jussarö. In the photo, the dry toilets are closed for the winter at the end of the season. Photo: Metsähallitus / Hans-Erik Nyman.



The new dry toilets on Jussarö. In the photo, the dry toilets are closed for the winter at the end of the season. Photo: Metsähallitus / Hans-Erik Nyman.

5. UPDATED INFORMATION BOARDS

The content of the information boards was updated. New information boards were procured, and the updated information boards were installed on Jussarö.



The updated information boards on Jussarö. Photo: Metsähallitus / Carina Wennström.



The updated information boards on Jussarö. Photo: Metsähallitus / Carina Wennström.



The updated information boards on Jussarö. Photo: Metsähallitus / Sanna-Kaisa Juvonen.

Jussarö

Välkommen till Jussarö

Du har nu kommit till en östergård som generellt kallas av göteborgare för Jussarö och som har varit bebodd under mer än 800 år. Under slutet av 1800-talet så byggdes på Jussarö ett stort antal byggnader som idag är ett av de mest välbevarade landskapen i Sverige. Här har du många efter hästar du många spår av hästerna som levde på Jussarö under förre sekler. I slutet av 1800-talet fanns på ön två fyror med en sammanlagt kapacitet på ca 70 personer. Jussarö var då ett populärt utflykts- och nöjesställe för de som levde i närheten av Ekensås och Jussarö. Under 1900-talet var Jussarö ett populärt utflykts- och nöjesställe för de som levde i närheten av Ekensås och Jussarö. Under 1900-talet var Jussarö ett populärt utflykts- och nöjesställe för de som levde i närheten av Ekensås och Jussarö.

Tervetuloa Jussaröön!

Du oodottu Jussaröön, jossa ihmiset olivat asuneet yli 800 vuoden ajan. Vuosikatoista muutama kymmeniä vuotta sitten ja työssä monille ihmisille. Näkyvinneet jäljet ihmisen toiminnasta ovat 1900-luvulta jäljellä Jussarön kaakkoisosissa löytyi rakennuksia. Rakennusten lukua löydät monia muutamia jättänyt muutama saarella muutama saaresta suutusta innosta. Saarella oli 1800-luvun lopulla kaksi fykötä, jossa oli yhteensä noin 70 asukasta. Jussarö oli luolien suojassa hävettien huolit, ja uusin jättänyt jäljet ihmisen toiminnasta. Saaren läheisyydessä on ollut vuodesta 1909 asti Tammisaaren saariston kansallispuisto, josta saaren luonto sijaitsee luonnollisissa tiloissa. Tämä alueella on säilyttänyt vanha merkitys polulla. Saaren itäosassa on säilyttänyt vanha merkitys polulla. Tämä alueella on säilyttänyt vanha merkitys polulla. Tämä alueella on säilyttänyt vanha merkitys polulla.

Welcome to Jussarö!

You have arrived in a harbor that has been visited by seafarers for more than 800 years. During the past centuries, numerous people have lived and worked on this island. The most clearly visible remains of human activity include the wooden structures from the 19th century which were built from under the sea south of Jussarö. If you take a closer look around you, you'll find many other exciting reminders of life on the island from years gone by. At the end of the 19th century, there were two villages and a total of 70 people living on the island. In those days, Jussarö was also a popular destination for outings and the cruises often ended with refreshments and dancing at the island's assembly grounds. Since 1909 the western side of the island has been part of the Ekensås Archipelago National Park, and in order to protect the nature, visitors are only permitted to hike along the clearly marked trails. On the eastern side of the island, you can move around more freely, but please observe the restrictions and warnings put in place for the island's vulnerable nature and to avoid damage. During the past 50 years, many of the structures existing on the island have been destroyed. Both private entrepreneurs and the Metsähallitus Parks & Wildlife Finland and other authorities are working hard to clear the island of these remains. This is an extensive job that will take years to complete. You can help us by not littering or causing further damage to the buildings and structures. Feel free to walk the nature trail around the island at your own pace and enjoy the unique archeology, or simply relax and take advantage of the services offered by the local entrepreneurs.

Jussarö under 250 år

Jussarö 350 vuoden aikana

Jussarö during 250 years

UTINATUREN FI
UTFLYKTSKARTA FI

LUONTOON FI
RETIKARTTA FI

NATIONALPARKS.FI
EXCURSIONMAP.FI

The updated information boards on Jussarö. Photo: Metsähallitus / Sanna-Kaisa Juvonen.



The updated information boards on Jussarö. Photo: Metsähallitus / Sanna-Kaisa Juvonen.



The updated information boards on Jussarö. Photo: Metsähallitus / Sanna-Kaisa Juvonen.