



# AgroRES

Interreg Europe

## Action Plan



# ARSIAL

Agenzia Regionale per lo Sviluppo  
e l'Innovazione dell'Agricoltura del Lazio



REGIONE  
LAZIO

ARSIAL

AGENZIA REGIONALE PER LO SVILUPPO

E L'INNOVAZIONE DELL'AGRICOLTURA DEL LAZIO

## Part I – General information

**Project: AgroRES - Investing in Renewable Energies for Agriculture**

**Partner organisation: ARSIAL - Regional Agency for the Development and the Innovation of Lazio Agriculture**

**Country: Italy**

**NUTS2 region: Lazio (IT114)**

**Contact persons: Dina Maini – Paolo Collepari**

**Email address [d.maini@arsial.it](mailto:d.maini@arsial.it) – [p.collepari@arsial.it](mailto:p.collepari@arsial.it)**

**Phone number: +0039.0686273485 –+0039.0686273452**



REGIONE  
LAZIO

ARSIAL

AGENZIA REGIONALE PER LO SVILUPPO

E L'INNOVAZIONE DELL'AGRICOLTURA DEL LAZIO

## Part II – Policy context

The Action Plan aims to impact:  Investment for Growth and Jobs programme  
 European Territorial Cooperation programme  
 Other regional development policy instrument

### 2.1 Arsial's role as facilitator

Arsial is an agency of the Lazio Region that deals with development and innovation in agriculture in Lazio.

Among the many institutional tasks it performs, it also has the task of supporting the development of an eco-sustainable agriculture involving choices linked to the circular economy and the development of renewable energies.

Arsial also has close links with a number of bodies and communities in the rural area, recognised at regional level, with distinct governance and aims, but all united in the aim of building environmentally friendly development of the territory.

Arsial, with this intermediate position between territorial and local communities and regional institutional bodies, can be the ideal facilitator for the use of Policy instruments for the creation of Energy Communities.

### 2.2 Policy instruments addressed: Regional law n. 1/2020

This action plan may have impacts on three Policy Instruments: the ERDF, the PNRR and regional Lazio law n. 1/2020 establishing the Energy Communities connected to the budget 2021 providing financial support (€ 1,8 M). As a matter of fact, all three of these PIs have among their aims the promotion and support to Energy Communities, although with different characteristics. However, we will focus on the Policy Instrument that seems closest to the objectives we have set ourselves with this action plan, namely to support rural communities that want to evolve into Energy Communities. That is, **regional law 1/2020**, which established the Energy Communities in Lazio, together with the 2021 budget amendment, which established the incentives for them.



REGIONE  
LAZIO

ARSIAL

AGENZIA REGIONALE PER LO SVILUPPO

E L'INNOVAZIONE DELL'AGRICOLTURA DEL LAZIO

This measure extends the instruments provided for in the PNRR, dedicated to municipalities with fewer than 5,000 inhabitants, by using other criteria for selecting beneficiary communities. Namely:

- a. presence of low-income households;
- b. number of subjects involved;
- c. presence of storage systems;
- d. inclusion of electric mobility and low-enthalpy geothermal systems;
- e. extent of new production of renewable electricity and consumption of electricity by members of self-consumption groups or the renewable energy community;
- f. multiple electricity producers;
- g. estimated share of self-consumption at the time of application;
- h. use of ICT technology for efficient energy management;
- i. possibility of aggregation of members to facilitate national grid balancing services.

The possibility of influencing this policy Instrument is significant and concrete since the way in which the funds will be disbursed has not yet been established, and the experience derived from AgroRES and its action plan can really constitute benefit for regional programming.

### **2.3 Main stakeholders involved: Lazio Region - Infrastructure And Mobility Directorate - Energy Sustainability Area**

In addition to Arisial, the action will be implemented thanks to the cooperation of different structures of the Lazio Region, which have been involved in various ways in some of the project's local meetings.

The structures belong to Agriculture Department has important related competences which are providing for the implementation of agri-environmental policies, organic farming, environmentally friendly agriculture and renewable energy in the agricultural sector and rural infrastructure. Surely, this Department will help Arisial to publicise and promote the helpdesk service it intends to implement through this action.

But the regional structure that will be most involved in the impact this action will have at regional level and at policy instrument level is the Infrastructure And Mobility Directorate and in particular the Energy Sustainability Area. This is the declaration of its competences related to the action plan we are proposing.

*In coordination with the other competent regional structures, it provides for the elaboration, updating and implementation of the Regional Energy Plan (PER) and of the*



*programmes and projects connected to it, according to the regional competence. It manages regional programmes and interventions, financed by EU, national and regional funds (in coordination with the Managing Authorities), aimed at developing the rational use of energy, energy saving, the use of renewable energy sources and the construction of district heating plants and networks, in coordination with the regional and national structures concerned. It supports the "Coordination and monitoring of investments in infrastructures, energy and mobility area" on the activities aimed at the use of structural funds assigned to the energy sectors, with particular reference to programmes co-financed with SIE funds (ERDF, EAFRD and ESF) and in the drafting of documents for the activities following the granting of Community and national funding. On behalf of the Director, it carries out the guidance activities related to the Kyoto Desk and the various activities of Lazio Innova spa aimed at supporting public and private operators for the implementation of sustainable energy projects. It provides for the issuance of acts relating to the construction and operation of power lines of the National Transmission Grid (NTG) and related works, authorisations for the construction and operation of methane, gas pipelines and/or variations of networks for the transport of electricity, methane, gas and hydrogen. It oversees the activities falling within the regional jurisdiction in the field of geothermal energy (as provided for by Legislative Decree no. 22 of 11 February 2010), also through the drafting of proposals for regional laws and regulations. It ensures the implementation of **regional laws** no. 7 of 2018, no. 16 of 2011 and **no. 1 of 2020** for the subjects of management and operation of thermal plants, energy performance certificates, forest biomass register and **energy communities**, respectively.*

With this Action Plan we want to encourage and promote the type of change number 2 as we want the funds of the regional law to be optimised through procedures that are as simplified as possible and oriented towards the realities of the rural and territorial communities targeted by this action plan.



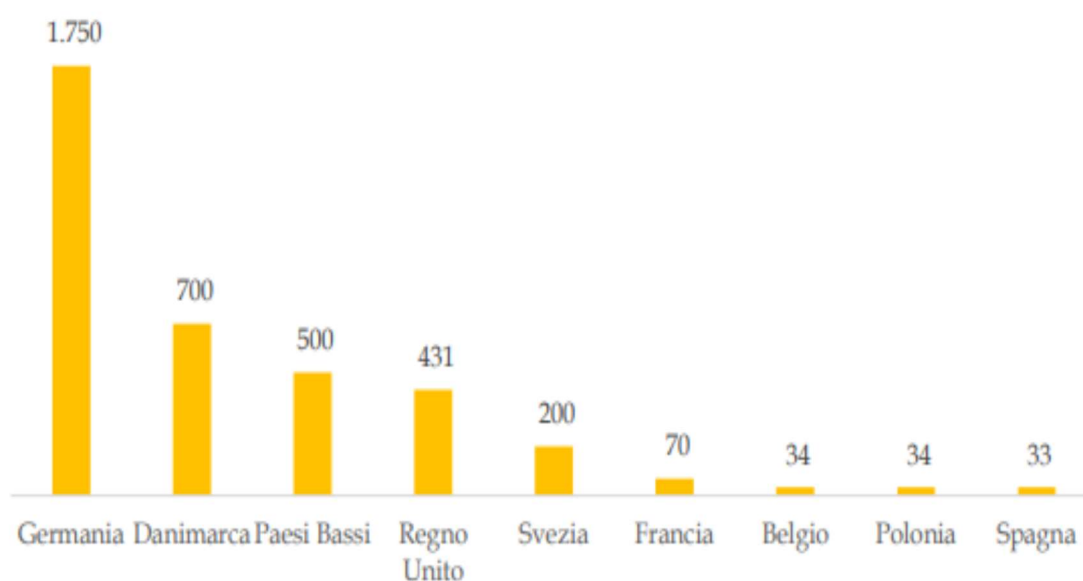
## Part III – Details of the actions envisaged

### ACTION

THE ACTION AIMS TO SUPPORT THE ESTABLISHMENT OF NEW ENERGY COMMUNITIES THROUGH AN HELPDESK SET UP TO PROVIDE TECHNICAL, FINANCIAL AND ADMINISTRATIVE ASSISTANCE SERVICES TO RURAL COMMUNITIES IN THE LAZIO REGION.

#### 3.1. Relevance to the project

Already at the time of the drafting of our self-assessment, comparing it with that of our partners, we realised on the one hand that some of the data on the presence of renewable energies in the area were insufficient or partial, and on the other hand that there was a total lack of energy communities in our region. Looking at European statistics (fig. X), we decided to focus the efforts of our action plan on this last critical issue.



Source: Caramizaru, A. and Uihlein, A., Energy communities: an overview of energy and social innovation.

*Fig.1*

In particular, two good practices of the project partners have been an inspiration to us:



REGIONE  
LAZIO

ARSIAL

AGENZIA REGIONALE PER LO SVILUPPO

E L'INNOVAZIONE DELL'AGRICOLTURA DEL LAZIO

1. Community-owned Energy - Devon County Council.
2. Better Energy Communities - SLIGO - Department of Communications, Climate Action & Environment (DCCA) Sustainable Energy Authority of Ireland (SEAI)
3. These good practices, in fact, succeeded in expressing at best the facilitating role of the partners involved, who managed to support the target communities in a significant way, achieving relevant results.

An interesting helpdesk development that we would like to partially replicate is that of the Policy Helpdesk of the Policy Learning Platform of the Interreg Programme.

Since Arisial's mission concerns the development of agriculture and rural areas, we have decided to target as a priority all those agricultural and rural realities that already have organised governance. Most of these communities are made up of local public bodies (municipalities) and small and medium-sized agricultural, industrial and craft enterprises, but also third sector bodies which, although they have different aims, have in common the aim of promoting eco-sustainable development of the territory (see point 3.3 of this section for details). This common characteristic makes these communities very sensitive to the environmental issue, which is, moreover, widely supported by European, national and regional funds allocated for the development of RES. The recent war contingency has made this inclination an urgent necessity where the possibility of energy autonomy seems to be the only answer to the enormous increase in the price of energy sources.

### 3.2 Nature of the action

The action aims to provide a technical, financial and administrative assistance service to the rural communities of Lazio through a helpdesk set up by Arisial with the aim of creating new energy communities.

Some actions are preparatory to the helpdesk service. Therefore, the action plan is divided into the following sub-actions:

1. Digital implementation of a help desk containing separate sections (administrative-technical-financial);
2. Identification and designation of a pool of experts able to respond to the needs of the constituent Energy Communities through the AgroRES Help Desk;
3. Information and meetings in presence or through webinars to make known the new form of support represented by the AgroRES Help Desk;



4. Providing the actual support service through the AgroRES Help Desk
5. Monitoring of the results of the support action in relation to the setting up of new Energy Communities aimed at optimising the funds provided by the regional law 1/2020. As indicators we will use the number of stakeholders involved (minimum 300), the number of support requests received at the help desk (minimum 30), the number of proposals we will make to the regional administration to adjust the policy instrument (minimum 3), the number of new Energy Communities that will be initiated during the year (minimum 3).

### 3.3 Stakeholders involved

The stakeholders involved in the implementation of the help desk service and in the evaluation of the results of the action plan are those indicated in the point 2.3.

Everyone will be able to use the AgroRES help desk, but our target audience is the rural communities already present in the region and formally recognised as:

- **BIODISTRICTS**

*Lazio regional law no. 11/2019 defines biodistricts as having among their aims "to apply the concepts of economic, environmental and energy eco-sustainability to the supply chain, with a view to the rational use of energy and renewable energy sources".*

There are seven of them, namely

1. BIO-DISTRICT VALLE DI COMINO n. 19 municipalities, Population: 24,709 inhabitants - Area: 585.05 Km<sup>2</sup> - Population density: 42.23 inhabitants per Km<sup>2</sup>
2. BIO-DISTRICT COLLINE DELL'AMASENO: n.11 communes, Population: 45.661 inhabitants - Area: 475,39 Km<sup>2</sup> - Population density: 96,05 inhabitants per Km<sup>2</sup>
3. BIO-DISTRICT ETRUSCO ROMANO: n.2 communes, Population: 117.499 inhabitants - Area: 348,21 Km<sup>2</sup> - Population density: 337,44 inhabitants per Km<sup>2</sup>
4. BIO-DISTRICT VIA AMERINA E DELLE FORRE: n.13 Municipalities, Population: 67.061 inhabitants - Area: 485,50 Km<sup>2</sup> - Population density: 138,13 inhabitants per Km<sup>2</sup>
5. BIO-DISTRICT MAREMMA ETRUSCA E MONTI DELLA TOLFA: n.4 municipalities, Population: 26.726 inhabitants - Area: 625,91 Km<sup>2</sup> - Population density: 42,70 inhabitants per Km<sup>2</sup>





6. BIO-DISTRICT LAGO DI BOLSENA: n.17 communes, Population: 52.771 inhabitants - Area: 1.006,62 Km<sup>2</sup> - Population density: 52,42 inhabitants per Km<sup>2</sup>
7. BIO-DISTRICT CASTELLI ROMANI: n.6 communes, Population: 118.062 inhabitants - Area: 117,47 Km<sup>2</sup> - Population density: 1.005,04 inhabitants per Km<sup>2</sup>

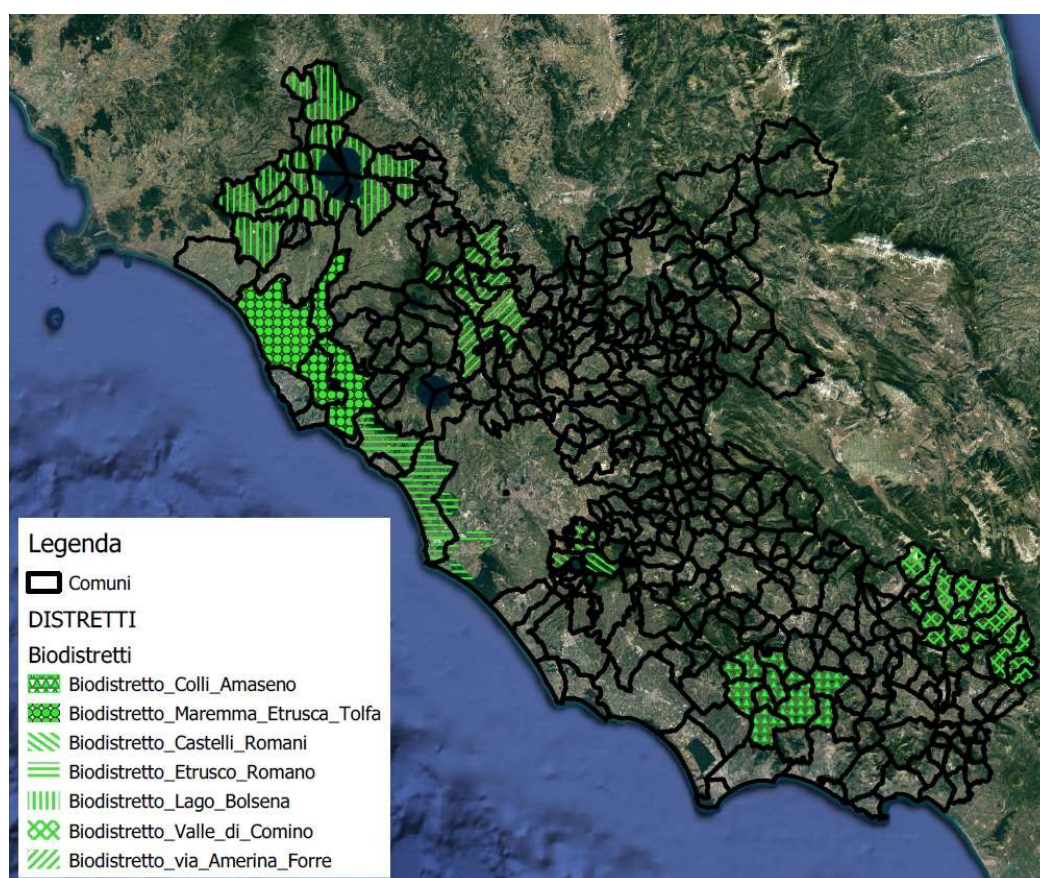


Fig. 2

- **ASSOCIATION OF SMALL MUNICIPALITIES**

*Its aim is, among other things, to promote the economic and social development and competitiveness of small municipalities also through agreements, collaborations and partnerships with other local public and private actors.*

There are more than 250 small municipalities in Lazio. Some of them are very active in the field of renewable energy, such as Ventotene, the first and only energy community in the region.

- **INLAND AREAS**

The Inland Areas (IA) represent a large part of the region, which, in spite of a high availability of cultural and environmental resources, is characterised by an ageing and declining population, and difficult living conditions for the citizens living there.

With the Deliberation of the Regional Council of Lazio no. 477 of 17 July 2014, four distinct areas were identified:

1. Alta Tuscia Ancient city of Castro (AI1)  
Population 53,607 inhabitants - Area: 1244 Km<sup>2</sup> - Population density: 43,10 inhabitants per Km<sup>2</sup>
2. Monti Reatini (AI2)  
Population 34851 inhabitants - Area: 1623 Km<sup>2</sup> - Population density: 21,5 inhabitants per Km<sup>2</sup>
3. Simbruini Mountains (AI3)  
Population 26901 inhabitants - Area: 547 Km<sup>2</sup> - Population density: 49,2 inhabitants per Km<sup>2</sup>
4. Comino Valley (AI4)  
Population 2,882 inhabitants - Area: 571 Km<sup>2</sup> - Population density: 50.5 inhabitants per Km<sup>2</sup>

- **FOOD AND BIODIVERSITY COMMUNITIES**

The "Food and Biodiversity Communities of agricultural and food interest" are territorial realities, established to promote the protection of native biodiversity and agricultural traditions.



REGIONE  
LAZIO

ARSIAL

AGENZIA REGIONALE PER LO SVILUPPO

E L'INNOVAZIONE DELL'AGRICOLTURA DEL LAZIO

Law 194 of 1 December 2015 defines the characteristics of a "community" and the objectives it can set itself in the course of its activity. These include the study and transmission of knowledge on indigenous genetic resources, the launch of short supply chains, and the dissemination of low environmental impact farming systems

- **LAGS/FLAGS**

The European Union, supports the implementation of participatory local development strategies in order to support

- local development strategies through the involvement and active participation of the local public and private partnership;
- the integrated territorial planning and the multi-sectoral integration of the interventions and the networking of local partnerships through the activation of synergies.

In Lazio, there are 6 LAG:

1. LOCAL ACTION GROUP OF THE MONTE PRENESTINI AND VALLE DEL GIOVENZANO.
2. LOCAL ACTION GROUP CASTELLI ROMANI AND MONTI PRENESTINI.
3. LOCAL ACTION GROUP ERNICI SIMBRUINI.
4. LOCAL ACTION GROUP IN TEVERINA.
5. LOCAL ACTION GROUP ETRUSCO CIMINO.
6. LOCAL ACTION GROUP AURUNCI AND VALLE DEI SANTI.



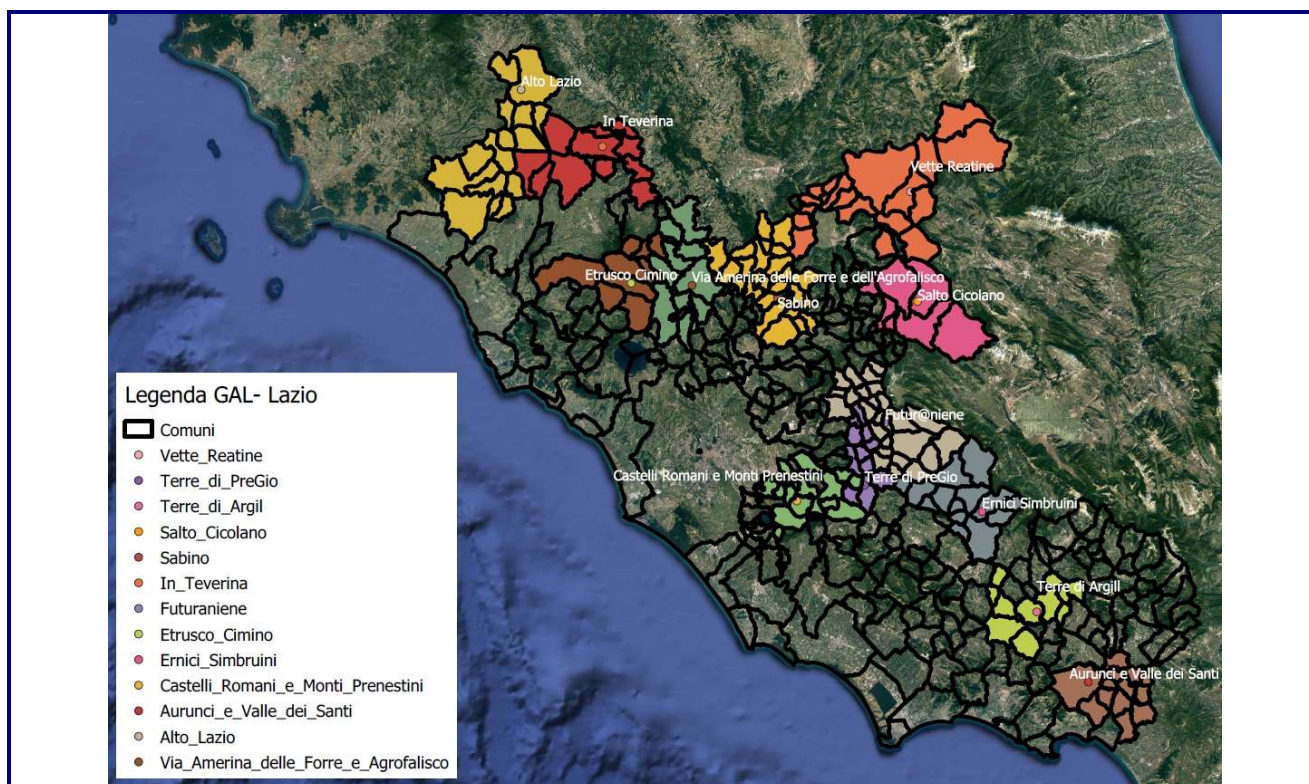


Fig. 3

## And 2 FLAG

1. LAZIO MARE CENTRO
2. LAZIO NORD

### • SUPPLY CHAIN AGREEMENTS

Supply chain agreements are one of the main support tools for agro-industrial policies. In fact, the Supply Chain Agreement aims to encourage the reorganisation of relations between the different players in the supply chain, also in the light of the reconversion taking place in the various sectors, in order to promote collaboration and integration between the players in the supply chain, stimulate the creation of better market relations and guarantee, as a priority, positive effects on agricultural production.



REGIONE  
LAZIO

ARSIAL

AGENZIA REGIONALE PER LO SVILUPPO

E L'INNOVAZIONE DELL'AGRICOLTURA DEL LAZIO

- **RIVER, COASTAL AND LAKE AGREEMENTS**

For River Contracts, including Lake, Coastal and Mouth Contracts, we mean those forms of voluntary agreement that foresee a wide mobilization of the local actors of a territory in order to identify a shared Action Programme, aimed at facing the environmental problems of a river basin, according to an integrated and multidisciplinary logic. In this context, the River Contracts assume the value of a "process plan" resulting from an agreement between decision-making subjects who define in a consensual and cooperative way, the plan for planning, i.e. the Action Programme for the sustainable management of a river basin, committing themselves to respect it.

The River, Lake, Coast, Mouth Contracts signed are:

- Tiber River Contract from Castel Giubileo to the mouth,
- Medium Tiber Valley River Contract, Aniene River Contract,
- Agro Pontino Coastal Contract,
- Ufente River Contract,
- Garigliano River Coastal and Mouth Contract,
- Riviera di Ulisse Coastal Contract
- Paglia River Contract.



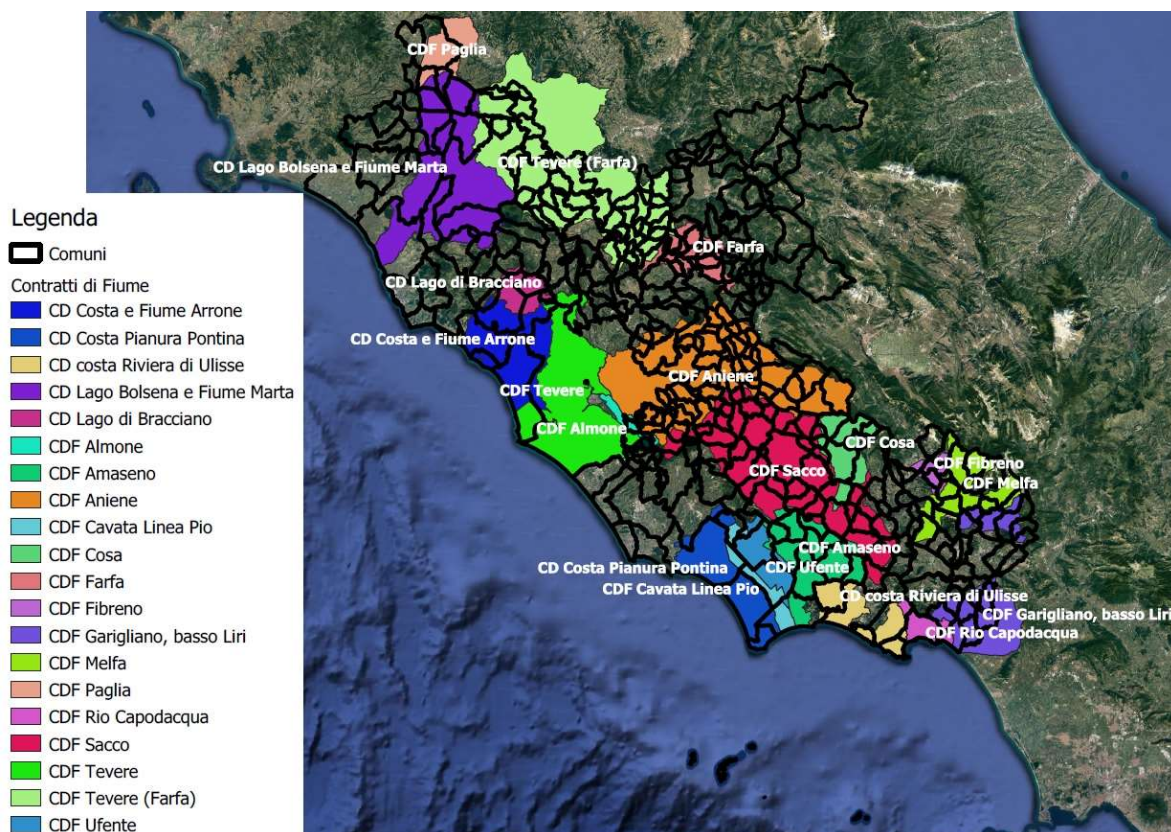


Fig. 4

**OTHER ASSOCIATIONS OR CITIZENS WHO CAN GROW WITH ACTIVE CITIZENSHIP THROUGH PARTICIPATION IN AN ENERGY COMMUNITY**



REGIONE  
LAZIO

ARSIAL

AGENZIA REGIONALE PER LO SVILUPPO

E L'INNOVAZIONE DELL'AGRICOLTURA DEL LAZIO

### 3.4 Timeframe

The action plan will last 1 year and will have the following timetable

Sub Actions	2022						2023					
	July	August	September	October	November	December	January	February	March	April	May	June
1. Digital implementation of a help desk containing separate sections (administrative-technical-financial);												
2. Identification and designation of a pool of experts able to respond to the needs of the constituent Energy Communities through the AgroRES Help Desk;												
3. Information and meetings in presence or through webinars to make known the new form of support represented by the AgroRES Help Desk;												
4. Providing the actual support service through the AgroRES Help Desk												
5. Monitoring of the results of the support action in relation to the setting up of new Energy Communities aimed at optimising the funds												

### 3.5 Costs

The action will cost € 25.000,00 distributed as follows:

DESCRIPTION	EURO €
Digital implementation of a help desk containing separate sections (administrative-technical-financial)	5000
Identification and designation of a pool of experts able to respond to the needs of the constituent Energy Communities through the AgroRES Help Desk	–
Information and meetings in presence or through webinars to make known the new form of support represented by the AgroRES Help Desk	–
Providing the actual support service through the AgroRES Help Desk	15000
<b>Monitoring</b> of the results of the support action in relation to the setting up of new Energy Communities aimed at optimising the funds provided by the regional law 1/2020	5000
<b>Total</b>	<b>25000</b>



### 3.6 Funding sources

The costs of the action will be sustained by ArsiAl.

Date: 25/05/2022

Name of the organisations : ARSIAL

President Mario CIARLA

Signatures of the relevant organisations:

\_\_\_\_\_

Regione Lazio – Direzione Regionale  
Infrastrutture e Mobilità

Direttore regionale Stefano FERMANTE

\_\_\_\_\_



REGIONE  
LAZIO

ARSIAL

AGENZIA REGIONALE PER LO SVILUPPO

E L'INNOVAZIONE DELL'AGRICOLTURA DEL LAZIO