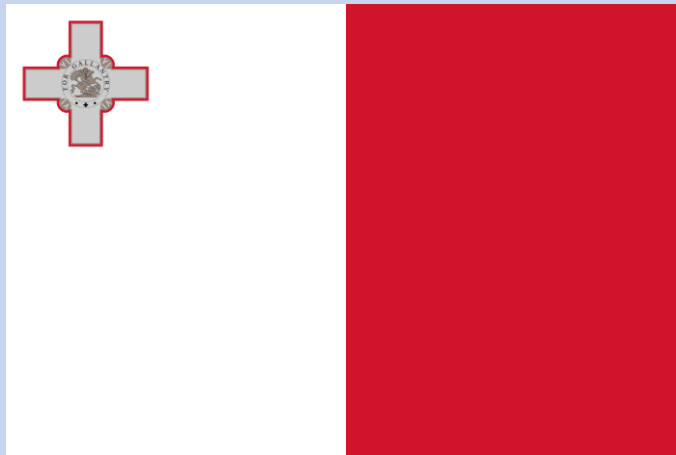


**TARGETED ANALYSIS //**

**DIGIPLAN – Fact sheet on digital  
plan data in Malta**

Annex 2.10 of final report

Final delivery // June 2021



This Targeted analysis was conducted within the framework of the ESPON 2020 Cooperation Programme, partly financed by the European Regional Development Fund.

The ESPON EGTC is the Single Beneficiary of the ESPON 2020 Cooperation Programme. The Single Operation within the programme is implemented by the ESPON EGTC and co-financed by the European Regional Development Fund, the EU Member States, the United Kingdom and the Partner States, Iceland, Liechtenstein, Norway and Switzerland.

This deliverable does not necessarily reflect the opinions of members of the ESPON 2020 Monitoring Committee.

#### **Coordination and Outreach**

Christian Fertner, University of Copenhagen and Piera Petruzzi, ESPON EGTC

#### **Authors**

University of Copenhagen (Denmark): Christian Fertner, Andreas Aagaard Christensen, Sara Folvig, Sophie Ingeholm

Norwegian University of Life Sciences (Norway): Marius Grønning, Daniel Galland, Bjørnar Rutledal, Marc Le Diraison

Swiss Federal Research Institute WSL (Switzerland): Anna Hersperger, Silvia Tobias, Corina Wittenwiler

Nordregio (Sweden): Julien Grunfelder, Alex Cuadrado

#### **Cite as**

ESPON DIGIPLAN (2021) Fact sheet on digital plan data in Malta. Annex 2.10 of final report. <https://www.espon.eu/digiplan>

#### **Advisory group**

Stakeholders: Bent Lindhardt Andersen and Ole Pagh Schlegel, Danish Business Authority, DK | Hilde Johansen Bakken, Ministry of Local Government and Modernisation, NO | Silvia Jost, Yves Maurer and Marc Pfister, Swiss Federal Office of Spatial Development, CH

ESPON EGTC: Senior Project Expert: Piera Petruzzi, Financial expert: György Alföldy

#### **Acknowledgements**

We would like to thank the experts who participated in the interviews.

#### **Information on ESPON and its projects can be found at [www.espon.eu](http://www.espon.eu).**

The website provides the possibility to download and examine the most recent documents produced by finalised and ongoing ESPON projects.

ISBN: 978-2-919795-63-5

© **ESPON, 2020**

Published in June 2021

Graphic design by BGRAPHIC, Denmark

Printing, reproduction or quotation is authorised provided the source is acknowledged and a copy is forwarded to the ESPON EGTC in Luxembourg.

Contact: [info@espon.eu](mailto:info@espon.eu)

**TARGETED ANALYSIS //**

**DIGIPLAN – Fact sheet on  
digital plan data in Malta**

Annex 2.10 of final report

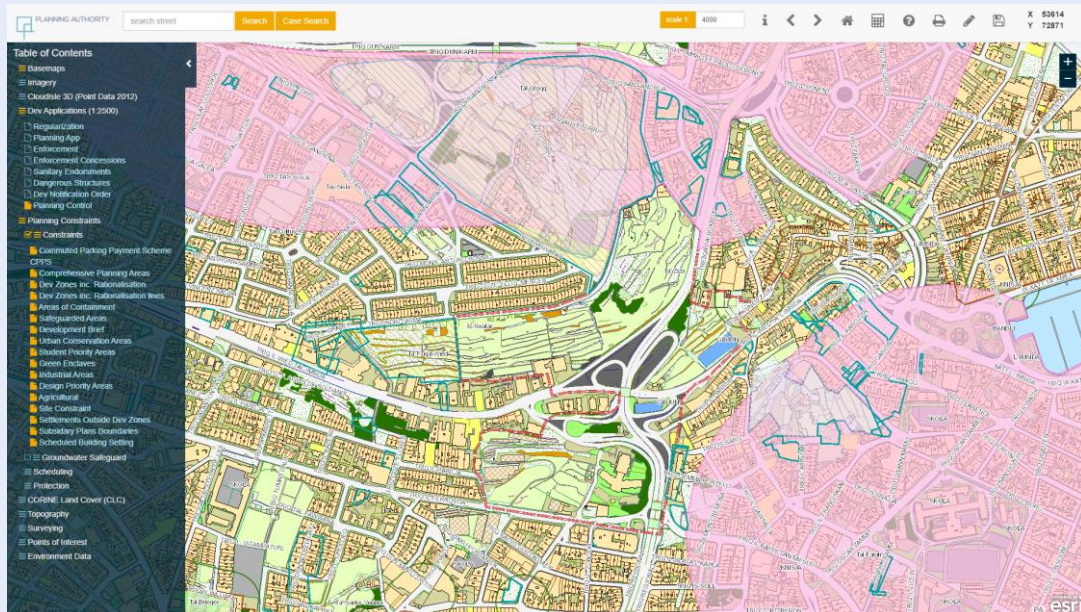
Final delivery // June 2021



This fact sheet summarises the experience in digitisation of plan data in Malta. This explorative investigation includes information on the digitisation of plan data, on the digital platform that contains plan data, the current uses of digital plan data as well as foreseen developments of the investigated platforms. The inputs are based on both a desk study and interviews with experts at the National Planning Authority.

## Malta (Centralised; two levels of government)

Malta is the only country in Europe in which all planning instruments are prepared by actors at one single-level. The Planning Authority of Malta prepares the local plans that coordinate and guide spatial planning at the municipal level. The digital plan data portal investigated is the national-wide geoserver ([geoserver.pa.org.mt/publicgeoserver](http://geoserver.pa.org.mt/publicgeoserver))



### Background information

Main stakeholder(s)	Planning Authority of Malta
Level of digitalisation of the geoportals	Intermediate: the user can make a limited number of simple operations based on the available plan data (e.g. measuring areas and distances, drawing, printing and sharing options).

### The digitisation of plan data

Main purpose(s)	It is to provide data, thus also increasing transparency on all development planning related applications concerning the Maltese islands.
Added value	Possibilities to use the digital plan data for statistical and spatial analyses, internally at the Planning Authority (e.g. amount of development proposed or carried out outside development zones within the last 5 years; footprint of certain types of areas and their changes over the last 10 years; how many quarries have been excavated; to what depth have they gone or filled in the past years).
Main driver(s)	Technical driver: new possibilities thanks to new technologies for better quality, more effective and more efficient: <ul style="list-style-type: none"> <li>• Integration of the data into one system.</li> <li>• Communication between GI-systems to check constraints (i.e. better workflow between actors)</li> </ul>
Main obstacle(s)	There were minimal since detailed documentation with specific requirements and specifications had been prepared prior to commencement of such development and monitored constantly during development.

<b>Malta (Centralised; two levels of government)</b>	
Standards and methods	<ul style="list-style-type: none"> <li>Background plan data that is digitalised (e.g. municipal boundaries) are entered by the Planning Authority. They are very accurate and cannot be changed.</li> <li>Information from planning application: The digital plan data is entered manually by the applicant through an e_Apps System (an on-line system which handles uploading of applications) (e.g. architect).</li> <li>All spatial data residing on Geoserver is quality checked by respective data owners and passed on the GI Team to publish as service on Geoserver.</li> </ul>
<b>The current platform</b>	
Type of digital plan data included	<p>Planning constraints (from the SPED document approved in July 2015): policies that are specially designed and digitised on the base map with well-defined boundaries.</p> <p>Local plans: only the administrative boundaries are included under “topography”. The local plans and policies are found on the website of the Planning Authority as PDF documents (<a href="https://www.pa.org.mt/en/local-plans">https://www.pa.org.mt/en/local-plans</a>). The local plans are from 2006 and there is no plan to add them on the Geoserver, but rather have only the planning constraints in the SPED. Adding the local plans would require important human resources</p>
Legal status of the digital plan data	<ul style="list-style-type: none"> <li>Not exactly legally binding. The portal provides the user to view an up to date situation with a high level of accuracy.</li> <li>Information to be used as “indicative”. The more accurate information can be found through the original vector-based GI data.</li> <li>There are disclaimers because prior to April 2016: environment formed part of the planning authority.</li> </ul>
<b>The current uses of digital plan data</b>	
Type of users	<p>The main type of users corresponds to applicants, mostly architects, on behalf of the actual developer/applicants.</p> <p>NGOs correspond to another important type of users.</p>
Number of users (monthly or yearly average)	Such information could not be retrieved
Example of evaluation of planning practices or innovative practices	The creation of heat maps, e.g. development areas that happened in the past few years. Such data can be linked to data from other sources (e.g. housing prices). The Information Resource unit of the Planning Authority takes care of external queries of spatial data request.
<b>Foreseen developments</b>	
<p>A new base map has been launched in June 2020. Layers based on polygons and categories. Height reading is added allowing to add 3d models and make special analysis. Also, a new coordinate system will be implemented shortly (in 2020).</p> <p>No longer term plans at the moment, partially due to the Covid-19 situation.</p>	

<b>Levels</b>	<b>Planning instruments (Name in English)</b>	<b>Included in the geoportal?</b>
National	Strategic Plan for the Environment and Development (SPED)	Yes, but only the planning constraints included in the SPED.
	Local plans (prepared and adopted at national level)	Yes, but only the administrative boundaries.





Co-financed by the European Regional Development Fund

Inspire Policy Making with Territorial Evidence

[espon.eu](http://espon.eu)



## **ESPON 2020**

ESPON EGTC

4 rue Erasme, L-1468 Luxembourg

Grand Duchy of Luxembourg

Phone: +352 20 600 280

Email: [info@espon.eu](mailto:info@espon.eu)

[www.espon.eu](http://www.espon.eu)

The ESPON EGTC is the Single Beneficiary of the ESPON 2020 Cooperation Programme. The Single Operation within the programme is implemented by the ESPON EGTC and co-financed by the European Regional Development Fund, the EU Member States, the United Kingdom and the Partner States, Iceland, Liechtenstein, Norway and Switzerland.

ISBN: 978-2-919795-63-5

### Disclaimer

This delivery does not necessarily reflect the opinion of the members of the ESPON 2020 Monitoring Committee.