



Spaces4people Panevėžys City Integrated Action Plan

Parengta projekto „Erdvės žmonėms“ metu

May, 2022



CONTENTS

| | |
|---|----|
| 1. INTRODUCTION | 2 |
| 2. CITY CONTEXT AND CHALLENGES | 3 |
| 2.1. City location | 4 |
| 2.2. Demographics | 4 |
| 2.3. City economy | 6 |
| 2.4. Topography and climate | 7 |
| 2.5. Urban context | 7 |
| 2.6. Network of open spaces | 9 |
| 3. PROJECT PROGRESS | 11 |
| 3.2. Workshops | 12 |
| 3.3. Small Scale Action Plan | 14 |
| 4. AIMS AND OBJECTIVES..... | 15 |
| 5. ACTIONS | 15 |
| 6. FUNDING AND DELIVERY | 21 |
| 7. TIMELINE | 22 |
| 8. RISK ANALYSIS | 23 |
| CONTACT DETAILS..... | 24 |
| | |
| Figure 1: Action-Planning Cycle (URBACT, 2017) | 2 |
| Figure 2: Review of Panevėžys Statistics (2020) | 3 |
| Figure 3: Population density | 5 |
| Figure 4: Residents in City 2020..... | 6 |
| Figure 5: Urban tissue diagram | 8 |
| Figure 6: Streets network..... | 8 |
| Figure 7: Panevėžys city special green infrastructure plan..... | 9 |
| Figure 8: Typology of open spaces..... | 10 |
| Figure 9: Public space improvement projects..... | 11 |
| Figure 10: SWOT analysis | 13 |
| Figure 11: Stakeholders | 13 |
| Figure 12: Small Scale Action Plan - bus route 1E..... | 14 |

1. INTRODUCTION

Panevėžys city participated in the project “GenderedLandscape” of URBACT. Gender equality is an important and current topic which crosscuts diverse aspects of integrated urban development, including the labour market, social services, entrepreneurship, public space, infrastructure, and governance.

URBACT supports European cities to develop sustainable integrated responses to the pressing challenges they face today. It offers them a unique opportunity to learn from other peers in Europe to improve the way cities are managed (URBACT, 2019).

This Integrated Action Plan is an outcome of the project “GenderedLandscape” and the city is prepared to address challenged of gender equality.

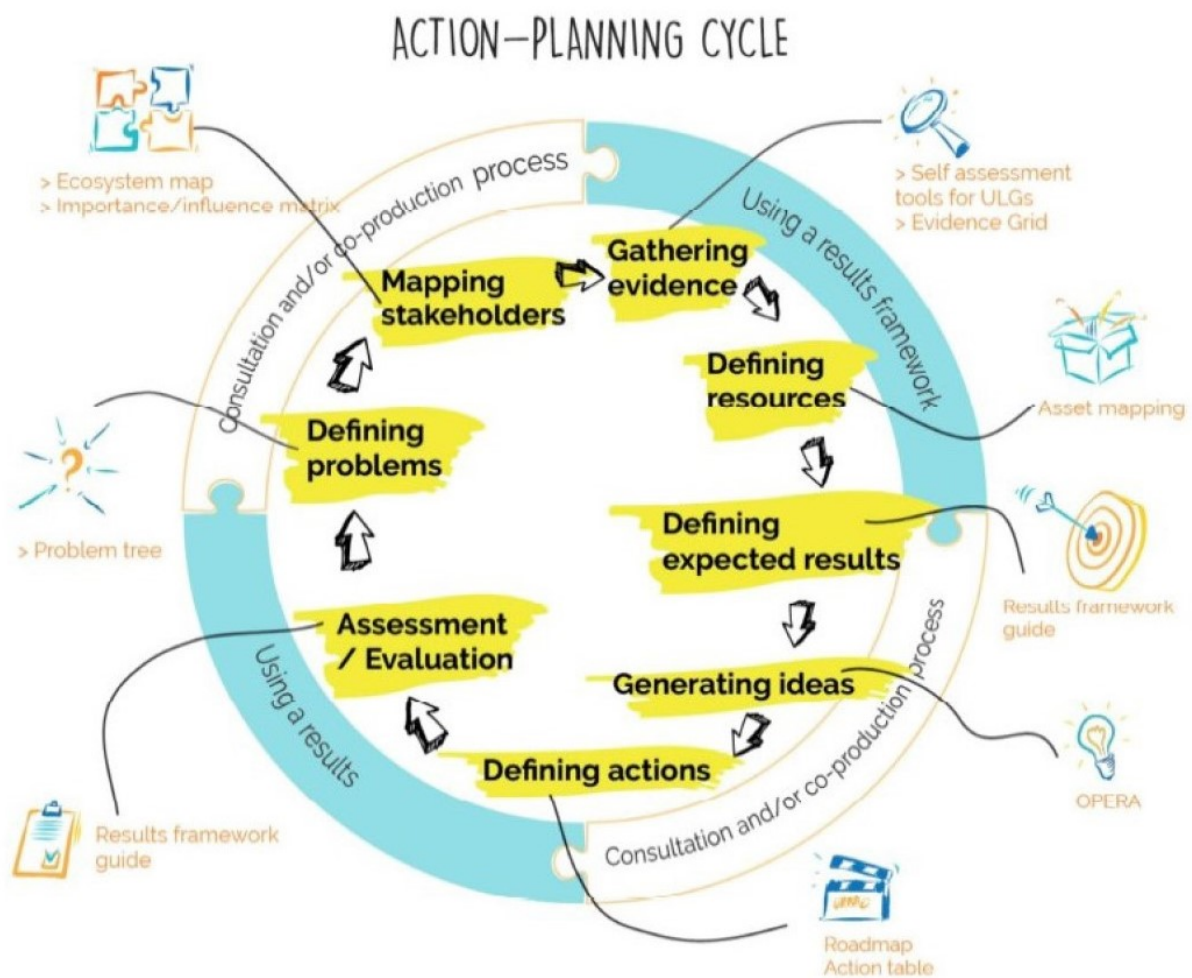


Figure 1: Action-Planning Cycle (URBACT, 2017)

2. CITY CONTEXT AND CHALLENGES



Figure 2: Review of Panevėžys Statistics (2020)

2.1. City location

Panevėžys (population 83 770 in 2021) is the fifth largest city in Lithuania and the municipal seat of the county by the same name, which is home to about 235,000 inhabitants. Panevėžys enjoys a good strategic location along the Via Baltica highway, midway between the capital cities of Riga and Vilnius and within 3 hours drive of three international airports (Vilnius, Kaunas, Riga). The city is a regional centre of culture and sports and famous for its theatres and cultural and sporting events. The strategic planning for the city is well developed and includes a sustainable urban mobility plan, a blue strategy, and a green & sustainable city strategy. Furthermore, in 2020, Panevėžys have signed the climate change emergency declaration. The comprehensive territorial plan of the Republic of Lithuania, which defines the objectives of territorial development and functional priorities for the use of territories in order to ensure the coherence of strategic planning at lower levels, defines a metropolitan partnership between the city of Panevėžys and the city of Šiauliai.

2.2. Demographics

The city's population is declining by about 1,000 a year. First, the population of the city is shrinking by approximately 1,000 inhabitants annually. This net loss is divided fairly evenly across natural population change (net loss of 200–300 inhabitants annually), emigration within Lithuania (net loss of 200–400 inhabitants annually) and emigration to other countries (net loss of 400–500 inhabitants annually). Furthermore, Panevėžys is one of the oldest counties in Lithuania; elderly inhabitants make up about 22% of the population. The map below demonstrates density of population in the city by adopting GIS data from Statistics Lithuania.

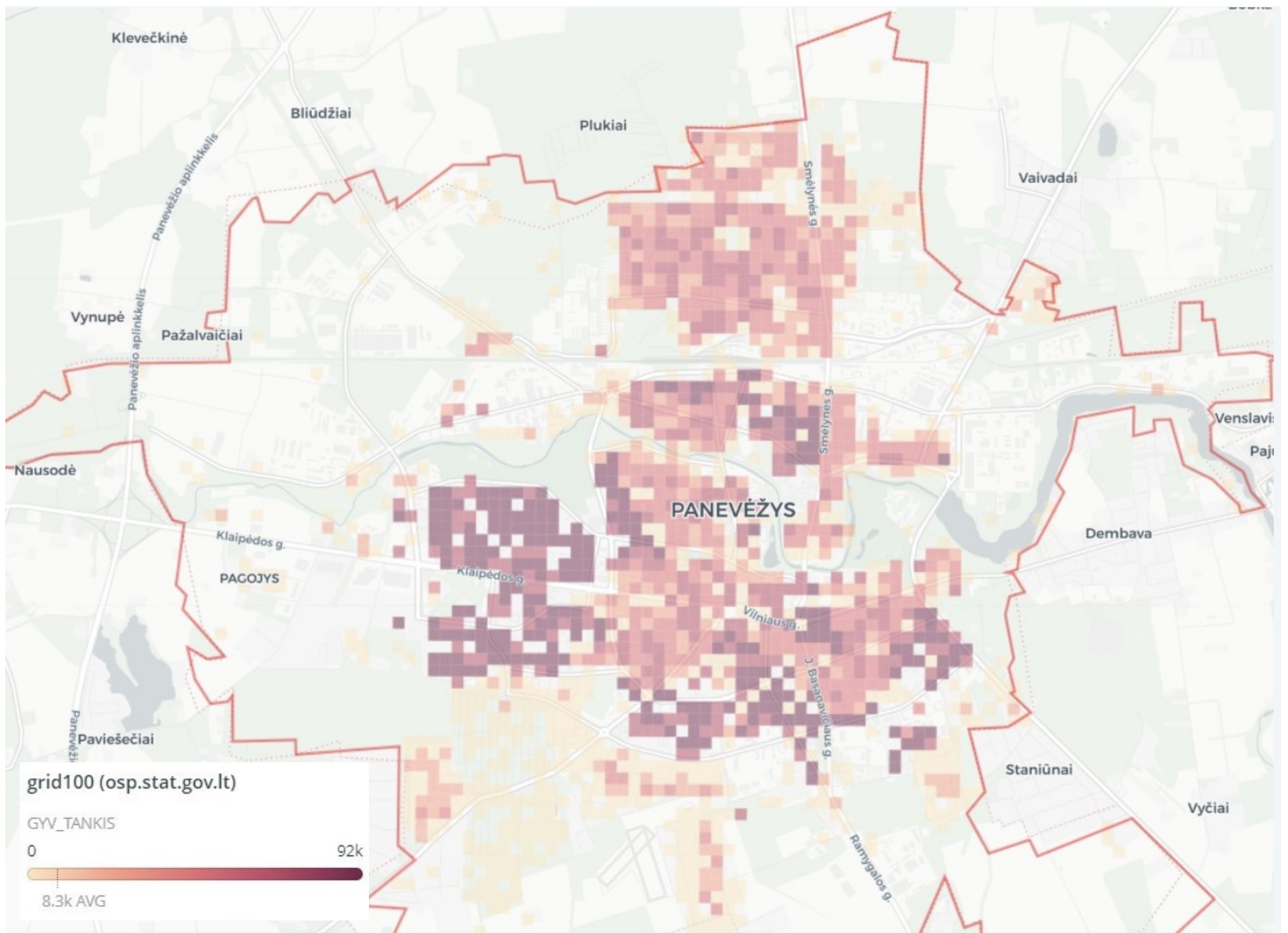


Figure 3: Population density

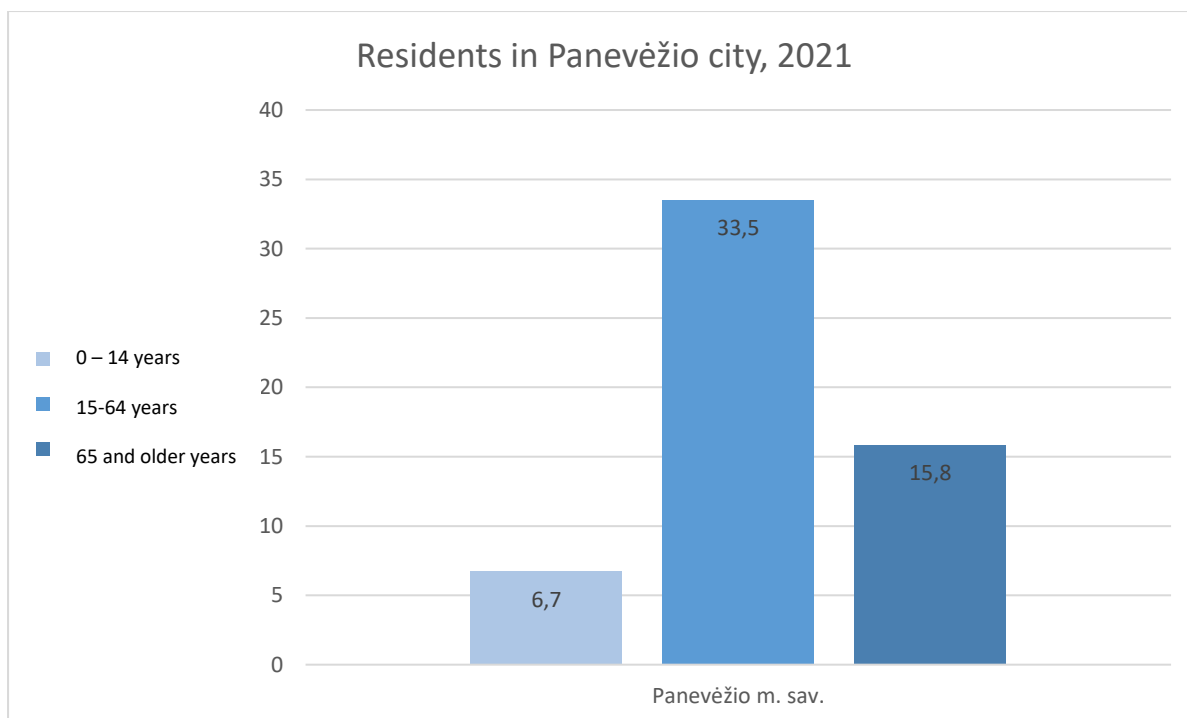


Figure 4: Residents in City 2021

2.3. City economy

The city is home to 3,574 companies. The vast majority of the city's economic production, about 70%, is focused on exports. The majority of the exporting companies are located in the city's Free Economic Zone, a tax-free zone in which the number companies has been growing for the last fifteen years. In addition to Norway, Panevėžys products are mainly exported to Italy, Latvia, Sweden, Finland, and Saudi Arabia. The city is home to one university department (Kaunas Technology University's department for engineering & business administration), as well as a number of tertiary colleges & vocational schools.

Despite these actions, women's share of power in economic and political decision making in Lithuania remains below average for the European Union. Just 23% of parliament, 28% of ministers, vice-ministers and minister's advisers and 25% of municipal council positions are held by women. On the whole, women make up 37% of all leaders in the Lithuanian ruling elite such as parliamentarians, senior state officials, and executives of companies and institutions. At the beginning of 2019, Lithuania was the only country in the European Union with a men-only government. Nevertheless, grassroots and civil society support for women's rights, needs, and participation are relatively strong; in Panevėžys, these actors are primarily

linked to the private sector and include women's business groups and representatives, activists for the cessation of violence against women, and initiatives for women in ICT and industry.

According to Statistics Lithuania, the number of candidates of women and men to the city council were equal in Panevėžys city, in 2019. However, women were a minority in the number of elected members of city council back in 2015. Only 3 women candidates participated in a mayor election in Panevėžys city, in 2019, while 8 men candidates participated in the same elections.

2.4. Topography and climate

The terrain of the urban area is flat. The Nevėžis river divides the city territory into two parts. Climatic conditions are characterized by cold winters with a long period of snow, warm autumns with long rains and hotter summers. Snow and rain also have a significant impact on road conditions. The amount of snow is not always favourable for non-motorized modes of transport, although the level terrain provides an opportunity to develop such modes of transport.

2.5. Urban context

The urban structure of the city is marked by contrast between residential and work areas. Figure 5 identifies the building structure of Panevėžys city. The Nevėžis river divides the city territory into two parts. Figure 6 identifies the network of city streets. Intersecting structural axes of the city: north - south Smėlynės - J.Basanavičiaus street route, and east - west Vilnius - Klaipėdos street route. The densely populated residential areas further away from the center are characterized by a soviet modernist blocks and monofunctional neighbourhoods with some basic social infrastructure.



Figure 5: Urban tissue diagram



Figure 6: Streets network

2.6. Network of open spaces

The central part of the city is characterized by intense infrastructure of public spaces and greenery. Laisvės square is the city's the main square and the public space. A little further west from Laisvės square, there is the Nepriklausomybės square with the church and the Musical Theater. Senvagė together with the Nevėžis River and the surrounding greenery is part of the city's identity and one of public spaces, which also creates green and blue corridors that connects, with cycling and walking routes, with city parks of the Recreation and Culture Park and Skaistakalnis Park. The 13th of January square has a memorial function: the square commemorates the events of 13 January every year. The special plan for the management of greenery in Panevėžys, presented below, identifies the city's green infrastructure.

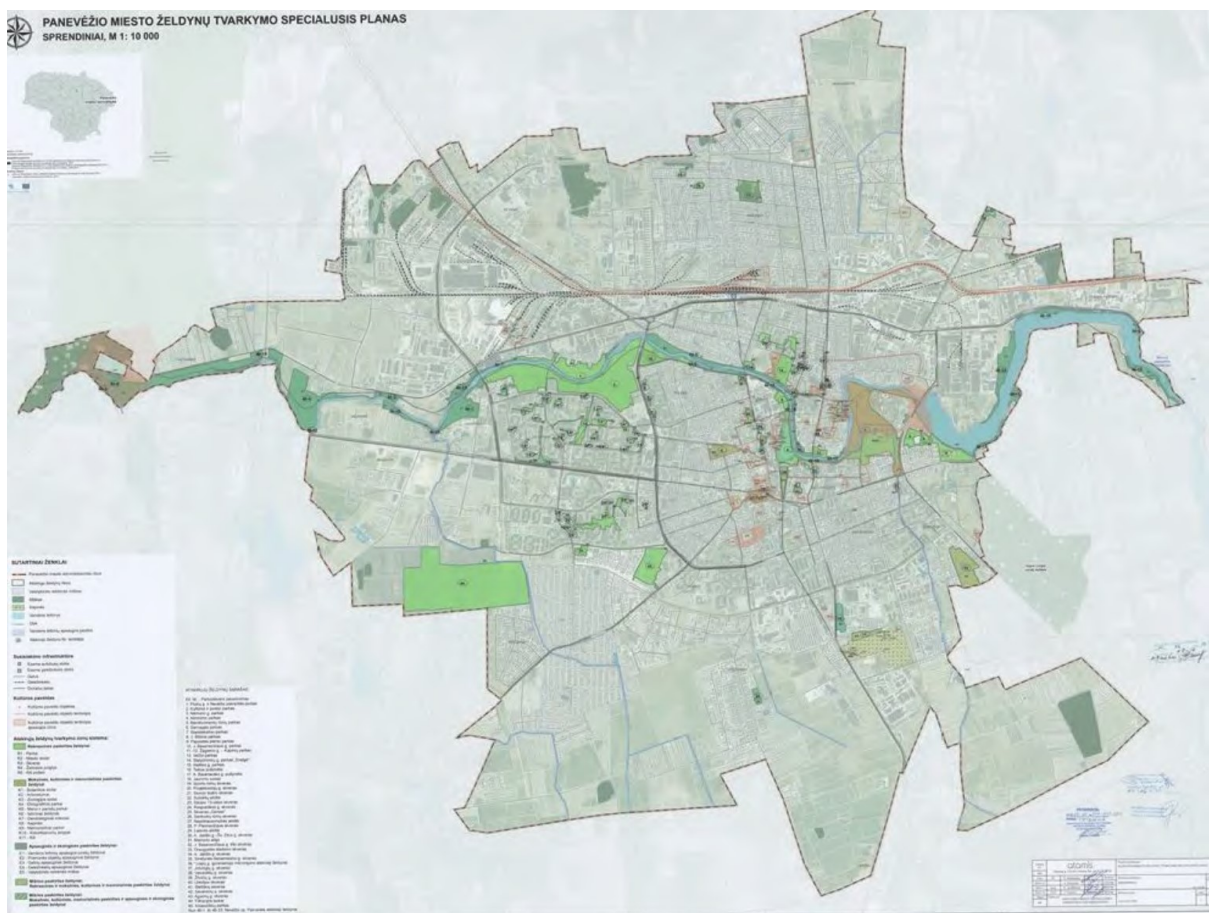


Figure 7: Panevėžys city special green infrastructure plan

The plan below identifies the public spaces in the central part of the city and the entrances to the center, which have been divided according to the different prevailing typology:

- Parks (green)
- Squares (yellow)
- Churchyards (red)

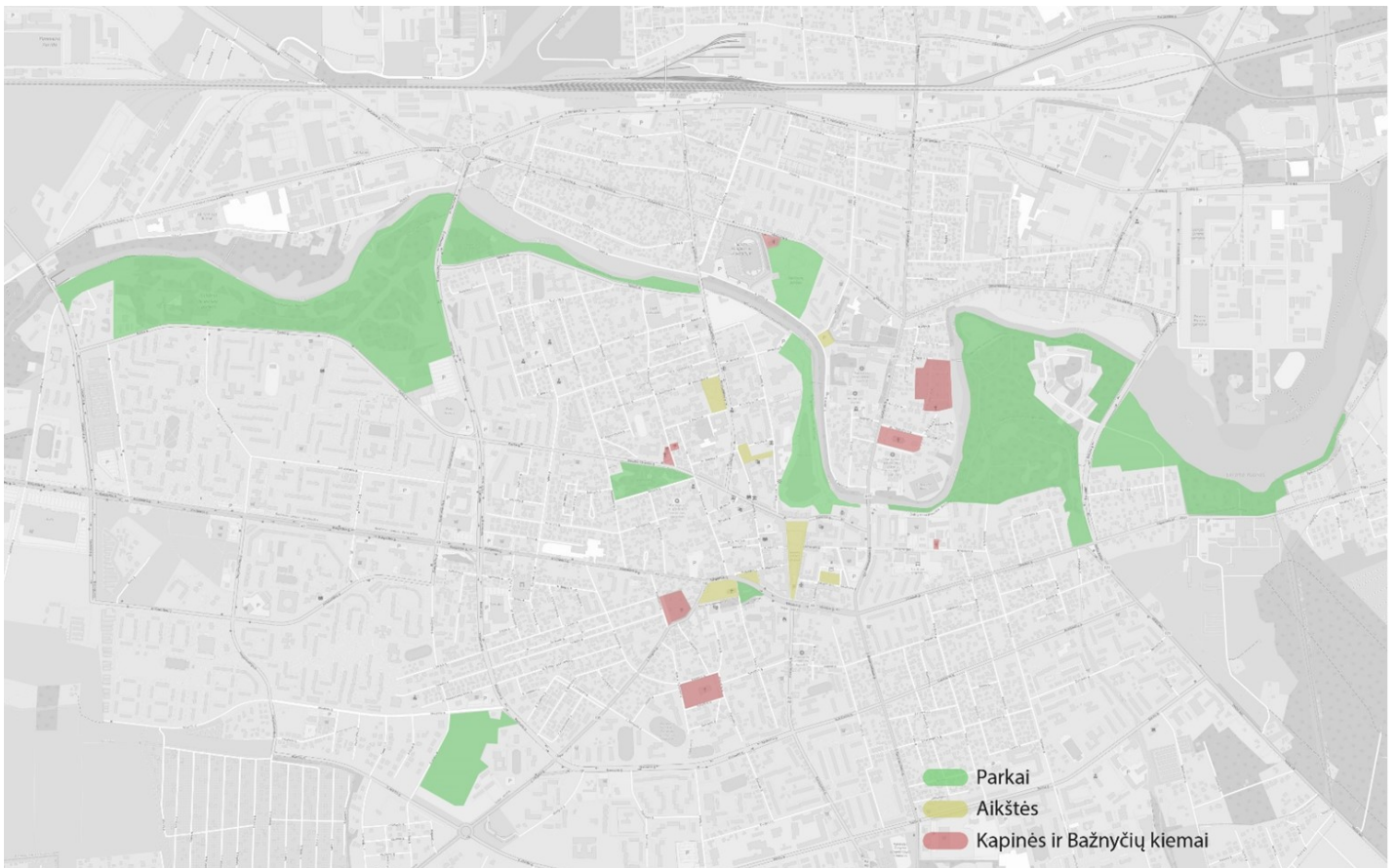


Figure 8: Typology of open spaces

3. PROJECT PROGRESS

3.1. Challenges

The city of Panevėžys successfully implementing important public space improvement projects (the map below): Laisves square, bus station and its accesses planned, cultural projects under construction streets, new bicycle paths are being prepared, green areas are being managed, according to the Panevėžys City Integrated Territories Development Program. Implementing compact city principles, it is important for this project to improve the management and quality of public spaces by implementing the principles of sustainable mobility.

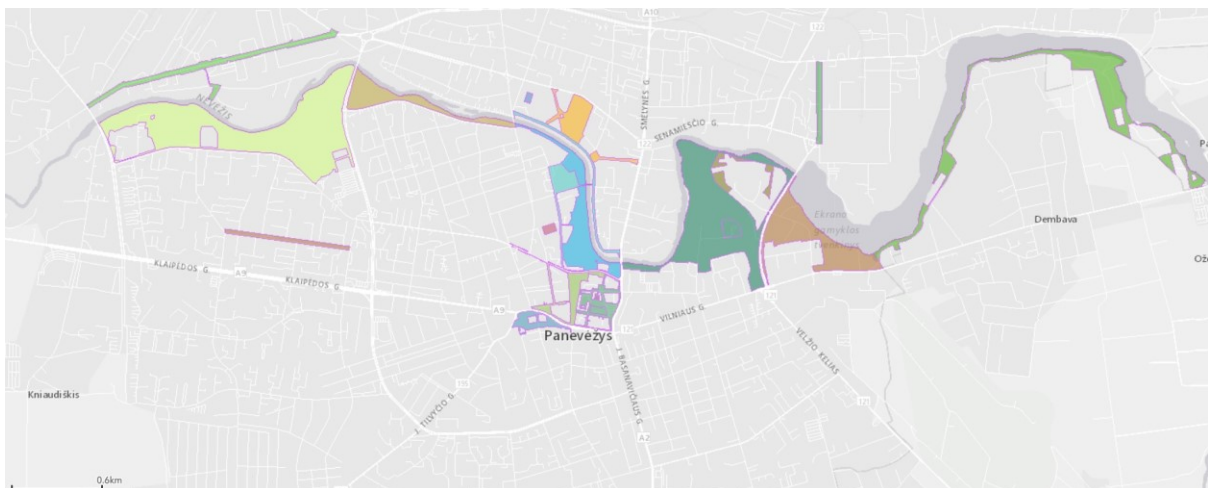


Figure 9: Public space improvement projects.

During the first phase of the project, the main challenges of the city were identified: the management of parking spaces at the expense of public spaces, the flow of cars through the city center, ensuring the mobility of residents between densely populated areas and the city center. Also, it was noted that residents of urban residential areas face limited parking spaces and poor parking management. Since solutions to improve the quality of a network of footpaths together with parking management in residential areas is defined in the Sustainable Mobility Plan of Panevėžys this challenge has not been solved so far.

3.2. Workshops

During the second stage of the project, workshops were organised that helped to specify problem areas. Members of the LAG successfully participated in the discussion by sharing their professional and academic experience in various fields of urban planning and management of open spaces. Also, the current situation and possible solutions were discussed. URBACT tools such as „4Ws“, „5 whys“, Action table, „bank of ideas“ were adopted during the workshop sessions. Also, tools remained accessed to all LAG members as discussions extended beyond workshop sessions. Also, an interactive GIS maps, which adopted comprehensive census data, was created. The tool was useful to conduct a spatial city context analysis and worked as effective tool to communicate results of the analysis with members of local action group and other stakeholders. The tool remained on a public domain and accessed to everyone.

Discussion during the workshop sessions, the members of the LAG highlighted the following problematic areas:

- Domination of motor vehicles in public spaces.
- Priority is given to a private motor transport in the city center.
- Limited mobility of citizens through alternative modes of transport.



Figure 10: SWOT analysis

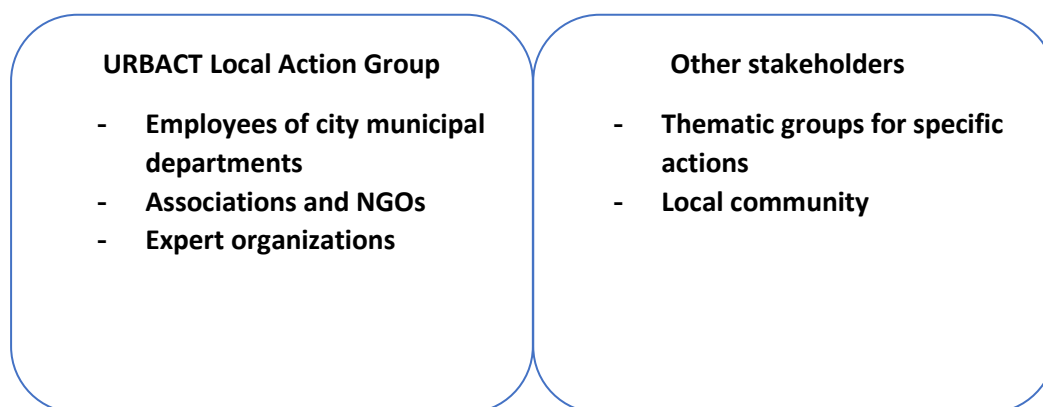


Figure 11: Stakeholders

3.3. Small Scale Action Plan

The city of Panevėžys implemented a small-scale pilot project which contributed to the main goal of reducing the misuse of public space and ensuring the quality of public space for pedestrians and cyclists, promoting better mobility and addressing the challenges of intensive transport through the city center. From April 2021, the city's bus traffic route - No.1E "Kniaudiškių str. - "Consultation polyclinic". The aim of this initiative was to improve connection and mobility between the western part of the city and the treatment services complex of Panevėžys City Consultation Polyclinic and Panevėžys City Hospital. It was hoped that the people of Panevėžys would appreciate this innovation and that it would further encourage them to travel around the city by public transport. The new 1E route is expected to run 16 buses a day. The initiative was announced during an information campaign.



Figure 12: Small Scale Action Plan - bus route 1E

4. AIMS AND OBJECTIVES

The aim of this integrated action plan, developed with the input of all members of LAG. **The aim is to reduce the misuse of public space and ensure the high quality of public space for pedestrians and cyclists by promoting better mobility for the population and tackling the challenges of intensive transport through the city centre.** The defined objective is specific, measurable, achievable, realistic and temporary (SMART):

- Improve and promote citizen mobility via alternative modes of movement to reduce motor vehicle traffic through city center.

5. ACTIONS

The table below sets out the specific actions identified that were developed during workshop sessions. Also, majority of suggestions of specific actions were received after the workshop session, as members of local action group shared their actions in organised URBACT tool of 'bank of ideas'.

| Objective: Improve and promote citizen mobility via alternative modes of movement to reduce motor vehicle traffic through city center. | | | | | | |
|---|--|-----------------------------|---|----------------------------------|--------------|---------------------------------------|
| Action | Principal executor | Key partners | Short description | Output indicator | Terms | Resources |
| Install and improve a bus stop for a bus route - No.1E | Panevėžys city municipality | | The bus route - No.1E was part of implemented small scale action plan. It is required to install and improve a bus stop infrastructure for waiting passengers. | Improved bus stop infrastructure | 2022 – 2023 | City municipality budget |
| E-ticket | VŠĮ "Panevėžio keleivinis transportas" | Panevėžys city municipality | <p>During the implementation of the project "Implementation of Sustainable Mobility Measures in Panevėžys City" an electronic ticket will be installed and information boards will be installed at bus stops, which will contain information on bus routes and timetables, an interactive route map, and in other parts of the city and other relevant information on urban public transport and sustainable urban mobility, the information will be provided in several languages.</p> <p>With the implementation of the electronic ticketing system, it will be possible to apply a flexible tariff system, high-quality control of carriers and passengers will become better, the number of ticket sales channels will increase, and passenger information will become more efficient. The introduction of e-ticketing is a priority measure to promote sustainable</p> | Project implemented | 2022 - 2023 | City municipality budget and EU funds |

| Objective: Improve and promote citizen mobility via alternative modes of movement to reduce motor vehicle traffic through city center. | | | | | | |
|--|-----------------------------|--------------|--|---------------------|-------------|---------------------------------------|
| Action | Principal executor | Key partners | Short description | Output indicator | Terms | Resources |
| | | | mobility and improve public transport services. | | | |
| Pedestrian and bicycle path from Vakarinės st. towards the modernization of Berčiūnai settlement | Panevėžys city municipality | | One of the main bicycle paths in Panevėžys is the pedestrian and bicycle path connecting Panevėžys city and Berčiūnai settlement. Panevėžys City Municipality Administration initiated the project “Pedestrian and Bicycle Trail from Vakarinės str. Towards the Modernization of Berčiūnai Settlement”, during which the above-mentioned pedestrian and bicycle path will be modernized. After the implementation of the project, the opportunities for the movement of Panevėžys city residents will improve, the number of car users will decrease, CO2 emissions will increase, and the attractiveness of this area will increase. | Project implemented | 2022 - 2023 | City municipality budget and EU funds |
| Day without a ticket | Panevėžys city municipality | | Update existing initiative of “day without a ticket” when public transport is free of charge. The rules of program must be updated. Make it possible to travel without a ticket on the following days: <ul style="list-style-type: none"> September 1, first day of learning years (encourage less | Program updated | 2022 | Municipality internal resources |

| Objective: Improve and promote citizen mobility via alternative modes of movement to reduce motor vehicle traffic through city center. | | | | | | |
|--|-----------------------------|----------------------------------|---|---|-------------|---------------------------------------|
| Action | Principal executor | Key partners | Short description | Output indicator | Terms | Resources |
| | | | car traffic and free travel for parents and students on this day). | | | |
| Organize the "Day - without your car" initiative | Panevėžys city municipality | VšĮ Panevėžys development agency | <p>Organize an information campaign to encourage the choice of public transport or cycling as a way to travel in the city.</p> <p>Initiate an event to mark this initiative, which would encourage the choice of alternative modes of transport to the car. During the event, close one of the central streets.</p> | <p>Information campaign implemented</p> <p>Event organised</p> <p>Central street closed</p> | 2022 - 2023 | Municipality internal resources |
| Vehicle sharing platform | Panevėžys city municipality | VšĮ Panevėžys development agency | To create a virtual platform, at the beginning of the section on the website of the Panevėžys Development Agency, where it would be possible to place information about private bicycle, electric scooters and car rental or sharing companies operating in Panevėžys. | Virtual platform on website created | 2023 - 2024 | Municipality internal resources |
| To install a pilot bicycle storage in Klaipėda district | Panevėžys city municipality | | A pilot bicycle storage facility is being installed in the most densely populated area of Panevėžys. Identify the current need for bicycle storage. Conduct a survey of which communities would like to take the opportunity. In case of greater need, to | <p>Survey conducted</p> <p>Suitable location identified</p> | 2023 - 2024 | City municipality budget and EU funds |

| Objective: Improve and promote citizen mobility via alternative modes of movement to reduce motor vehicle traffic through city center. | | | | | | |
|--|-----------------------------|----------------------------------|--|---|-------------|---|
| Action | Principal executor | Key partners | Short description | Output indicator | Terms | Resources |
| | | | pursue the further implementation of the Mobility Plan actions at the city level by installing bicycle storage facilities. | Pilot impact and popularity evaluated | | |
| Cheap public transport ticket for students | Panevėžys city municipality | | According to the Mobility Plan, public transport is subsidized as an incentive for students to use public transport annual ticket for students. Following the example of Vilnius, it is recommended the annual price of an unlimited public transport ticket for students is 10 euros. | New tariffs implemented | 2022 - 2023 | Municipality internal resources |
| Organize a series of open lectures on urban planning and public spaces for residents and decision makers | Panevėžys city municipality | VšĮ Panevėžys development agency | A series of open lectures on urban planning and public spaces is being organized to introduce residents and interested communities to existing and potential local development initiatives, and to educate residents and decision-makers about the democratic principles of urban planning. | Series of open lectures organised Target 5x | 2022-2023 | City municipality budget and EU funds |
| Regularly close the Elektros street for pedestrians and cyclists from Friday to Sunday. | Panevėžys city municipality | VšĮ Panevėžys development agency | It is planned to temporarily restrict traffic on the central street. Based on the experience of other countries, the possible result is a vibrant street and decreased traffic. A population survey is conducted at the beginning of the initiative and half a year later to undertake an evaluation of the initiative. | Plan for closing street prepared Street closed Public survey conducted 2x | 2022-2023 | Municipality internal resources Voluntary contribution |

| Objective: Improve and promote citizen mobility via alternative modes of movement to reduce motor vehicle traffic through city center. | | | | | | |
|---|-----------------------------|----------------------------------|--|--|-------------|---------------------------------|
| Action | Principal executor | Key partners | Short description | Output indicator | Terms | Resources |
| | | | Panevėžys Development Agency acts as an information partner. | Information campaign organised | | to the promotion of lectures |
| Carry out a comprehensive impact assessment of renewed public space investment projects, identifying the strongest and weakest sides from a consumer (residents) perspective. | Panevėžys city municipality | VšĮ Panevėžys development agency | Carrying out a comprehensive assessment of refurbished public space investment projects using the Public Spaces Assessment Publication “Our Environmental Spaces. How to evaluate and improve them”. The questionnaire is designed as a tool to first analyze and simultaneously discover the strengths and weaknesses of public spaces. | Renewed open spaces are identified Target 3x Evaluation conducted Results published | 2022 - 2023 | Municipality internal resources |

6. FUNDING AND DELIVERY

The implementation and monitoring of the Integrated Action Plan will be coordinated by the Panevėžys City Municipality Administration. However, most of the actions included in the IAP will be implemented in collaboration with ULG and relevant stakeholders, depending on the nature and scope of the actions.

The necessary funds will be allocated from the budget of Panevėžys City Municipality and EU funding programmes 2021–2027. The IAP will be integrated into the strategic action plans of Panevėžys City Municipality. In addition, ULG members have expressed intentions to contribute to the implementation of the plan, and certain actions will be implemented through their voluntary contribution. In addition, funding for the implementation of the IAP will be determined on a case-by-case basis.

7. TIMELINE

| Actions | 2022 | | 2023 | | 2024 | |
|--|----------------------|----------------------|----------------------|----------------------|----------------------|----------------------|
| | 1 st half | 2 nd half | 1 st half | 2 nd half | 1 st half | 2 nd half |
| Install and improve a bus top for a bus route - No.1E | | | | | | |
| E-ticket | | | | | | |
| Pedestrian and bicycle path from Vakarinės st. towards the modernization of Berčiūnai settlement | | | | | | |
| Day without a ticket | | | | | | |
| Organize the "Day - without your car" initiative | | | | | | |
| Vehicle sharing platform | | | | | | |
| To install a pilot bicycle storage in Klaipėda district | | | | | | |
| Cheap public transport ticket for students | | | | | | |
| Organize a series of open lectures on urban planning and public spaces for residents and decision makers | | | | | | |
| Regularly close the Elektros street for pedestrians and cyclists from Friday to Sunday. | | | | | | |
| Carry out a comprehensive impact assessment of renewed public space investment projects | | | | | | |

8. RISK ANALYSIS

According to the scope of actions defined in the IAP, the table below discusses the further risks and their assessment.

| Type of risk | Risk description | Risk level | Risk management |
|----------------------|--|------------|---|
| Timing | The actions planned for activities could not be completed within the stipulated time despite commitment and plan of action. | High | Readjusting/rescheduling planned operations and other activities to ensure the realization of actions. |
| Financing | Lack of financing or need for additional finances to realize provided activities could cause a delay in the implementation process. | Medium | Ensuring proper level of realization of actions and other committed activities, by compensating lack of finances using other funding programmes and/or inner funds of the implementing institution. |
| Staff | Changes in personnel or shifting responsibilities could cause the interruption in plan's implementation process. | Low | Filling vacant positions by finding equivalent or higher qualification and expertise, primarily, exploiting existing human resources available, and if necessary – recruiting specialists from outside. |
| Governmental changes | Changes at the highest level of city management can cause the abandonement of actions and the transfer of power and resources to other matter. | Medium | Making sure to have a full support of City Council in order to be able implementing the actions provided in IAP. |

CONTACT DETAILS

For more information on Integrated Action Plan of the Panevėžys City, please contact:

Dalia Gurskienė, Spaces4people Project's Local Coordinator

dalia.gurskiene@panevezys.lt

More information about the Panevėžys City:

<https://www.panevezys.lt/>

<https://www.panevezysnow.lt/>

More information about GenderedLandscape project:

<https://urbact.eu/genderedlandscape>