

INTENSIFY Project



Milton Keynes Regional Action Plan

November 2021



Table of Contents

Part I. General Information	3
------------------------------------	----------

Part II. Policy Context	4
--------------------------------	----------

Part III. Action 1 Re: Fit	6
-----------------------------------	----------

Relevance to the Project
Nature of the Action
Stakeholders involved
Timeframe
Indicative costs
Indicative funding Sources

Action 2 Carbon and Energy Hub	14
---------------------------------------	-----------

Relevance to the Project
Nature of the Action
Stakeholders involved
Timeframe
Indicative costs
Indicative funding Sources

Signature of project partner	20
-------------------------------------	-----------

Part I

General Information

Project: [INTENSIFY](#)

Partner Organisation: [Milton Keynes Council](#)

Country: [United Kingdom](#)

NUTS2 region: [Berkshire, Buckinghamshire and Oxfordshire](#)

Contact person: [Jeremy Draper](#)

Email address: Jeremy.Draper@Milton-Keynes.gov.uk

Phone number: [+ 44 7827 309436](tel:+447827309436)

Part II

Policy context

The Action Plan aims to impact:

- ☐ Investment for Growth and Jobs programme
- ☐ European Territorial Cooperation programme
- ☒ Other regional development policy instrument

Name of the policy instrument addressed:

Milton Keynes Sustainability Strategy Action Plan (SSAP).

The previous Action Plan was the 2012 Low Carbon Living Action Plan (LCLAP). The LCLAP was referred to in the INTENSIFY Application Form. During the INTENSIFY Project the first draft of the new MK SSAP was approved by cabinet in March 2020. The updated version included feedback from a public consultation in the form of a Climate Change Task and Finish Group. This updated MK SSAP was approved by cabinet and adopted in December 2020.

Further details on the policy context and the way the action plan should

Contribute to improve the policy instruments:

The INTENSIFY RAP will contribute and improve the MK SSAP policy instrument aims with the following actions over the next five years:

INTENSIFY RAP Action	MKC Action	SSAP Ref	Activity Stage Commence
Action 1. Re:Fit	Retrofit all MKC housing to improve energy efficiency	16	2022
	Install PV on Council owned assets	21	2019
	Implement a zero-carbon building programme for all MKC buildings and schools	33	2022
	Develop a strategy to tackle fuel poverty in MK Borough.	55	2021
Action 2. Carbon	Provide energy transition advice to individuals, organisations and businesses	13	2021

and Energy Hub	Mobilise a Carbon and Energy Hub to facilitate and accelerate energy generation and carbon reduction opportunities	23	2021
	Establish a dedicated web and social media presence to provide information and news in support of ambitions for a carbon neutral Milton Keynes.	50	2021
	Establish or support the establishment of a climate change advice service for businesses and citizens.	51	2021
	Establish a Climate Change Partnership to include a wide range of organisations in the public, private and voluntary sectors to work together to achieve a carbon neutral MK by 2030.	75	2022

Table 1. Excerpts from Sustainability Action Plan Annex A update v.1.0. 04.02.2020

Relevance to the project

The two actions in the INTENSIFY RAP will strengthen and combine the intentions set out in the INTENSIFY Application Form for

- new projects
- a step change in decarbonising the city with improved governance
- apply new knowledge and information gained over last 4 years of the INTENSIFY Project
- Citizen engagement

Through engagement with businesses, organisations and communities there will be an increase in the number of citizens actively committed to carbon reduction a performance indicator in the INTENSIFY Application Form.

Part III. Details of the actions envisaged

Action 1. Re:Fit

1. Relevance to the project

The new collaborative programme Re:Fit will work with local partners and citizens to reduce carbon emissions. These are the two key aims of the INTENSIFY Project.

Exchange of Experience through Good Practice and Study Visit

Inspiration for Re: Fit is taken from the Energy Performance Integrated Contract (EPIC) in Treviso during an exchange of experience site visit. Officers from the Milton Keynes INTENSIFY team learnt about EPIC in depth during a study visit to Treviso in November 2019. Antonio Zonta presented details of the contract and lessons learnt from experience at the Provincia di Treviso, via Cal di Breda 116, Treviso at 09.30 on the 13th November.

Treviso has produced for INTENSIFY a Good Practice which describes how the EPIC project has upgraded the energy performance of schools in the province. EPIC has been successfully running for 20 years effectively upgrading over 100 school buildings in the technical register of stock. The more recent phases of the EPIC are about focusing on the management of the buildings and helping the users and energy managers to operate the space in the most energy efficient way.

Adapting partner's Good Practice to Milton Keynes

Like Treviso, the Milton Keynes Re: Fit action will be a partnership with a contractor who will deliver guaranteed savings on retrofitting Milton Keynes Council buildings. Most of the buildings owned by Milton Keynes Council are public buildings. The Council portfolio includes offices, libraries, community centres and the environment depot at Bleak Hall in Milton Keynes. Re:Fit will be rolled out in Phases starting with the highway's depot followed by refurbishment of the Crematorium, libraries and social housing. These are indicative phases and are subject to change if circumstances permit (funding etc).

Phase 1 -2020 start	Phase 2 2020 start	Phase 3 2020 start	Phase 4 2023 ongoing
Highways Depot	Crematorium	Libraries	Social Housing

Table 2. Timeline for refurbishment of MKC buildings

Milestones for the reduction of CO2 emissions will be every six months to ensure the annual 10% target is being met. The first assessment for each phase will be December 2021 then every six months as in Table 3.

	Phase 1 Highways	Phase 2 Crematorium	Phase 3 Libraries
Reporting period of CO2 emissions saved compared to previous year. Calculations will use UK Government GHG conversion factors	December 2021	December 2021	December 2021
	June 2022	June 2022	June 2022
	December 2022	December 2022	December 2022
	June 2023	June 2023	June 2023

Table 3. Milestones for Re:Fit Phases

Calculating CO2 reductions

The actual kWh consumption is the main element of the milestones. These figures are taken from the invoices submitted to Milton Keynes Council by the energy company. In addition, total CO2 savings will be calculated accurately using up to date conversion factors from the UK government. Conversion factors used for reporting gas CO2 savings are current rates of gross calorific value (CV) because energy billing uses this factor. The December 2021 calculations will use the June 2021 factors. The June and December 2022 calculations will use the June 2022 set of factors.

Fuel	Unit	kg CO2e	kg CO2
Natural Gas	kWh (Gross V)	0.18316	0.18282
UK Electricity generated	kWh	0.21233	0.21016

Table 4. Greenhouse gas reporting: Conversion factors 2021 (UK Government GHG Conversion Factors for Company Reporting, Department for Business, Energy and Industrial Strategy)

The electricity factor fluctuates annually as the fuel mix in UK power stations and the proportion of net imported electricity changes. This fluctuation depends on the relative prices of coal and natural gas as well as changes in peak demand and renewables. For example the 2021 CO2e factor decreased by 9% in comparison to the 2020 factor due to less use of coal and greater proportion of renewable energy generation.

Comparison between Treviso EPIC and the MK Re:Fit

Like Treviso's EPIC programme, Re: Fit will require the contractor Engie to identify where the greatest improvements are required and guarantee the carbon savings.

	EPIC (Treviso)	Re: Fit (Milton Keynes)
Contractor	ENGIE	ENGIE
Action	Improve maintenance standards Identify critical points of the building or service system	Upgrade building fabric to standards above requirements of Building Regulations

	Technology improvements Working group with focus on innovation and best use of space and resources Improve	Install Photovoltaic panels on all suitable MKC buildings Implement a zero-carbon building programme for all new MKC buildings and schools Develop a strategy to tackle fuel poverty in MK Borough
Carbon savings	Guaranteed	Guaranteed
Portfolio	Schools Institutional buildings	Offices Highways Depot Crematorium Libraries social housing
Citizen Engagement	Energy saving action plan for each school Green Schools Project	Awareness raising campaign with energy management training for all citizens Integrate work programme with skills training at MK College
Scale of Investment	Circa €40 million for each round of contracts	Circa £2 million pounds for each round of contracts, more if funding permits.
Difficulties	Complex contracts Decreasing improvements with each round of contracts	Short timescale for significant improvement of energy efficiency to meet 2030 and 2050 targets.

Table 5. Adaptations of EPIC to Re: Fit

Action relevance to INTENSIFY

The Re: Fit project satisfies the INTENSIFY requirement for new projects to bring down CO2 emissions faster than business as usual. This initiative will make a positive contribution to the Milton Keynes aim to reduce carbon emissions to net zero by 2030 as outlined in the 2019 -2050 Sustainability Strategy, the updated version of the Milton Keynes low carbon living strategy. Progress will be monitored through bi-annual assessment of energy saving using the conversion factors in Table 3,

Another INTENSIFY action is to include citizens in reducing carbon emissions. Working with MK citizens will be through awareness training of energy management in buildings and procurement policy reform will dictate work will be contracted to local tradespeople. More information on this policy reform is in the Policy section below.

Behaviour Change

MKC will work with local organisation Transition Town: MK and their associated partners; Citizens: MK. Planning of community events started during the spring and summer of 2021. These events will

be collaborations with environmental groups and charities supported by a co-ordinated social media campaign.

The social media campaign is being planned with stakeholders from Transition Town: MK and colleagues from the MKC Culture Team. Initial ideas are for the campaign to be developed along similar lines to the #MuseumCarbonStories working with MK Museum. There is an events space at the museum and a popular café for when physical meetings are permissible, hopefully in the spring months of 2022.

Training on energy management will be planned with stakeholders at MK College and will align with their skills training courses on carbon literacy and energy management in Spring 2022. We expect project partners Engie to contribute to the awareness raising training.

Stakeholder	Role	Timescale
Transition Town: MK	Event planning and information sharing at exhibitions and open days. Co-ordinate with members on awareness raising and social media.	Planning in spring/summer 2021. Social media campaign autumn/ winter 2021/22
Citizens: MK	Co-ordinate with members on awareness raising and social media	Media Campaign autumn/winter 2021/22
Culture Team	Liaise with MK Museum to arrange events and media campaign.	Autumn/winter 2021/22
MK Museum	Host events, awareness raising to museum visitors and social media.	Spring 2022
ENGIE	Presentations at training events.	2022 and ongoing
Local Partnerships	Active role in training programme planning and deliver presentations.	2022 and ongoing
MK College	Devising training programme and hosting workshops and seminars.	Autumn/winter 2021/22

Table 6. Stakeholders in the Citizen engagement consortium

Policy

Local tradespeople will be contracted to work on the building upgrades which will satisfy an aim of the MK Sustainability Strategy Action Plan to provide local jobs. Alignment of the INTENSIFY RAP and MKC Policy will ensure the INTENSIFY Project lives on in the legacy of ongoing actions.

In later phases of the Re: Fit programme, the communities will benefit by having their homes made more comfortable and affordable. The community areas will be upgraded by improving the building fabric and heating systems. As these community centres and libraries become more comfortable and economical to heat, we expect more citizen groups will use the community buildings. All the group leaders using the buildings will be taught how to manage the heating and lighting to avoid wasting energy.

Energy management training will take place in the community centres and libraries to explain what work is planned and the expected benefits. There will also be advice on how to incorporate the ideas into domestic homes and sources of funding.

This behaviour change is an essential element of awareness raising to facilitate carbon reduction. Awareness raising is also present in the EPIC project in Treviso where students are encouraged to join innovation groups. Full understanding of the operation of the buildings will encourage efficient use of town and council buildings for public meetings and will also help citizens to understand energy management in their homes. These three elements of job creation, energy efficient refurbishment and awareness raising of sustainable use of energy will make a significant contribution to reducing carbon emissions and satisfy the aims of the INTENSIFY project.

2. Nature of the action

The MK version of Treviso's EPIC will be Re:Fit which is a collaboration of organisations working together to bring down the carbon emissions of the properties in the municipality's portfolio. Re:Fit will target the buildings with the highest energy use first as outlined in Table 2 on page 6. The consortium will establish a plan of work to bring all MKC buildings up to a higher standard of energy efficiency and reduce CO2 emissions through using less kWh of gas and electricity.

Citizens will be encouraged to engage in discussions on what work is being planned through meetings in their local community areas. These discussion groups will be followed by training opportunities with stakeholders MK College and MK Museum.

Citizen Engagement

MK Councillors have decided to use Built-ID to gather ideas and opinions from MK stakeholders. There will be a dedicated link to a survey on <https://www.built-id.com/>. The survey will have statements about sustainability in Milton Keynes with a slider bar for citizens to register their agreement or not. Specific questions and answers will provide justifications for council actions and budgets.

The MK INTENSIFY partners will be attending local events during the autumn of 2021 to talk to citizens and explain how results from the interactions on the Built-ID survey will inform and shape the ongoing policy reforms of MKC policies.

An INTENSIFY Conference will take place in central MK on the 10th November 2021. This event will be interactive with a series of ten short presentations from local leaders in business, transport and buildings who are stakeholders of INTENSIFY. There will be three workshops in the afternoon to find out how stakeholders have been inspired by the presentations in the morning.

MKC is using engagement ideas from Treviso's work with schools to inspire behaviour change. The Green School Project has been adapted to MK's Re:Fit programme training by providing webinars, workshops and training days. We will incorporate the student to student interactions that have worked very well in Treviso. Here we will see how MK College students can present their innovative ideas to MK citizens.

As in Treviso's EPIC Good Practice, carbon savings will be guaranteed by the external partners so reducing all risks of capital spending.

Carbon Reduction

The emission reduction target will be in CO₂e measured twice a year against previous kWh consumption for the corporate estate by April 2023. As with Treviso's EPIC, MKC will aim to maximise the use of natural resources and implement energy efficiency improvements across the portfolio of the council. As in Treviso, MK will:

- embrace innovation as new technologies become available
- create high quality jobs in the district of Milton Keynes in liaison with local colleges and universities
- Raise awareness and provide training on energy efficiency

Future phases

DSR

Demand side response (DSR) services and battery storage are in scope of Re:Fit and adopting these technologies will contribute to energy efficiency improvements that maintain internal temperature, air quality and lighting levels. DSR contributes to the stability of energy supply and reduces dependence on the national grid. For citizens, DSR will provide a sustainable comfortable and healthy internal environment to live and work.

Smart Meters

Smart meters are planned to allow citizens to see how their energy use affects their bills in real time. Automated meter reading along with building energy management and control systems allow for remote collection of meter readings so MKC can identify where energy is being wasted.

Low carbon technologies

Building fabric and service upgrades will be assessed for suitability of renewable energy and low carbon heat. Heat and power demand will be calculated before and after improvements to building fabric, roof and pipe insulation, glazing upgrades, IT solutions, draught proofing, automatic shutdowns of equipment on standby.

Lighting will be upgraded too with LED, PIR, fixture density, daylights sensing, dimming controls and sensors that will ensure lights are only lit when required.

Milton Keynes already produces over 176 GWh of renewable energy electricity from Photovoltaics, onshore wind, anaerobic digestion, municipal solid waste, sewage and landfill gas. Increased local

energy production will most likely be from Photovoltaic Solar Farms and gas from waste streams as the city population expands.

Developing the existing heat network and identifying new opportunities for heat networks will be investigated. Of particular interest is adding the Milton Keynes Hospital and Football Stadium into a heat network.

Contract renewal

Treviso's EPIC has been renewed four times and MKC also plans to keep the Re:Fit contract for four years with the option to renew after that. Re:Fit will deliver re-development of Council owned buildings to produce a future-proof low carbon infrastructure that will secure energy savings past the 2050 target.

Like the actions in Treviso's Energy Performance Integrated Contract (EPIC), Milton Keynes Council (MKC) is creating a structured work plan for the upgrades, management, maintenance and monitoring of MKC's building portfolio. Like Treviso, MKC will continually assess the success of this contract to ensure the energy efficiency targets are achieved and include any new opportunities for energy efficiency that arise due to changes in MKC infrastructure, government policy or national regulations.

The action plans for projects in both Treviso and Milton Keynes incorporate a mix of financial investment, innovative technological solutions and behaviour change through education and community learning. Educating the energy managers and users of each building is of vital importance as all users need to understand how the heating and cooling systems operate together by feedback sensors and intelligent interactions.

With this Re:Fit contract inspired by Treviso's EPIC, MKC aims to become a best practice leader in the UK as Treviso is in Italy.

3. Stakeholders involved

- **Local residents** – citizens will be encouraged to engage with the contractors to learn about the management of community heating and local energy production
- **Local businesses, educational establishments, housing associations, housing developers** – take part in the low carbon initiatives

The following table provides a list of stakeholders, their role in the project and the timescale.

Stakeholder	Role	Timescale
Politicians and MKC Directors	Approved the Re: Fit project proposal	Summer 2020
ENGIE	Identify where the greatest savings can be made and guarantee the savings. Process underway.	Summer 2020 to Summer 2025
Citizen Engagement (reproduced from Table 4 on page 8)		
Transition Town: MK	Event planning and information sharing at exhibitions and open days. Co-ordinate with members on awareness raising and social media.	Planning in spring/summer 2021. Social media campaign autumn/ winter 2021
Citizens: MK	Co-ordinate with members on awareness raising and social media	Media Campaign autumn/winter 2021
Culture Team	Liaise with MK Museum to arrange events and media campaign.	Autumn/winter 2021
MK Museum	Host events, awareness raising to museum visitors and social media.	Autumn 2021
ENGIE	Presentations at training events.	2022 and ongoing
Local Partnerships	Active role in training programme planning and deliver presentations.	2022 and ongoing
MK College	Devising training programme and hosting workshops and seminars.	Autumn/winter 2021/22

Table 7. INTENSIFY Stakeholders in the Re:Fit project, their roles and timeline.

4. Timeframe

The Re:Fit scheme will last 4 years from 2020 with the option to renew the contract in 4 years. Annual assessments will be in place to ensure targets remain achievable. Further details will be available during Phase II of the INTENSIFY Project.

5. Indicative Costs

Cost projections for phase 1 of Re:Fit are around €2m. Further phases will be assessed on completion of Phase 1. The investment for Phase 1 will produce CO2 reductions of more than 700 tonnes a year.

6. Indicative funding sources

Initial funding from sustainability budget and the MKC General Fund. There are opportunities to apply for grants from central government through the South East Energy Hub <https://www.energyhub.org.uk/> and the South East Midlands Enterprise Partnerships <https://www.semlep.com/>.

Action 2. Carbon and Energy Hub

1. Relevance to the project

Milton Keynes Council (MKC) declared a climate emergency in January 2020 and has made a commitment to become carbon neutral by 2030 and net zero by 2050. The Council cannot meet these carbon reduction targets alone; we will need MK partners and citizens to make changes to the way we all use energy in our homes and at work. MKC has a programme of work to decarbonise heat, install PV and refurbish buildings but we need partnerships with communities, organisations and individual citizens to help deliver low carbon projects.

Reducing carbon emissions is the main aim of the Sustainability Strategy Action Plan (SSAP). INTENSIFY aims to reduce carbon emissions through engaging with citizens.

The SSAP replaced the Milton Keynes Low Carbon Strategy in 2021, as discussed in the Policy Context on page 4 of this RAP. Reducing carbon by working with communities is the primary aim of the INTENSIFY project. The Carbon and Energy Hub is an ideal tool to create collaboration and deliver carbon reduction actions with community engagement.

We will be taking inspiration from ENERGAP partner's Good Practice 'Energy Educational and Advisory Service Centre in the Upper Podravje Region. They have developed a range of educational and promotional materials that would be useful for when we attend events after Covid safety guidelines are relaxed. Our main stakeholder for citizen engagement has a teacher who we will be working with. He already makes seed bombs for children and will be great at creating interesting working models for the displays. Also we are finding out more from our INTENSIFY partner Rolf Hennig, EAA on his Energy Game- the energy transition role play-off Energieavantgarde.

2. Nature of the action

The Carbon and Energy Hub will deliver six of seventy-five aims of the Milton Keynes SSAP referenced in the Table 6 below.

INTENSIFY RAP Action	MKC Action	SSAP Ref	Activity Stage
Action 2. Carbon and Energy Hub	Provide energy transition advice to individuals, organisations and businesses	13	2020-2022
	Mobilise a Carbon and Energy Hub to facilitate and accelerate energy generation and carbon reduction opportunities	23	2020 onwards
	Establish a dedicated web and social media presence to provide information and news in support of ambitions for a carbon neutral Milton Keynes.	50	2022 onwards

	Establish or support the establishment of a climate change advice service for businesses and citizens.	51	2022 onwards
	Establish a Climate Change Partnership to include a wide range of organisations in the public, private and voluntary sectors to work together to achieve a carbon neutral MK by 2030.	75	2021 onwards

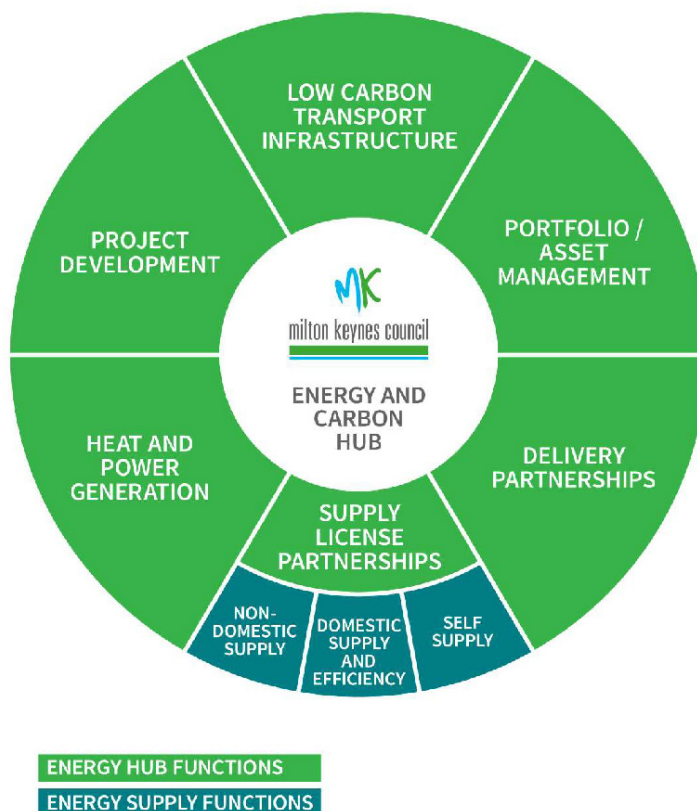
Table 8. Action 2 details (adapted from Table 1 on page 5 of this RAP)

Milton Keynes has a programme of work that will deliver the aims in the SSAP. The programme consists of :

- Re: fit Contract (described in Action 1 above)
- Heat decarbonisation
- Large Scale PV options
- Community engagement

We expect at least 10% improvement CO₂e reduction on figures for the previous year by implementing the actions in Table 8. Figures will be checked bi annually in June and December to assess progress. Where figures are below expectations, we will focus on actions that will bring the savings back to the predicted level of 10%. These actions will be made during the officer working hours paid for by Milton Keynes Council.

The Carbon and Energy Hub is where all projects are explained so citizens can discover what work is planned to meet carbon neutral and net zero targets in 2030 and 2050 respectively. The projects are identified in the diagram below.



The Hub will also serve to facilitate and accelerate investment and delivery of the Milton Keynes energy projects.

Citizen Engagement

Citizen engagement was planned to be a citizens assembly but the MKC Councillors have decided knowledge exchange now needs to be on line. A survey has been organised with Built ID. This engagement consists of questions that will generate answers. The answers will provide justification of actions and the citizens opinions will be a major factor for generating budgets.

During autumn and winter 2021 there will be a dedicated link to a survey on <https://www.built-id.com/give-my-view> promoted on MKC social media and the MKC website www.Milton-Keynes.gov.uk. The survey will be gathering opinions about sustainability policy in Milton Keynes with optional emoji expressions on how citizens view the ideas and plans. The answers will be used to guide MKC actions and budgets.

When the Covid-19 rules are relaxed, the MK INTENSIFY partners will be attending local events. These events will be in conjunction with INTENSIFY stakeholders Transition Town. We will use the events to explain the INTENSIFY aims and how their opinions can influence MKC decisions if they take part in the Built-ID survey.

The survey carried out at the start of the INTENSIFY project assessed citizen's attitude to reducing carbon and water. The same survey will be repeated with the same respondents during the closing phases of the INTENSIFY project. It is expected that the 10% CO₂e reduction aim will be exceeded due to an INTENSIFY Conference in central MK on the 10th November 2021 and the increased media attention on climate change coverage of the COP 26. The Milton Keynes Conference on November 10 will have good promotional opportunities as it takes place during COP26 <https://ukcop26.org/>. This MK INTENSIFY event aims to be fully interactive and we expect suggestions from citizens of how they plan to reduce their individual and organisation carbon footprints. We are expecting some valuable ideas and feedback from the afternoon workshops which in turn will help co-operation between partners and citizens on carbon reduction initiatives.

A dedicated Conference web site will be functioning in early November and a full report on the Conference will be provided to the project managers during December 2021.

3. Stakeholders involved

Energy and Carbon Hub stakeholders, their roles and timescale are listed in Table 7 below.

Stakeholder	Role	Timescale
MKC Environment and Property Director	Member of the Carbon and Energy Hub Board	Commenced July 2021

EA to Environment and Property Director	Member of the Carbon and Energy Hub Board	Commenced July 2021
MKC Head of Regulatory Services	Member of the Carbon and Energy Hub Board	Commenced July 2021
MKC Sustainability Team Manager (and INTENSIFY Partner)	Member of the Carbon and Energy Hub Board	Commenced July 2021
MKC Digital Communications Manager	Member of the Carbon and Energy Hub Board	Commenced July 2021
MKC Head of Finance	Member of the Carbon and Energy Hub Board	Commenced July 2021
MKC Head of Portfolio Office	Member of the Carbon and Energy Hub Board	Commenced July 2021
Local Partnerships Re: Fit Programme Director	Member of the Carbon and Energy Hub Board	Commenced July 2021
Local Partnerships Project Manager	Member of the Carbon and Energy Hub Board	Commenced July 2021
Citizen groups	Role/ further Information	Timescale
The MK UN SDG Meet Up Group	Members include sustainability officers from large organisations based in MK, representatives of community groups and individual citizens. There are discussions and suggestions during the meetings and the main points are summarised at the end of session.	Commencing November 2021
Transition Town: MK	Event planning, sharing information stands at exhibitions and open days and social media co-ordination.	Commenced winter 2020
Citizens who have responded to consultations on sustainability and biodiversity	Over the last two years MKC has managed two Task and Finish groups on these topics. Task and Finish groups work with Scrutiny Committees to challenge Cabinet decision and suggest ways to improve policies with decisions that are in the best interests of citizens. Both the Task and Finish groups and Scrutiny Committees are led by MKC Councillors.	Commenced November 2019
Milton Keynes Youth Cabinet	This lively proactive group of students are keen to promote sustainability and reducing carbon. In mid-September 2020 they produced their own climate change awareness video which we has been uploaded to the INTENSIFY You Tube channel.	Commenced early 2021

Neighbourhood Groups and Parish Councils	These groups can disseminate information to local interested citizens and form their own discussion groups, liaison committees and active groups.	Commenced November 2021
Environmental Groups and Charities	These groups have valuable experience of creating low carbon projects and are always willing to attend events that promote energy efficiency and renewable energy in Milton Keynes.	Commencing November 2021

Table 9. The Energy and Carbon Hub stakeholders, their roles and timescale

4 Timeframe

The initial meeting of the Carbon and Energy Hub was in July 2021 which determined the formal Terms of Reference. In September 2021 the full board met to discuss current status of projects and the next steps. The board will then meet every 8 weeks.

The Carbon Action Hub will be brought into existence during the extended Phase I of the INTENSIFY project and will remain in place throughout Phase II and beyond, becoming a legacy of the INTENSIFY project in Milton Keynes.

Citizen engagement plans are discussed at weekly Monday meetings with Transition Town: MK. These meetings started in April during the planning of a poster competition for 'Imagine MK in 2030'. The competition collaboration was a great success and we have continued meeting to plan the awareness campaign for MKC low carbon projects. A series of events are planned for Autumn 2021 to coincide with COP26 awareness where we will share information on what is happening in Milton Keynes that will help to make it a green city by 2030.

5 Indicative Costs

Planning costs were partially supported by the INTENSIFY project paying for Officer time. Implementation and managing the Hub will be paid for by the Milton Keynes Council general fund. The total costs are estimated to be in the region of €30 million. More information will be available on the costs during Phase II of the INTENSIFY project.

6 Indicative funding sources

The Milton Keynes Council General Fund will support the Energy and Carbon Hub actions along with applications for external funding from central government from the following schemes:

- Public Sector Decarbonisation Scheme (PSDS)
<https://www.gov.uk/government/collections/public-sector-decarbonisation-scheme>
- Sustainable warmth

<https://www.gov.uk/government/publications/sustainable-warmth-protecting-vulnerable-households-in-england>

- BEIS Heat Investment Vehicle (BHIVE)

<https://www.gov.uk/government/publications/beis-heat-investment-vehicle-bhive-a-dynamic-purchasing-system-for-heat-networks>

- Heat Networks Delivery Unit (HNDU)

<https://www.gov.uk/guidance/heat-networks-delivery-unit>

- Green Heat Network Fund (GHNF)

<https://www.gov.uk/government/publications/green-heat-network-fund-ghnf-transition-scheme>

- Social Housing Decarbonisation Funding (SHDF)

<https://www.gov.uk/government/publications/social-housing-decarbonisation-fund/social-housing-decarbonisation-fund-questions-and-answers>

- Electric Vehicle (EV) funding

<https://www.gov.uk/government/collections/government-grants-for-low-emission-vehicles>

Date: 05 November 2021

Name of the organisation: Milton Keynes Council

Signature of the representative of the relevant organisation



.....

Jeremy Draper

Sustainability Team Leader, Milton Keynes Council

The INTENSIFY Project Team
Milton Keynes Council
Carbon@Milton-Keynes.gov.uk
+ 44 7827 309436

