

Kolarctic CBC – Project KO4178; Conserving our Atlantic salmon as a sustainable resource for people in the North; fisheries and conservation in the context of growing threats and a changing environment.

## **REPORT XIV. Daily bag net and bend net catches and cumulative catches for three size groups of salmon in the municipalities Tana, Gamvik and Berlevåg.**

Niemelä<sup>1,2</sup>, E., Hassinen<sup>1,2</sup>, E., Høstmark<sup>3</sup>, M.S., Kalske<sup>3</sup>, T.H.,

<sup>1)</sup> Biodiversity Unit, University of Turku; Turku, Finland

<sup>2)</sup> Firm Olli van der Meer; Oulu; Finland

<sup>3)</sup> County Governor of Troms and Finnmark; Vadsø, Norway



Co-funded by the  
European Union

Statsforvalteren i Troms og Finnmark PB 700, 9815 VADSØ <a href="http://www.statsforvalteren/troms-finnmark/">www.statsforvalteren/troms-finnmark/</a>  CoASal – KO4178 project	ISBN 978-82-94021-13-0 Date: 31.1.2023
REPORT XIV. Daily bag net and bend net catches and cumulative catches for three size groups of salmon in the municipalities Tana, Gamvik and Berlevåg.  Niemelä <sup>1,2</sup> , E., Hassinen <sup>1,2</sup> , E., Høstmark <sup>3</sup> , M.S., Kalske <sup>3</sup> , T.H.,  <sup>1)</sup> Biodiversity Unit, University of Turku; Turku, Finland <sup>2)</sup> Firm Olli van der Meer; Oulu; Finland <sup>3)</sup> County Governor of Troms and Finnmark; Vadsø, Norway	
<b>Abstract</b> Salmon is caught in three municipalities in Tanafjord. Gamvik and Berlevåg municipalities are located on the outer part of the fjord. Gamvik is on the western side and Berlevåg on the eastern side in the Tanafjord. Tana municipality is on the inner part of the fjord. Cumulative bend net catches indicate that small salmon, and large salmon in some years, is usually caught earlier in Gamvik municipality than in Tana municipality.	
<b>Key words:</b> Daily catches, bag net, bend net, Atlantic salmon, Salmo salar, cumulative catches, Tana, Gamvik, Berlevåg	
<b>Front page photo:</b> Eero Niemelä	

## Content

1. Daily salmon catches in bag net fishery in Tanafjord, Tana municipality. ....	4
2. Daily salmon catches in bend net fishery in Tanafjord, Tana municipality .....	6
3. Daily salmon catches in bag net fishery in in Tanafjord, Gamvik municipality .....	8
4. Daily salmon catches in bend net fishery in Tanafjord, Gamvik municipality.....	12
5. Daily salmon catches in bag net fishery in Tanafjord-Kongsfjord, Berlevåg municipality.....	16
6. Daily salmon catches in bend net fishery in Tanafjord-Kongsfjord, Berlevåg municipality .....	20
7. Cumulative catches in bag net fisheries from the numbers of salmon caught in Tanafjord (Tana, Gamvik, and Berlevåg municipalities) and Kongsfjord (Berlevåg municipality).....	24
8. Cumulative catches in bend net fisheries from the numbers of salmon caught in Tanafjord (Tana, Gamvik, and Berlevåg municipalities) and Kongsfjord (Berlevåg municipality).....	26

# 1. Daily salmon catches in bag net fishery in Tanafjord, Tana municipality.

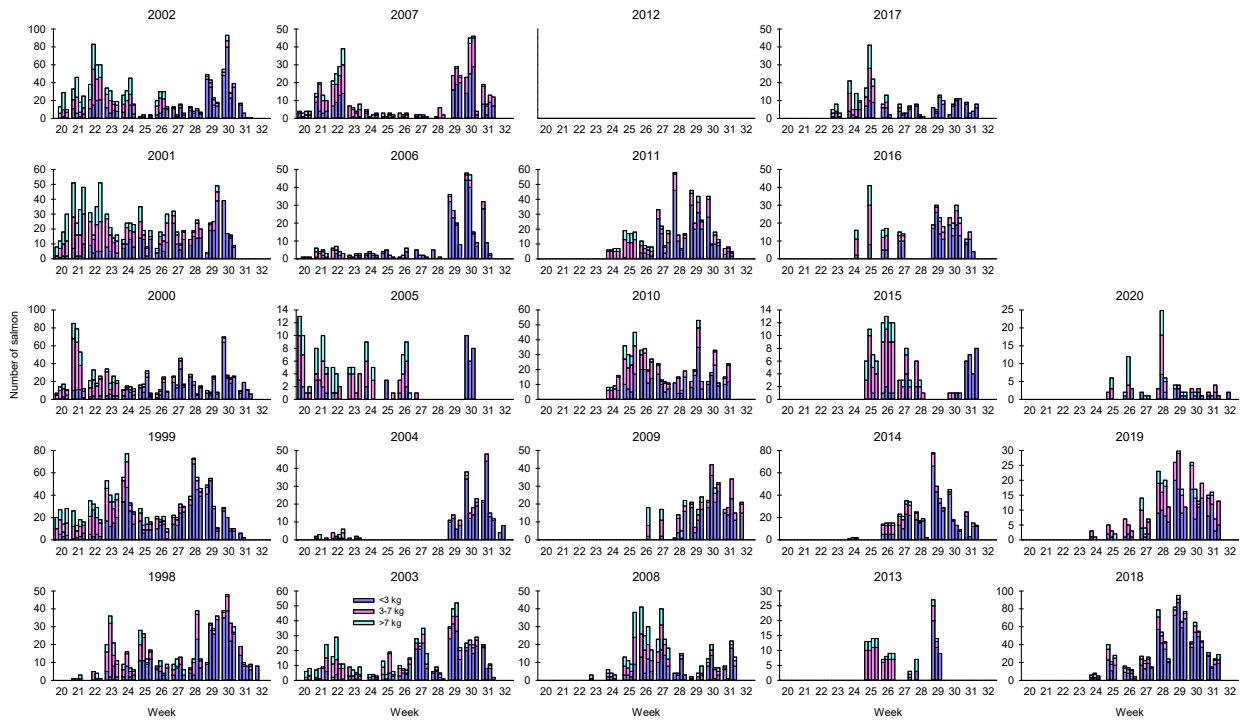


Figure 1. Daily salmon catches (numbers of fish in three size groups) in bag net fishery in Tanafjord, Tana municipality. Source; SSB (Norway).

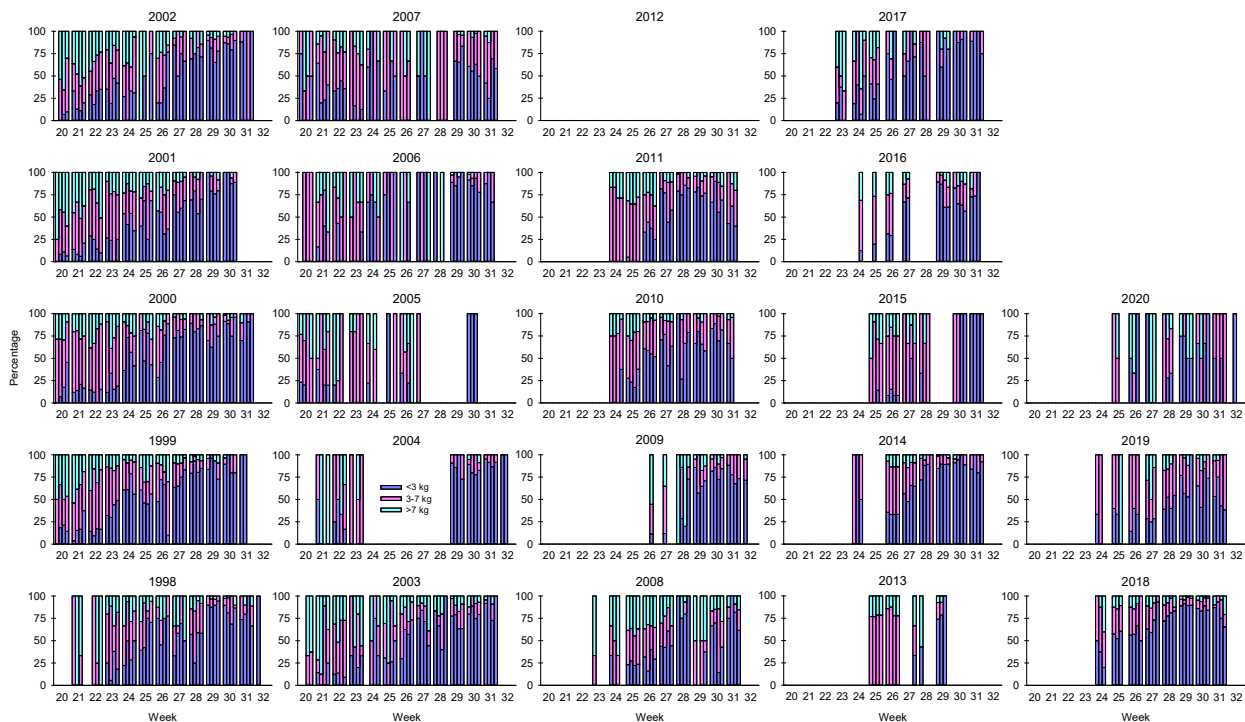


Figure 2. Daily salmon catches (percentages from the numbers of fish in three size groups) in bag net fishery in Tanafjord, Tana municipality. Source; SSB (Norway).

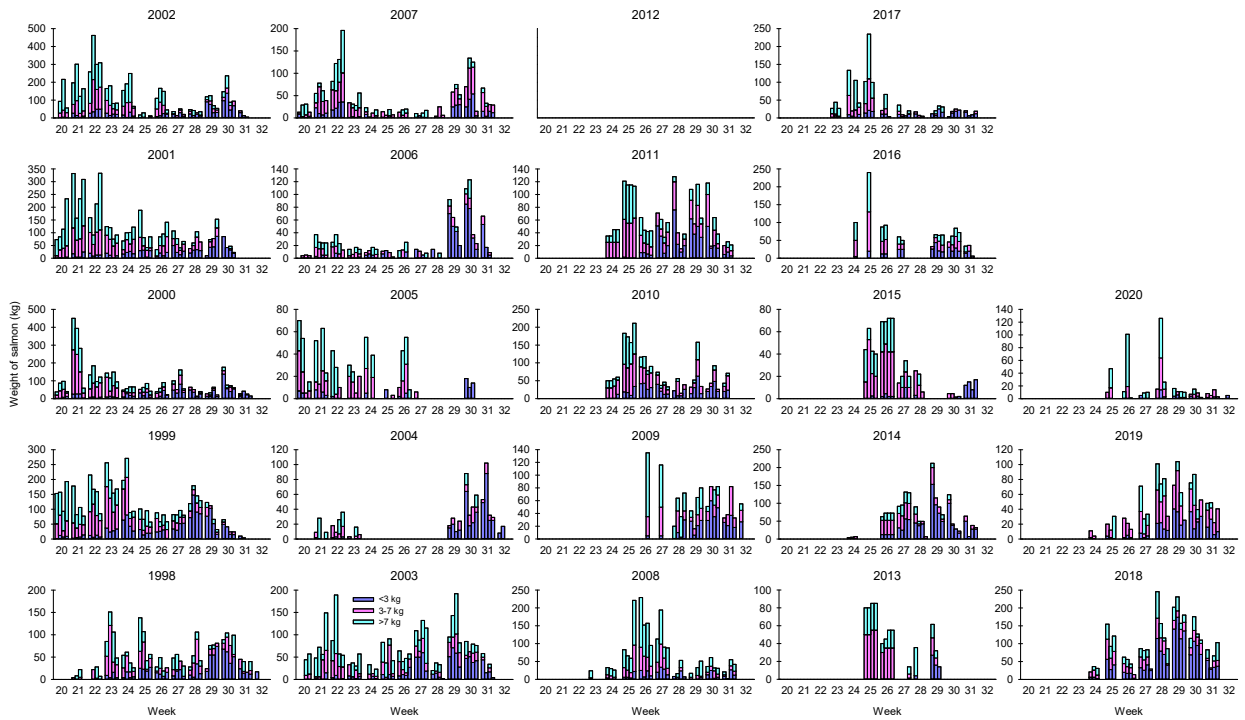


Figure 3. Daily salmon catches (weights of fish in three size groups) in bag net fishery in Tanafjord ,Tana municipality. Source; SSB (Norway).

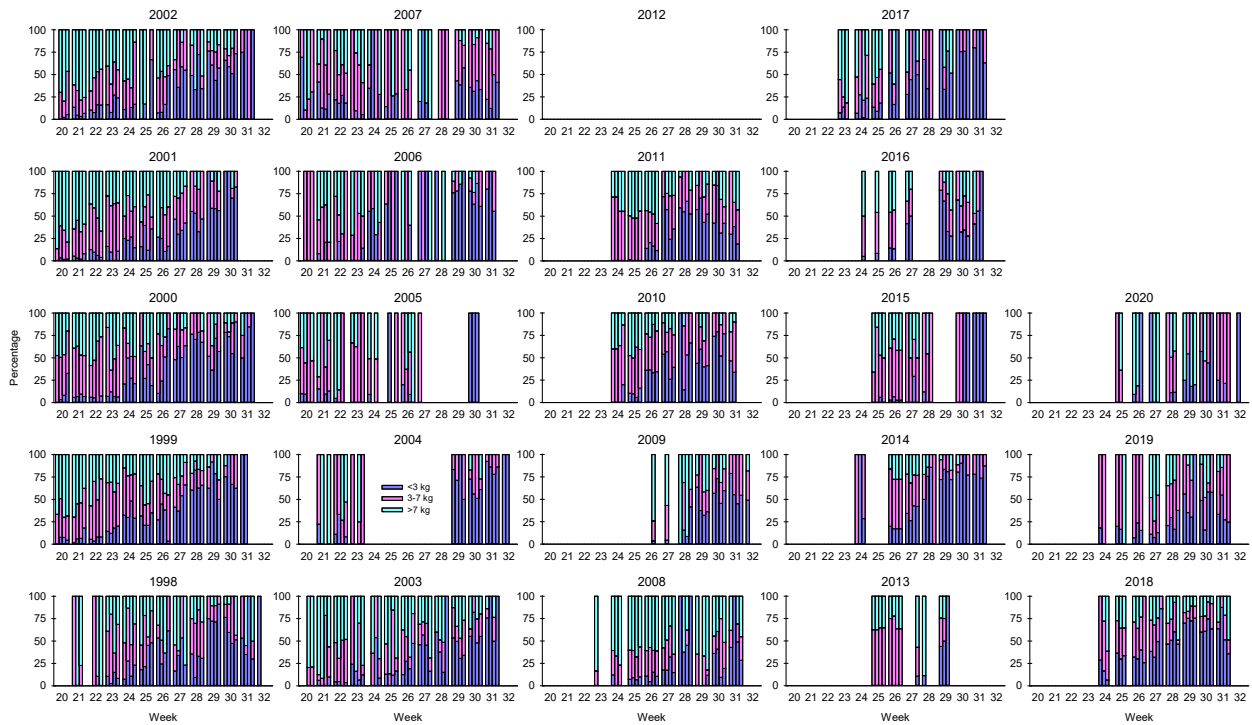


Figure 4. Daily salmon catches (percentages from the weights of fish in three size groups) in bag net fishery in Tanafjord, Tana municipality. Source; SSB (Norway).

## 2. Daily salmon catches in bend net fishery in Tanafjord, Tana municipality

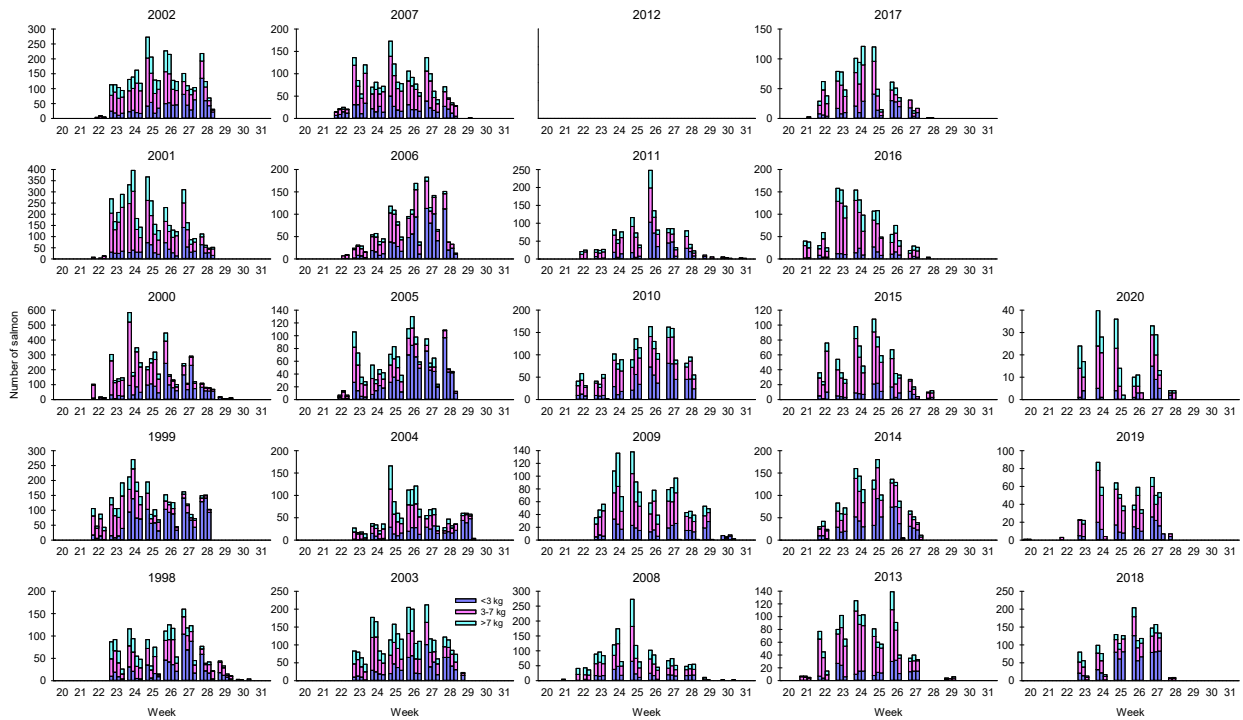


Figure 5. Daily salmon catches (numbers of fish in three size groups) in bend net fishery in Tanafjord, Tana municipality. Source; SSB (Norway).

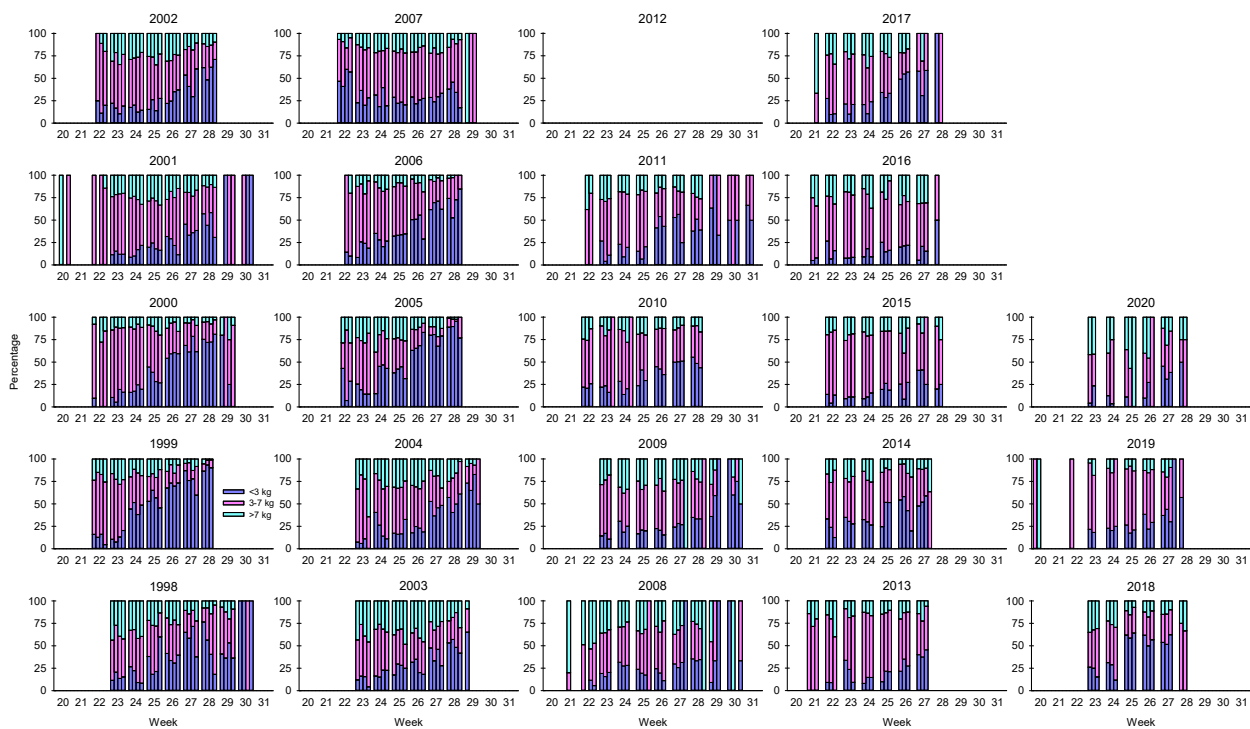


Figure 6. Daily salmon catches (percentages from the numbers of fish in three size groups) in bend net fishery in Tanafjord, Tana municipality. Source; SSB (Norway).

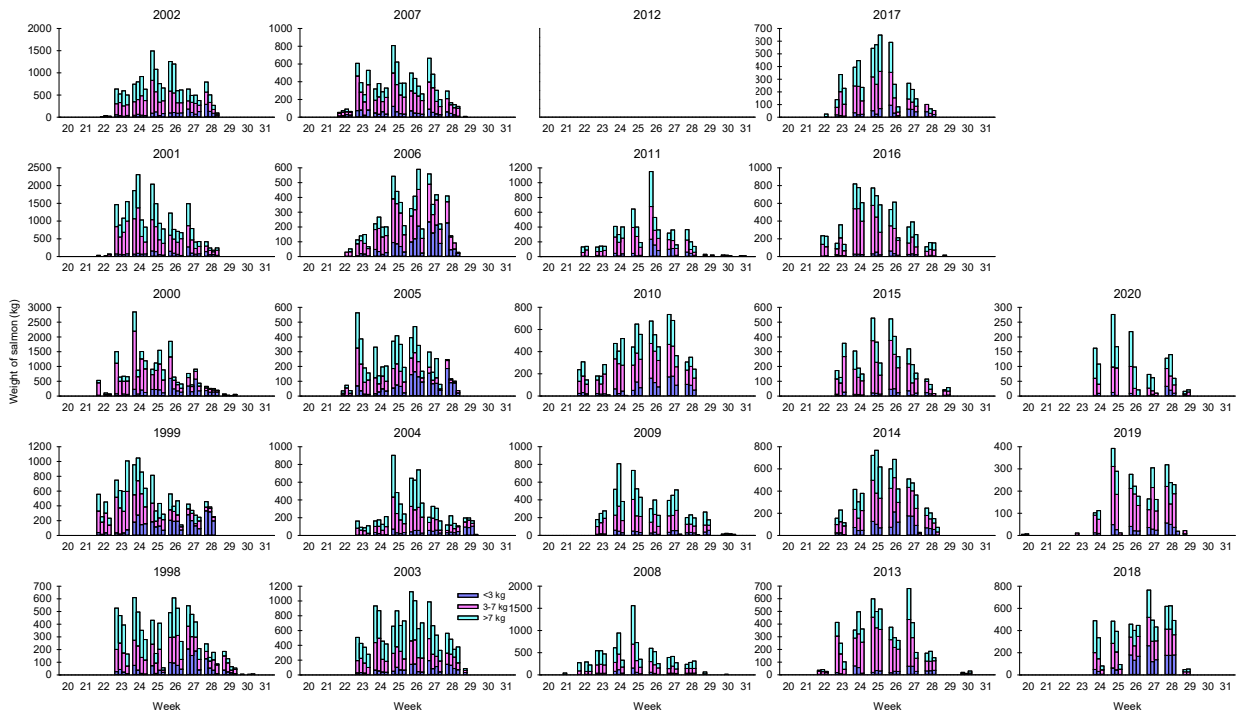


Figure 7. Daily salmon catches (weights of fish in three size groups) in bend net fishery in Tanafjord, Tana municipality. Source; SSB (Norway).

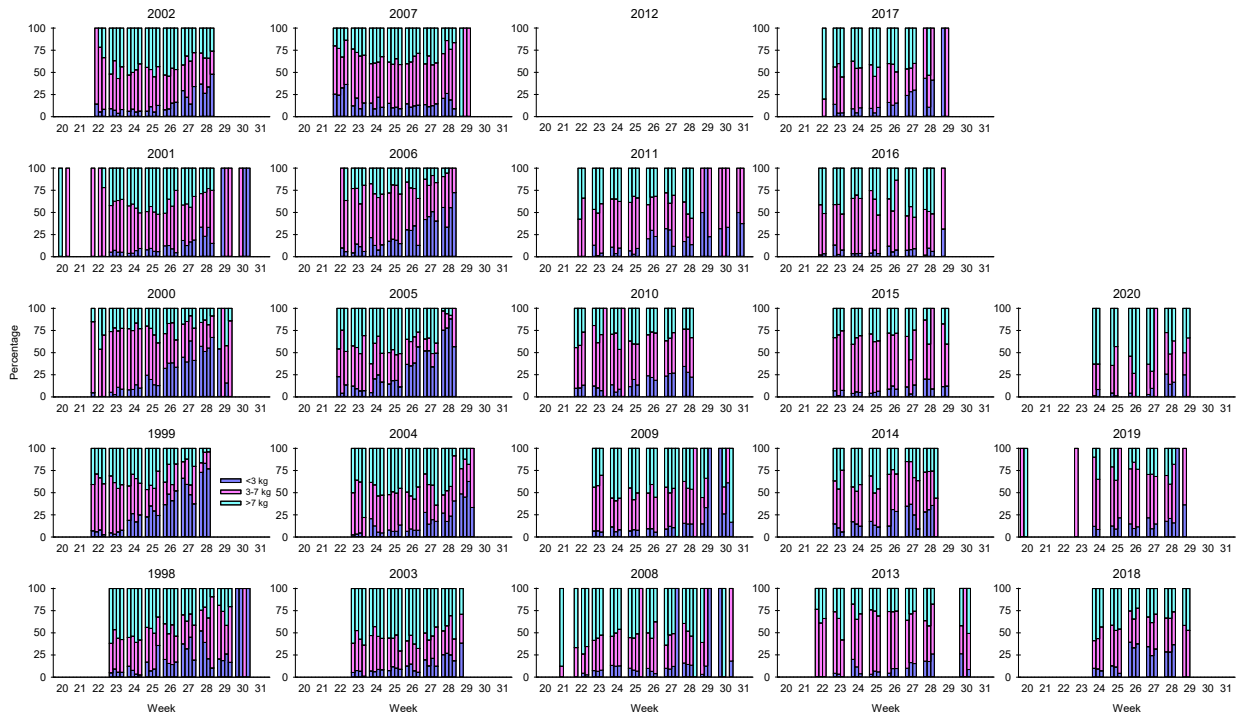


Figure 8. Daily salmon catches (percentages from the weights of fish in three size groups) in bend net fishery in Tanafjord, Tana municipality. Source; SSB (Norway).

### 3. Daily salmon catches in bag net fishery in in Tanafjord, Gamvik municipality

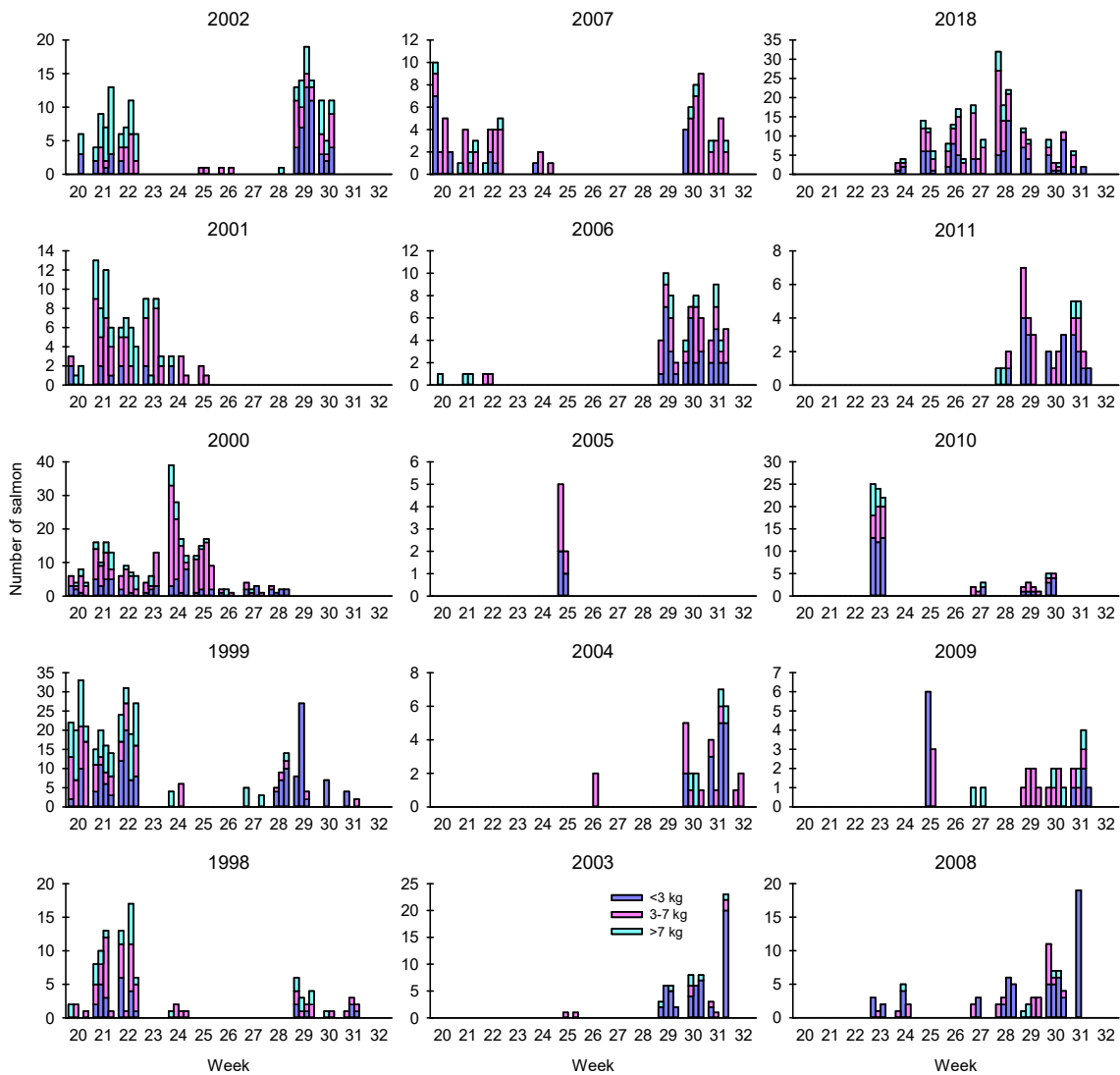


Figure 9. Daily salmon catches (numbers of fish in three size groups) in bag net fishery in Tanafjord, Gamvik municipality. Source; SSB (Norway).



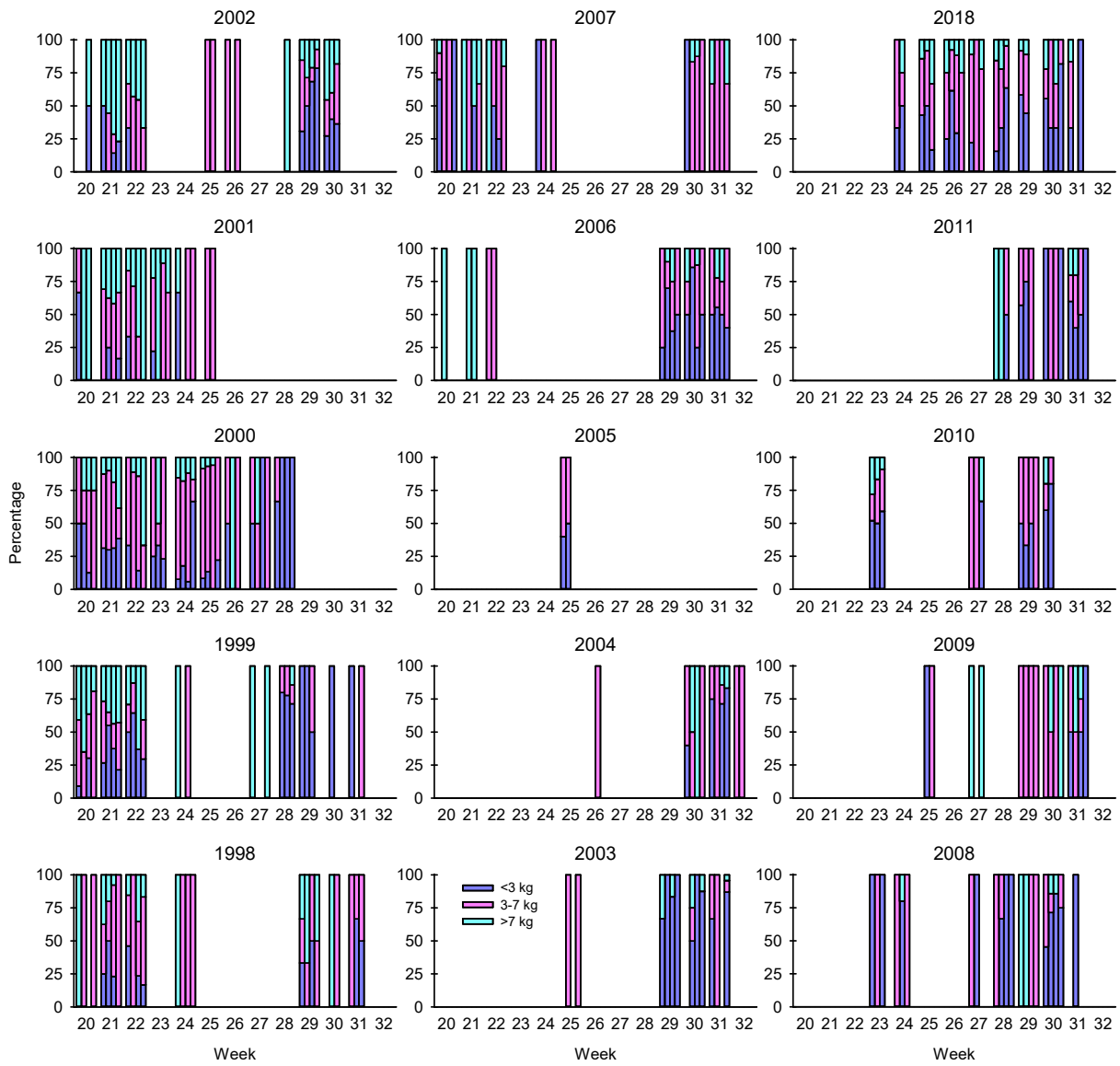


Figure 10. Daily salmon catches (percentages from the numbers fish in three size groups) in bag net fishery in Tanafjord, Gamvik municipality. Source; SSB (Norway).

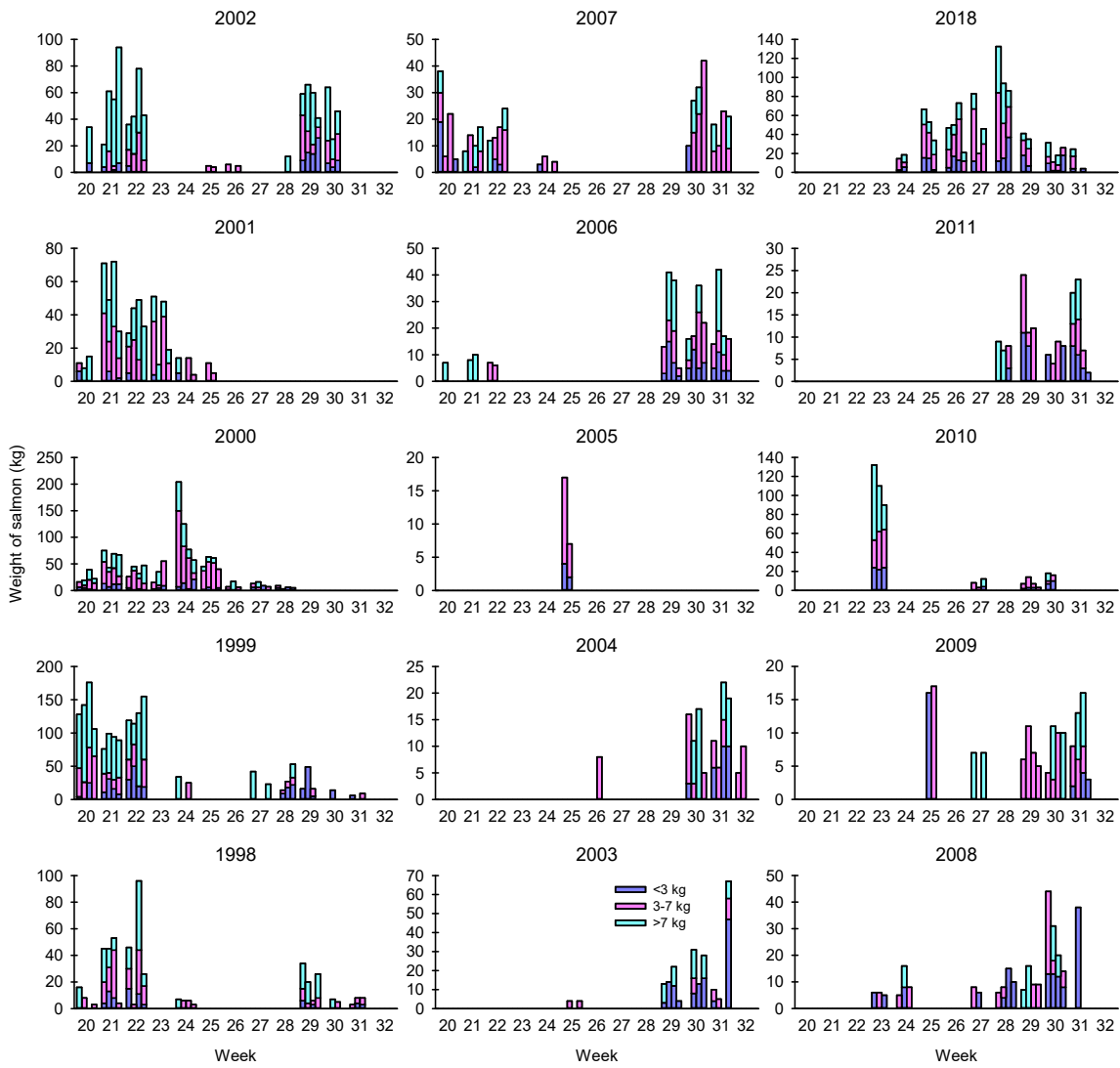


Figure 11. Daily salmon catches (weights of fish in three size groups) in bag net fishery in Tanafjord, Gamvik municipality. Source; SSB (Norway).

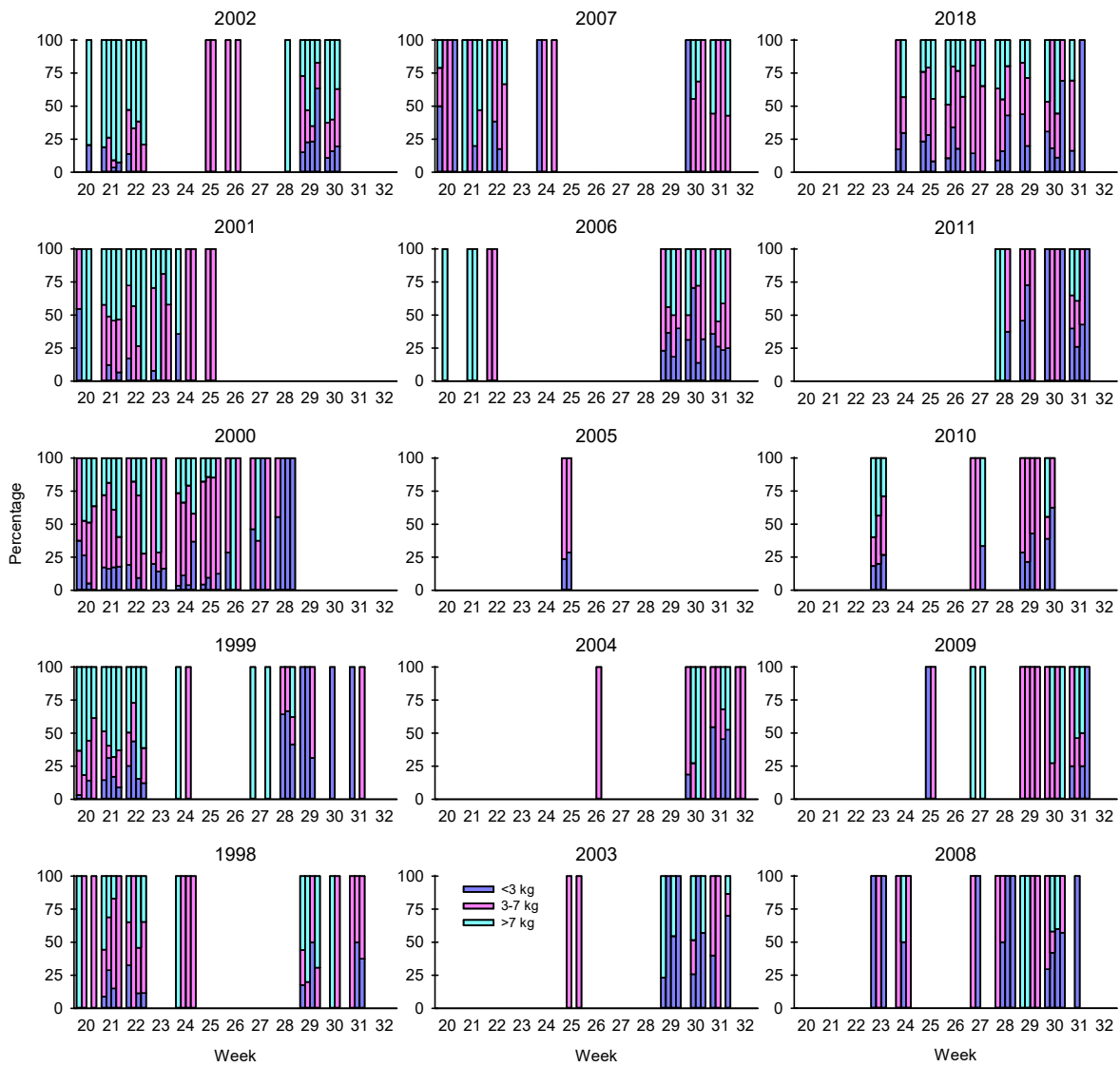


Figure 12. Daily salmon catches (percentages from the weights of fish in three size groups) in bag net fishery in Tanafjord, Gamvik municipality. Source; SSB (Norway).

## 4. Daily salmon catches in bend net fishery in Tanafjord, Gamvik municipality

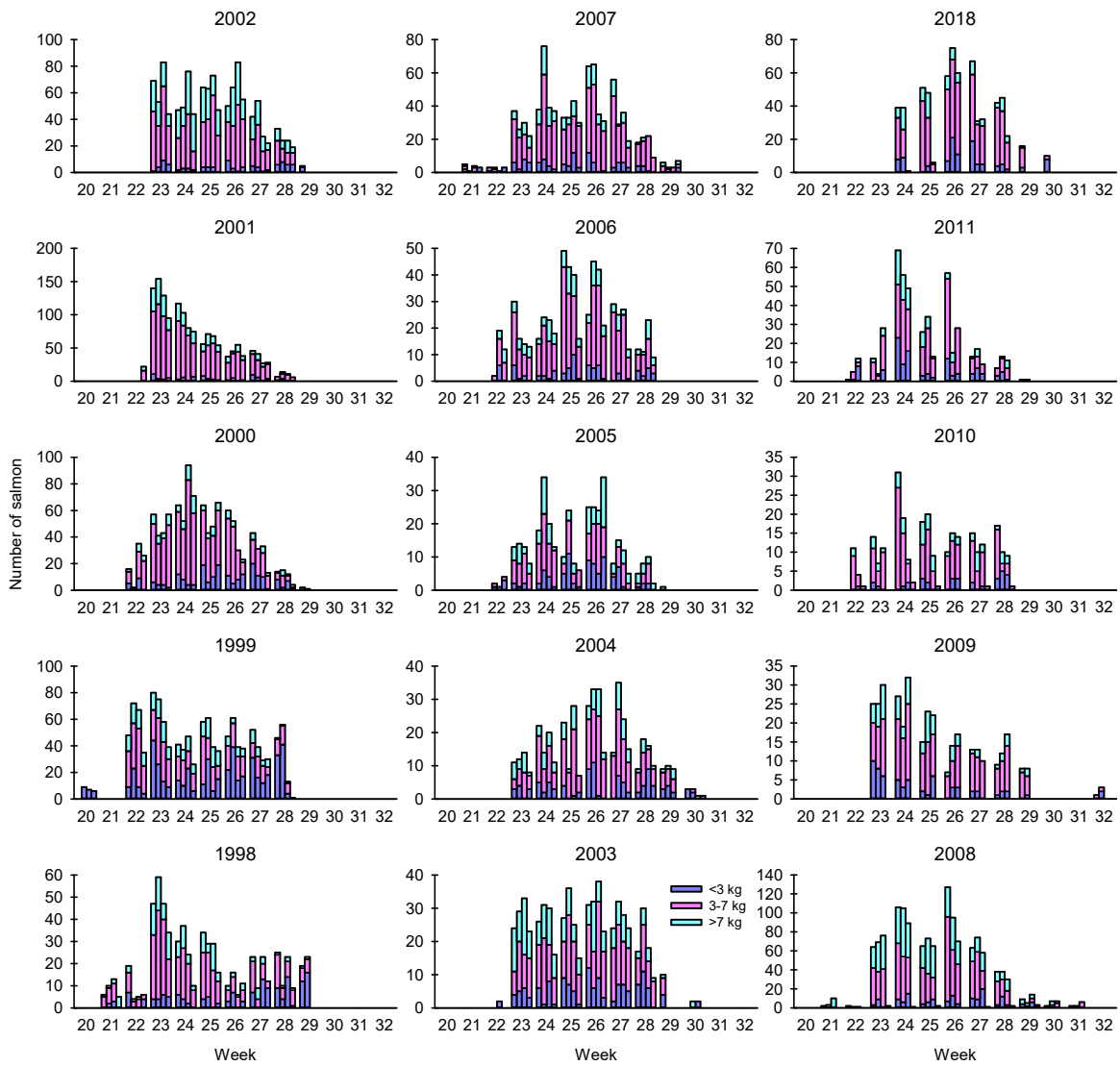


Figure 13. Daily salmon catches (numbers of fish in three size groups) in bend net fishery in Tanafjord, Gamvik municipality. Source; SSB (Norway).

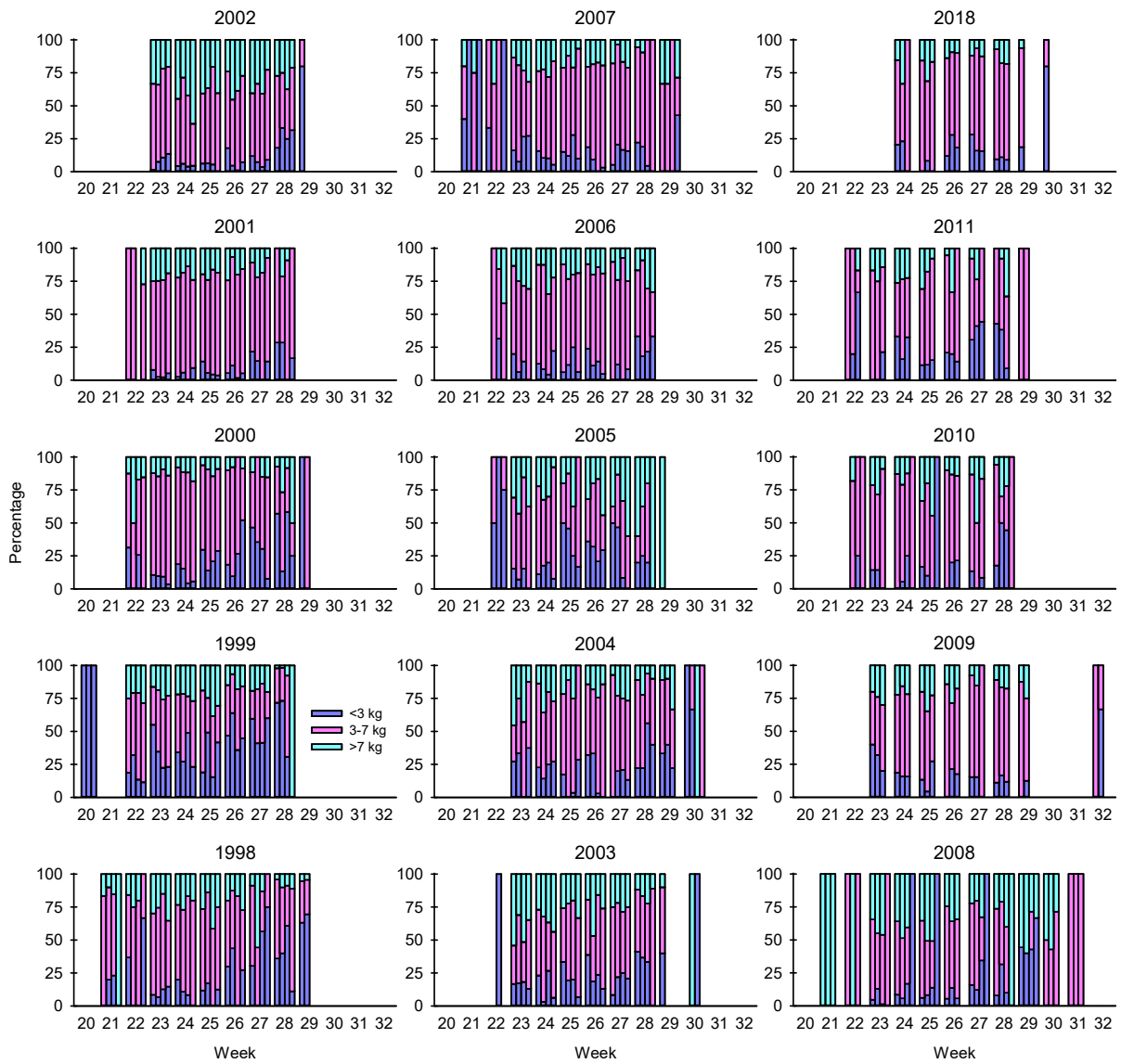


Figure 14. Daily salmon catches (percentages from the numbers of fish in three size groups) in bend net fishery in Tanafjord, Gamvik municipality. Source; SSB (Norway).

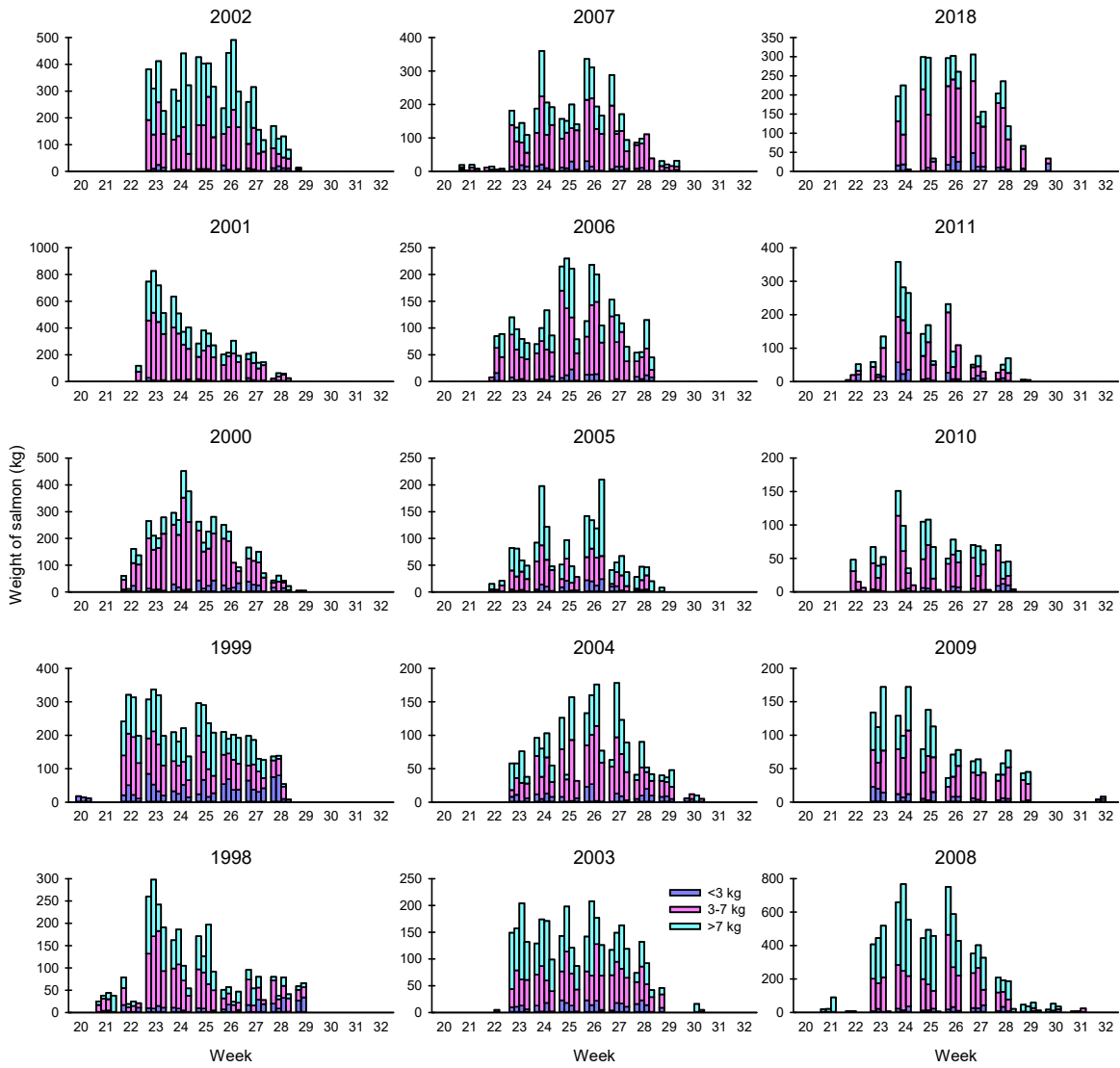


Figure 15. Daily salmon catches (weights of fish in three size groups) in bend net fishery in Tanafjord, Gamvik municipality. Source; SSB (Norway).

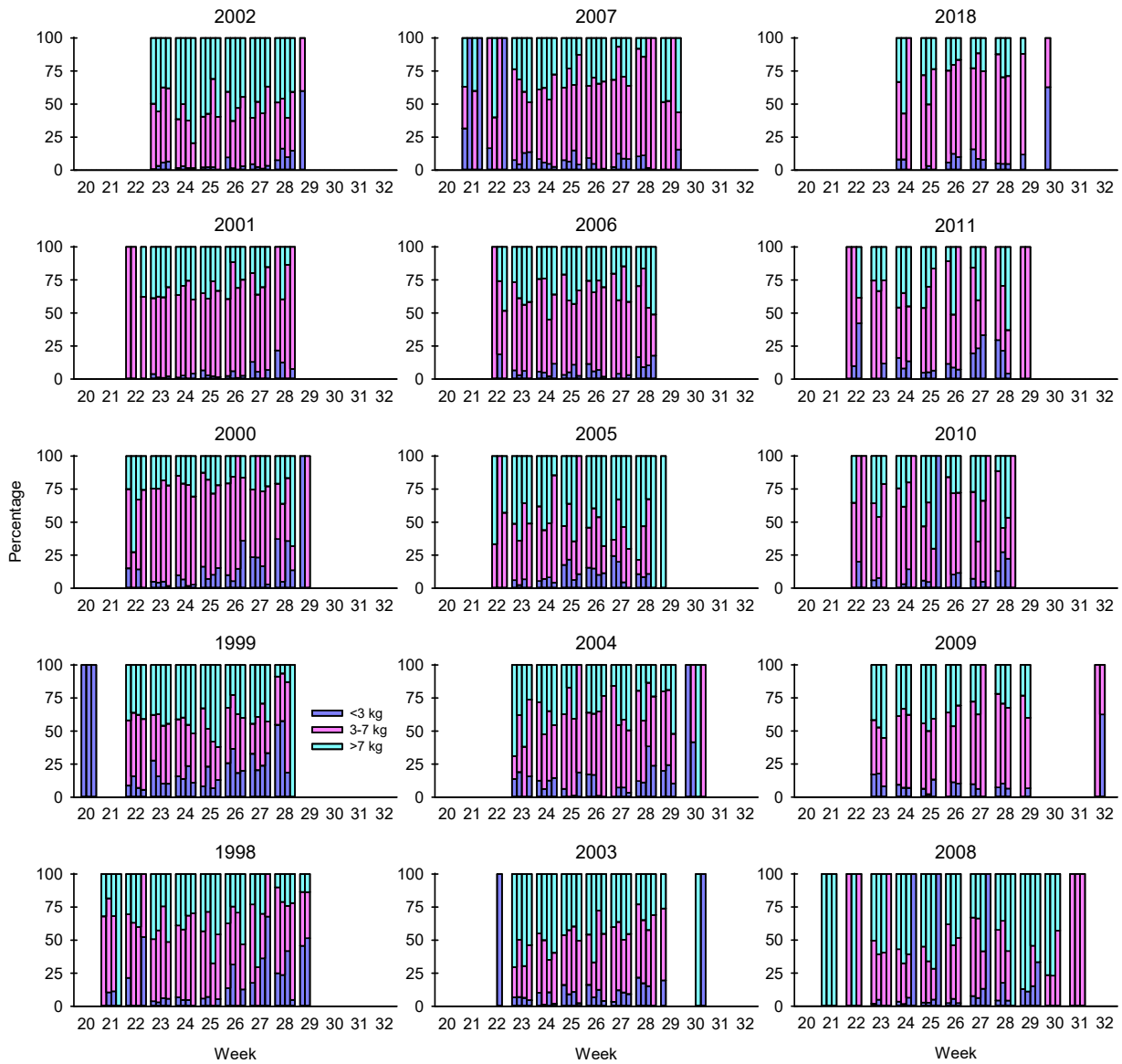


Figure 16. Daily salmon catches (percentages from the weights of fish in three size groups) in bend net fishery in Tanafjord, Gamvik municipality. Source; SSB (Norway).

## 5. Daily salmon catches in bag net fishery in Tanafjord-Kongsfjord, Berlevåg municipality

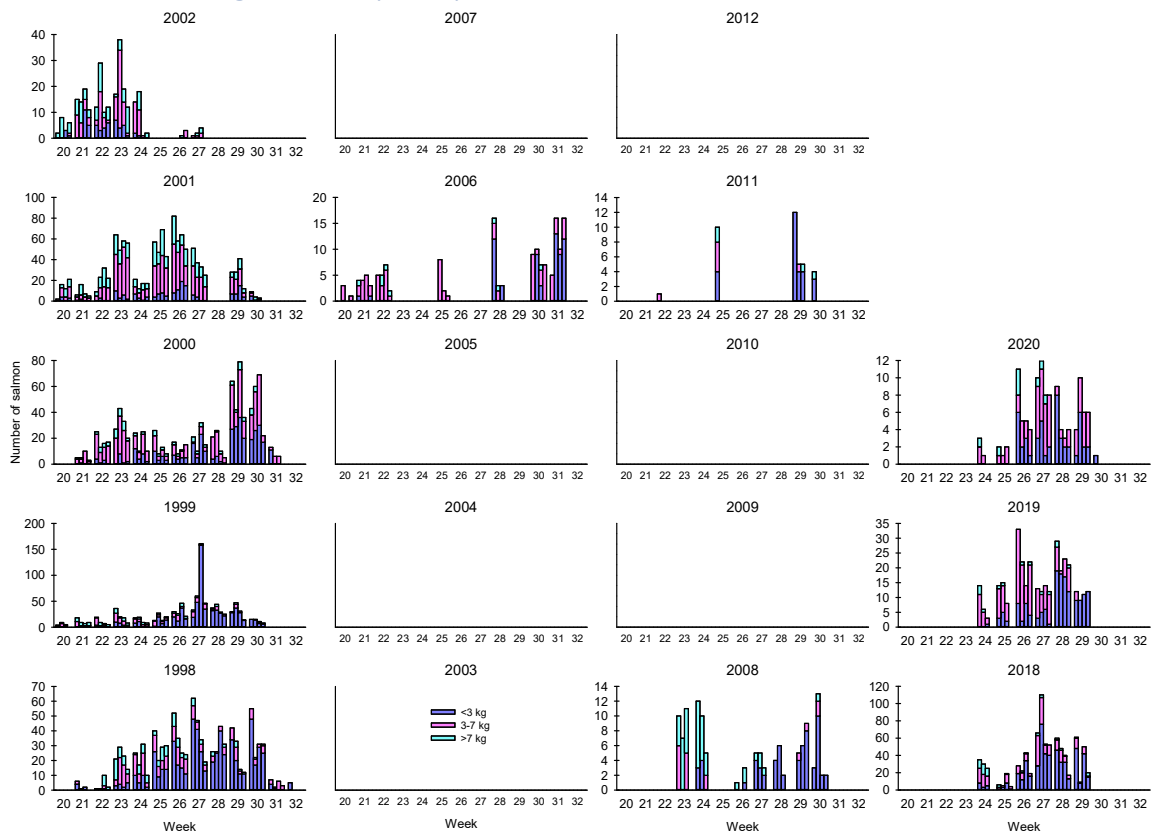


Figure 17. Daily salmon catches (numbers of fish in three size groups) in bag net fishery in Tanafjord -Kongsfjord, Berlevåg municipality. Source; SSB (Norway).



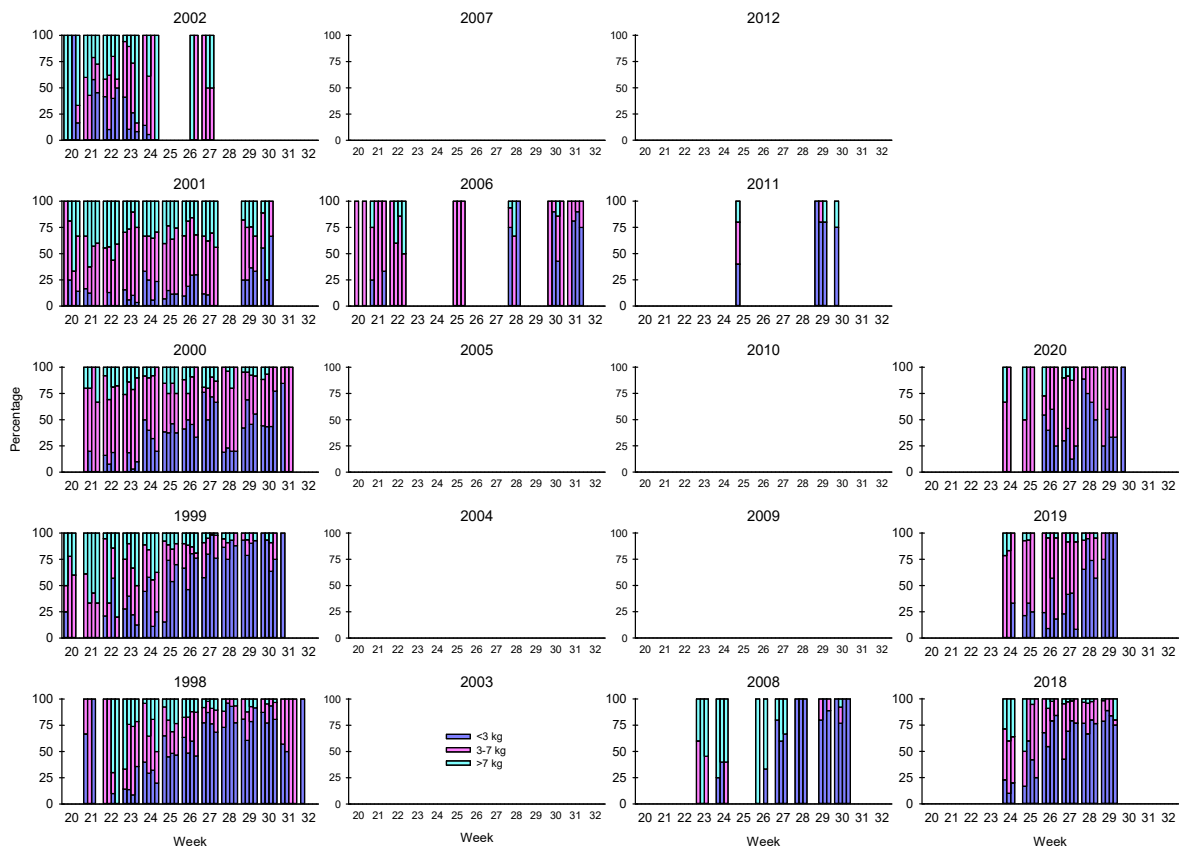


Figure 18. Daily salmon catches (percentages from the numbers of fish in three size groups) in bag net fishery in Tanafjord -Kongsfjord, Berlevåg municipality. Source; SSB (Norway).

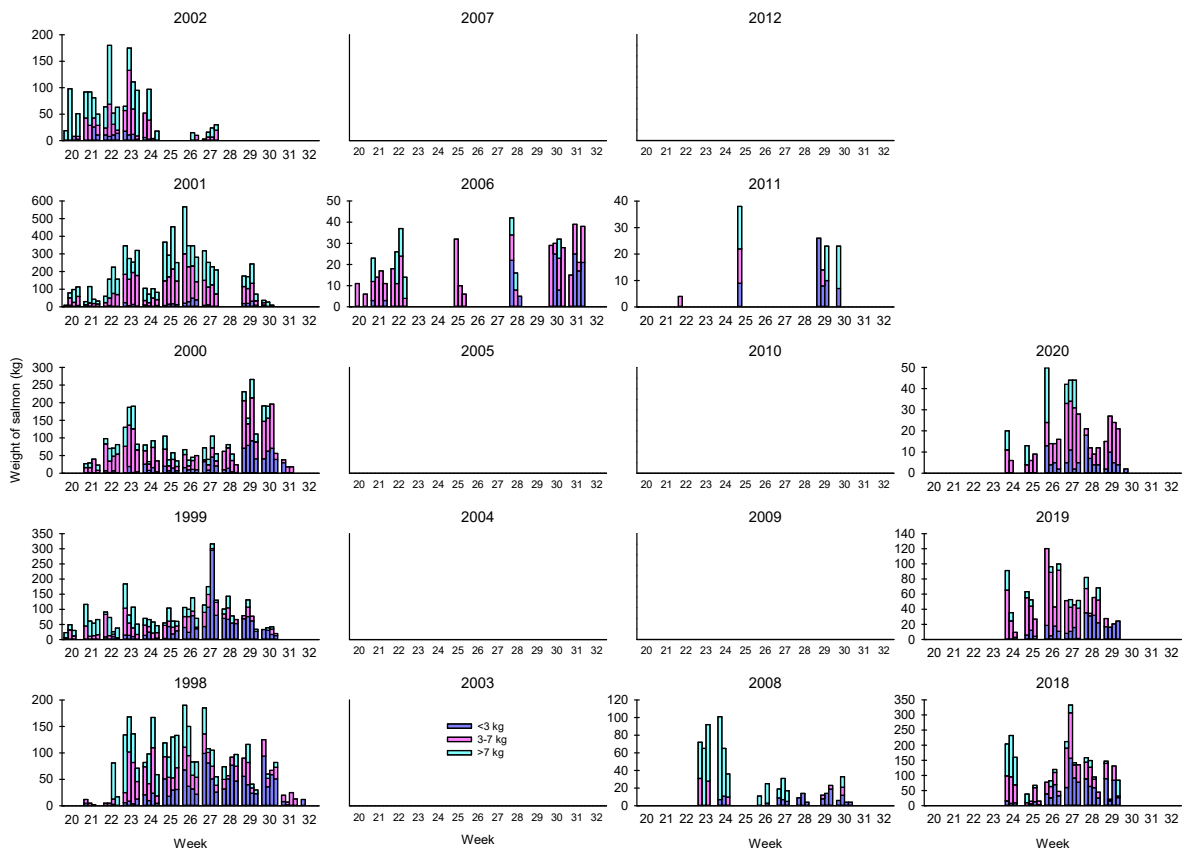


Figure 19. Daily salmon catches (weights of fish in three size groups) in bag net fishery in Tanafjord -Kongsfjord, Berlevåg municipality. Source; SSB (Norway).

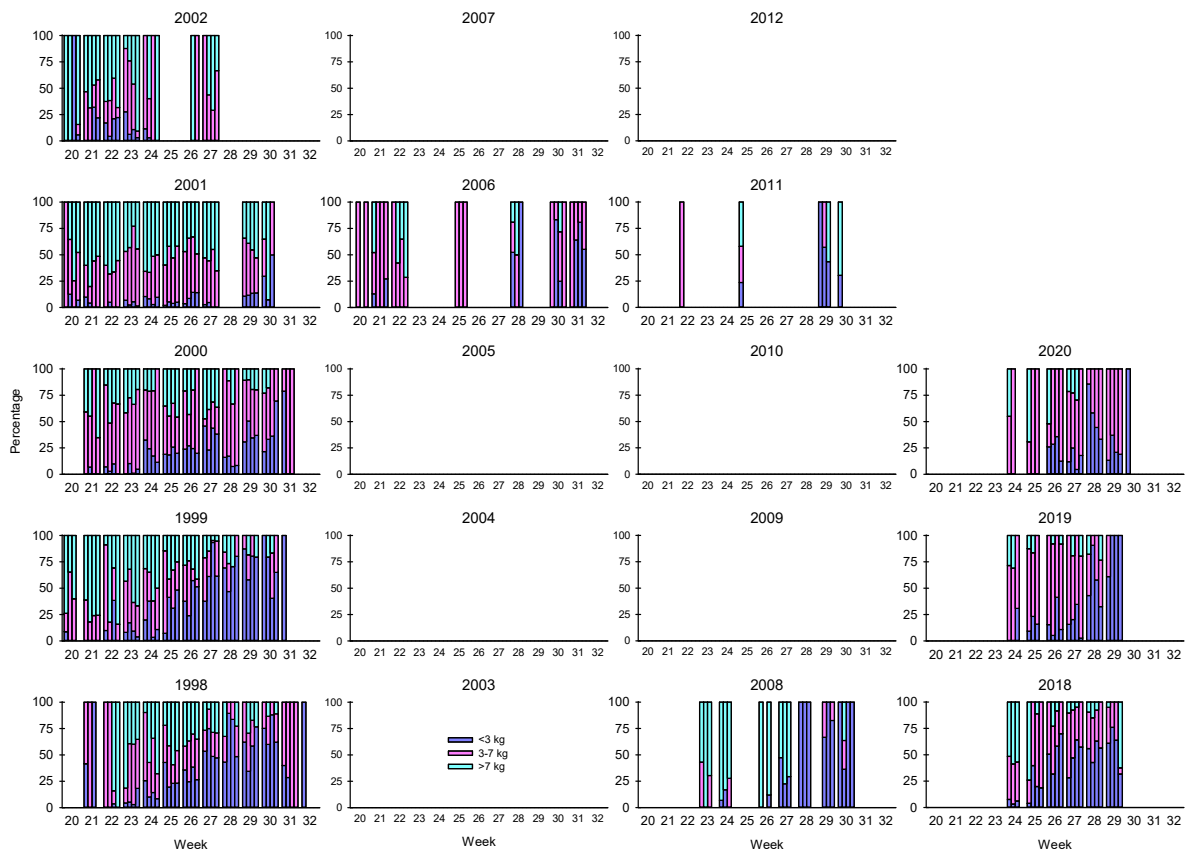


Figure 20. Daily salmon catches (from the weights of fish in three size groups) in bag net fishery in Tanafjord - Kongsfjord, Berlevåg municipality. Source; SSB (Norway).

## 6. Daily salmon catches in bend net fishery in Tanafjord-Kongsfjord, Berlevåg municipality

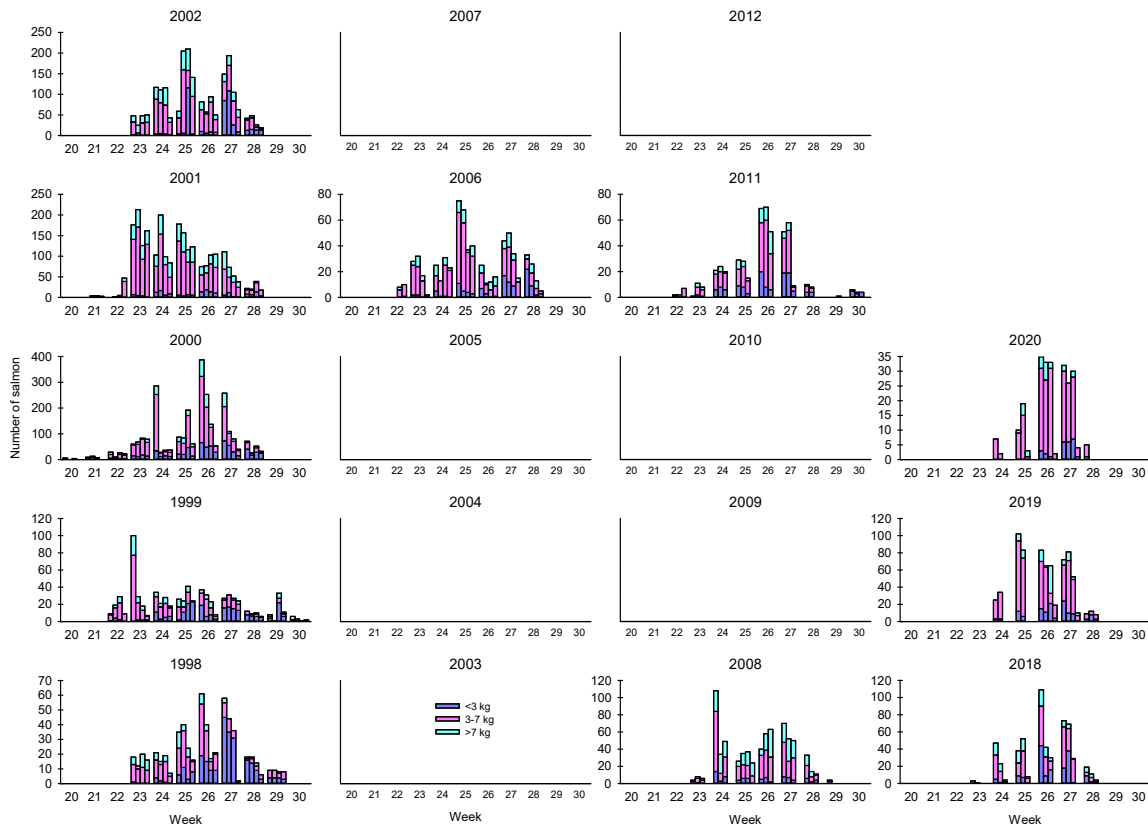


Figure 21. Daily salmon catches (numbers of fish in three size groups) in bend net fishery in Tanafjord -Kongsfjord, Berlevåg municipality. Source; SSB (Norway).

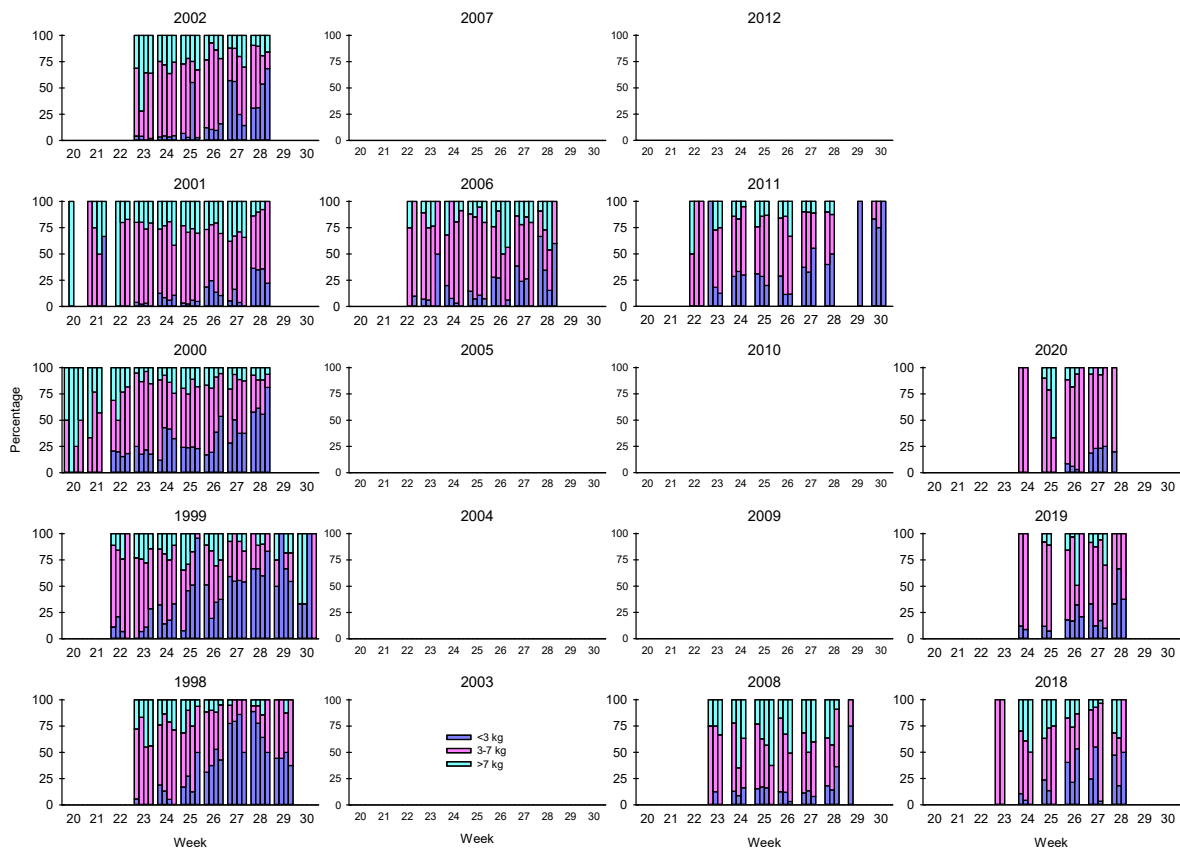


Figure 22. Daily salmon catches (from the numbers of fish in three size groups) in bend net fishery in Tanafjord-Kongsfjord, Berlevåg municipality. Source; SSB (Norway).

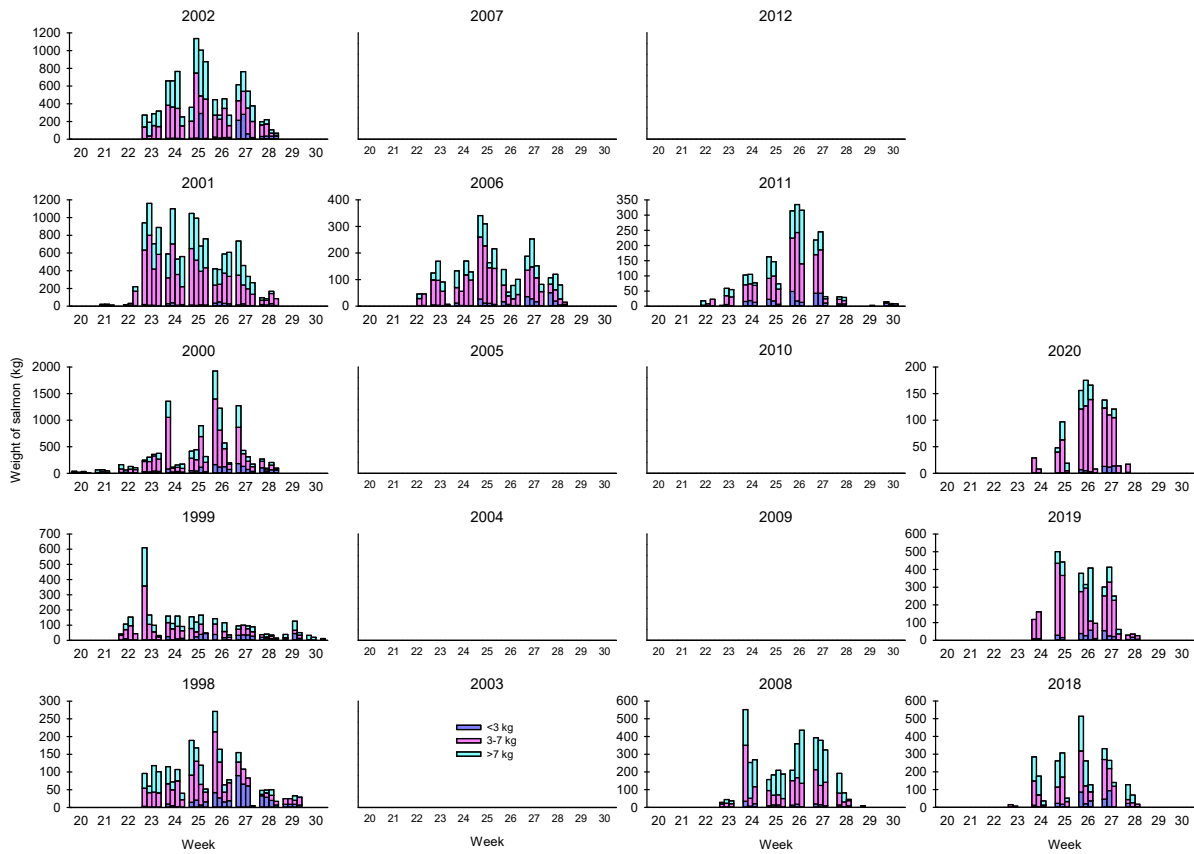


Figure 23. Daily salmon catches (weights of fish in three size groups) in bend net fishery in Tanafjord -Kongsfjord, Berlevåg municipality. Source; SSB (Norway).

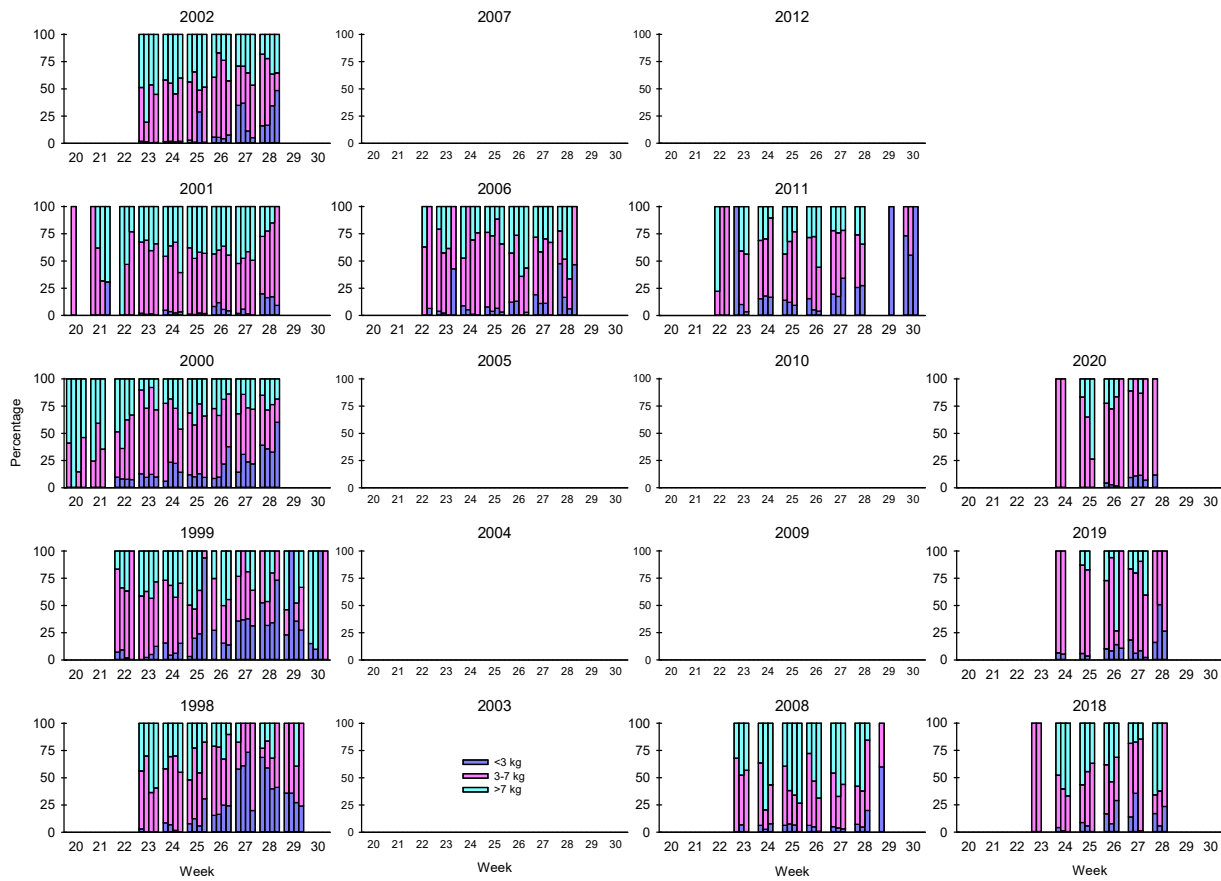


Figure 24. Daily salmon catches (from the weights of fish in three size groups) in bend net fishery in Tanafjord - Kongsfjord, Berlevåg municipality. Source; SSB (Norway).

## 7. Cumulative catches in bag net fisheries from the numbers of salmon caught in Tanafjord (Tana, Gamvik, and Berlevåg municipalities) and Kongsfjord (Berlevåg municipality)

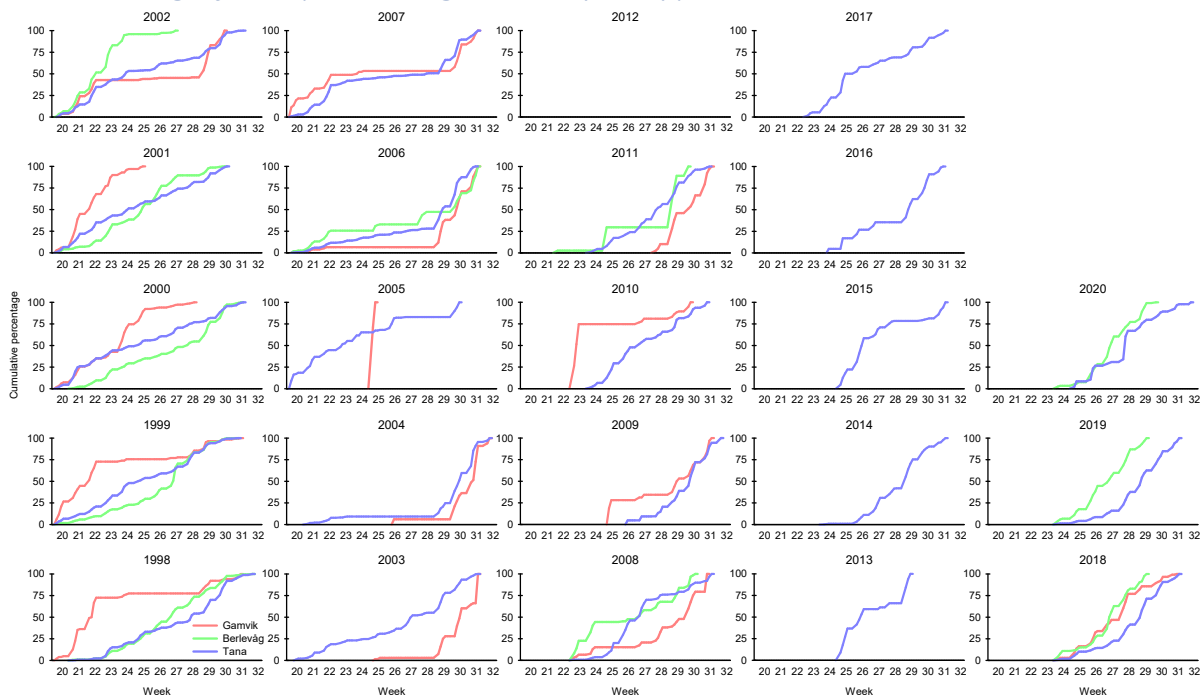


Figure 25. Cumulative salmon catches in bag net fishery from the numbers of salmon (all size groups included) in Tanafjord (Tana, Gamvik, and Berlevåg municipalities) and Kongsfjord (Berlevåg municipality). Source; SSB (Norway).

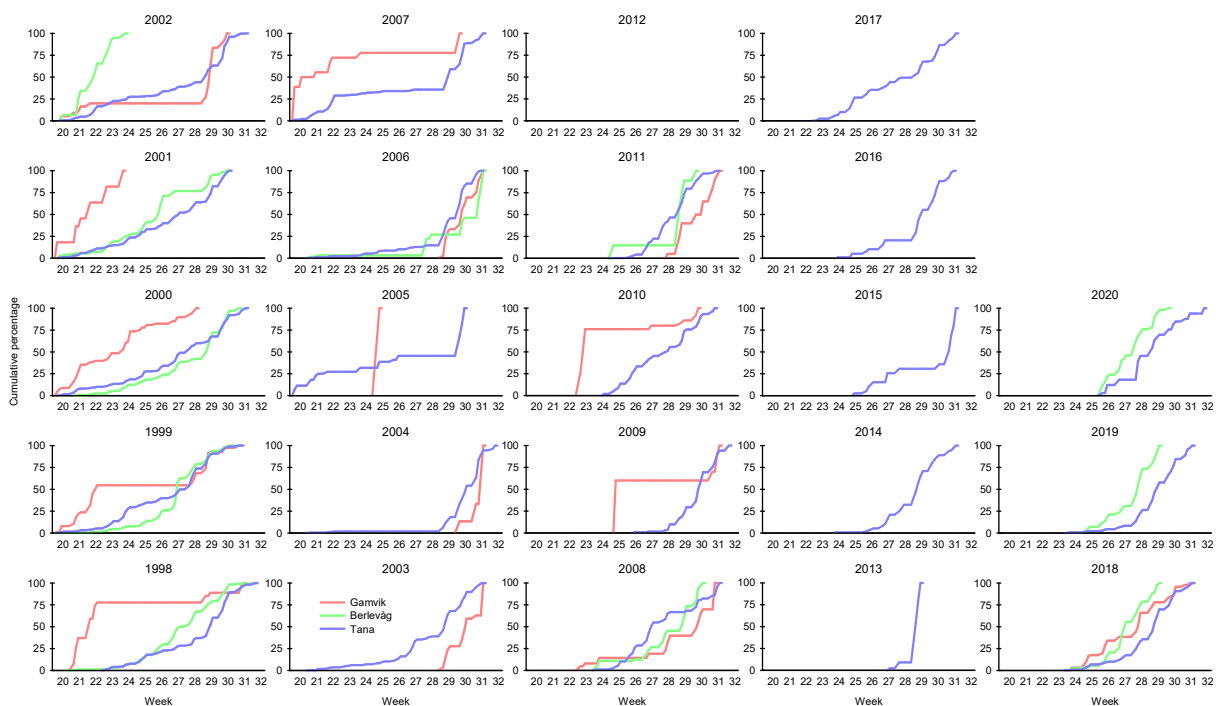


Figure 26. Cumulative salmon catches in bag net fishery from the numbers of salmon below 3 kilos in Tanafjord (Tana, Gamvik, and Berlevåg municipalities) and Kongsfjord (Berlevåg municipality). Source; SSB (Norway).



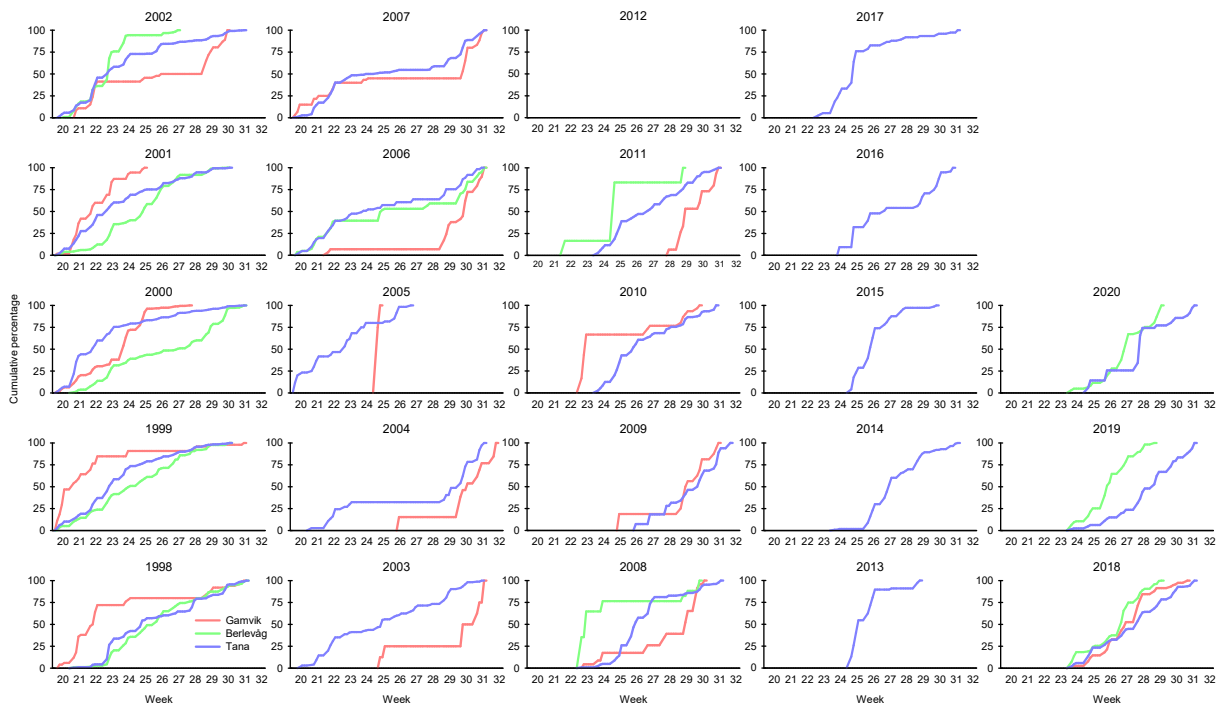


Figure 27. Cumulative salmon catches in bag net fishery from the numbers of salmon between 3-7 kilos in Tanafjord (Tana, Gamvik, and Berlevåg municipalities) and Kongsfjord (Berlevåg municipality). Source; SSB (Norway).

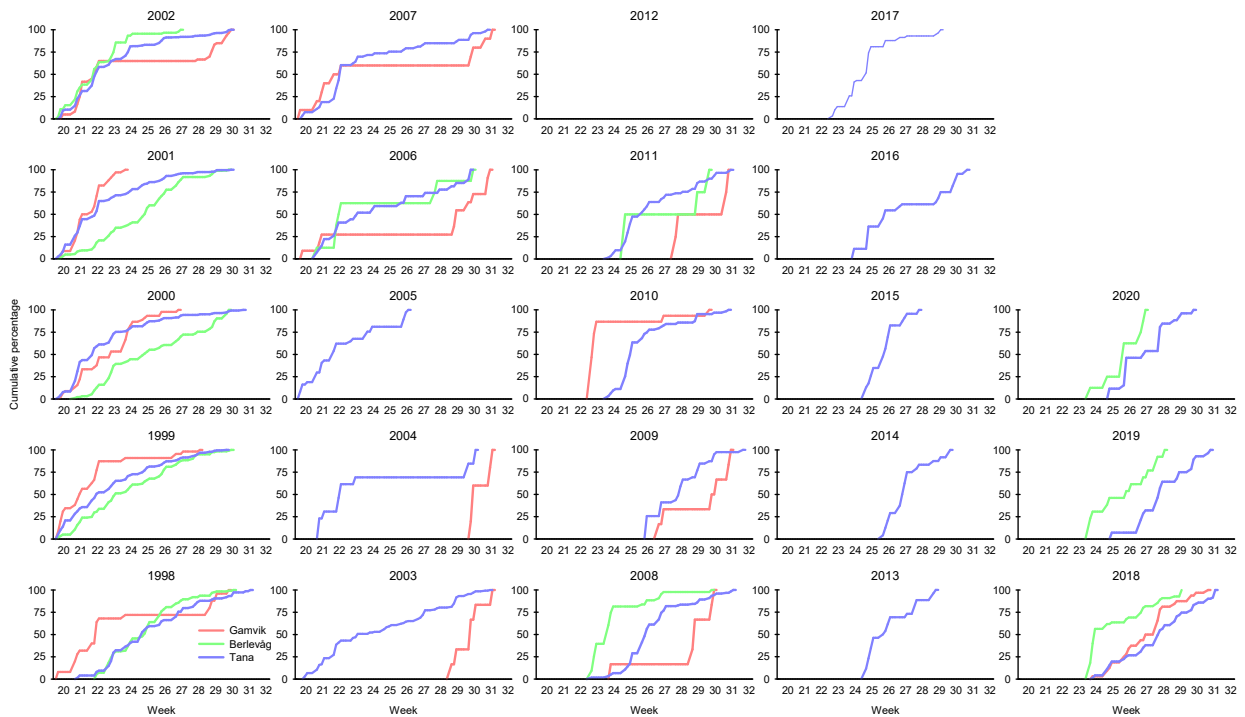


Figure 28. Cumulative salmon catches in bag net fishery from the numbers of salmon above 7 kilos in Tanafjord (Tana, Gamvik, and Berlevåg municipalities) and Kongsfjord (Berlevåg municipality). Source; SSB (Norway).

## 8. Cumulative catches in bend net fisheries from the numbers of salmon caught in Tanafjord (Tana, Gamvik, and Berlevåg municipalities) and Kongsfjord (Berlevåg municipality)

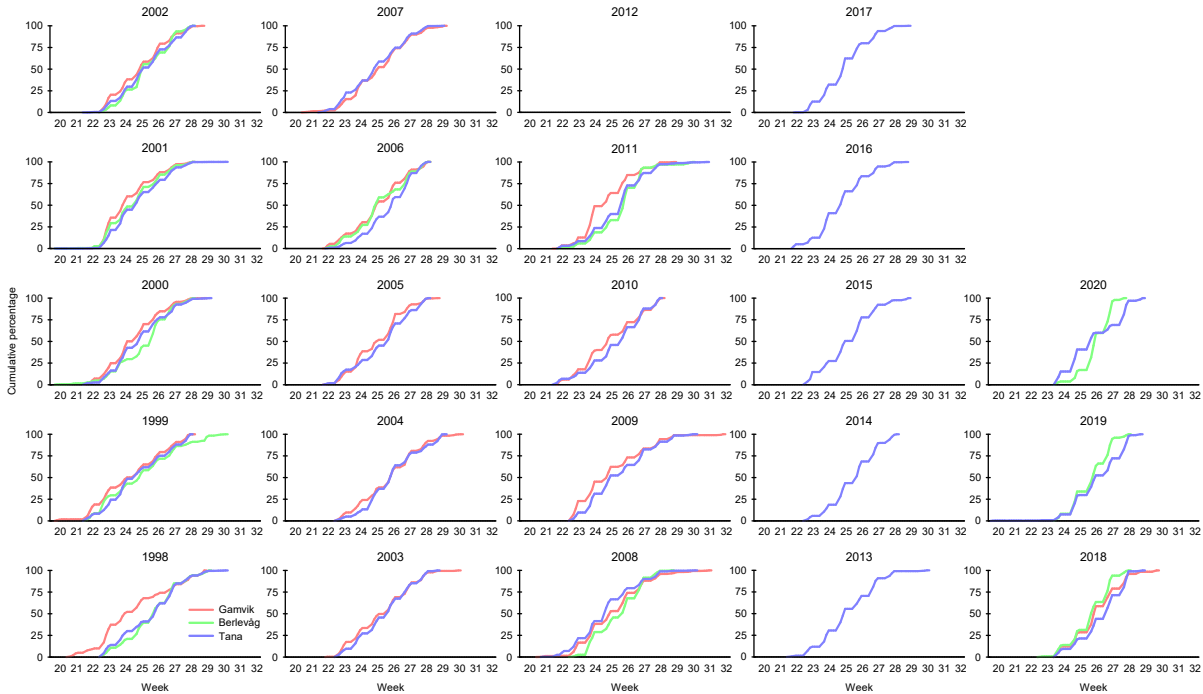


Figure 29. Cumulative salmon catches in bend net fishery from the numbers of salmon (all size groups included) in Tanafjord (Tana, Gamvik, and Berlevåg municipalities) and Kongsfjord (Berlevåg municipality). Source; SSB (Norway).

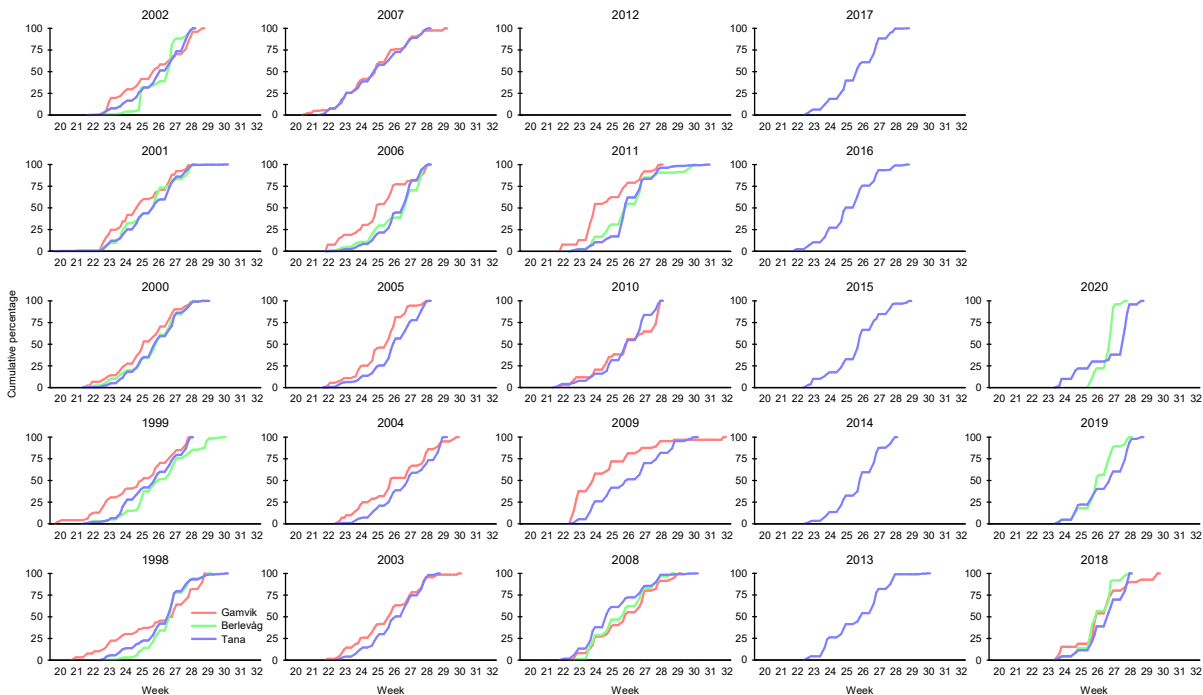


Figure 30. Cumulative salmon catches in bend net fishery from the numbers of salmon below 3 kilos in Tanafjord (Tana, Gamvik, and Berlevåg municipalities) and Kongsfjord (Berlevåg municipality). Source; SSB (Norway).

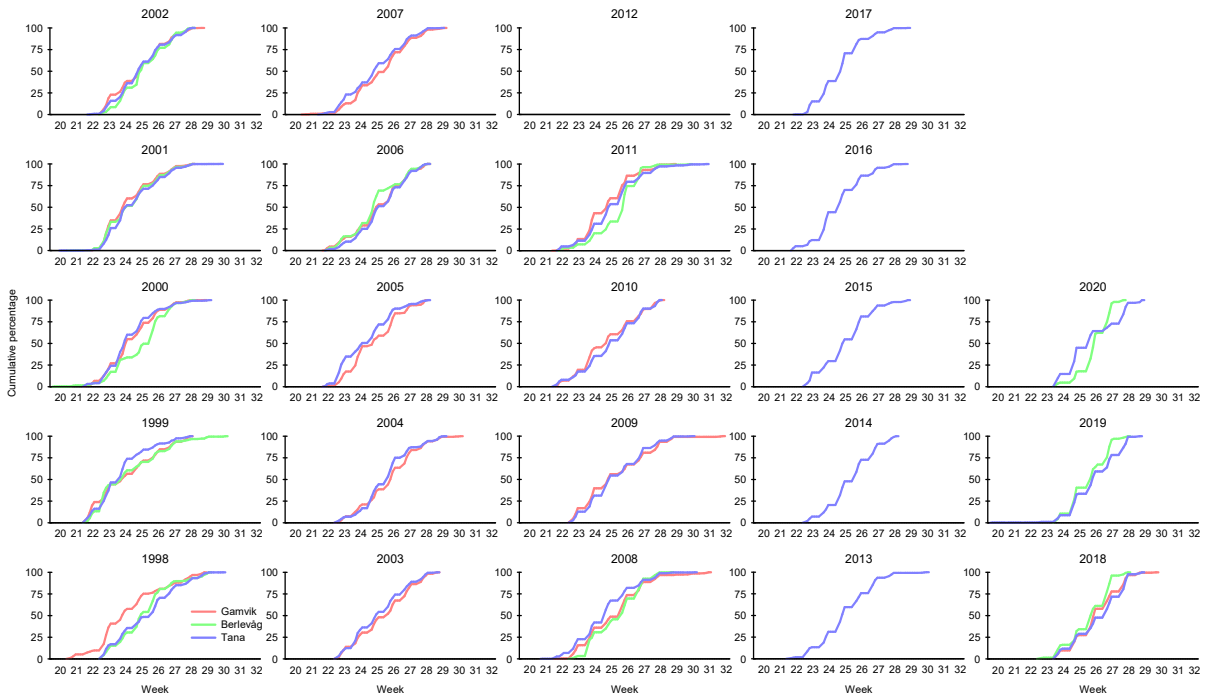


Figure 31. Cumulative salmon catches in bend net fishery from the numbers of salmon between 3-7 kilos in Tanafjord (Tana, Gamvik, and Berlevåg municipalities) and Kongsfjord (Berlevåg municipality). Source; SSB (Norway).

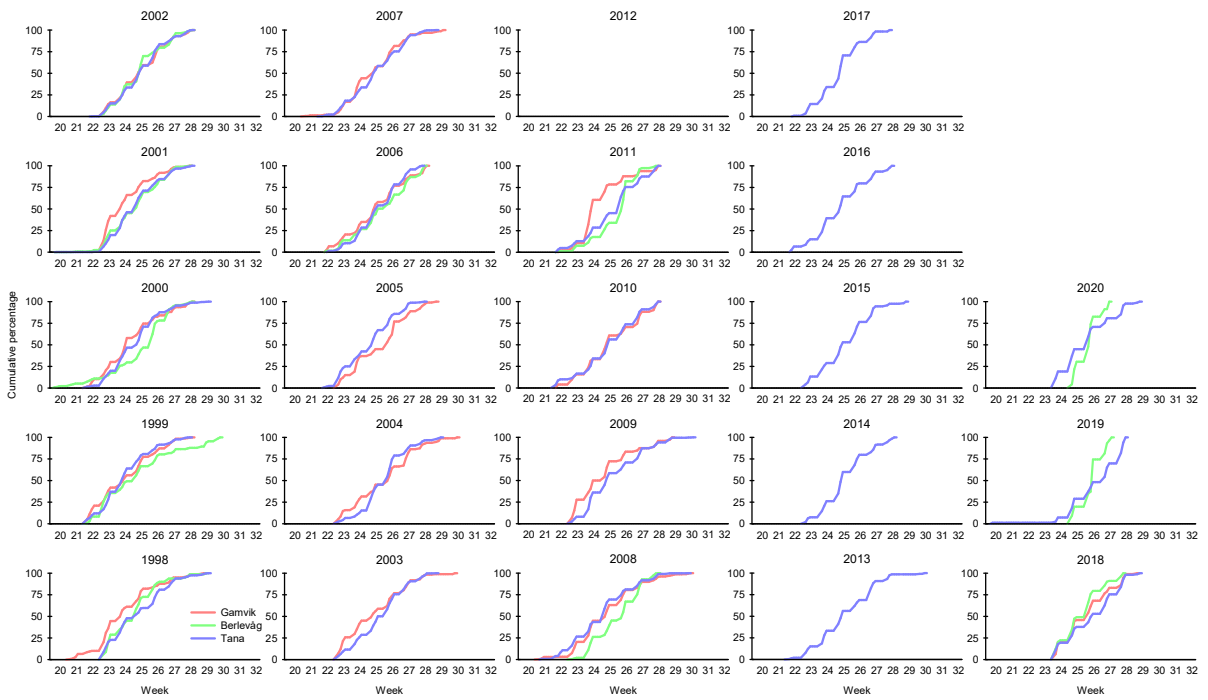


Figure 32. Cumulative salmon catches in bend net fishery from the numbers of salmon above 7 kilos in Tanafjord (Tana, Gamvik, and Berlevåg municipalities) and Kongsfjord (Berlevåg municipality). Source; SSB (Norway).